

# interatletika™

PRODUCTION AND SALE OF CHILDREN'S AND OUTDOOR  
EQUIPMENT

Customer support:

☎ +38 095 273 81 53

play.interatletika.com

✉ export.team@interatletika.com

LK320 - Slide 1,2 m

LK320-COSMOS - Slide Rocket 1,2 m

LK320-UKRAINE - Slide Mill 1,2 m

LK320-VIKINGS - Slide Kraken 1,2 m

LK321 - Slide 0,7 m

LK321-COSMOS - Slide Rocket 0,7 m

LK321-UKRAINE - Slide Mill 0,7 m

LK321-VIKINGS - Slide Kraken 0,7 m

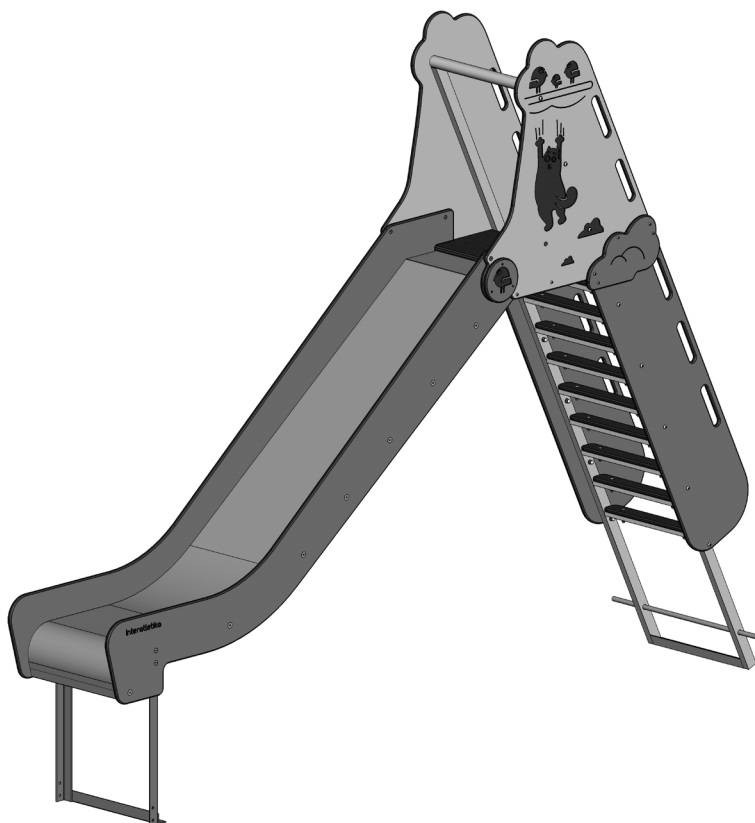
LK322 - Slide 1,5 m

LK322-COSMOS - Slide Rocket 1,5 m

LK322-UKRAINE - Slide Mill 1,5 m

LK322-VIKINGS - Slide Kraken 1,5 m

## DATA SHEET





1.2 Name \_\_\_\_\_.

1.3 Manufacturer LLC«Company Sporttehnika», Ukraine, city of Chernihiv, Ushynsky St., 24.

1.4 4 Serial number and production date: \_\_\_\_\_, «\_\_\_\_\_» \_\_\_\_\_ 20\_\_ year.

1.5 Produced in accordance with regulatory documents: TC AT 28.9-31597759-001:2012.

1.6 The product is designed for children and creates conditions for:

- physical development of the child;

- development of movements coordination, overcoming fear of heights, development of agility and courage, sense of teamwork in team games.

The manufacturer can make changes to the product design to improve its performance, change the design, etc. This document may not contain a description of such changes, but applies to the following modified products.

## 2. TECHNICAL DATA

Product code	Name	Dimensions, mm			Free height of fall, mm	Weight, kg
		Length	Width	Height		
LK320	Slide 1,2 m	3200	554	2067	1227	92
LK320-COSMOS	Slide Rocket 1,2 m	3200	554	2120	1227	94,3
LK320-UKRAINE	Slide Mill 1,2 m	3200	554	2069	1227	92,3
LK320-VIKINGS	Slide Kraken 1,2 m	3200	554	2045	1227	94,6
LK321	Slide 0,7 m	2189	554	1612	772	71,1
LK321-COSMOS	Slide Rocket 0,7 m	2189	554	1665	772	73
LK321-UKRAINE	Slide Mill 0,7 m	2189	554	1614	772	71
LK321-VIKINGS	Slide Kraken 0,7 m	2189	554	1590	772	73
LK322	Slide 1,5 m	3578	554	2305	1468	108
LK322-COSMOS	Slide Rocket 1,5 m	3578	554	2361	1468	110
LK322-UKRAINE	Slide Mill 1,5 m	3578	554	2307	1468	108
LK322-VIKINGS	Slide Kraken 1,5 m	3578	554	2309	1469	73

## 3. COMPLETENESS

Complete set of the product is given in the «Complete set information» and «Complete set of fasteners», supplied with the product.

## 4. CERTIFICATE OF ACCEPTANCE, PACKAGING AND CONSERVATION

Product \_\_\_\_\_, serial number \_\_\_\_\_ complies with regulatory documents TC AT 28.9-31597759-001:2012 and recognised as serviceable.

OTC mark: «\_\_\_\_\_» \_\_\_\_\_ 20\_\_ year.

Date

Full name

P.S.

Packed by LLC «Company Sporttehnika» in accordance with the requirements of regulatory documents.

«\_\_\_\_\_» \_\_\_\_\_ 20\_\_ year.

Date of packing

Packed by \_\_\_\_\_

Full name

Signature

### Information on conservation and deconservation during operation

Conservation date	Conservation method	Conservation period	Deconservation date	Name of the company (organisation)	Position, full name	Signature

## 5. INFORMATION ON STORAGE, TRANSPORTATION AND RECYCLING

The product is transported in the manufacturer's packaging by any means of transport that ensures its safety and protection from external factors (rain, snow, sunlight, water, high humidity, etc.).

### Information about transportation

Date		Brand, state number of the ca/trailer	Position, full name	Signature
Departure	Arrival			

Before installation, store the product in the original packaging in dry, closed rooms with natural air ventilation.

If it is necessary to transport the product to another location after use, it is recommended to use the manufacturer's packaging.

If long-term storage of the product is required, the following storage rules must be observed (the list of conditions is not complete):

- place the product in a closed dry room with natural ventilation;

- protect the product from external factors (dust, water drops, etc.) with a large plastic bag, leaving space for free air circulation;
  - take other measures to preserve the appearance and characteristics of the product during storage.
- When removing the product from storage and preparing for installation, follow the next recommendations:
- remove the product from the packaging material (polyethylene, cardboard, other packaging materials);
  - remove dust and other contaminants from the surface of the product;
  - check completeness and absence of parts damage.

#### Storage information

Date		Product storage conditions	Full name	Signature
Putting into storage	Removal from storage			

After the end of the equipment's service life, the buyer independently determines the procedure for its use. If you decide to recycle, contact the seller or specialized organizations.

The equipment does not contain harmful impurities and materials that can harm your health and is not subject to special recycling.

### 6. INSPECTION AND CHECKING

Before starting the operation of the product, it is visually inspected, checked: the integrity of paint coating, fasteners and structural strength.

If there are concrete support parts of the product, make sure that they are securely fixed and do not move.

Check that the equipment and site are free from packaging materials, construction debris and other foreign objects.

Check the proper condition of the shock-absorbing surfaces on the playground.

### 7. PRODUCT MAINTENANCE

Timely maintenance of the product is the responsibility of the buyer (or a responsible person) and includes:

1. Daily inspection - before using the product, check its performance, visual inspection for the absence of breakdowns, damage, sharp edges on components and parts, structural integrity, strength of wooden structures and element connection points, absence of unnecessary objects on the platforms. If the product is damaged, fully or partially inoperable, or otherwise defective, it is prohibited to use the product.

2. Scheduled inspection is carried out every three months.

It involves a detailed visual and operational inspection of the operation and stability of the equipment, especially with regard to any wear.

In the process of inspection, they determine:

- cleanliness and appearance of the surface of the playground and equipment;
- maintaining distances from parts of the equipment to the surface of the playground;
- absence of protruding parts of the foundations;
- absence of defects/malfunctions of equipment elements;
- wear of moving parts;
- structural integrity of equipment.

Special attention should be paid to hidden and inaccessible parts of the equipment.

3. Annual inspection is held every 12 months to establish the overall safety level of the equipment.

In the process of visual and functional inspection it is determined:

- structural stability;
- integrity of the foundation;
- strength of units of item elements connection;
- wear of sliding surfaces and grips.

Special attention should be given to:

- assessing the impact of weather events;
- the presence of rot or corrosion;
- parts that are closed to access during the entire period of operation.

The results of the inspection, repair or replacement of equipment components must be recorded in the maintenance record sheet.

#### Maintenance recording

Date and type of inspection	Name of the work done	Remarks on the technical condition	Position, full name, signature of the responsible person

## 8 REPAIR AND RECORDING OF MALFUNCTIONS

Replace all defective components with parts from the manufacturer.

It is forbidden to manufacture and replace components and parts of the equipment independently.

### Recording malfunctions during operation

Date of failure of the product, its component part or structural element	Nature (external manifestation) of the malfunction	Corrective actions taken	Position, full name, signature of the responsible person

### Information about the repair

Name of a component or structural element	The reason for the repair	Date		Name of the organisation, position, full name, signature of the person who performed the repair
		Put for repair	Out of repair	

## 9. INSTRUCTIONS FOR SAFE USE

**WARNING. Children are allowed on the equipment only under adult control.**

Before operating the product, conduct a visual inspection, check the fasteners and structural strength.

The equipment is used on the playgrounds without constant supervision by operating personnel. In order to ensure the safe operation of the product, the owner must conduct a daily visual inspection. If malfunctions are detected during the inspection, they must be immediately eliminated, and if this is not possible, the equipment must be closed for users.

There should not be any foreign objects, sharp elements, protrusions on the surface of the playground.

Under playground equipment with a free height of fall of more than 600 mm, an impact-absorbing coating must be provided over the entire fall zone. With a free height of fall of less than 1000 mm, a turf shock-absorbing coating is allowed.

### Examples of impact-absorbing coatings

Material <sup>1</sup>	Description	Minimal depth, mm	Free height of fall, mm
Turf			≤1000
Tree bark	grain size 20-80 mm	200	≤2000
		300	≤3000
Sawdust	grain size 5-30 mm	200	≤2000
		300	≤3000
Sand <sup>2</sup>	grain size 0,2-2 mm	200	≤2000
		300	≤3000
Gravel <sup>2</sup>	grain size 2-8 mm	200	≤2000
		300	≤3000
Other materials <sup>3</sup>	Characteristics of the tested material		Critical free height of fall obtained during testing
1. Materials specially prepared for playgrounds. 2. There should not be any clay inclusions. 3. The grain size is obtained by sieving through a sieve as in EN933-1.			

**WARNING. Operating the product without an impact-absorbing coating may result to serious injury during falling down.**

Playground surface materials with low impact-absorbing features should only be used outside the fall zone.

#### Product use:

- it is recommended to show or tell children how to use the equipment;
- during use it is recommended to hold onto handrails, railings, handles;
- it is forbidden to use until the completion of its full and final installation;
- it is forbidden to use by users of a different age and weight category;
- before using clear the surface from foreign objects, sharp elements, protrusions;
- it is forbidden to move the product elements which are not intended for this;
- do not use in difficult weather conditions (ice, snow, rain, hail, strong wind, etc.), in which there is a possibility of injury to the child.

#### The manufacturer is not responsible for the consequences:

- poor quality and improper installation of the product;
- use of low-quality materials and inadequate qualifications of personnel during installation of the product;

- use of the product earlier than the period necessary to fix the product in the soil or other material;
- design changes to the product that caused injury;
- lack of proper adult control;
- violation of age and weight restrictions by users;
- damage to the product due to improper storage, installation or use of the product for purposes other than those intended.

## **10. INSTALLATION INSTRUCTIONS**

Installation of the product can be carried out by the manufacturer, service centre or other legal entities and individuals who have the necessary material and technical base and qualifications.

The product is installed on a prepared flat area, free from debris, trees and other obstacles that interfere with installation (when installed in winter, the area shall be additionally free from snow). The required size of the site is determined by the fall zone of the equipment. When installing in winter on natural ground, it is recommended to choose a site with compacted soil in the area of foundation placement.

The height difference of the prepared site should be:

a) no more than 50 mm for natural substrates, including substrates with subsequent shock-absorbing coating.

b) no more than 10 mm for hard substrates (asphalt, concrete), including substrates with subsequent application of a synthetic protective coating.

Before starting the installation, you must:

- study the documentation supplied with the product;
- check the completeness in accordance with the documents supplied with the product;
- remove the original packaging from the component part;
- comply with safety requirements.

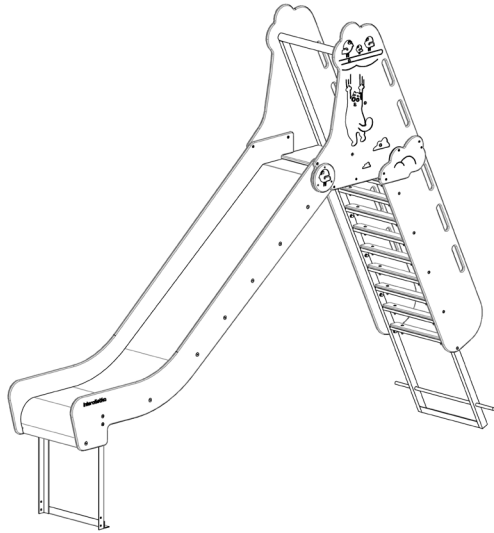
To avoid cracking of the wood, for screws with a diameter of more than 4 mm, drill holes with a diameter of 0.6...0.7 mm to a depth of 0.8 of the screw's length.

**WARNING. The presence and participation of children during the installation of the product is not allowed.**

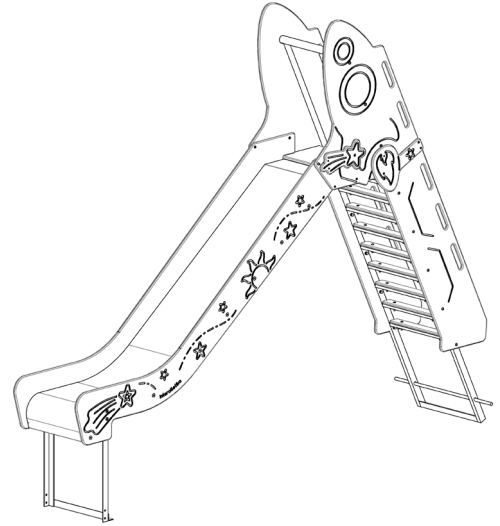
Install the product in stages, following the instructions in the appendix.

**Table №1 – General view:**

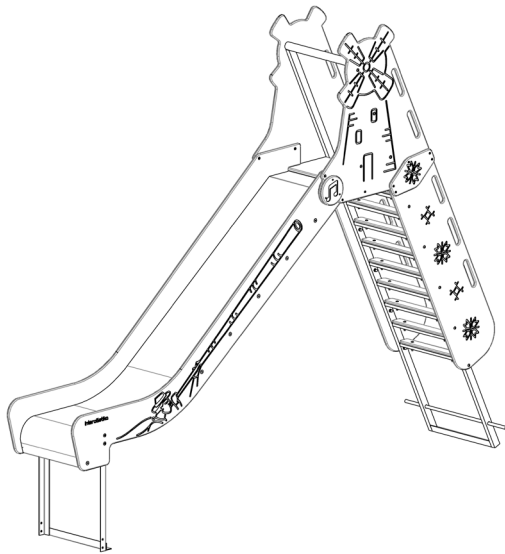
<b>LK320</b>	<b>LK320-COSMOS</b>
--------------	---------------------



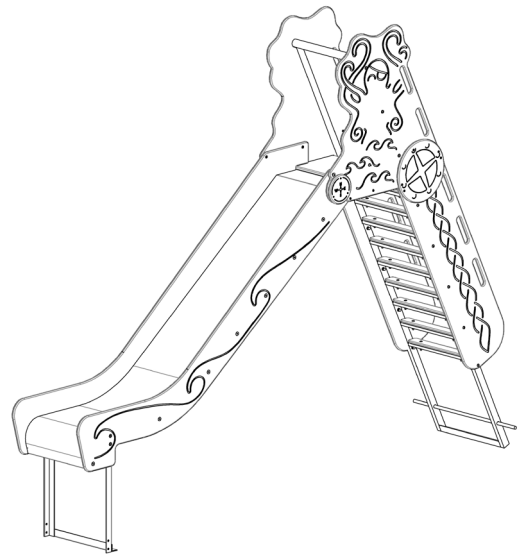
**LK320-UKRAINE**



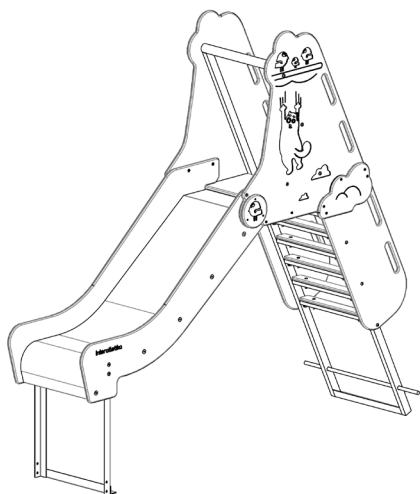
**LK320-VIKINGS**



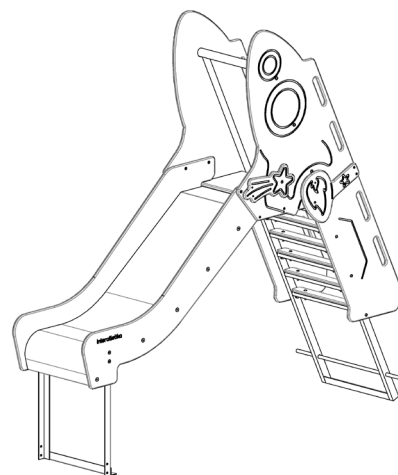
**LK321**



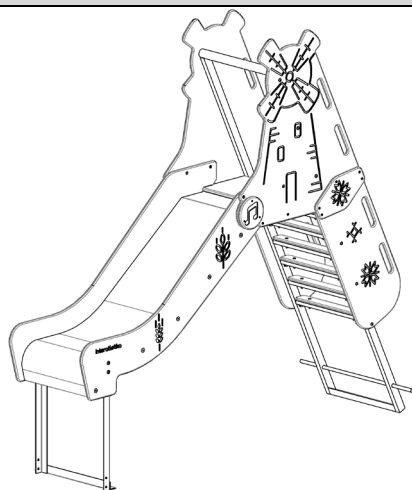
**LK321-COSMOS**



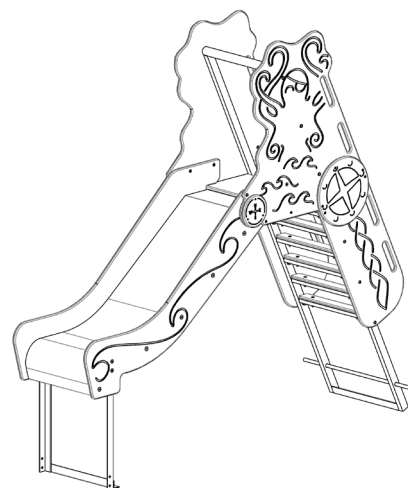
**LK321-UKRAINE**



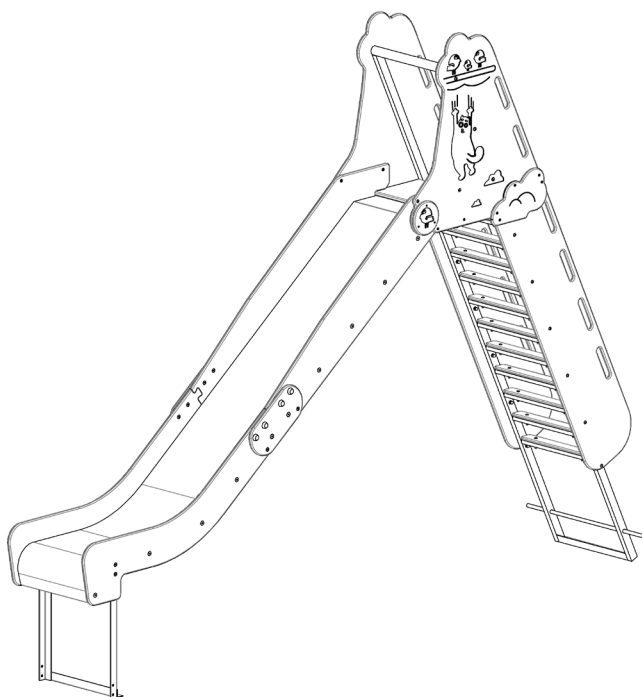
**LK321-VIKINGS**



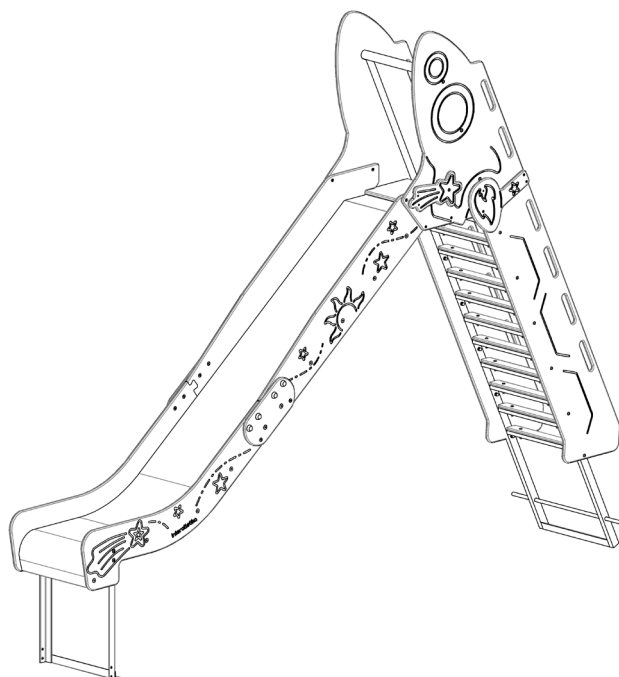
**LK322**



**LK322-COSMOS**

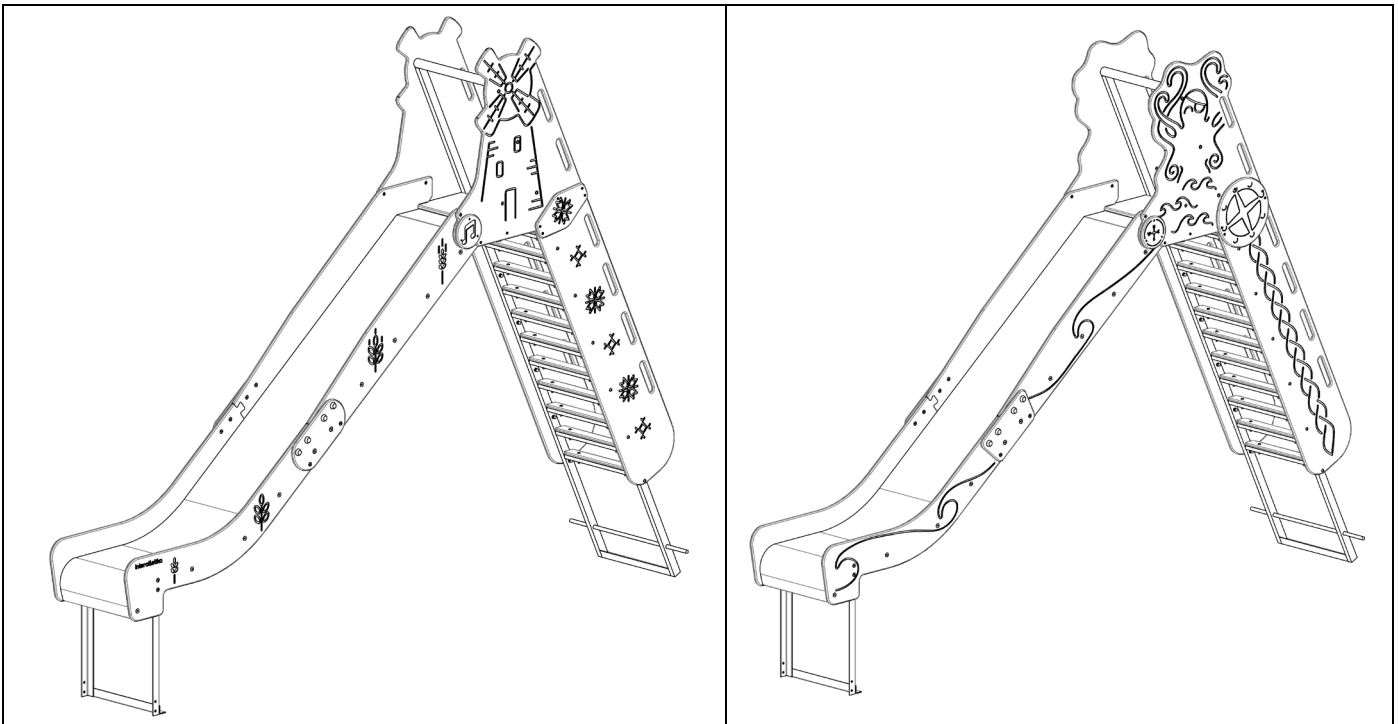


**LK322-UKRAINE**



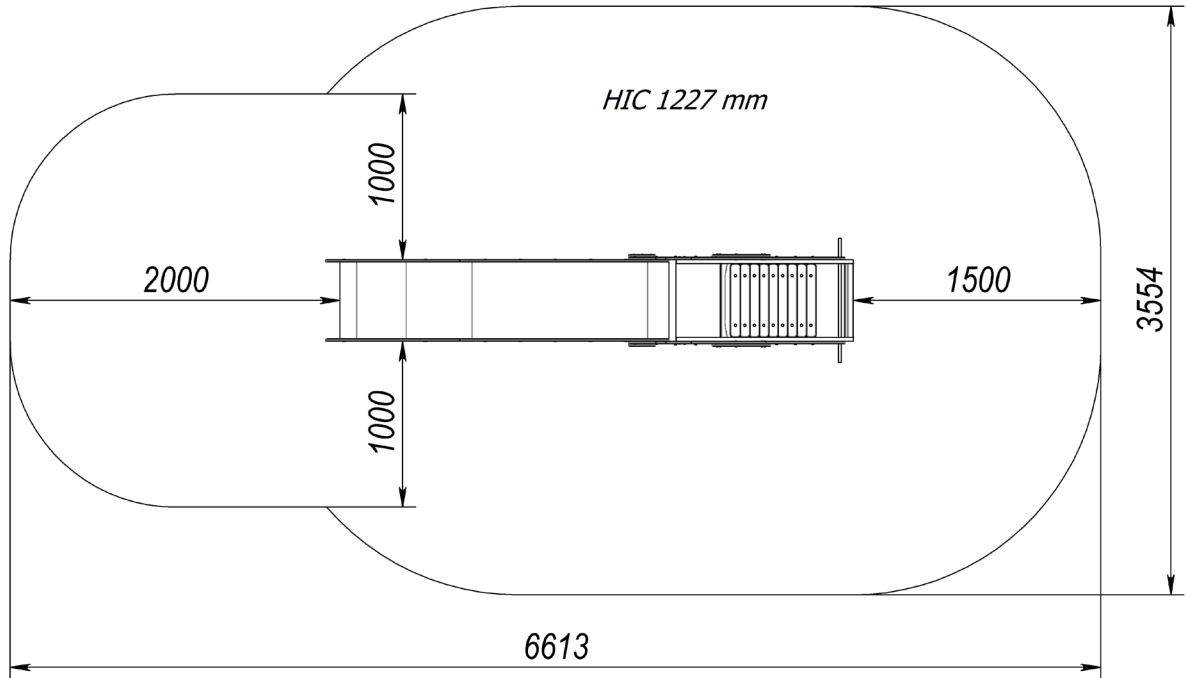
**LK322-VIKINGS**



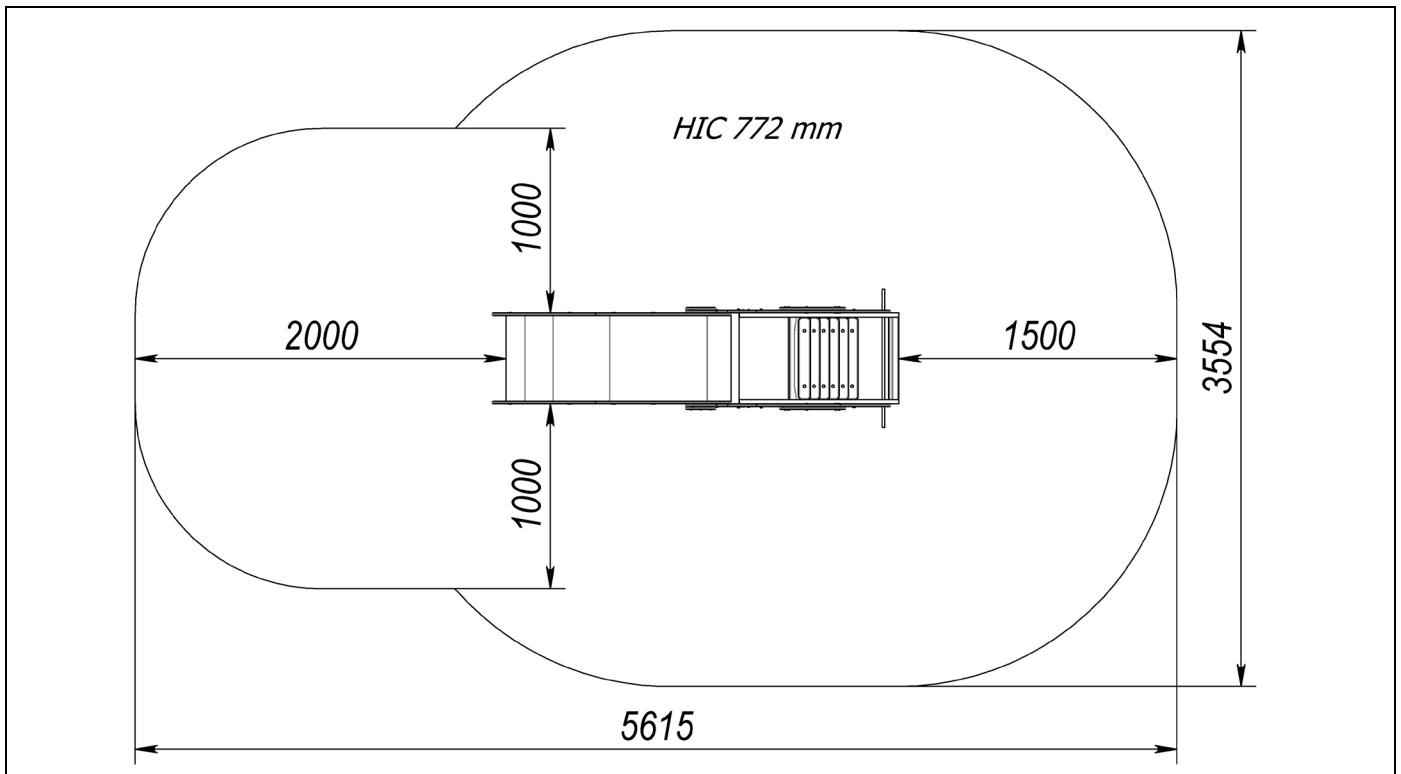


**Table №2 – Landing zone:**

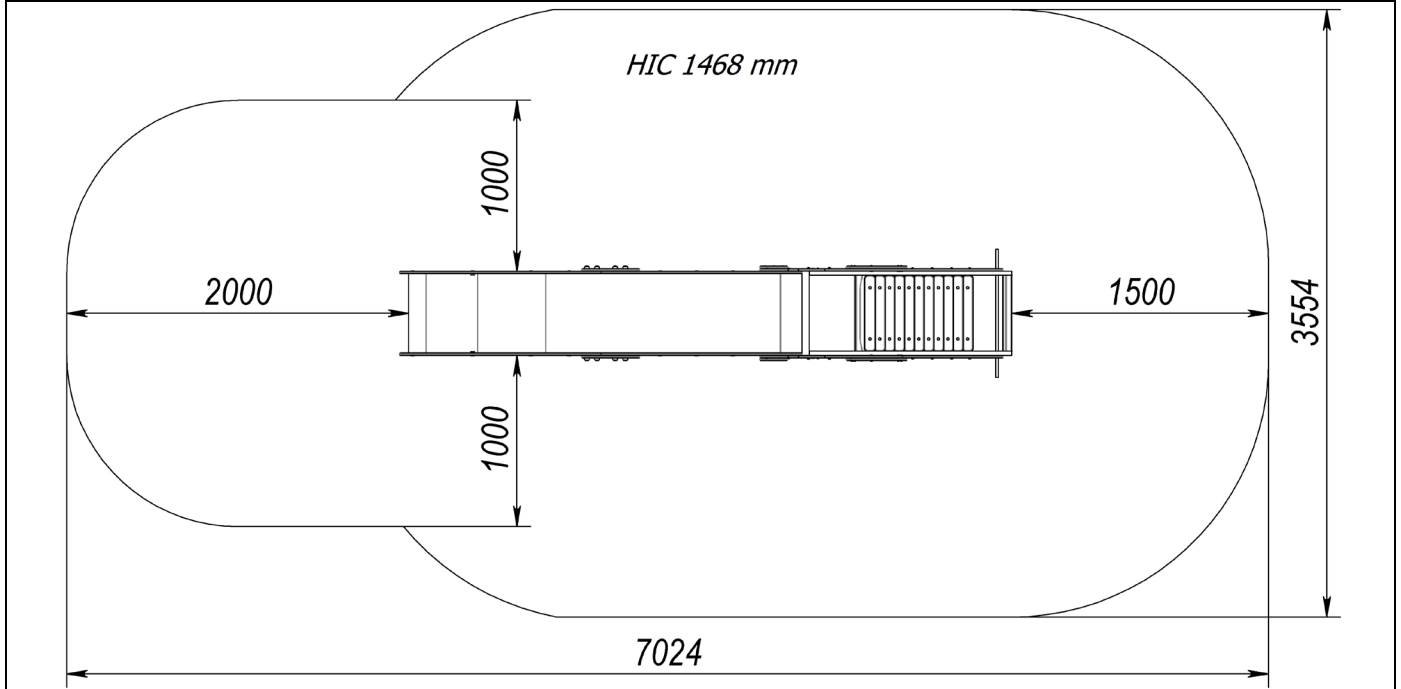
**LK320, LK320-COSMOS, LK320-UKRAINE, LK320-VIKINGS**



**LK321, LK321-COSMOS, LK321-UKRAINE, LK321-VIKINGS**

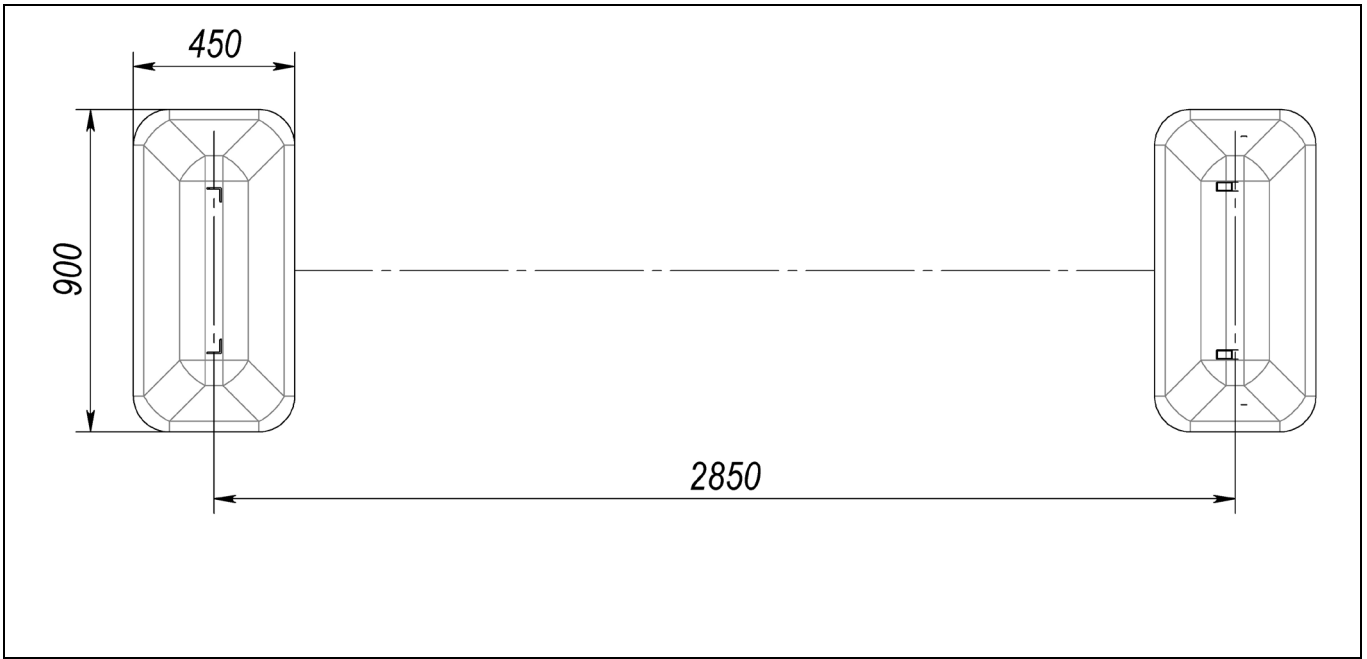


**LK322, LK322-COSMOS, LK322-UKRAINE, LK322-VIKINGS**

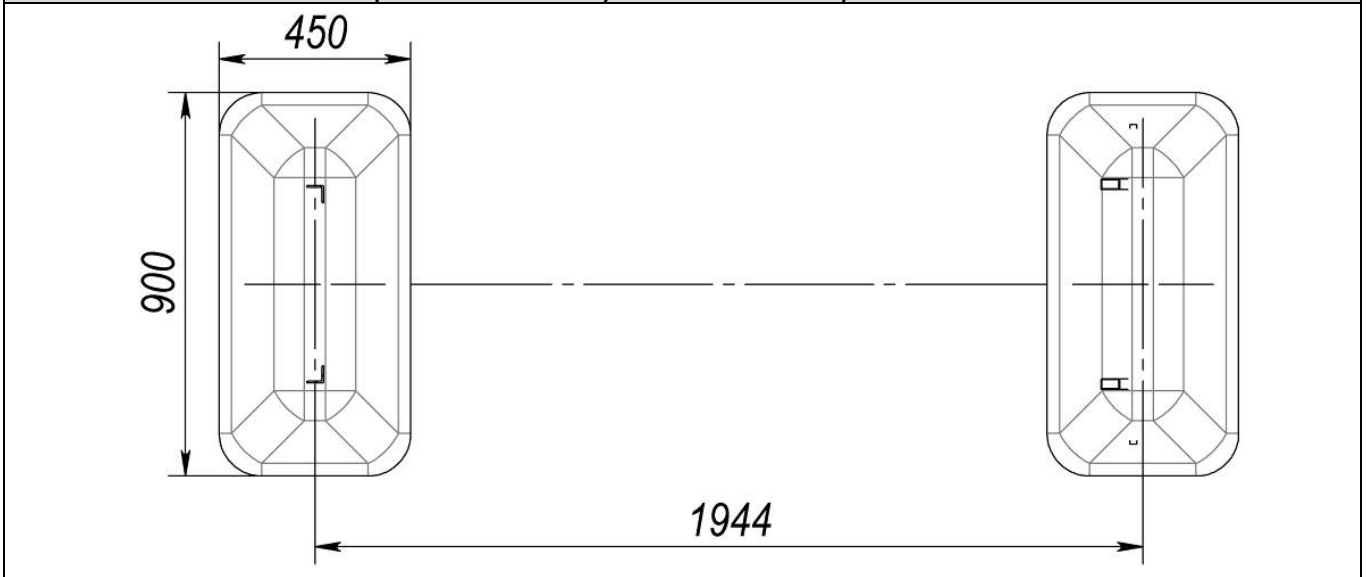


**Table №3 – Concreting zone:**

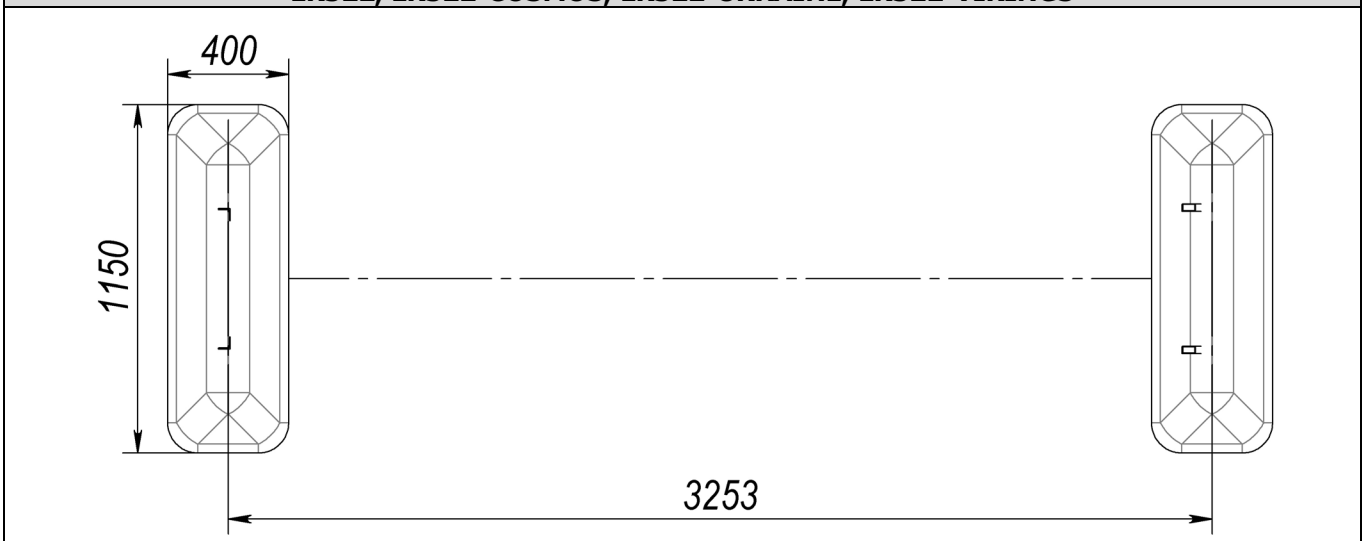
**LK320, LK320-COSMOS, LK320-UKRAINE, LK320-VIKINGS**



**LK321, LK321-COSMOS, LK321-UKRAINE, LK321-VIKINGS**

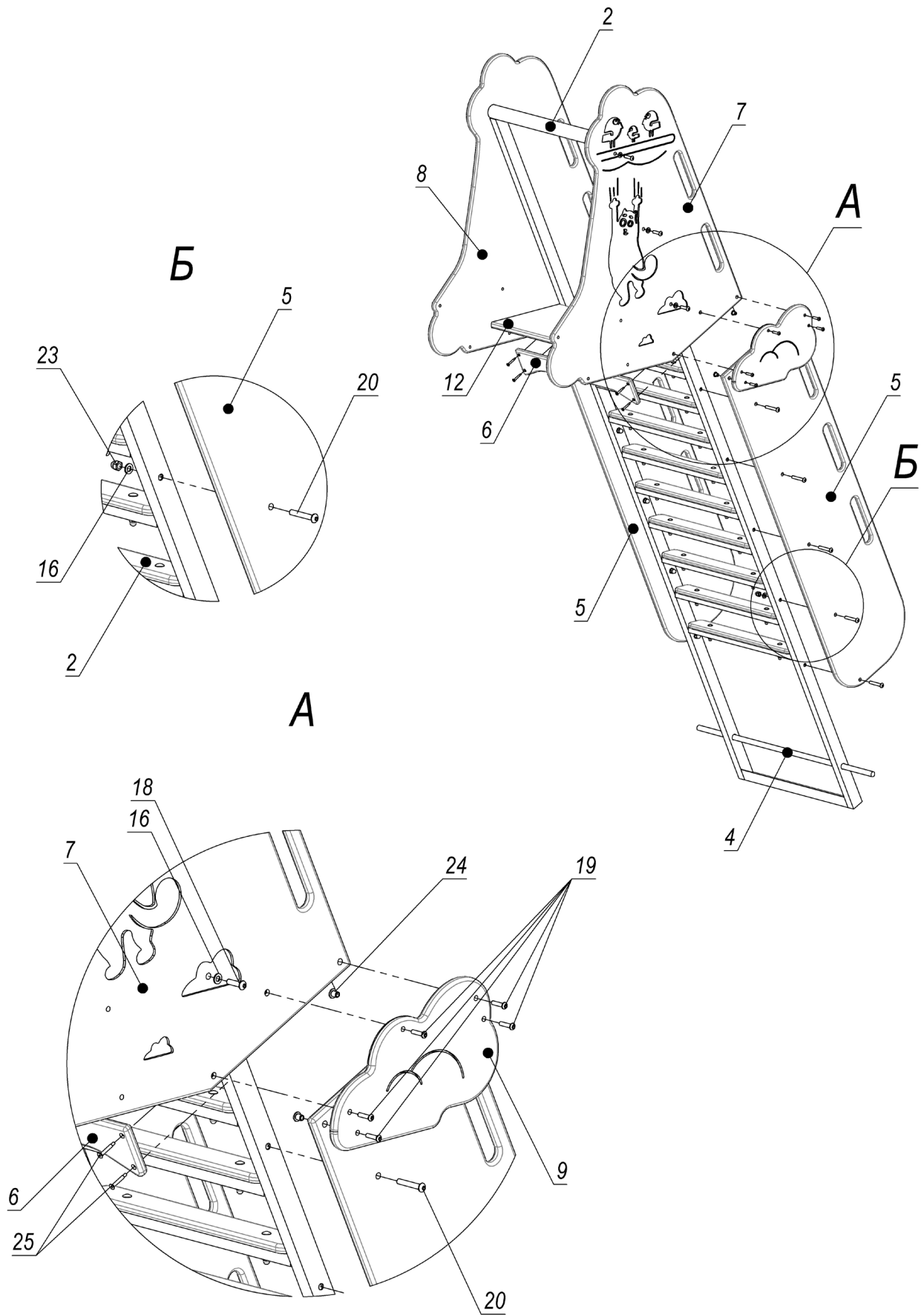


**LK322, LK322-COSMOS, LK322-UKRAINE, LK322-VIKINGS**

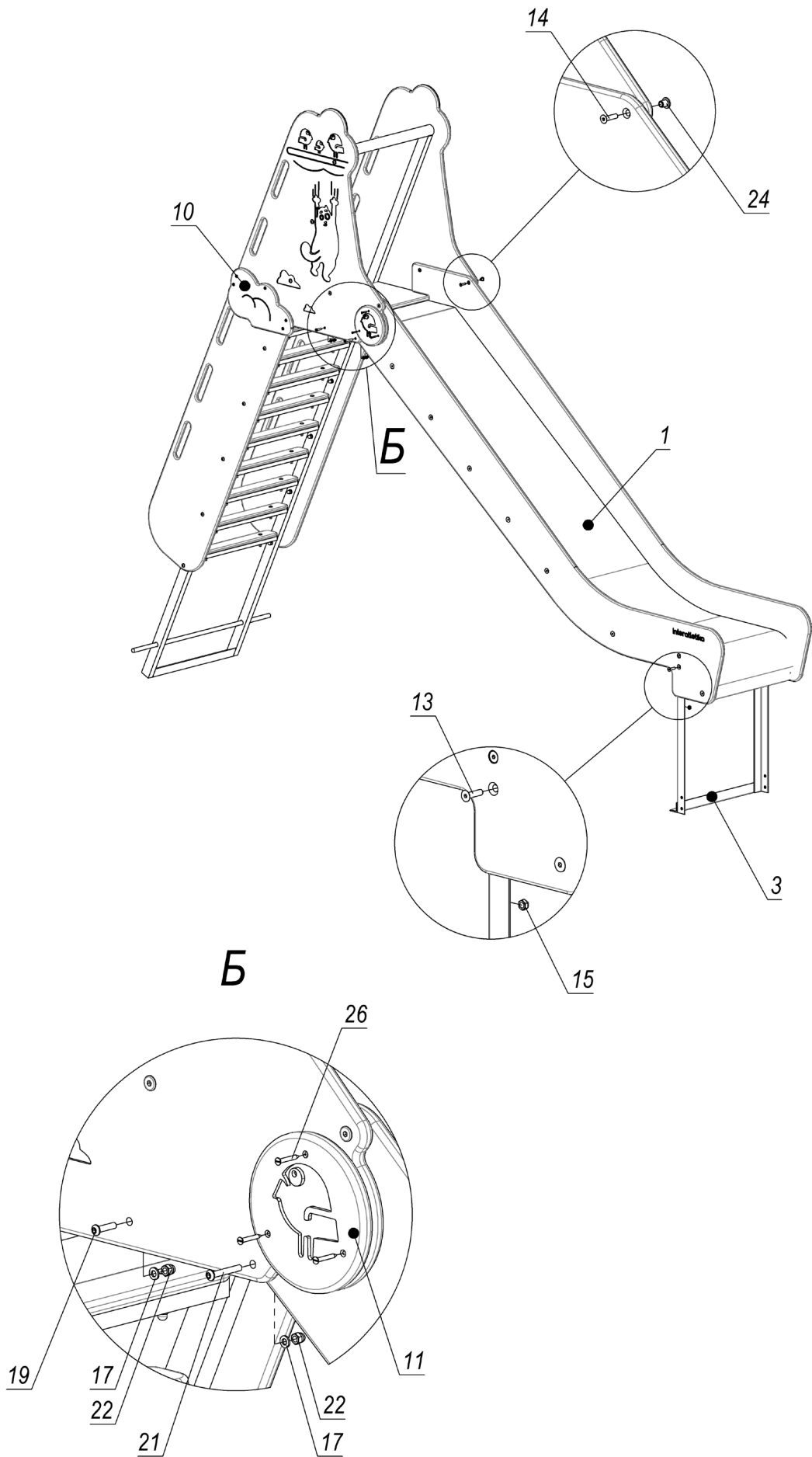


«Assembly schemes»

The assembly of other slides is identical. Additional assembly schemes are in the «Appendix»



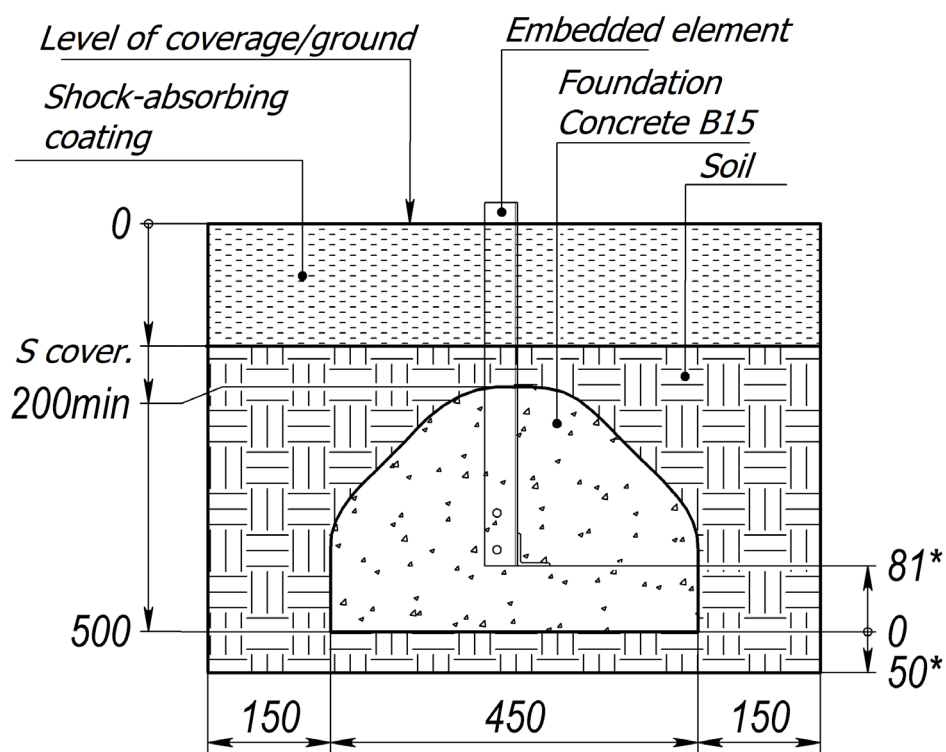
Picture 1 – Assembly scheme 1



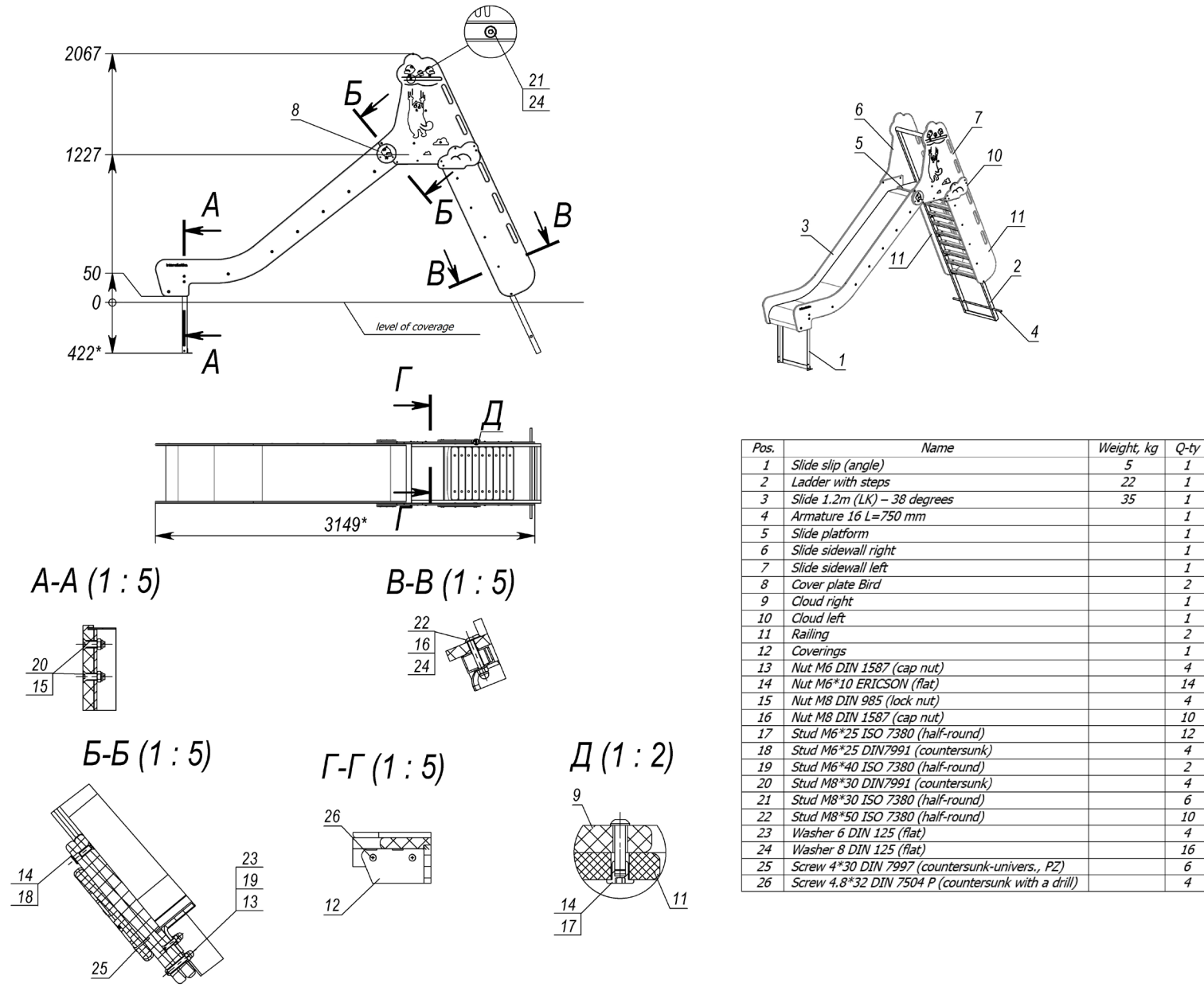
Picture 2 – Assembly scheme 2

Table N°4 – Complete set

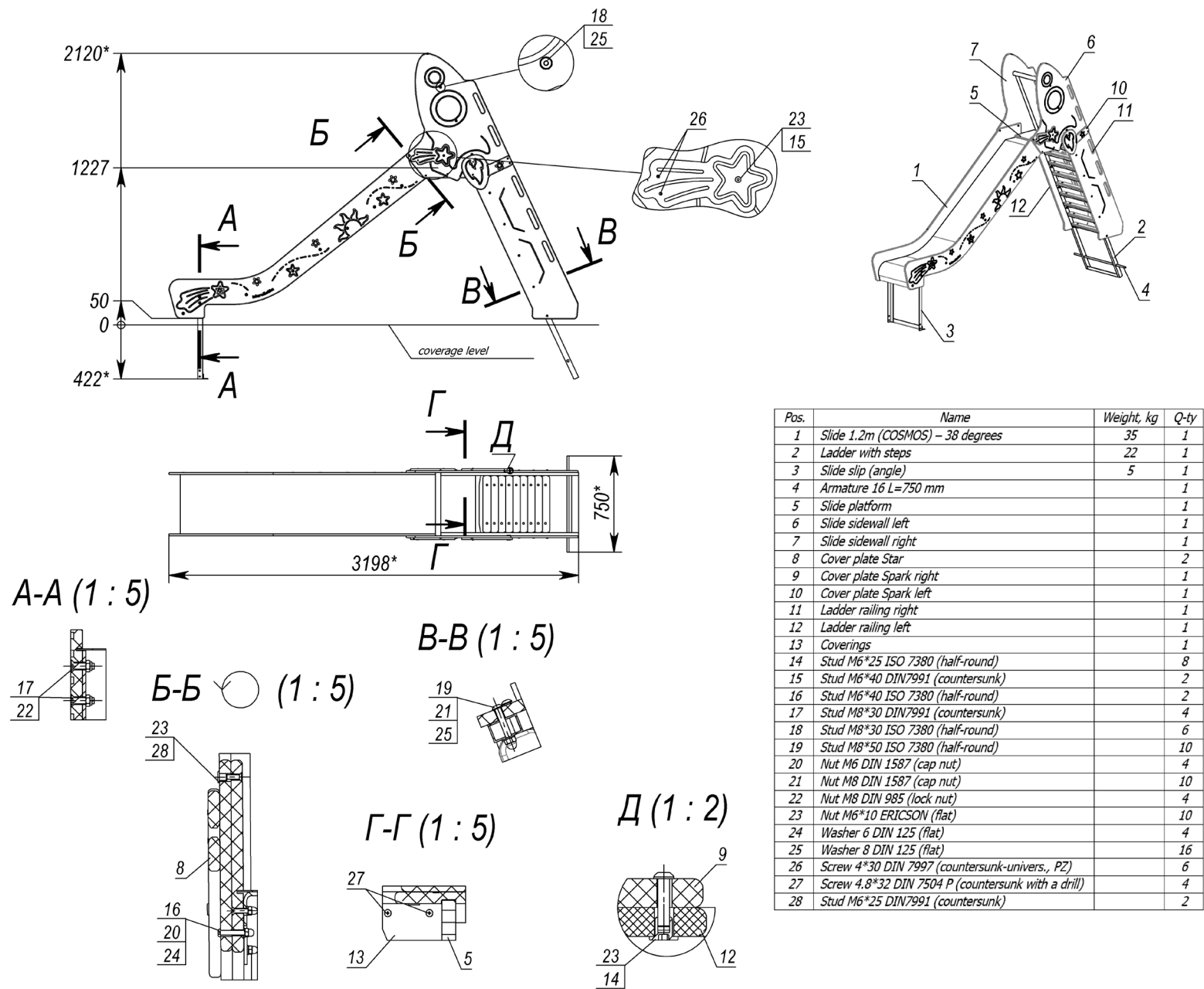
Pos.	Name	Weight, kg	Q-ty
1	Slide 1.2m (LK) – 38 degrees	35	1
2	Ladder with steps	22	1
3	Slide slip (angle)	5	1
4	Armature 16 L=750 mm		1
5	Railing		2
6	Coverings		1
7	Slide sidewall left		1
8	Slide sidewall right		1
9	Cloud left		1
10	Cloud right		1
11	Cover plate Bird		2
12	Slide platform		1
13	Stud M8*30 DIN7991 (countersunk)		4
14	Stud M6*25 DIN7991 (countersunk)		4
15	Nut M8 DIN 985 (lock nut)		4
16	Washer 8 DIN 125 (flat)		16
17	Washer 6 DIN 125 (flat)		4
18	Stud M8*30 ISO 7380 (half-round)		6
19	Stud M6*25 ISO 7380 (half-round)		12
20	Stud M8*50 ISO 7380 (half-round)		10
21	Stud M6*40 ISO 7380 (half-round)		2
22	Nut M6 DIN 1587 (cap nut)		4
23	Nut M8 DIN 1587 (cap nut)		10
24	Nut M6*10 ERICSON (flat)		14
25	Screw 4.8*32 DIN 7504 P (countersunk with a drill)		4
26	Screw 4*30 DIN 7997 (countersunk-univers., PZ)		6



Picture 3 – Concreting scheme

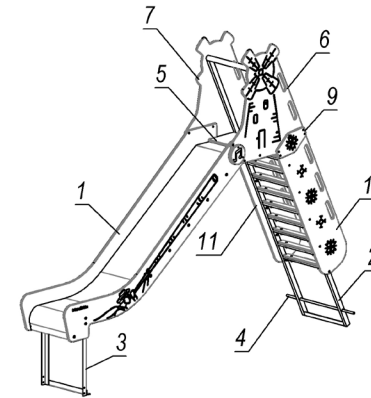
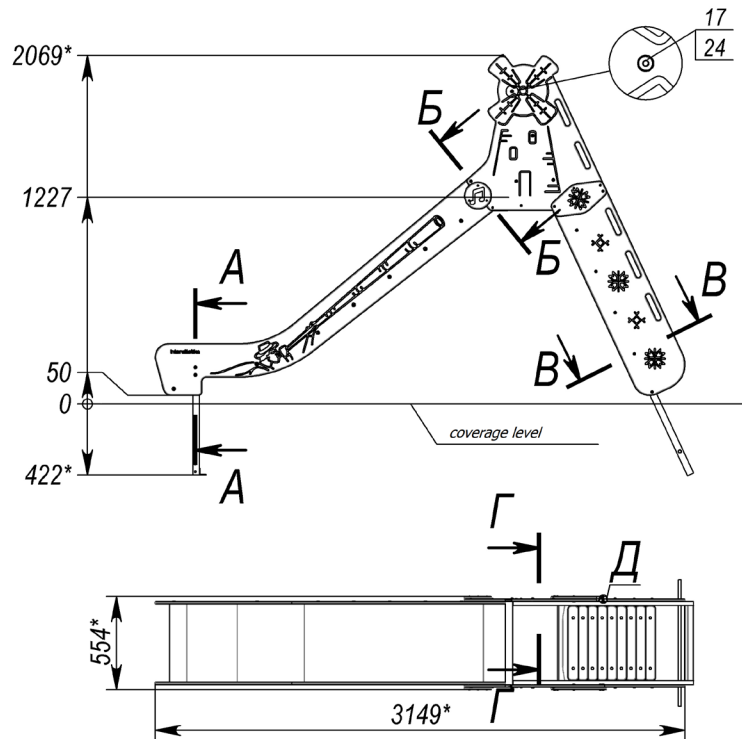


Picture 4 – LK320

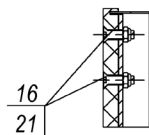


Picture 5 – LK320-COSMOS

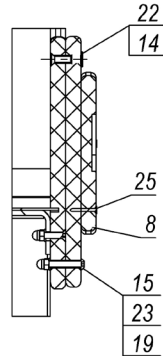




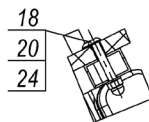
A-A (1 : 5)



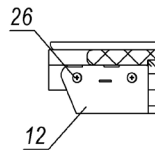
Б-Б (1 : 5)



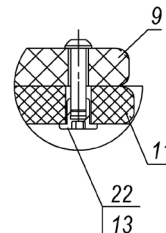
В-В (1 : 5)



Г-Г (1 : 5)

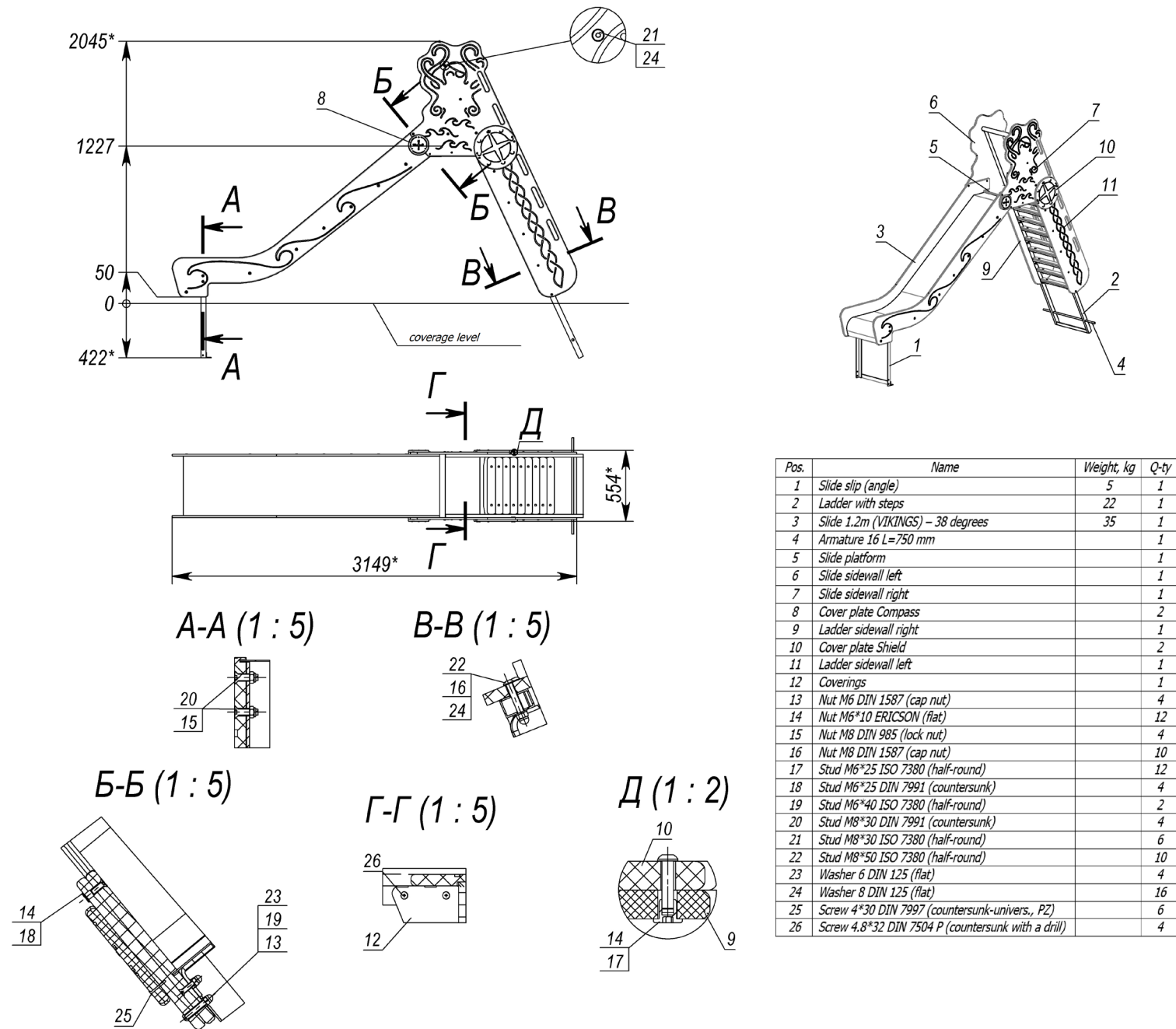


Д (1 : 2)

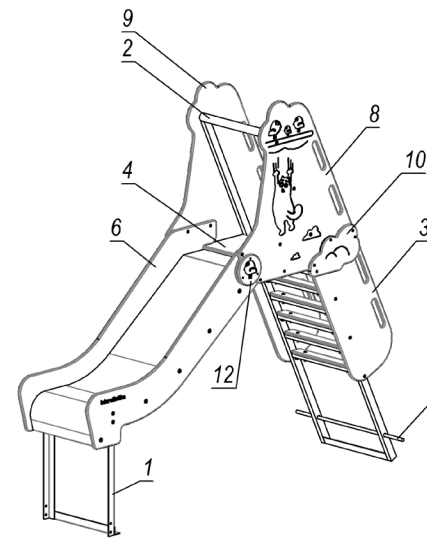
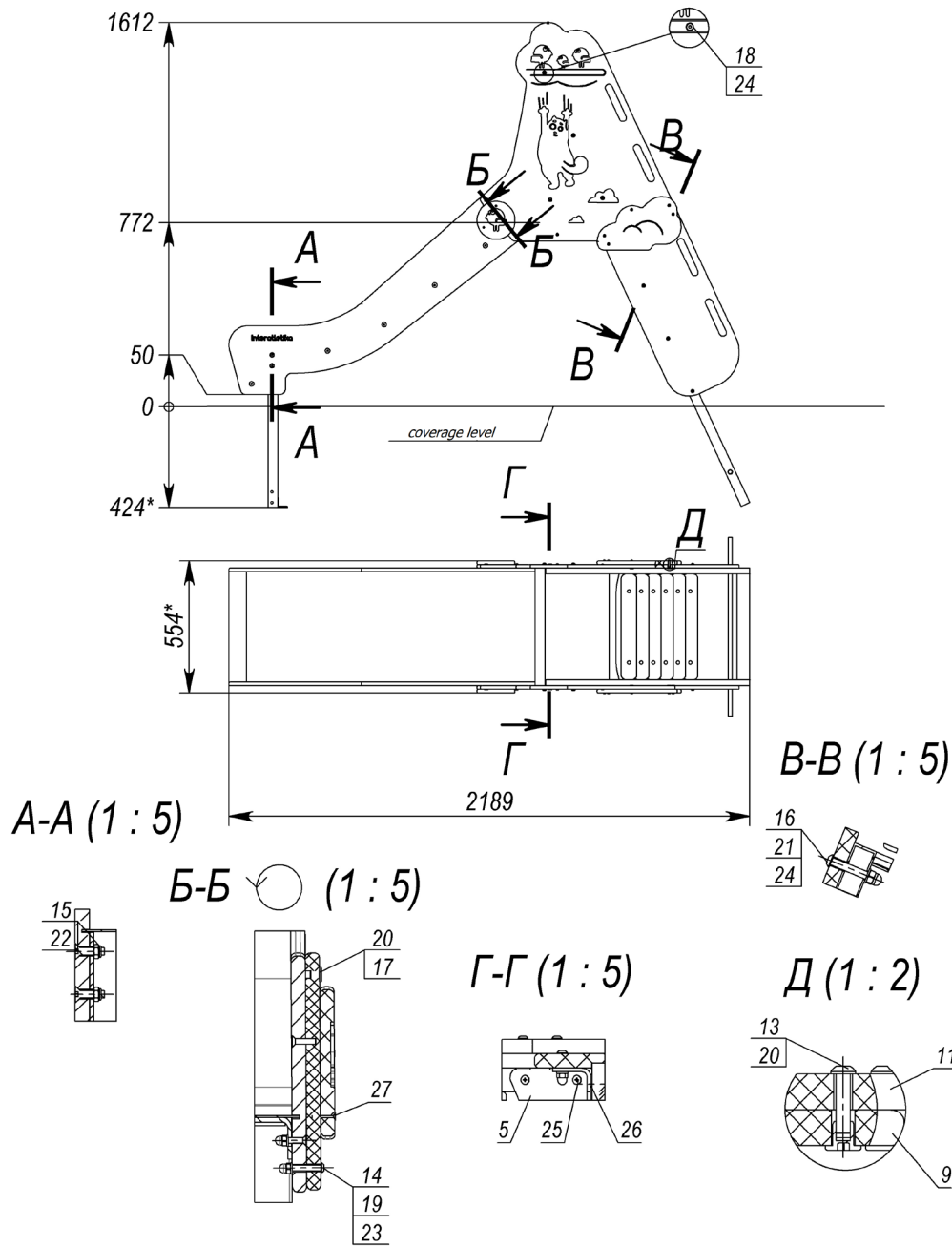


Pos.	Name	Weight, kg	Q-ty
1	Slide 1.2m (Ukraine) – 38 degrees	35	1
2	Ladder with steps	22	1
3	Slide slip (angle)	5	1
4	Armature 16 L=750 mm		1
5	Slide platform		1
6	Slide sidewall left		1
7	Slide sidewall right		1
8	Cover plate Musical note		2
9	Cover plate Cornflower		2
10	Railing right		1
11	Railing left		1
12	Coverings		1
13	Stud M6*25 ISO 7380 (half-round)		12
14	Stud M6*25 DIN 7991 (countersunk)		4
15	Stud M6*40 ISO 7380 (half-round)		2
16	Stud M8*30 DIN 7991 (countersunk)		4
17	Stud M8*30 ISO 7380 (half-round)		6
18	Stud M8*50 ISO 7380 (half-round)		10
19	Nut M6 DIN 1587 (cap nut)		4
20	Nut M8 DIN 1587 (cap nut)		10
21	Nut M8 DIN 985 (lock nut)		4
22	Nut M6*10 ERICSON (flat)		14
23	Washer 6 DIN 125 (flat)		4
24	Washer 8 DIN 125 (flat)		16
25	Screw 4*30 DIN 7997 (countersunk-univers., P2)		6
26	Screw 4.8*32 DIN 7504 P (countersunk with a drill)		4

Picture 6 – LK320-UKRAINE

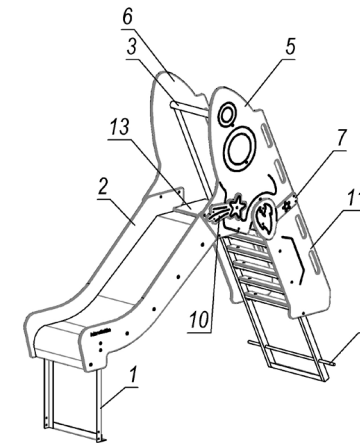
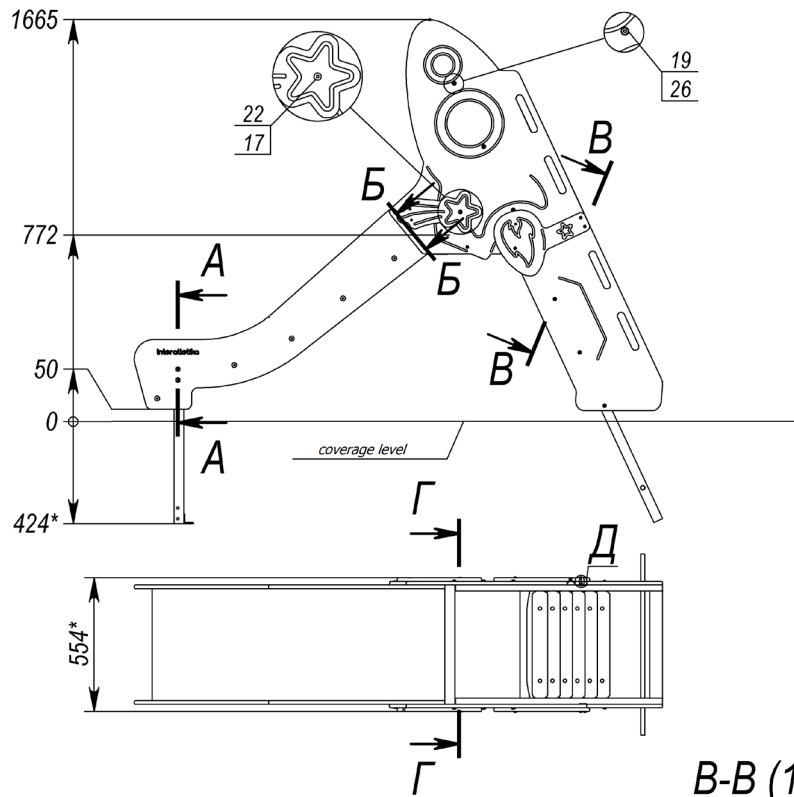


Picture 7 – LK320-VIKINGS

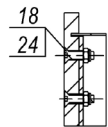


Pos.	Name	Weight, kg	Q-ty
1	Slide slip (angle)	5	1
2	Stairs with cover plates	17	1
3	Railing		2
4	Slide platform	2	1
5	Coverings		1
6	Slide 0.7 m 38 degrees	24	1
7	Armature 16 L=750 mm		1
8	Slide sidewall left		1
9	Slide sidewall right		1
10	Cloud left		1
11	Cloud right		1
12	Cover plate Bird		2
13	Stud M6*25 ISO 7380 (half-round)		12
14	Stud M6*40 ISO 7380 (half-round)		2
15	Stud M8*30 DIN 7991 (countersunk)		4
16	Stud M8*50 ISO 7380 (half-round)		6
17	Stud M6*25 DIN 7991 (countersunk)		4
18	Stud M8*30 ISO 7380 (half-round)		6
19	Nut M6 DIN 1587 (cap nut)		4
20	Nut M6*10 ERICSON (flat)		14
21	Nut M8 DIN 1587 (cap nut)		6
22	Nut M8 DIN 985 (lock nut)		4
23	Washer 6 DIN 125 (flat)		4
24	Washer 8 DIN 125 (flat)		12
25	Screw 4.8*32 DIN 7504 P (countersunk with a drill)		4
26	Screw 4*16 DIN 7997 (countersunk-univers., PZ)		2
27	Screw 4*30 DIN 7997 (countersunk-univers., PZ)		6

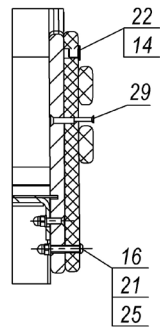
Picture 8 – LK321



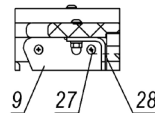
A-A (1 : 5)



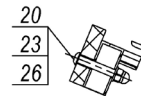
Б-Б (1 : 5)



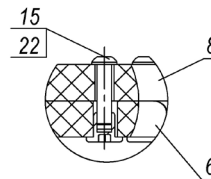
Г-Г (1 : 5)



В-В (1 : 5)

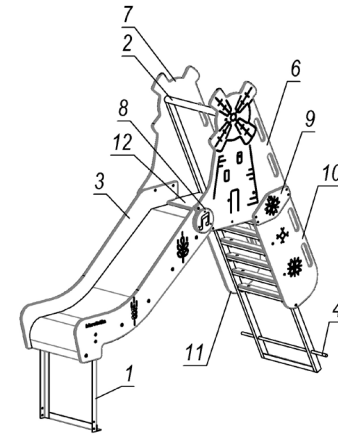
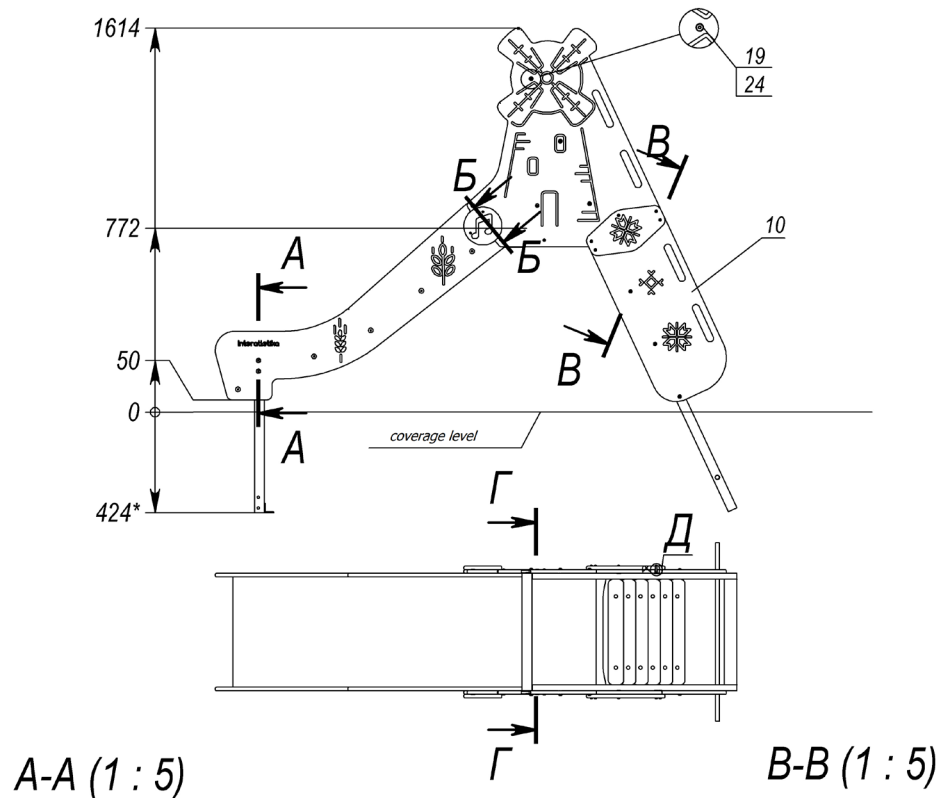


Д (1 : 2)



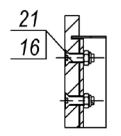
Pos.	Name	Weight, kg	Q-ty
1	Slide slip (angle)	5	1
2	Slide 0.7 m 38 degrees	24	1
3	Stairs with cover plates	17	1
4	Armature 16 L=750 mm		1
5	Slide sidewall left		1
6	Slide sidewall right		1
7	Cover plate Spark left		1
8	Cover plate Spark right		1
9	Coverings		1
10	Cover plate Star		2
11	Railing right		1
12	Railing left		1
13	Slide platform		1
14	Stud M6*25 DIN 7991 (countersunk)		2
15	Stud M6*25 ISO 7380 (half-round)		8
16	Stud M6*40 ISO 7380 (half-round)		2
17	Stud M6*40 DIN 7991 (countersunk)		2
18	Stud M8*30 DIN 7991 (countersunk)		4
19	Stud M8*30 ISO 7380 (half-round)		6
20	Stud M8*50 ISO 7380 (half-round)		6
21	Nut M6 DIN 1587 (cap nut)		4
22	Nut M6*10 ERICSON (flat)		10
23	Nut M8 DIN 1587 (cap nut)		6
24	Nut M8 DIN 985 (lock nut)		4
25	Washer 6 DIN 125 (flat)		4
26	Washer 8 DIN 125 (flat)		12
27	Screw 4.8*32 DIN 7504 P (countersunk with a drill)		4
28	Screw 4*16 DIN 7997 (countersunk-univers., PZ)		2
29	Screw 4*30 DIN 7997 (countersunk-univers., PZ)		6

Picture 9 – LK321-COSMOS

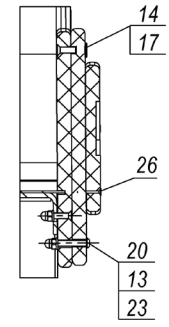
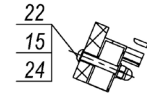


A-A (1 : 5)

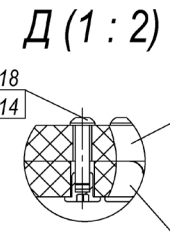
B-B (1 : 5)



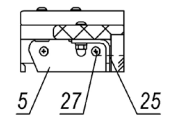
Б-Б (1 : 5)



Г-Г (1 : 5)

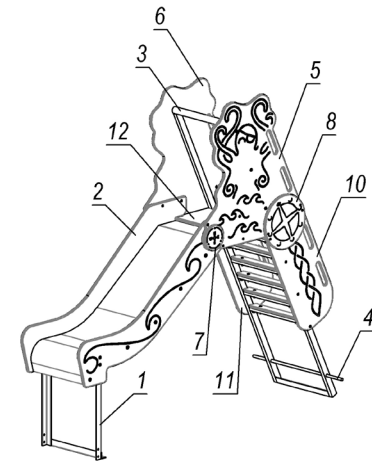
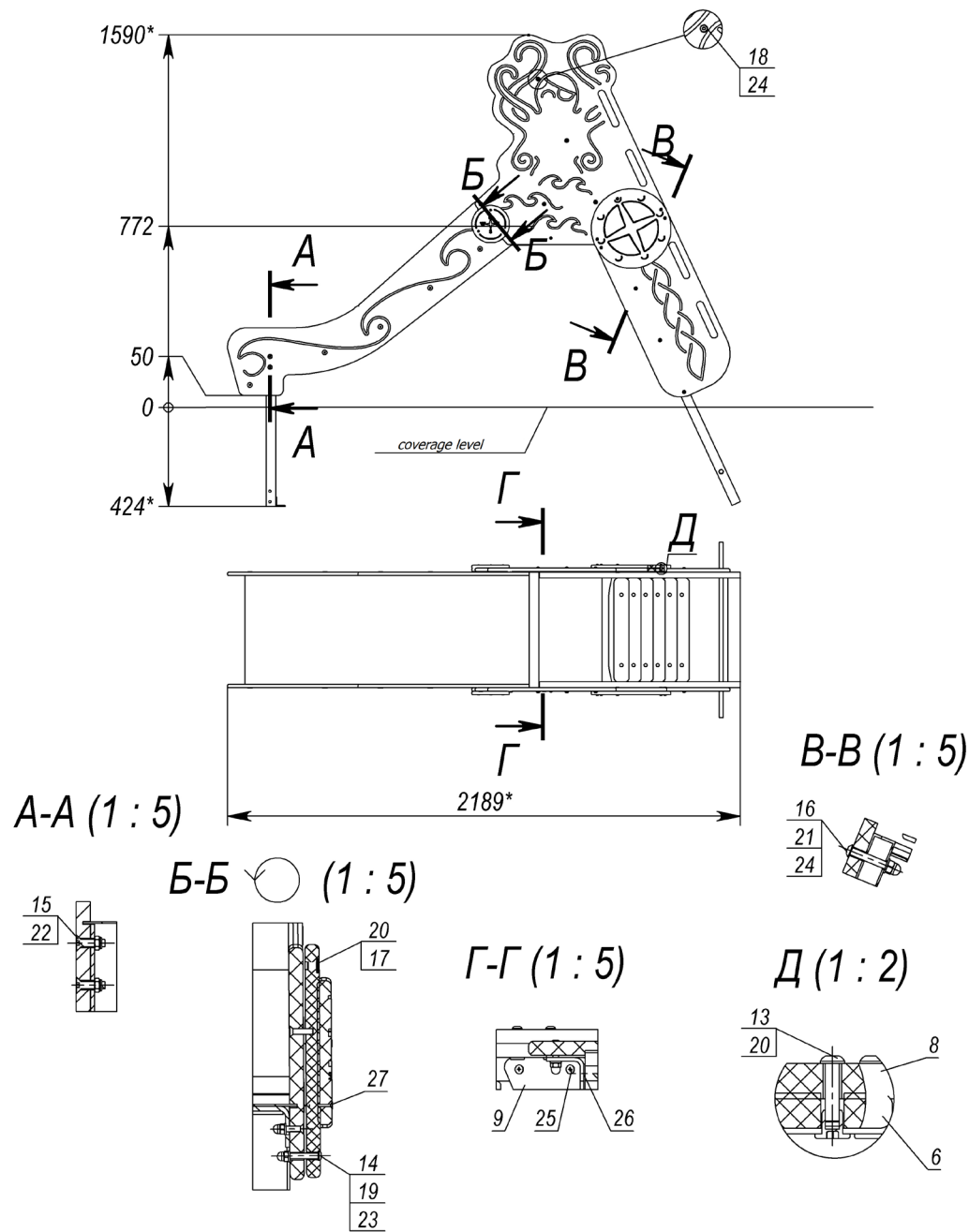


Д (1 : 2)



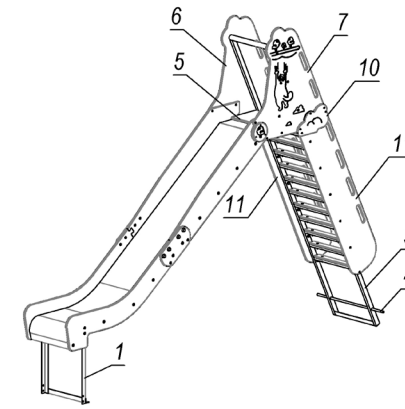
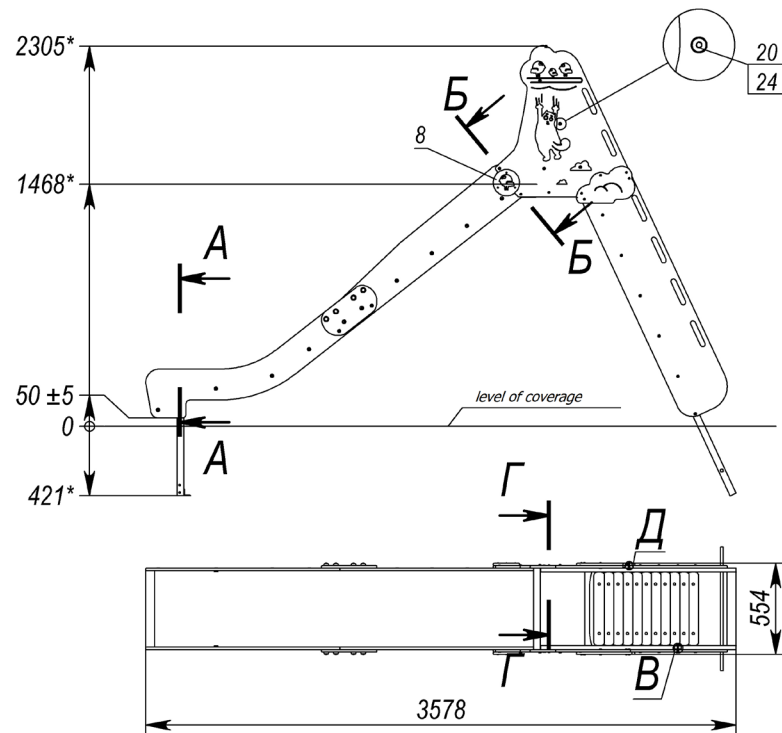
Pos.	Name	Weight, kg	Q-ty
1	Slide slip (angle)	5	1
2	Stairs with cover plates	17	1
3	Slide 0.7 m (UKRAINE) 38 degrees	24	1
4	Armature 16 L=750 mm		1
5	Coverings		1
6	Slide sidewall left		1
7	Slide sidewall right		1
8	Cover plate Musical note		2
9	Cover plate Cornflower		2
10	Stair railing right		1
11	Stair railing left		1
12	Slide platform		1
13	Nut M6 DIN 1587 (cap nut)		4
14	Nut M6*10 ERICSON (flat)		14
15	Nut M8 DIN 1587 (cap nut)		6
16	Nut M8 DIN 985 (lock nut)		4
17	Stud M6*25 DIN 7991 (countersunk)		4
18	Stud M6*25 ISO 7380 (half-round)		12
19	Stud M8*30 ISO 7380 (half-round)		6
20	Stud M6*40 ISO 7380 (half-round)		2
21	Stud M8*30 DIN 7991 (countersunk)		4
22	Stud M8*50 ISO 7380 (half-round)		6
23	Washer 6 DIN 125 (flat)		4
24	Washer 8 DIN 125 (flat)		12
25	Screw 4*16 DIN 7997 (countersunk-univers., PZ)		2
26	Screw 4*30 DIN 7997 (countersunk-univers., PZ)		6
27	Screw 4.8*32 DIN 7504 P (countersunk with a drill)		4

Picture 10 – LK321-UKRAINE

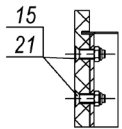


Pos.	Name	Weight, kg	Q-ty
1	Slide slip (angle)	5	1
2	Slide 0.7 m (VIKINGS) 38 degrees	23	1
3	Stairs with cover plates	17	1
4	Armature 16 L=750 mm		1
5	Slide sidewall left		1
6	Slide sidewall right		1
7	Cover plate Compass		2
8	Cover plate Shield		2
9	Coverings		1
10	Stair railing right		1
11	Stair railing left		1
12	Slide platform		1
13	Stud M6*25 ISO 7380 (half-round)		12
14	Stud M6*40 ISO 7380 (half-round)		2
15	Stud M8*30 DIN 7991 (countersunk)		4
16	Stud M8*50 ISO 7380 (half-round)		6
17	Stud M6*25 DIN 7991 (countersunk)		4
18	Stud M8*30 ISO 7380 (half-round)		6
19	Nut M6 DIN 1587 (cap nut)		4
20	Nut M6*10 ERICSON (flat)		14
21	Nut M8 DIN 1587 (cap nut)		6
22	Nut M8 DIN 985 (lock nut)		4
23	Washer 6 DIN 125 (flat)		4
24	Washer 8 DIN 125 (flat)		12
25	Screw 4.8*32 DIN 7504 P (countersunk with a drill)		4
26	Screw 4*16 DIN 7997 (countersunk-univers., PZ)		2
27	Screw 4*30 DIN 7997 (countersunk-univers., PZ)		6

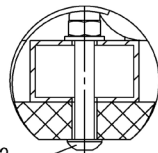
Picture 11 – LK321-VIKINGS



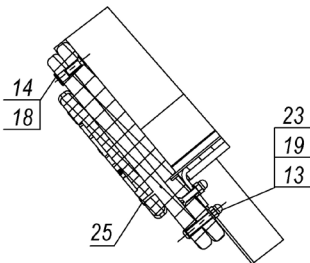
A-A (1 : 5)



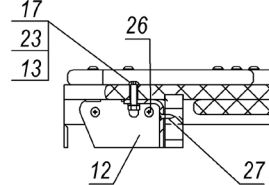
B (1 : 2)



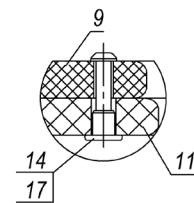
B-B (1 : 5)



Г-Г (1 : 5)

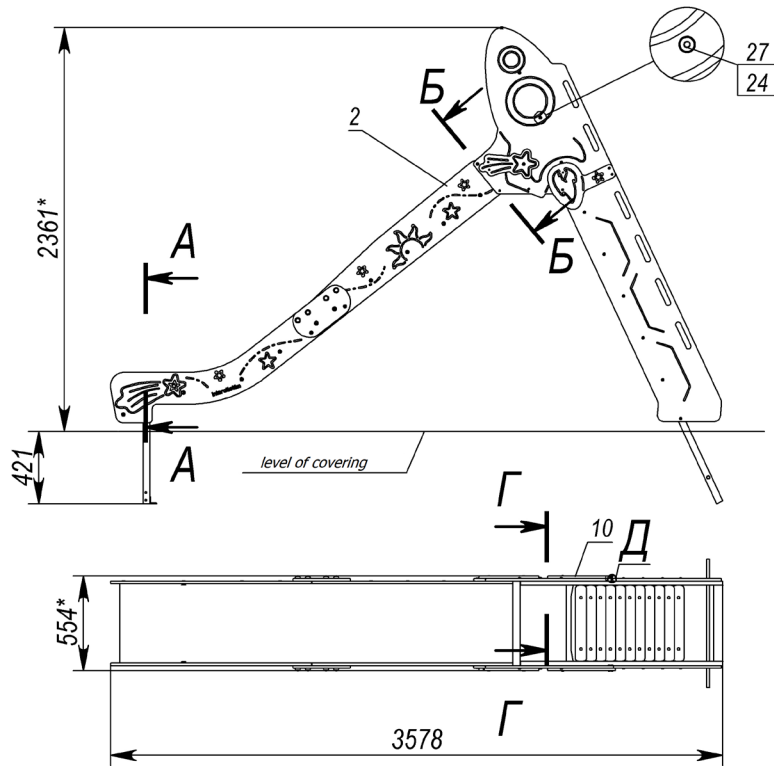


Д (1 : 2)

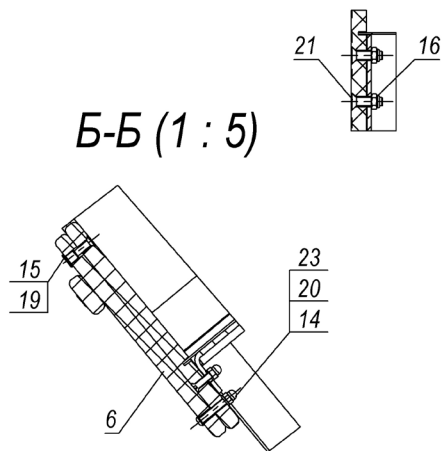


Pos.	Name	Weight, kg	Q-ty
1	Slide slip (angle)	5	1
2	Slide 1.5 m - 38 degrees	45	1
3	Ladder with steps	25	1
4	Armature 16 L=750 mm		1
5	Slide platform	2	1
6	Slide sidewall left		1
7	Slide sidewall right		1
8	Cover plate Bird		2
9	Cloud right		1
10	Cloud left		1
11	Ladder sidepart		2
12	Coverings		1
13	Nut M6 DIN 1587 (cap nut)		4
14	Nut M6*10 ERICSON (flat)		14
15	Nut M8 DIN 985 (lock nut)		4
16	Nut M8 DIN 1587 (cap nut)		12
17	Stud M6*25 ISO 7380 (half-round)		12
18	Stud M6*25 DIN 7991 (countersunk)		4
19	Stud M6*40 ISO 7380 (half-round)		2
20	Stud M8*25 ISO 7380 (half-round)		6
21	Stud M8*30 DIN 7991 (countersunk)		4
22	Stud M8*50 ISO 7380 (half-round)		12
23	Washer 6 DIN 125 (flat)		4
24	Washer 8 DIN 125 (flat)		18
25	Screw 4*30 DIN 7997 (countersunk-univers., PZ)		6
26	Screw 4.8*32 DIN 7504 P (countersunk with a drill)		4
27	Screw 4*16 DIN 7997 (countersunk-univers., PZ)		2

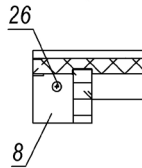
Picture 12 – LK322



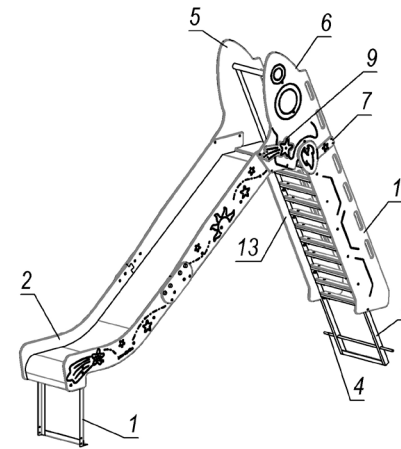
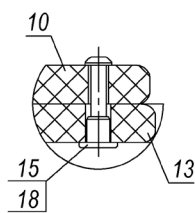
A-A (1 : 5)



Г-Г (1 : 5)



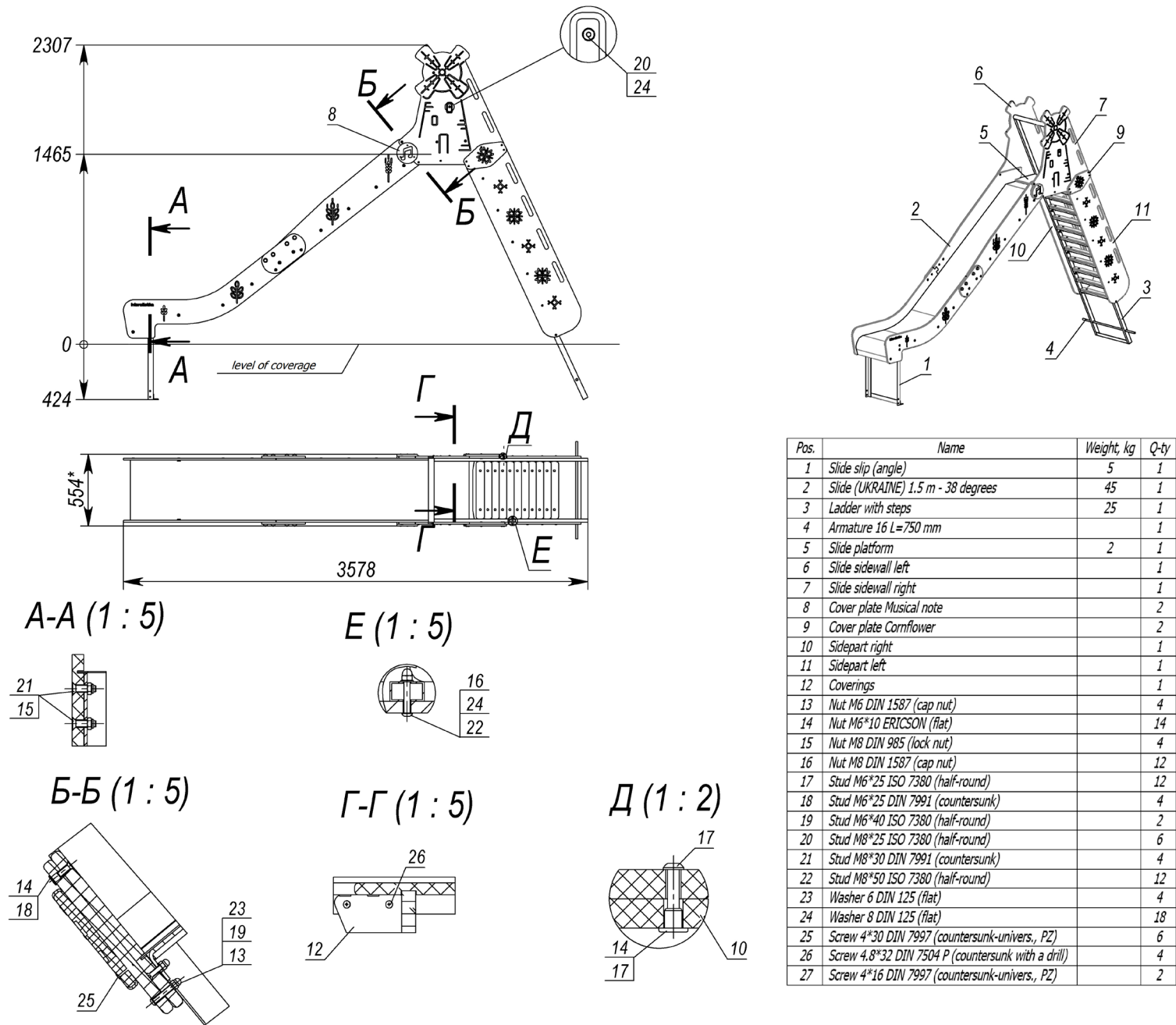
Д (1 : 2)



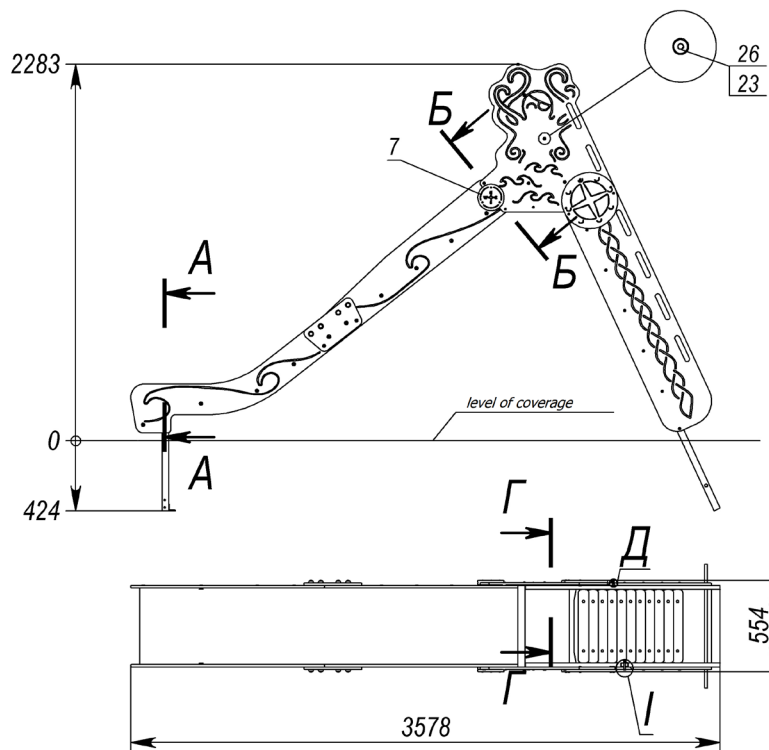
Pos.	Name	Weight, kg	Q-ty
1	Slide slip (angle)	5	1
2	Slide (COSMOS) 1.5m - 38 degrees	45	1
3	Ladder with steps	25	1
4	Armature 16 L=750 mm		1
5	Slide sidewall left		1
6	Slide sidewall right		1
7	Cover plate Spark left		1
8	Coverings		1
9	Cover plate Star		2
10	Cover plate Spark right		1
11	Slide platform		1
12	Stair railing right		1
13	Stair railing left		1
14	Nut M6 DIN 1587 (cap nut)		4
15	Nut M6*10 ERICSON (flat)		10
16	Nut M8 DIN 985 (lock nut)		4
17	Nut M8 DIN 1587 (cap nut)		12
18	Stud M6*25 ISO 7380 (half-round)		8
19	Stud M6*25 DIN 7991 (countersunk)		4
20	Stud M6*40 ISO 7380 (half-round)		2
21	Stud M8*30 DIN 7991 (countersunk)		4
22	Stud M8*50 ISO 7380 (half-round)		12
23	Washer 6 DIN 125 (flat)		4
24	Washer 8 DIN 125 (flat)		18
25	Screw 4*30 DIN 7997 (countersunk-univers., PZ)		4
26	Screw 4.8*32 DIN 7504 P (countersunk with a drill)		4
27	Stud M8*25 ISO 7380 (half-round)		6
28	Screw 4*16 DIN 7997 (countersunk-univers., PZ)		2

Picture 13 – LK322-COSMOS

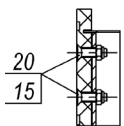




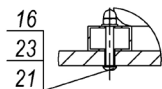
Picture 14 – LK322-UKRAINE



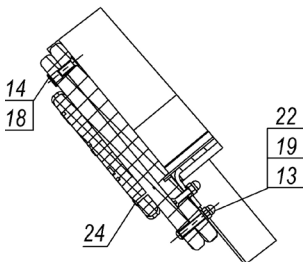
A-A (1 : 5)



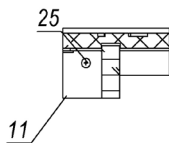
I (1 : 5)



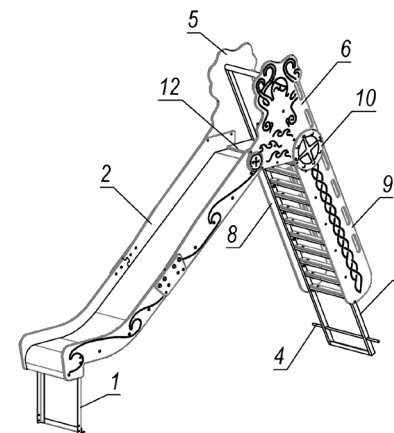
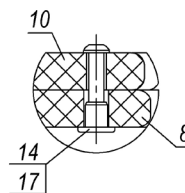
Б-Б (1 : 5)



Г-Г (1 : 5)



Д (1 : 2)



Pos.	Name	Weight, kg	Q-ty
1	Slide slip (angle)	5	1
2	Slide (VIKINGS) 1.5m - 38 degrees	45	1
3	Ladder with steps	25	1
4	Armature 16 L=750 mm		1
5	Slide sidewall left		1
6	Slide sidewall right		1
7	Cover plate Compass		2
8	Sidepart right		1
9	Sidepart left		1
10	Cover plate Shield		2
11	Coverings		1
12	Slide platform		1
13	Nut M6 DIN 1587 (cap nut)		4
14	Nut M6*10 ERICSON (flat)		14
15	Nut M8 DIN 985 (lock nut)		4
16	Nut M8 DIN 1587 (cap nut)		12
17	Stud M6*25 ISO 7380 (half-round)		12
18	Stud M6*25 DIN 7991 (countersunk)		4
19	Stud M6*40 ISO 7380 (half-round)		2
20	Stud M8*30 DIN 7991 (countersunk)		4
21	Stud M8*50 ISO 7380 (half-round)		12
22	Washer 6 DIN 125 (flat)		4
23	Washer 8 DIN 125 (flat)		18
24	Screw 4*30 DIN 7997 (countersunk-univers., PZ)		6
25	Screw 4.8*32 DIN 7504 P (countersunk with a drill)		4
26	Stud M8*25 ISO 7380 (half-round)		6
27	Screw 4*16 DIN 7997 (countersunk-univers., PZ)		2

Picture 15 – LK322-VIKINGS