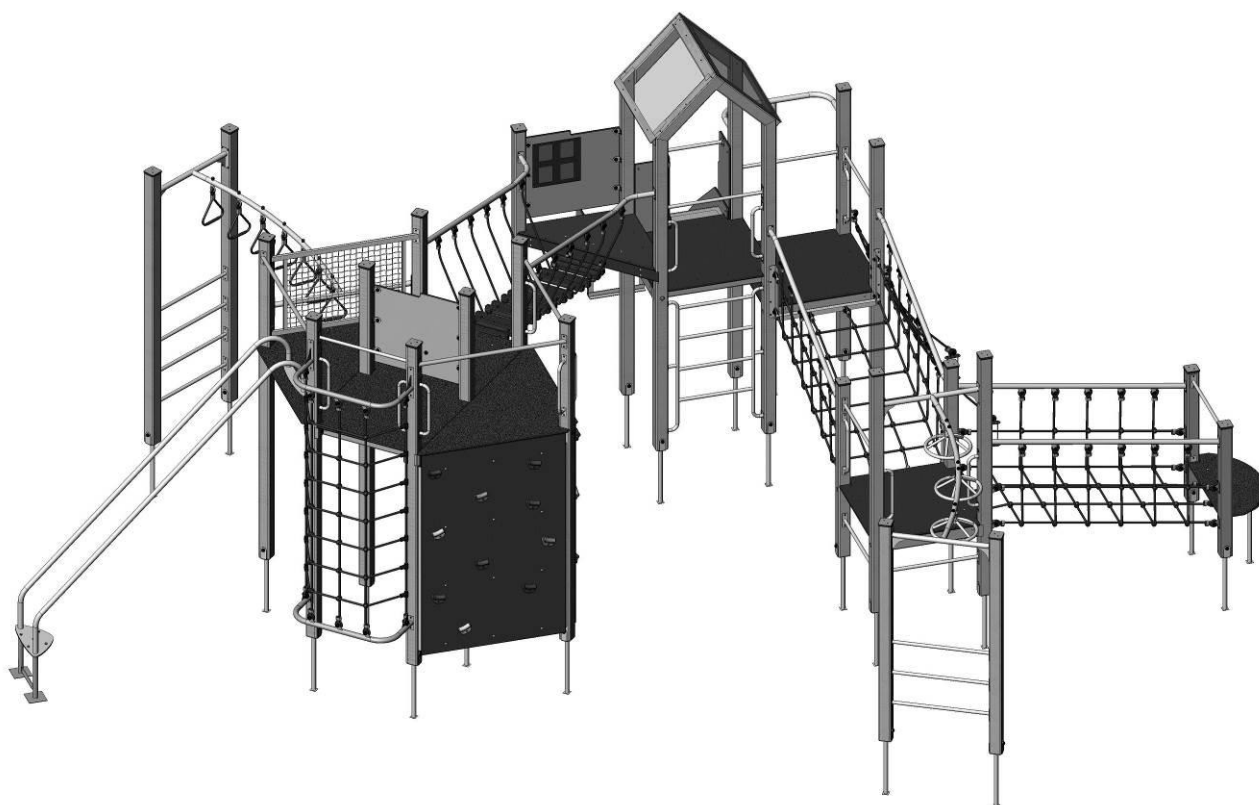


DATA SHEET

Playground complex «Big City-8» TE938



CONTENT

1. GENERAL INFORMATION	Ошибка! Закладка не определена.
2. ASSEMBLING AND INSTALLATION OF THE PRODUCT	Ошибка! Закладка не определена.
3. PRODUCT USE	Ошибка! Закладка не определена.
4. PRODUCT MAINTENANCE	Ошибка! Закладка не определена.
5. STORAGE, TRANSPORT AND DISPOSAL INFORMATION	Ошибка! Закладка не определена.
6. TECHNICAL DATA AND ASSEMBLY SCHEMES	Ошибка! Закладка не определена.

FOR NOTES

This image shows a single sheet of white paper with horizontal ruling lines. The lines are evenly spaced and run across the width of the page. There are no margins, text, or other markings on the paper.

1. GENERAL INFORMATION

Purpose and content of this document. This document contains general description of the equipment, information on installation, intended use, maintenance, repair and manufacturer's warranty.

Distribution of this document for product modifications. Manufacturer can make changes to the product design to improve its performance, change the design, etc. This document may not contain a description of such changes, but applies to the following modified products.

2. ASSEMBLING AND INSTALLATION OF THE PRODUCT

Tools and accessories. The product does not include the tools required for installation.

Procedure of assembling and installing the product.

- 1) Mark the area according to the foundation location scheme.
- 2) Make the digs for installation of the embedded parts and the attachments. The depth of these digs leveled by deepening or adding the gravel.
- 3) Assemble and install the equipment in accordance with the assembly schemes - chapter 7.
- 4) To concrete the embedded parts and support constructions of the attachment elements. During installation of equipment on a sand soil, overall sizes of the digs must be increased by 15-20%.

To avoid cracking of the wood, it is necessary to drill the holes with diameter 0,6..0,7 of the start diameter and depth up to 0,8 of it's length for the screws with diameter more than 4 mm.

WARNING! The presence and participation of the children in the process of installation of the equipment is not allowed.

3. PRODUCT USE

Do not use the product until it has been fully and completely installed.

Do not use the product by users of a different age and weight category.

Before using the product, clear the safety zone of unnecessary objects that may cause harm to the user (debris, tools left after assembly and installation, etc.).

Do not use the product in adverse weather conditions (ice, snow, rain, hail, strong winds, etc.), which may cause injury to the user.

4. PRODUCT MAINTENANCE

You have purchased high-quality and reliable equipment. In the process of its production, the requirements of regulatory and technical documents of Ukraine, the CIS countries and the European Union regulating the production of children's gaming equipment were taken into account. However, it should not be forgotten that when operating any technical product, certain rules and requirements must be followed. Despite the fact that our product is of high quality and reliability, this rule applies to it in full. You should be aware that the implementation of the following rules and recommendations for product maintenance is aimed at ensuring that your child, the child of your friends or acquaintances is safe and no unforeseen factors threaten his health, life.

Remember that the operation of the product is accompanied by the influence of various negative factors on it, a complete list of which cannot be predicted. Among them, an important place is occupied by natural factors and factors caused by human influence on equipment. As a rule, their action initially leads to disruptions in the appearance of the product. Thus, under the influence of factors caused by the exploitation of a person, there may be damage to the integrity of the paint coating of parts made of wood, in the form of scuffs, chips, incisions, and when exposed to parts made of metal, damage to the paint coating in the form of nicks, chips, abrasion, etc. This leads to the emergence and development of defects that can be the cause of the destruction of the product. The product is particularly dangerous if it is used for other than its intended purpose, if the permissible loads are exceeded, or if vandalism occurs, as these factors can cause irreversible changes in the structure of the material from which the product is made, leading to destruction.

The maintenance of the product implies, first of all, the responsibility of the user to comply with all recommendations provided in this document, starting with a daily inspection of the external condition of the product before operation.

Daily inspection of the product is a very important procedure. With its help, you can timely detect any changes in the appearance of the product (deformation of individual parts, deformation of the structure as a whole or part of it, damage to parts, cracks of welds, as well as the absence of fastening of parts of the product, etc.).

Before using the product, check its operability, absence of damage, dirt on the product, sharp edges, reliability of fixing the structure, absence of unnecessary objects on the surface of the site. If the product is damaged, fully or partially inoperable, or has any other defects, do not use it.

During operation it is also necessary to inspect the condition of the product periodically - the current inspection. It includes an external inspection of the product, checking its operability (in the presence of moving elements - the smoothness of the movement of mechanisms, compliance with operating modes, etc.). Current inspection allows you to detect malfunctions caused by the operation of equipment, climatic conditions, acts of vandalism and other factors, until they reach a critical level and the destruction of the product. The current inspection is carried out in order to detect foreign objects that may threaten the user and lead to violations of the functioning of the product. The frequency of the current inspection is set by the owner taking into account the operating conditions. If you do not have sufficient technical knowledge and skills to conduct such inspections, we recommend you to contact the authorized specialists of the manufacturer in order to obtain advice.

Every three months, a scheduled inspection should be carried out, which primarily concerns the foundation part, load-bearing elements and connection nodes of elements (their integrity and degree of deterioration).

The main annual inspection must be carried out annually by authorised specialists of the manufacturer. During the inspection, the technical condition of the equipment shall be assessed for compliance with safety requirements. The degree of deterioration and damage to wooden elements and their ability to withstand the applied loads, damage, corrosion of metal elements and the impact of these factors on the safety of the product are determined. The inspection also helps to identify the impact of repairs, if any, on the safety of the equipment.

Based on the results of the inspection, a maintenance procedure is carried out to eliminate the identified discrepancies in the product's operation. This procedure includes assessing the condition of parts and assemblies, replacing worn parts, and restoring the integrity of protective coatings. The results of the inspections, as well as the procedures carried out as a result of the inspection and maintenance of the product must be properly documented in the Registration Journal, which is an integral part of this passport. The owner of the product must keep the acts of maintenance of the product, acts of repair work.

5. STORAGE, TRANSPORT AND DISPOSAL INFORMATION

The product is transported in the manufacturer's packaging by any means of transport that ensures its safety and protection from external factors (rain, snow, sunlight, water, high humidity, etc.).

Information about transportation

Date		Brand, state number of the ca/trailer	Position, full name	Signature
Departure	Arrival			

Before installation, store the product in the original packaging in dry, closed rooms with natural air ventilation.

If it is necessary to transport the product to another location after use, it is recommended to use the manufacturer's packaging.

If long-term storage of the product is required, the following storage rules must be observed (the list of conditions is not complete):

- place the product in a closed dry room with natural ventilation;
- protect the product from external factors (dust, water drops, etc.) with a large plastic bag, leaving space for free air circulation;

- take other measures to preserve the appearance and characteristics of the product during storage.

When removing the product from storage and preparing for installation, follow the next recommendations:

- remove the product from the packaging material (polyethylene, cardboard, other packaging materials);
- remove dust and other contaminants from the surface of the product;
- check completeness and absence of parts damage.

Storage information

Date		Product storage conditions	Full name	Signature
Putting into storage	Removal from storage			

After the end of the equipment's service life, the buyer independently determines the procedure for its use. If you decide to recycle, contact the seller or specialized organizations.

The equipment does not contain harmful impurities and materials that can harm your health and is not subject to special recycling.

6. TECHNICAL DATA AND ASSEMBLY SCHEMES

Length, mm

8572

Width, mm

8069

Height, mm

3460

Weight, kg

1079

Height of fall, mm

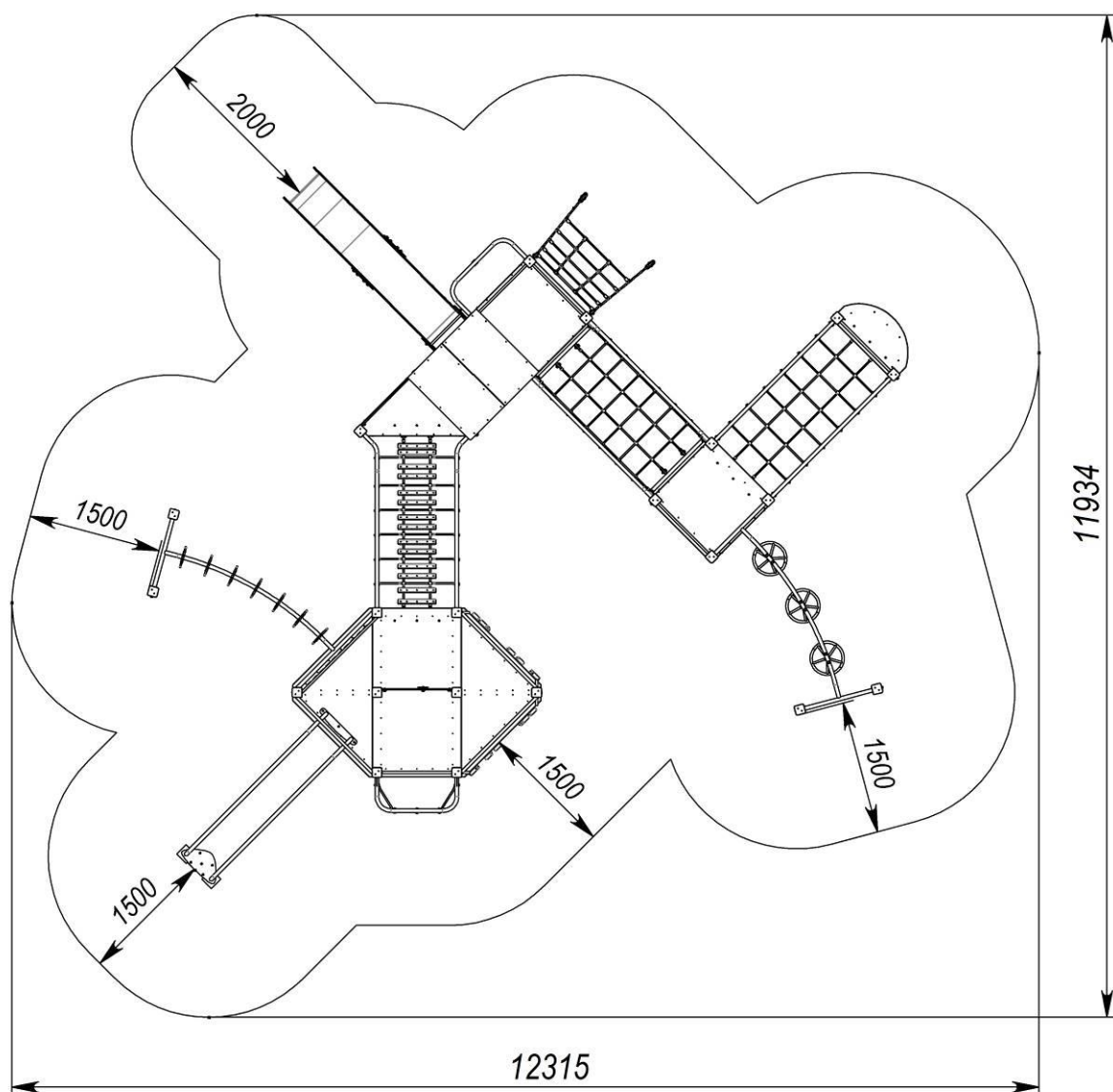
2028

Age restrictions, years

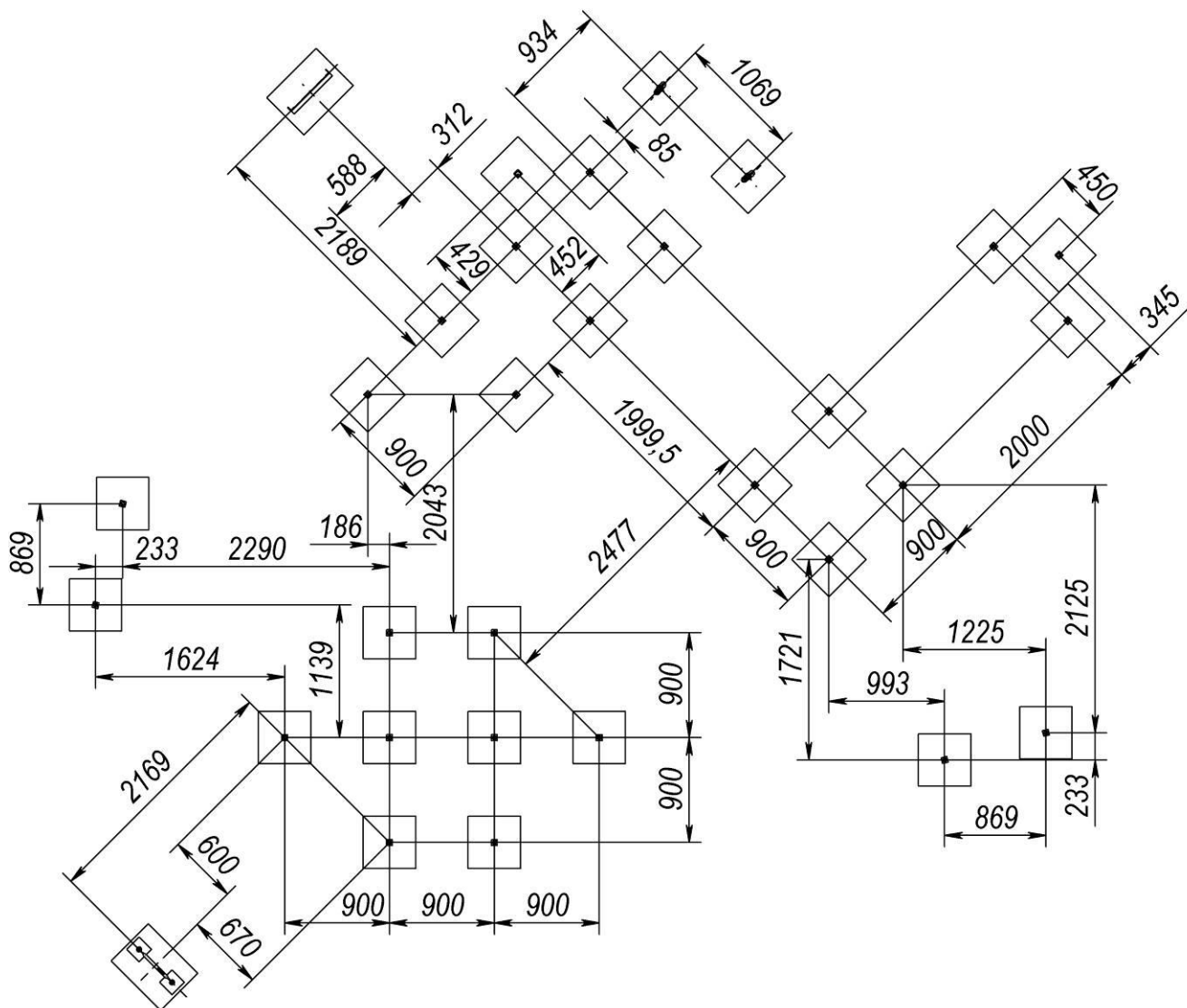
Up to 12

Weight limits, kg

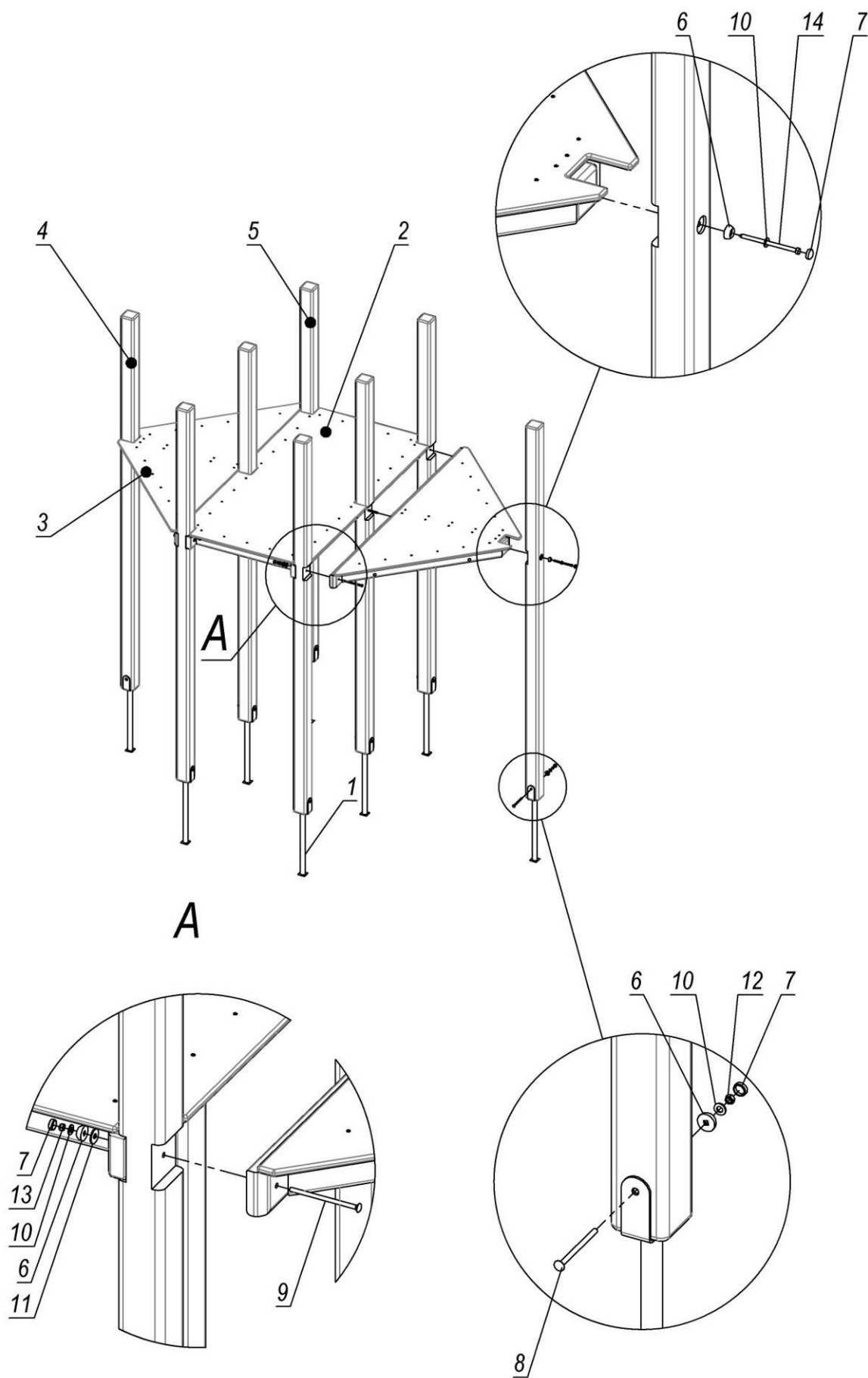
Up to 60



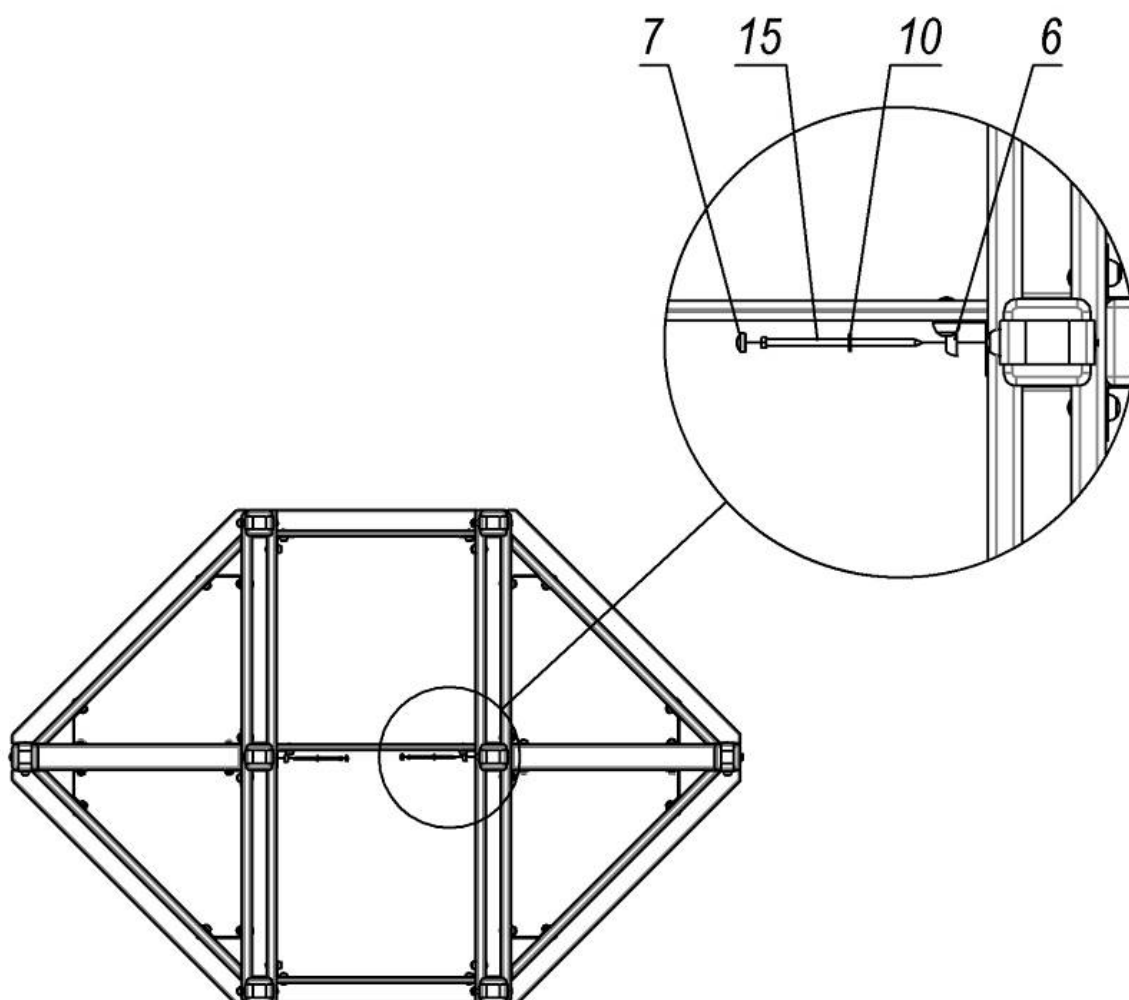
Picture 1 – Landing zone



Picture 2 - Layout of foundations

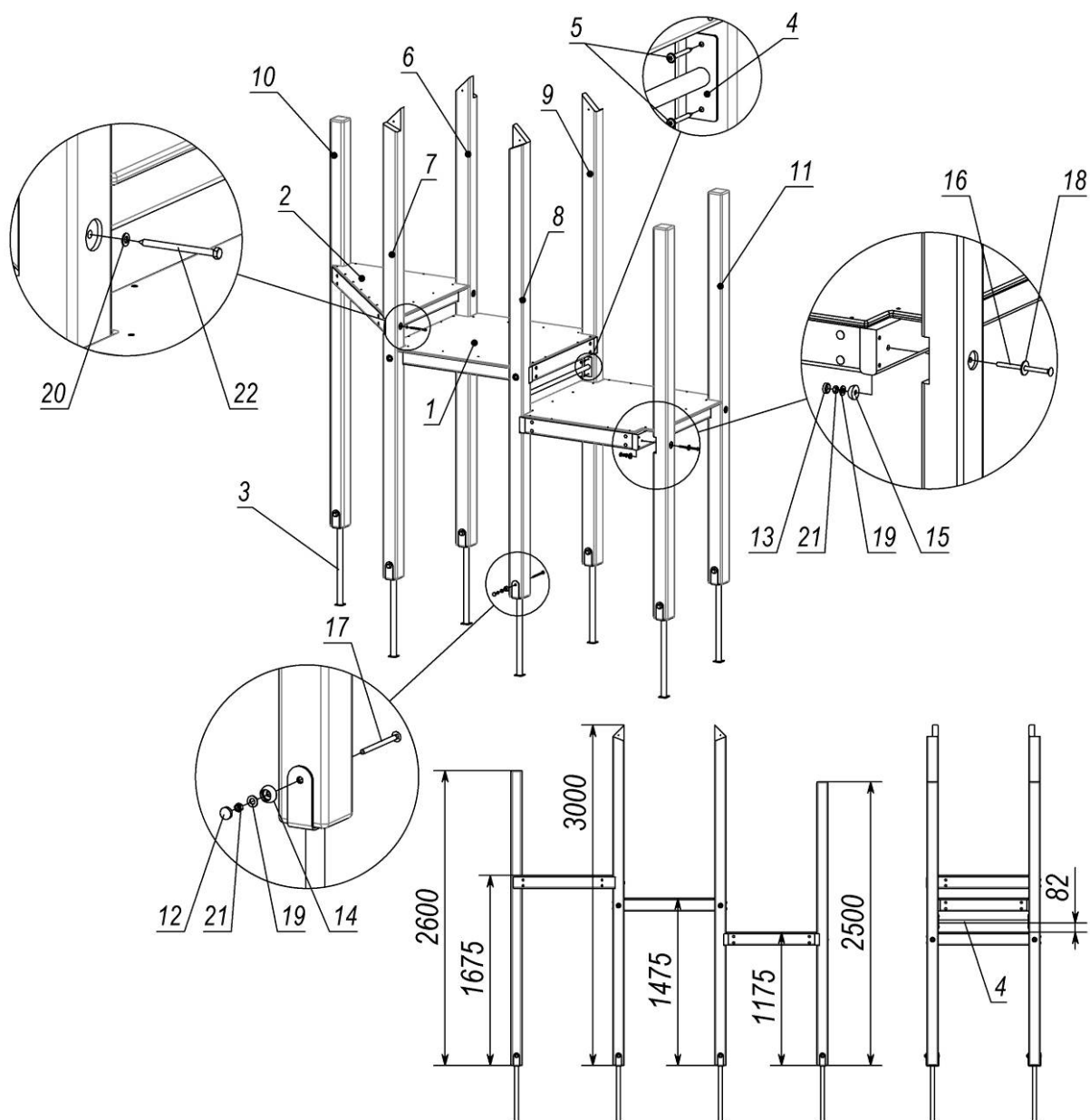


Picture 3



<i>Pos.</i>	<i>Name</i>	<i>Weight, kg</i>	<i>Q-ty</i>
1	Beam support	2	8
2	Double site 1.9x1m	35	1
3	Double site 1.9x1m corner	29	2
4	Beam 2.95m (mortise 2m)	17	2
5	Beam 2.95m (mortises 2m)	17	6
6	Cup M8		16
7	Cap M8		16
8	Bolt M8*120 GOST7802		8
9	Bolt M8*150 GOST7802		4
10	Washer 10 GOST11371		16
11	Washer 10 GOST6958		4
12	Nut M8 GOST5915		8
13	Nut M8 DIN985		4
14	Screw 8x140 GOST11473		2
15	Screw 8x180 GOST11473		2

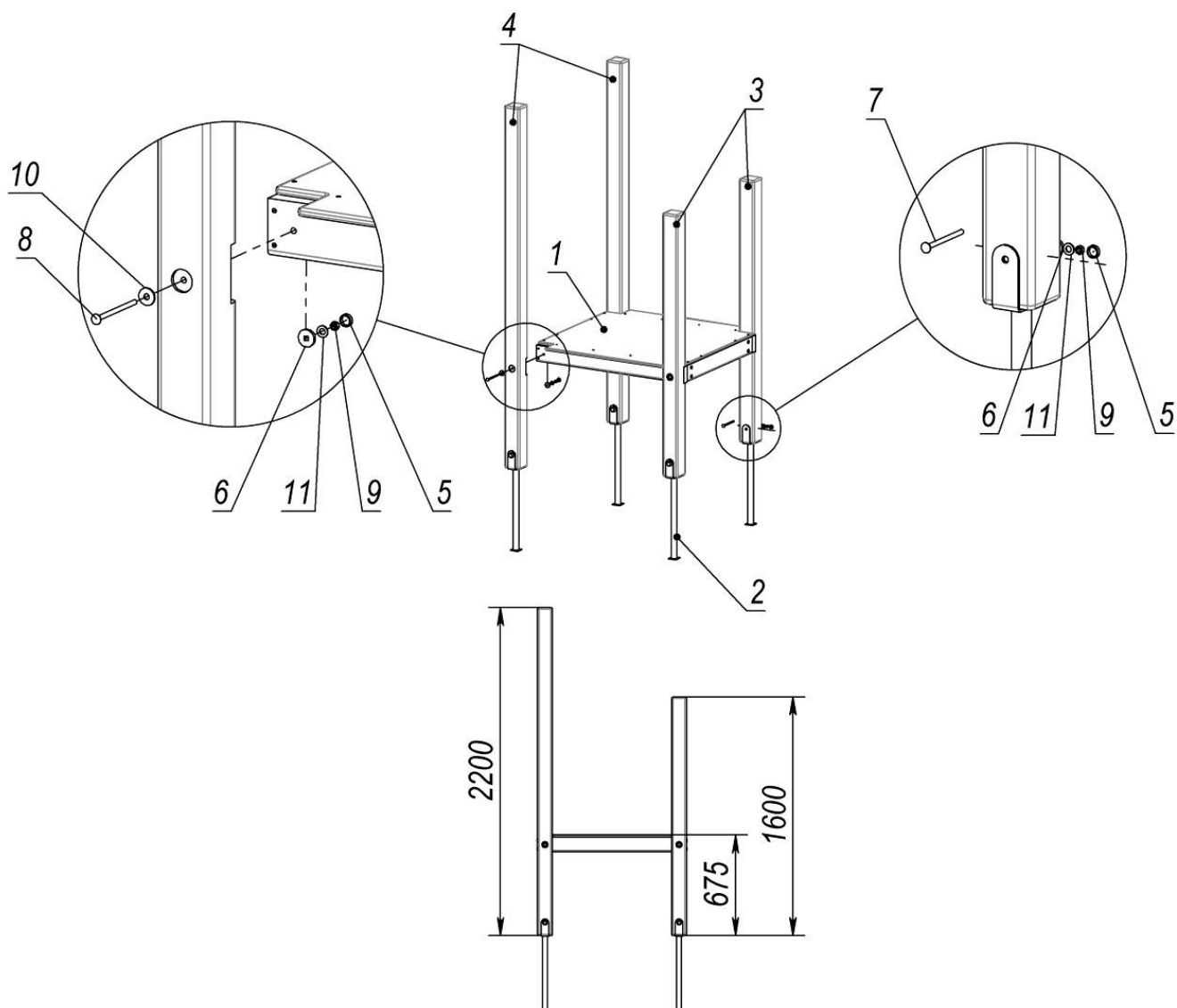
Picture 3.1 – Big tower hexagonal (2m)



Pos.	Name	Weight, kg	Q-ty
1	Site 1x1m (standard)	19	2
2	3-sided site	14	1
3	Beam support	2	7
4	Brace rod 0.8m	1	1
5	Screw 6.0x60 SPAX T-STAR plus (univers.)		4
6	Beam 3m mortises 1.7-1.5m	17	1
7	Beam 3m mortises 1.7-1.5m	17	1
8	Beam 3m mortises 1.5-1.2m	17	1
9	Beam 3m mortises 1.5-1.2m	17	1
10	Beam 2.6m mortise 1.7m	15	1
11	Beam 2.5m (mortise 1.5m)	15	2

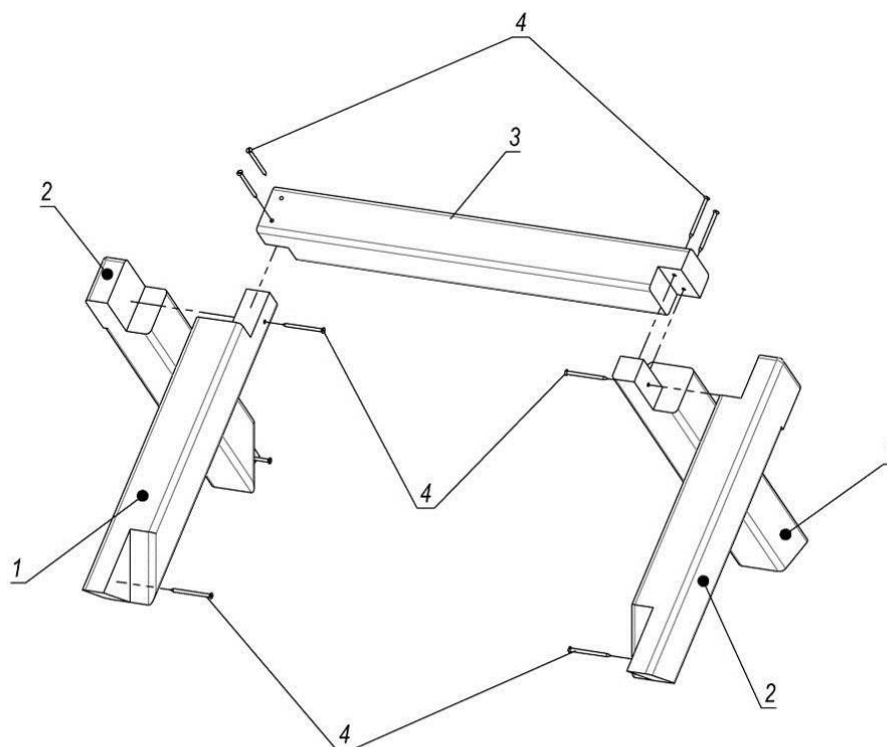
Pos.	Name	Weight, kg	Q-ty
12	Cap M8		12
13	Cap M8		5
14	Cup M8		12
15	Cup M8		5
16	Bolt M8*130 GOST7802		10
17	Bolt M8*120 GOST7802		7
18	Washer 10 GOST6958		10
19	Washer 10 GOST11371		17
20	Washer 8 GOST11371		1
21	Nut M8 GOST5915		17
22	Screw 8x110 GOST11473		1

Picture 4 – Triple corner tower (1,7-1,5-1,2m)

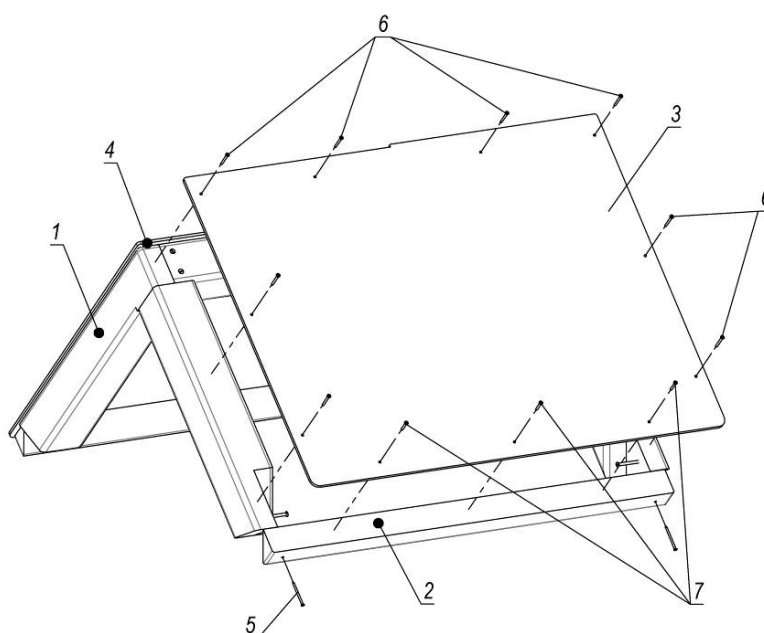


Pos.	Name	Weight, kg	Q-ty
1	Site 1x1m	19	1
2	Beam support	2	4
3	Beam 1.6m (mortise 0.7m)	9	2
4	Beam 2.2m (mortise 0.7m)	13	2
5	Cap M8		8
6	Cup M8		8
7	Bolt M8*120 GOST7802		4
8	Bolt M8*130 GOST7802		4
9	Nut M8 GOST5915		8
10	Washer 10 GOST6958		4
11	Washer 10 GOST11371		8

Picture 5 – Tower 0,7m (Beam 1,6-2,2m)

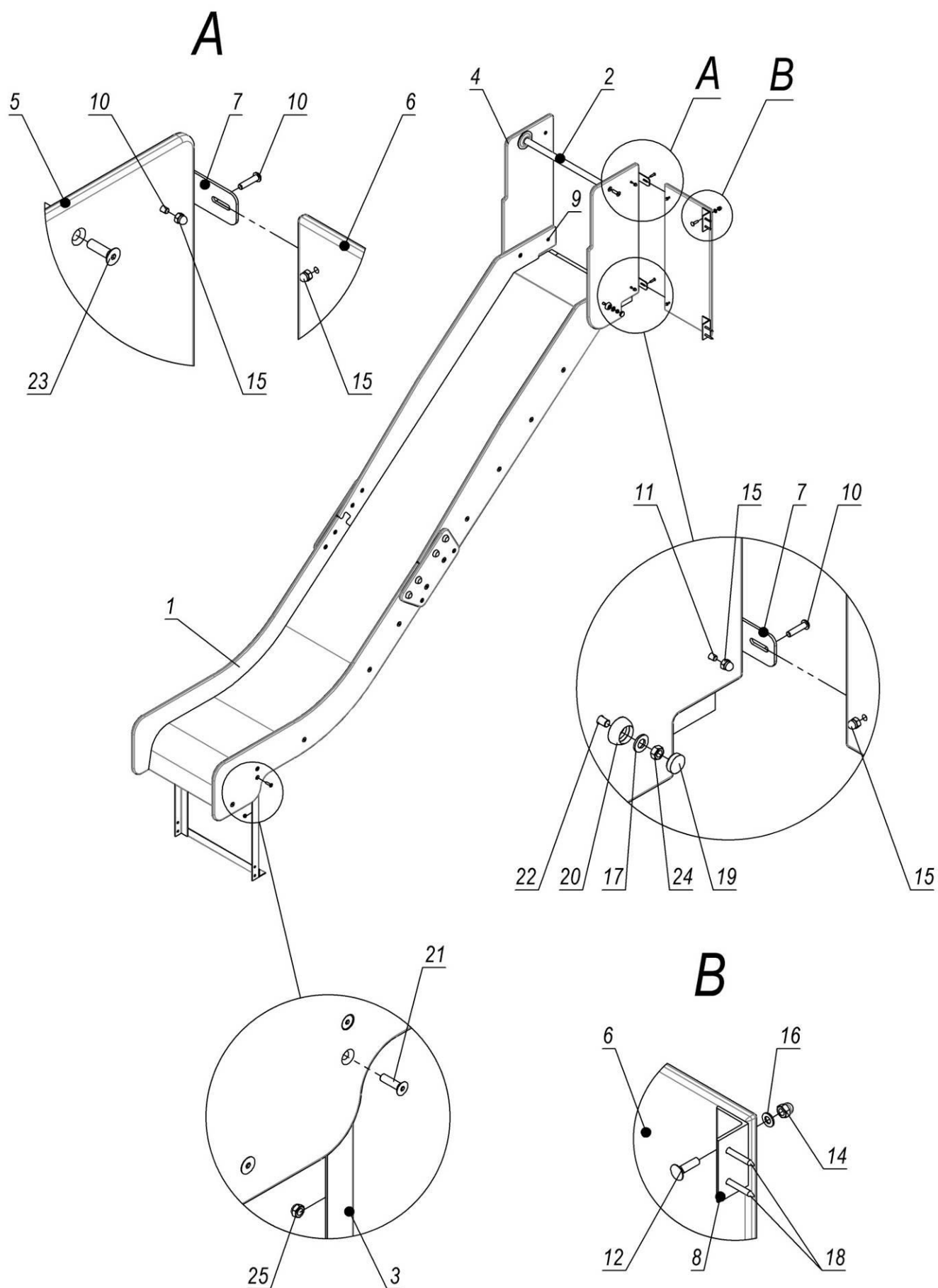


Pos.	Name	Weight, kg	Q-ty
1	Rear pediment		2
2	Front pediment		2
3	Ridge (100x100x900)	5	1
4	Screw 6x90 GOST1145		10

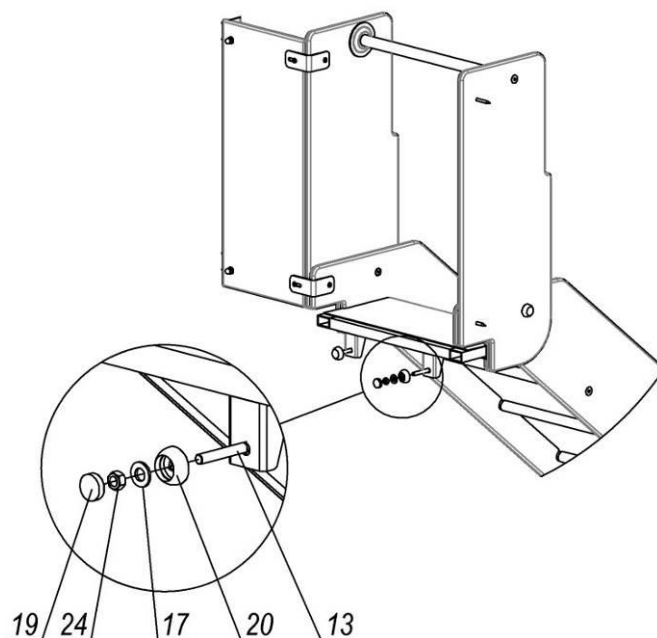


Pos.	Name	Weight, kg	Q-ty
1	Roof	19	1
2	Bar 970 mm		2
3	Roof slope (775x1000)	5	1
4	Roof slope (775x1000)	5	1
5	Screw 4x60 GOST1145		4
6	Screw 4x40 GOST1144		16
7	Screw 4x30 GOST1144		6

Picture 6 – Roof assembly scheme

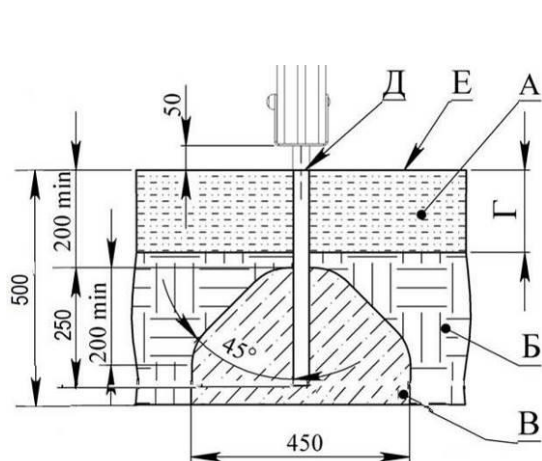


Picture 7

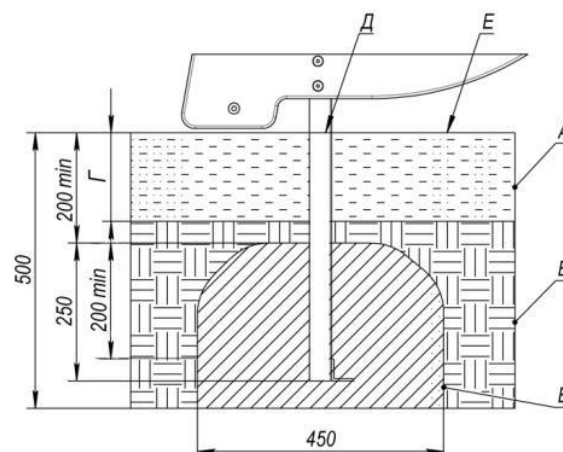


<i>Pos.</i>	<i>Name</i>	<i>Weight, kg</i>	<i>Q-ty</i>
1	Slide 1.5m	44	1
2	Brace rod 493 mm	1	1
3	Slide embedded element	5	1
4	Upper right sidewall	3	1
5	Upper left sidewall	3	1
6	Partition	3	1
7	Slide angle bar		2
8	Big angle bar		2
9	Screw 6.0x60 SPAX T-STAR plus (univers.)		2
10	Stud M6x25 ISO7380		3
11	Stud M6x40 ISO7380		1
12	Bolt M8*30 GOST7802		2
13	Bolt M8*55 GOST7802		2
14	Cap nut M8 DIN1587		2
15	Cap nut M6 DIN1587		4
16	Washer 8 GOST11371		2
17	Washer 10 GOST11371		4
18	Screw 6x50 GOST1145		4
19	Cap M8		4
20	Cup M8		4
21	Stud M8x30 DIN7991		4
22	Stud M8x40 DIN7991		2
23	Stud M10x35 DIN7991		2
24	Nut M8 GOST5915		4
25	Nut M8 DIN985		4

Picture 7.1 – Assembly scheme of slide 1,5m



For beam supports and other elements



for slides of the complex

A - shock-absorbing coating;

B – soil;

B – concrete;

Γ - depth of the shock absorbing coating;

Д - product level plane;

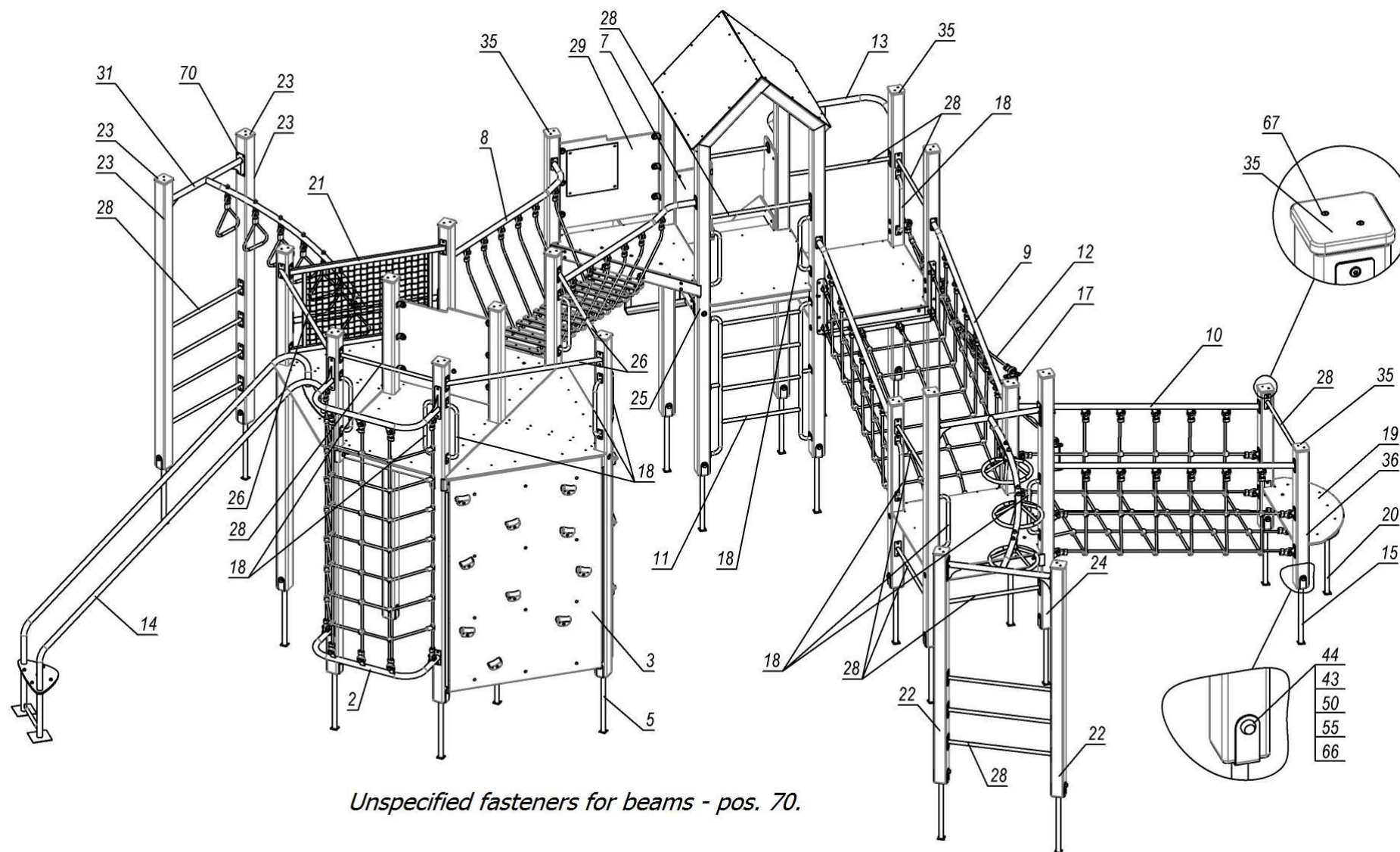
E – game surface.

Examples of impact-absorbing coatings

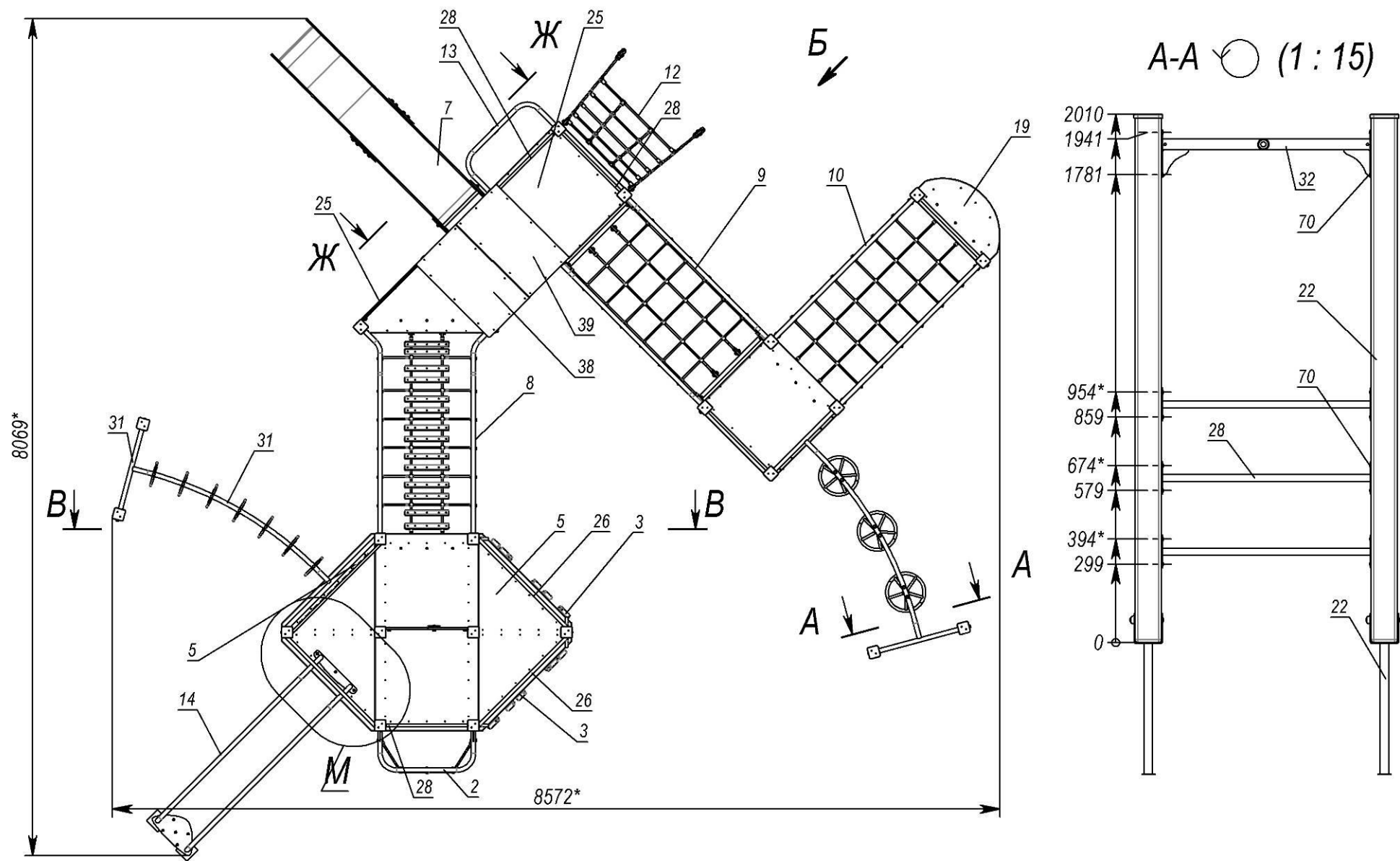
Material ¹	Description	Minimal depth, mm	Height of fall, mm
Turf			≤1000
Tree bark	grain size 20-80 mm	200	≤2000
		300	≤3000
Sawdust	grain size 5-30 mm	200	≤2000
		300	≤3000
Sand ²	grain size 0,2-2 mm	200	≤2000
		300	≤3000
Gravel ²	grain size 2-8 mm	200	≤2000
		300	≤3000
Another material	HIC tested according to EN1177	According to the test	According to the test
1. Materials specially prepared for playgrounds. 2. There should not be any clay inclusions. The grain size is obtained by sieving through a sieve as in EN933-1.			

Picture 8 – Concreting scheme

Appendix



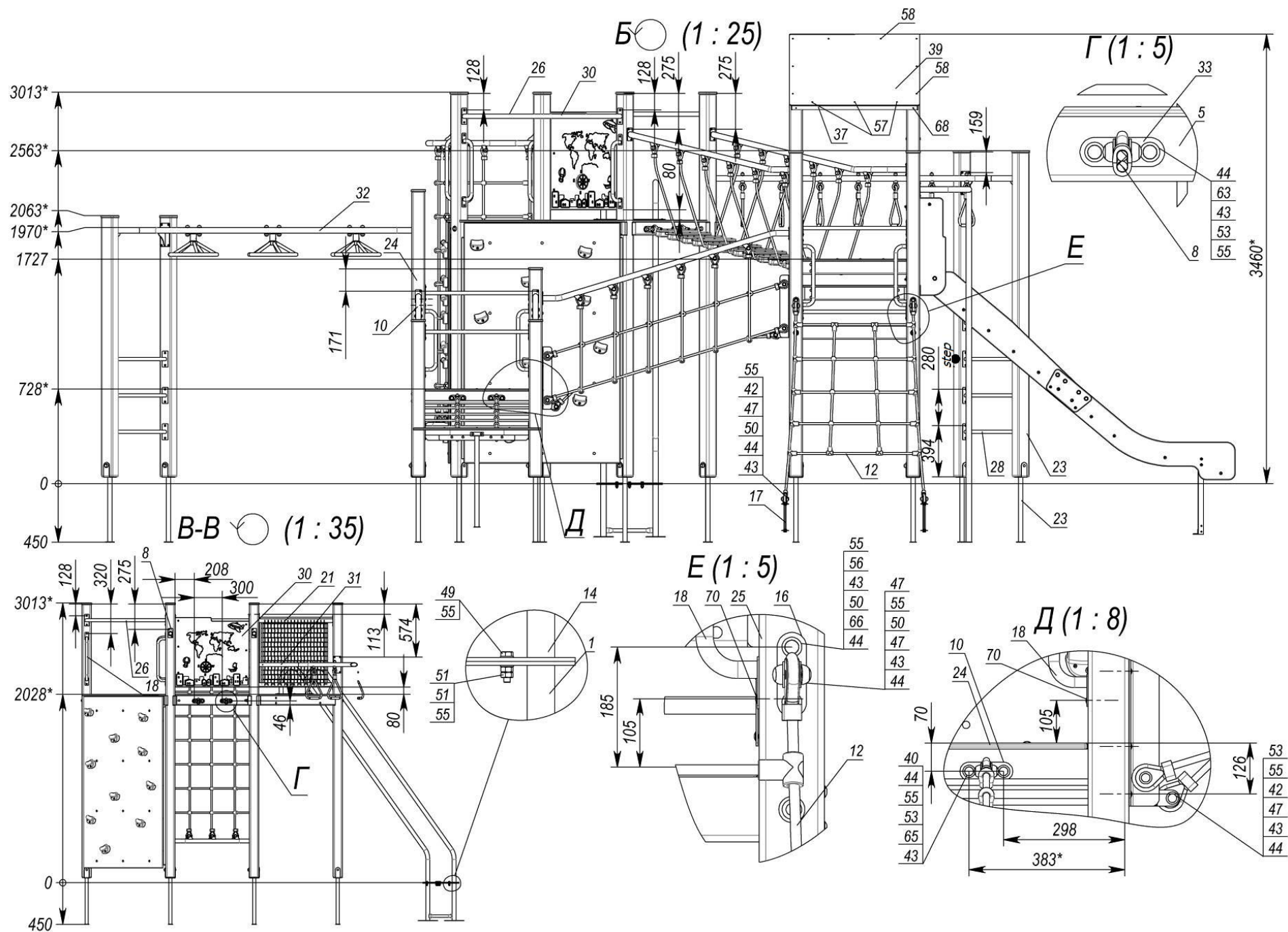
Picture 9



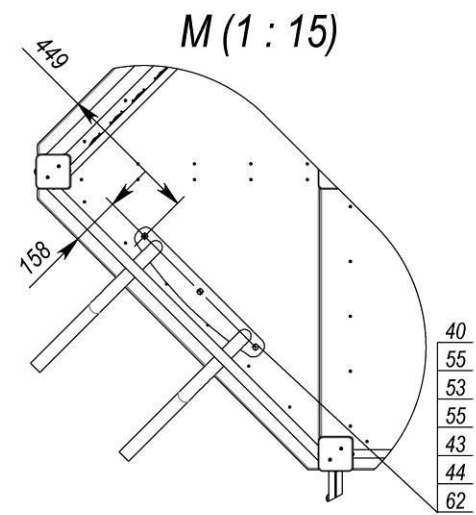
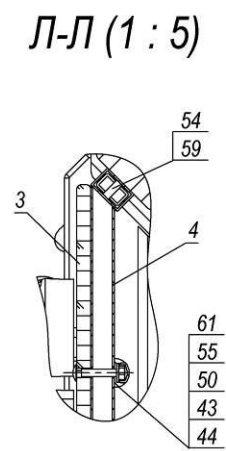
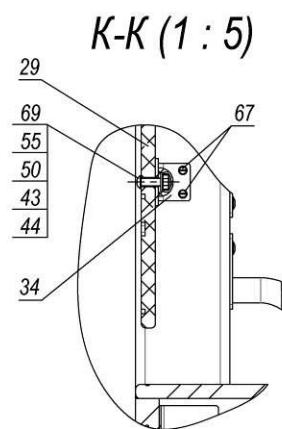
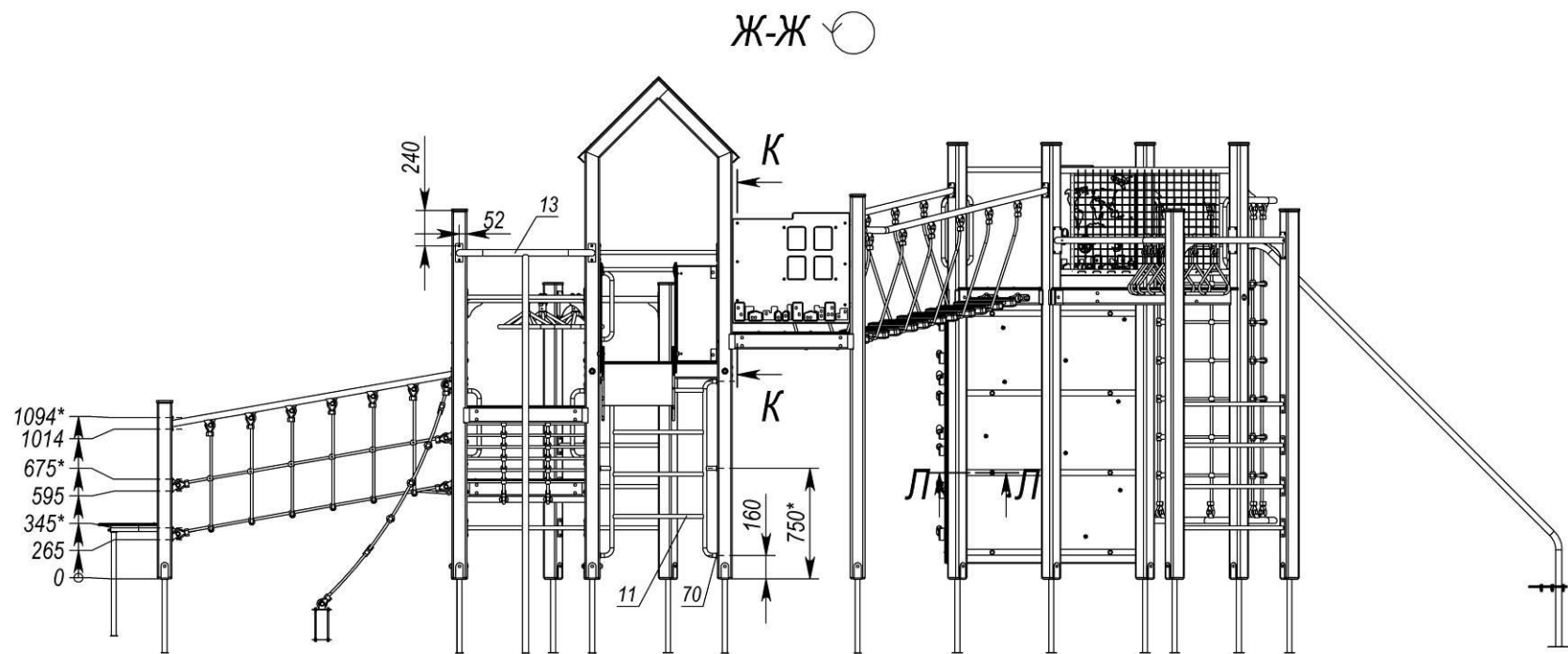
Picture 10

Pos.	Name	Weight, kg	Q-ty	Pos.	Name	Weight, kg	Q-ty
1	Support	8	1	36	Beam 1200mm	7	2
2	Vertical rope mesh	20	1	37	Bar 970 mm		2
3	Climber's board 2m	29	2	38	Roof slope (775x1000)	5	1
4	Climber's frame	15	2	39	Roof slope (775x1000)	5	1
5	Big tower hexagonal 2m	243	1	40	Fastening flange 580mm	2	5
6	Roof	19	1	41	Plug 40x25		8
7	Slide 1.5m assembly	60	1	42	Tube d12x1.5 GOST10704, L=22mm		20
8	Rope corner bridge 0.95x1.9	32	1	43	Cap M8		117
9	Rope bridge drop 0.5m	26	1	44	Cup M8		117
10	Rope bridge 0.9x1.9	29	1	45	Bolt M8*25 GOST7798		4
11	Metal ladder 1.5m	8	1	46	Bolt M8*40 GOST7798		8
12	Rope ladder 1.2m	5	1	47	Bolt M8*45 GOST7798		12
13	Pole 1.2m	12	1	48	Bolt M8*55 GOST7798		2
14	Rail descent 2m	26	1	49	Bolt M10*40 GOST7798		5
15	Beam support	2	2	50	Nut M8 GOST5915		56
16	Rope bracket		2	51	Nut M10 GOST5915		10
17	Rope embedded element		2	52	Cap nut M8 DIN1587		2
18	Handle		14	53	Nut M8 DIN985		41
19	Ladder 0.9m	11	1	54	Washer 8 GOST11371		26
20	Ladder support	2	1	55	Washer 10 GOST11371		127
21	Fence-mesh corner	10	1	56	Washer 12 GOST6958		4
22	Beam assembly	14	2	57	Screw 4x30 GOST1144		6
23	Beam 2.5m assembly	17	2	58	Screw 4x40 GOST1144		16
24	Tower 0.7m (beam 1.6-2.2m)	70	1	59	Screw 8x70 GOST11473		20
25	Triple corner tower (1.7-1.5-1.2m)	178	1	60	Bolt M8*30 GOST7802		12
26	Corner brace rod 1.2m	3	3	61	Bolt M8*50 GOST7802		24
27	Bridge fastening frame	6	2	62	Bolt M8*35 GOST7802		3
28	Brace rod 0.8m	1	15	63	Bolt M8*45 GOST7802		4
29	Panel with windows		1	64	Bolt M8*55 GOST7802		4
30	Panel "World map" 0.75m assembly		1	65	Bolt M8*60 GOST7802		8
31	Hand monkey bar	19	1	66	Bolt M8*120 GOST7802		6
32	Monkey bar with plates	26	1	67	Screw 4x40 GOST1145		58
33	Bracket for thimble		4	68	Screw 4x60 GOST1145		4
34	Corner bracket 40x60		12	69	Stud M8x30 ISO7380		12
35	Cap on bar		17	70	Screw 6.0x60 SPAX T-STAR plus (univers.)		218

Picture 11



Picture 12



Picture 13