

interatletika™

PRODUCTION AND SALE OF CHILDREN'S AND
OUTDOOR EQUIPMENT

Customer support:

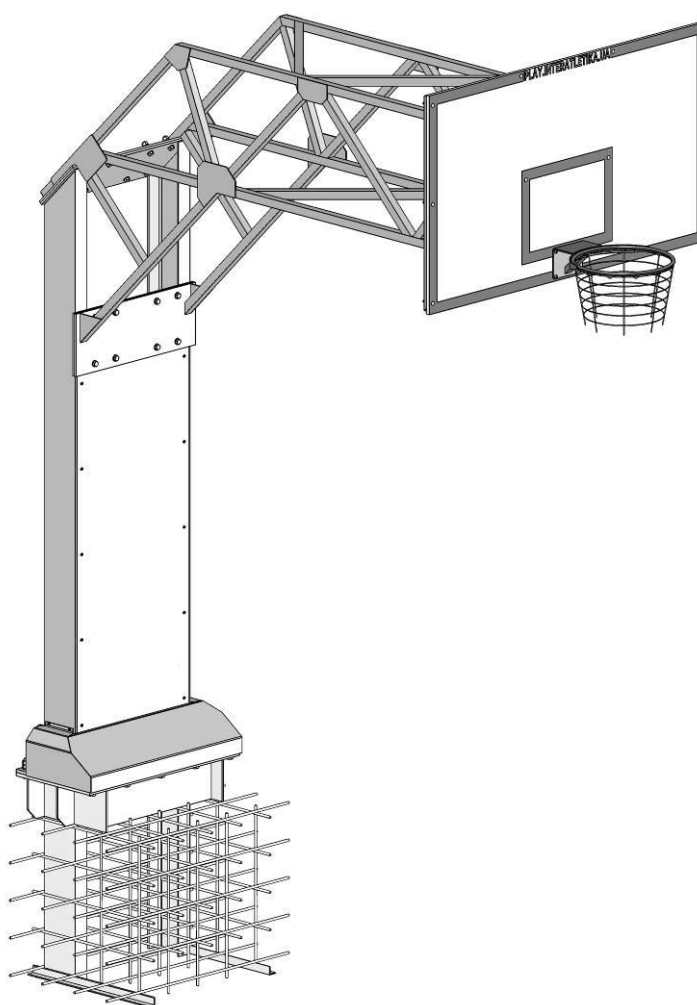
☎ +38 095 273 81 53

play.interatletika.com

✉ export.team@interatletika.com

DATA SHEET

UT407.1, UT407.2, UT407.3 – Basketball stand



CONTENT

1	GENERAL INFORMATION	3
2	TECHNICAL DATA AND COMPLETE SET	3
3	INFORMATION FOR SAFE USE	5
4	TECHNICAL MAINTENANCE	9
5	INFORMATION ON STORAGE, TRANSPORT AND DISPOSAL	9

FOR NOTES

This image shows a single sheet of white paper with horizontal ruling lines. The lines are evenly spaced and run across the width of the page. There are no margins, text, or other markings on the paper.

1. GENERAL INFORMATION

The purpose and content of this document. This document is a data sheet for sport and playing product for children's use (code of the document GOST 2.601-95) and contains a general description of the product and its maintenance, also information on safe use, technical maintenance, transport and disposal.

The level of proficiency of the user. To use the product each of the adult user should:

- Become acquainted with this document in details;
- Rigidly adhere to the requirements of this document.

Children should use the product under adult control.

This product has the same "unsafe" level as the others. This is the reason the Manufacturer (Deliverer) bears no responsibility by injuries.

Reproduction of this document and product modification. The manufacturer can make changes to the product design to improve its performance, change the design, etc. This document may not contain a description of such changes, but applies to the following modified products.

2. TECHNICAL DATA AND COMPLETE SET

The purpose of the product. The name of the product, its usage is mentioned at the front page. The product is aimed for children's use to play outdoors. By usage of this product the manufacturer means the usage the product outdoors by the number of users in accordance with the seats available.

The characteristics of the product.

	UT407.1	UT407.2	UT407.3
Length	3708	3051	3716
Width	1800	1220	1800
Height (over ground-level)	3940	3863	3940
Weight	560	520	557

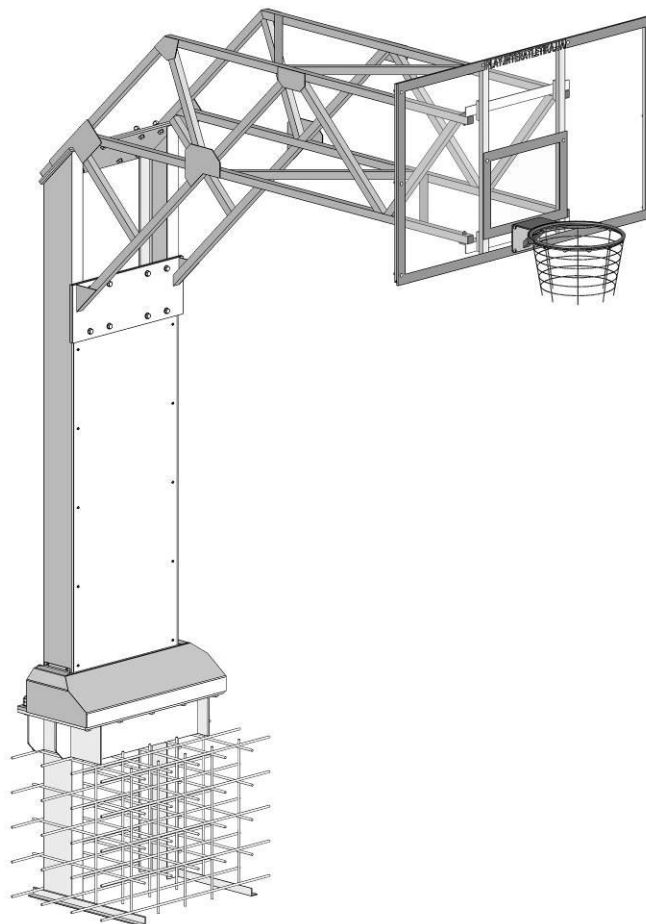
Working environment

: **outdoors**

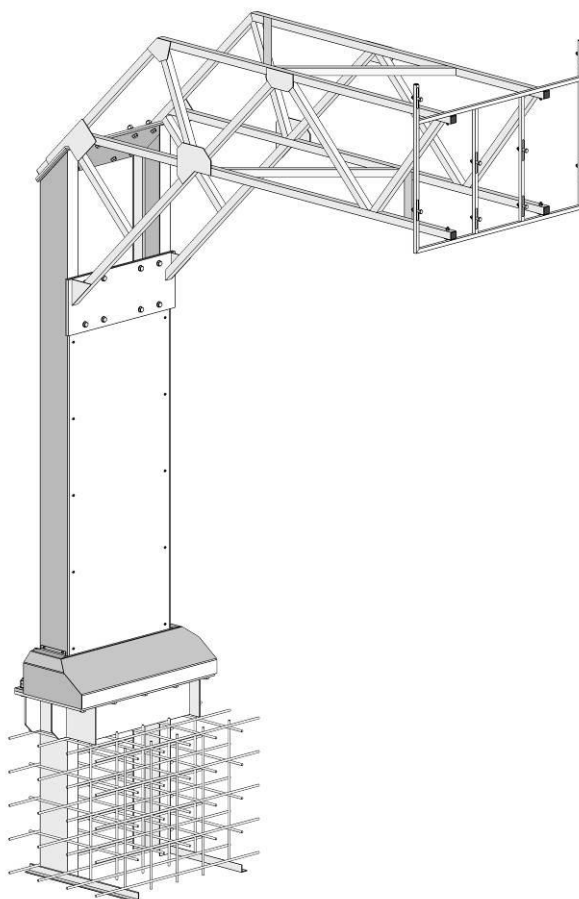
The country of manufacturer

: **Ukraine**

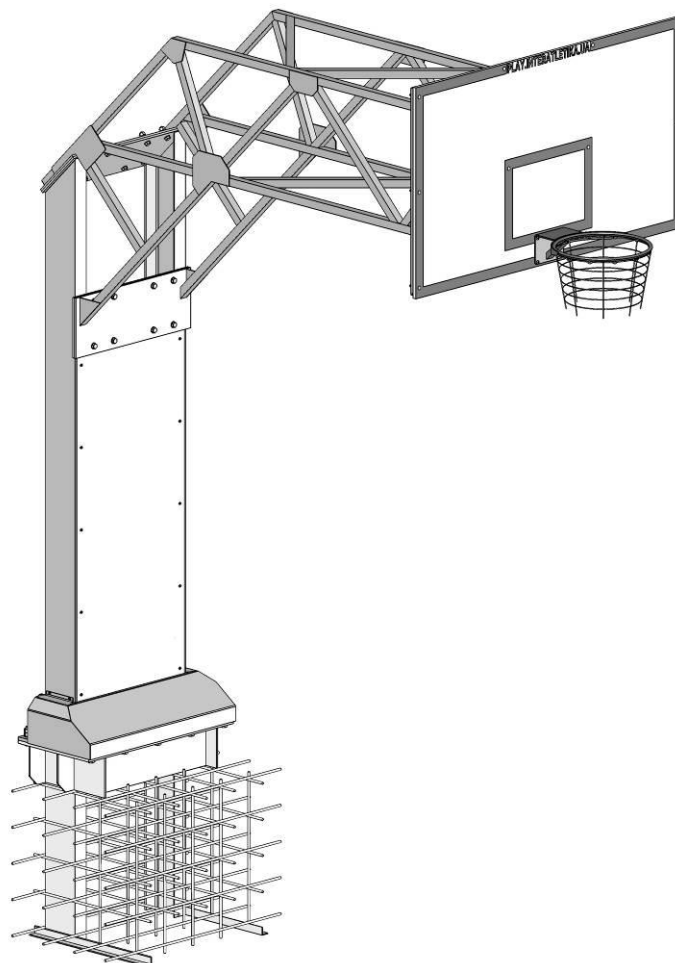
UT407.1



UT407.2



UT407.3



Technical data and complete set. Basketball stand is presented as a metal construction for installing a basketball shield on it and is intended for leisure activity.

Instruments and tools. No instrument needed for assembling and installation of the product is a part of a set.

Packaging. The product is transported in polyethylene packaging. Additionally, it can be packed in carton packing. No seals are presented at the packaging

3. INSTRUCTION FOR SAFE USE

Working limits. The product should be used as per its direct purpose.

Product preparation for usage. The product should be installed taking into account all the requirements in accordance with this document and other documents needed for installation (in case such documents are the part of a set). The general view of the product is presented at picture 1.

Product assembly and installation procedure. The product is transported assembled. Assembly and installation scheme is presented at picture 2.

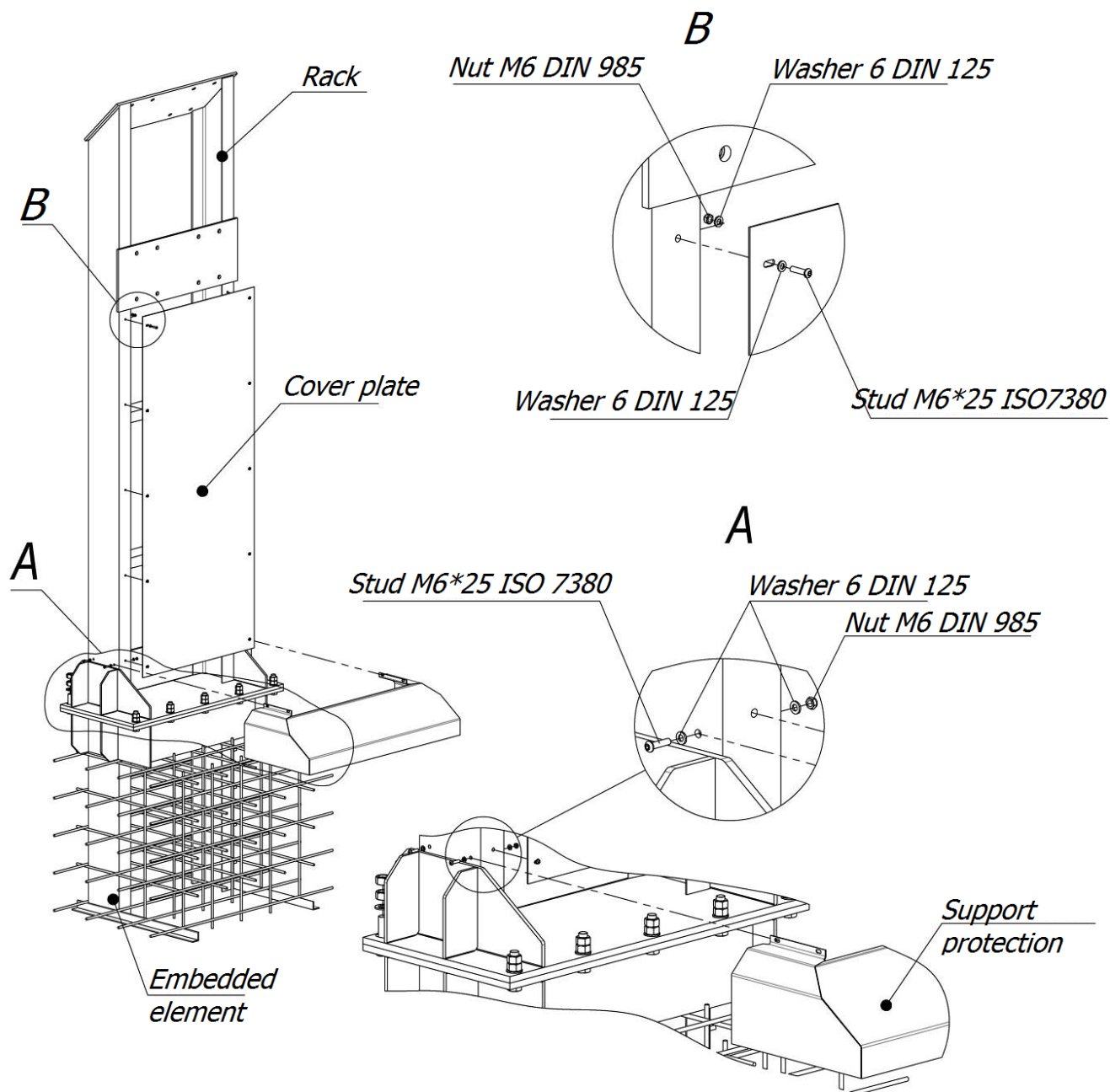
Instructions:

- 1) Dig a hole in the ground to install the rack, taking into account that shield square should be placed over the 'throw in' line of playground (the sizes of the bore are mentioned at picture 2).
- 2) Install the foundation into the bore.
- 3) Flatten the bore putting rubble inside or making the bore deeper.
- 4) Install the foundations using the lever in two places and fill the hole with concrete of B15 brand of a small fraction (as it is shown at picture 2).
- 5) The foundation can be used in two weeks (after the concrete is fully fixed), undo the upper nuts and take off the washers, install rack, posts backbone and cover plate in the foundation (in accordance with picture 2).
- 6) Damaging the thread of the studs M20x60 and M16x60 (that are seen out of the metal instrument) is recommended to avoid demolition works by strangers.

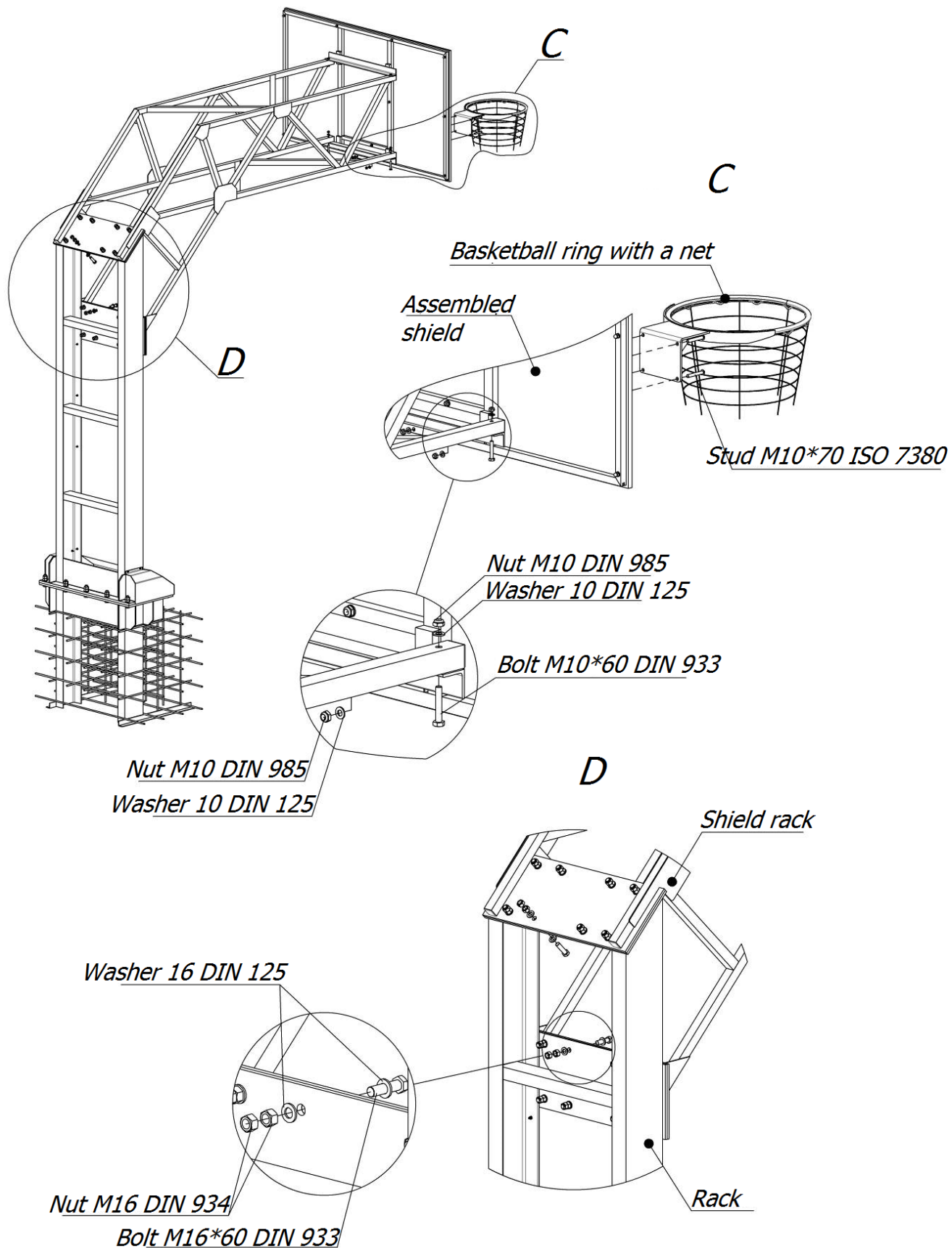
WARNING! QUANTITY, BRAND AND THE TERMS OF CONCRETE FIXING NORMS VIOLATION LEADS TO WRONG PRODUCT INSTALLATION AND ITS OPERATING AS A RESULT OF IT. RESPONSIBILITY FOR KEEPING TO INSTALLATION NORMS OF THE PRODUCT IS LAID ON THE CUSTOMER.

Assembly scheme UT407.1

Assembly scheme is identical for all stands. (Additional assembly scheme is in Appendix)

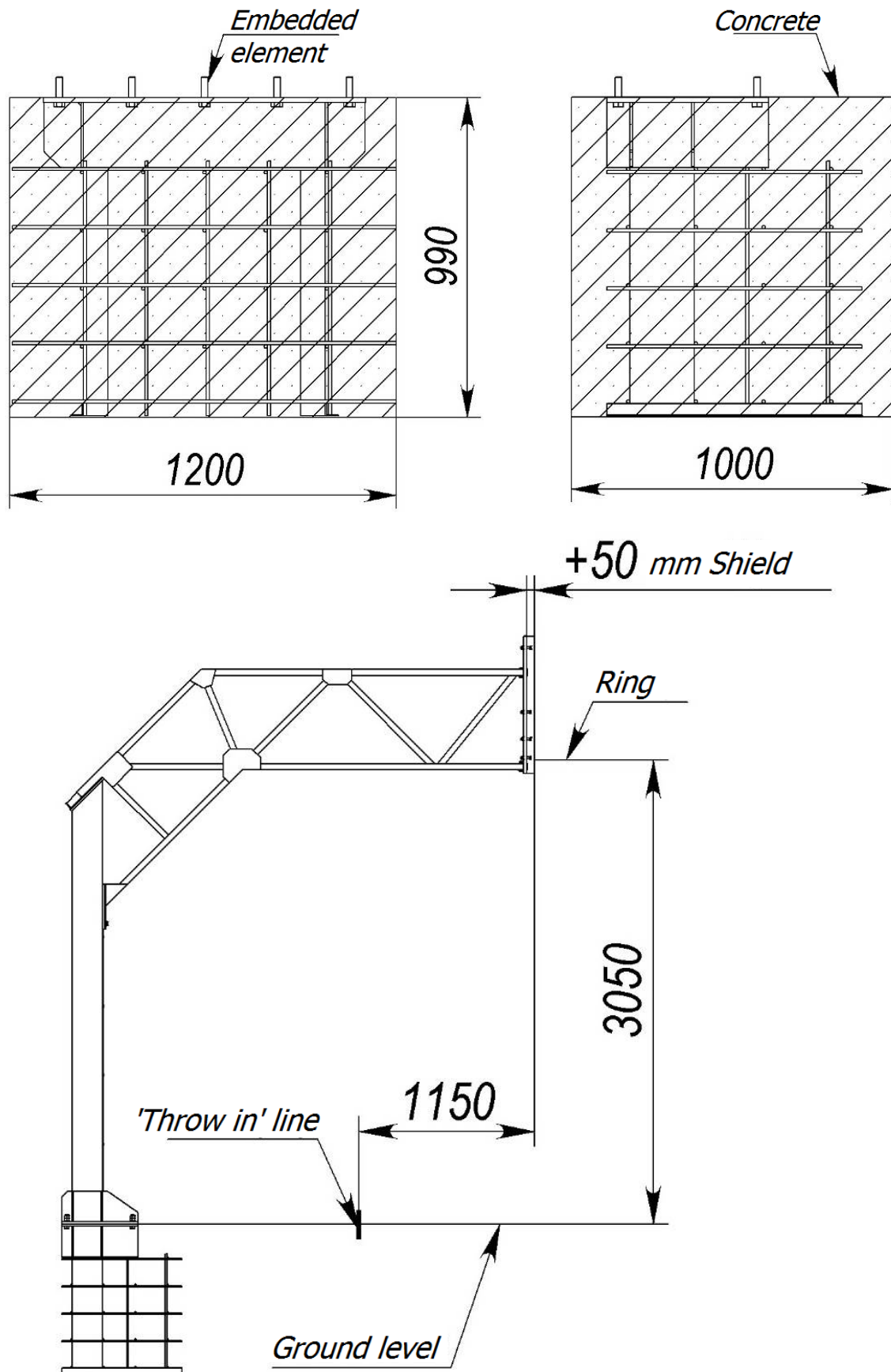


Picture 1 – Install scheme of the embedded element with a rack



Picture 2 – Assembly scheme of the rack with a shield

Foundation scheme



Picture 3

4. TECHNICAL MAINTENANCE

Technical maintenance presumes, first of all, the responsibility of the user to stick to all recommendations, that are mentioned in this document, beginning with every-day observation of the product and its technical order.

Before operating the product, conduct a visual inspection, check the fasteners and structural strength – in case of any damages, full or partial down state the product is forbidden to be used.

5. INFORMATION ON STORAGE, TRANSPORT AND DISPOSAL

Product storage and disposal orders. *WARNING!* The product is aimed to regular using according to its purpose (taking into account all the limits, that are mentioned in this document) after its installation. It is not recommended to leave the product without using (more than 30 calendar days). External (physical) factors can lead to losing the shop-front of the product (or its parts), wrong working on the product or its parts during a long-time down time, and as a result it might lead to breakage of the product.

If long-term storage of the product is required, the following storage rules must be observed (the list of conditions is not complete):

- place the product in a closed dry room with natural ventilation;
- protect the product from external factors (dust, water drops, etc.) with a large plastic bag, leaving space for free air circulation;
- take other measures to preserve the appearance and characteristics of the product during storage.

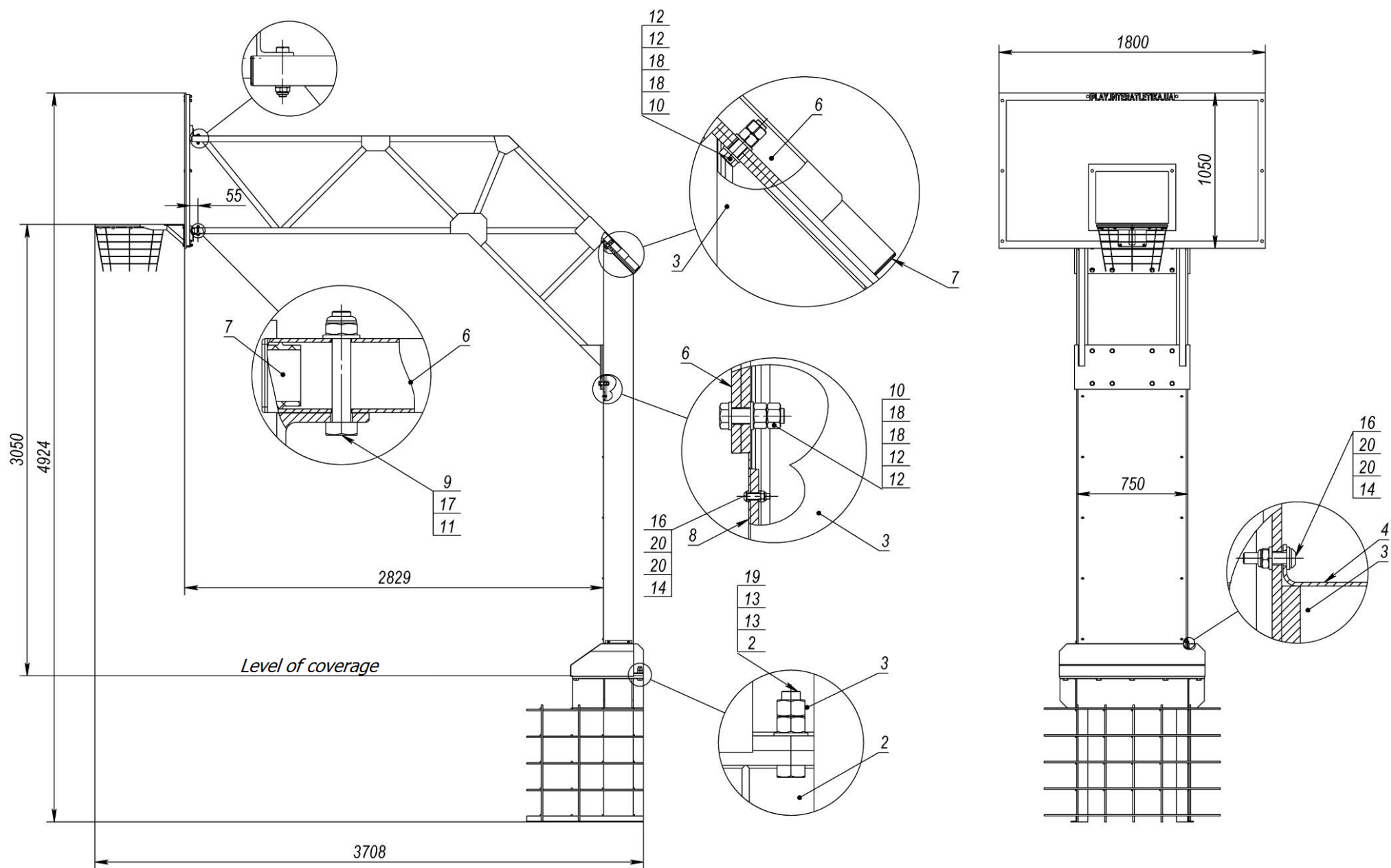
When removing the product from storage and preparing for installation, follow the next recommendations:

- remove the product from the packaging material (polyethylene, cardboard, other packaging materials);
- remove dust and other contaminants from the surface of the product;
- check completeness and absence of parts damage.

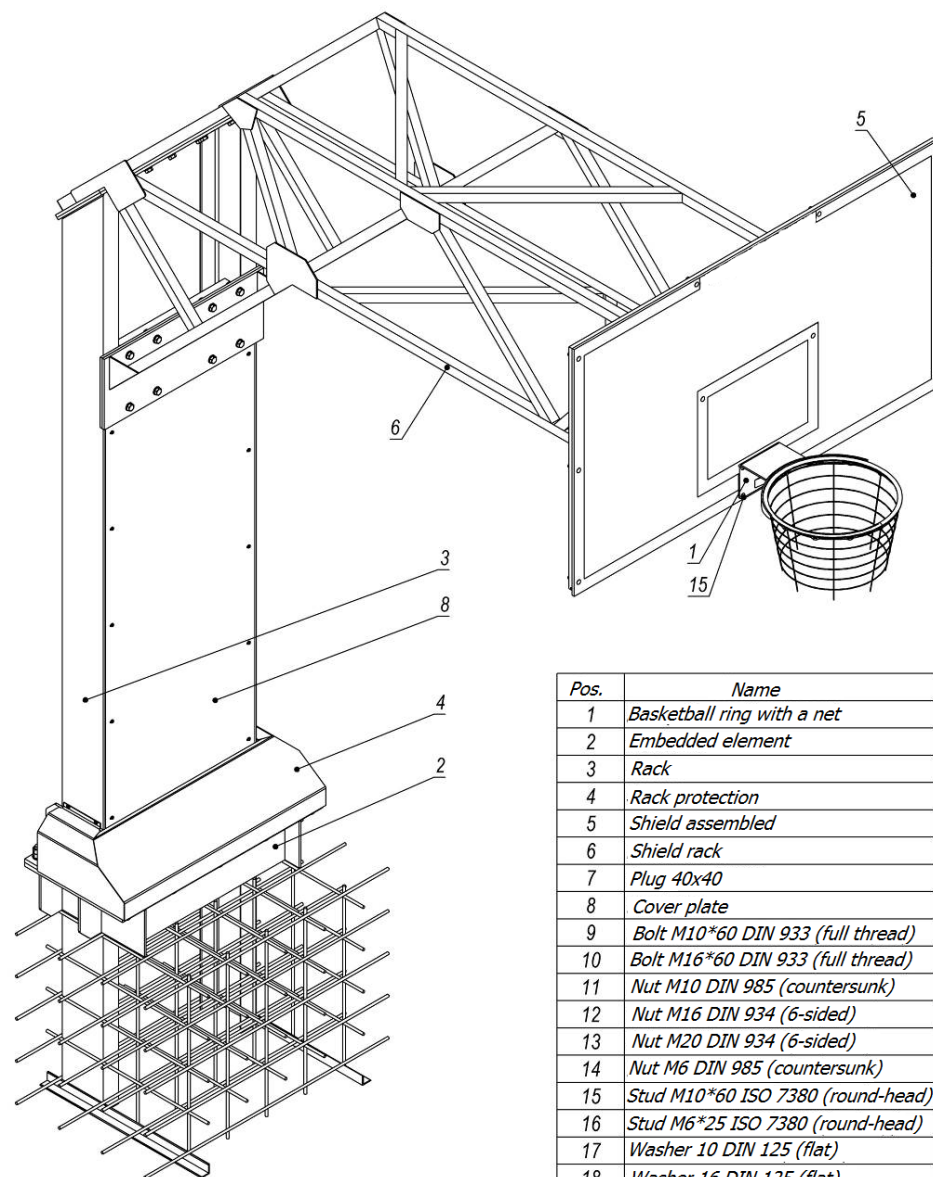
The product is transported unassembled in carton packing. Transporting should be accomplished by the way of protecting the product from external factors (rain, snow, sun-rays, water, moisture, etc.)

After the term of product use is over the Customer determine its further usage by themselves.

Appendix

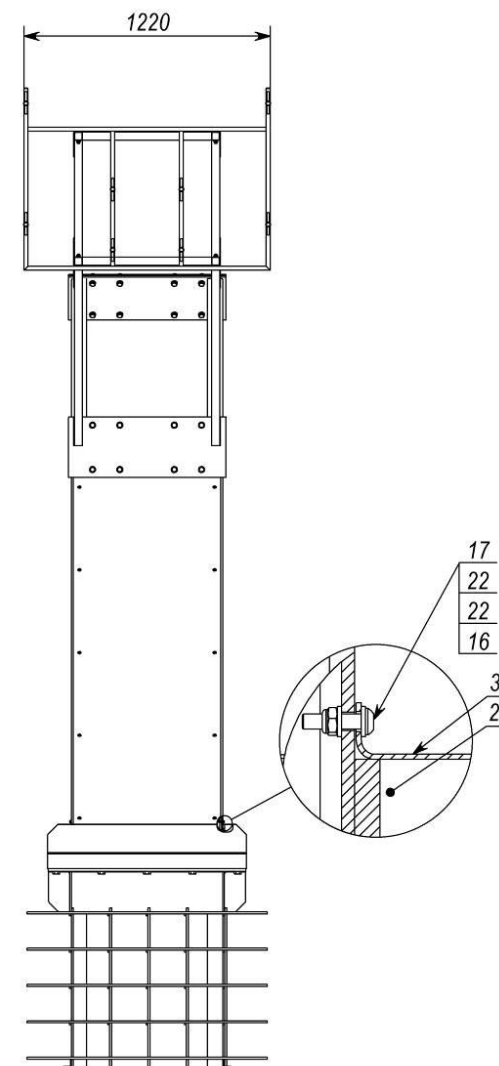
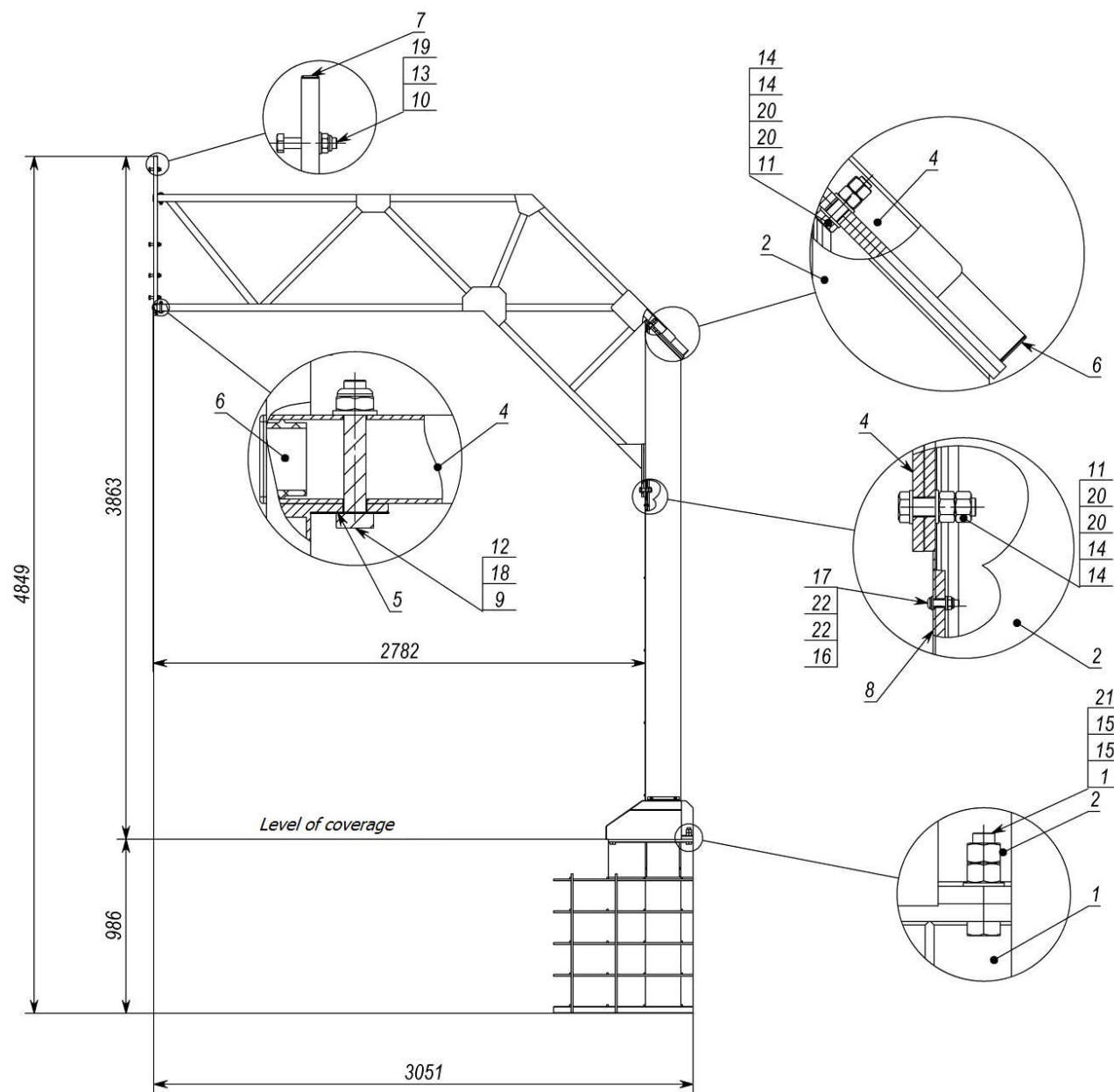


Picture 4 – UT407.1

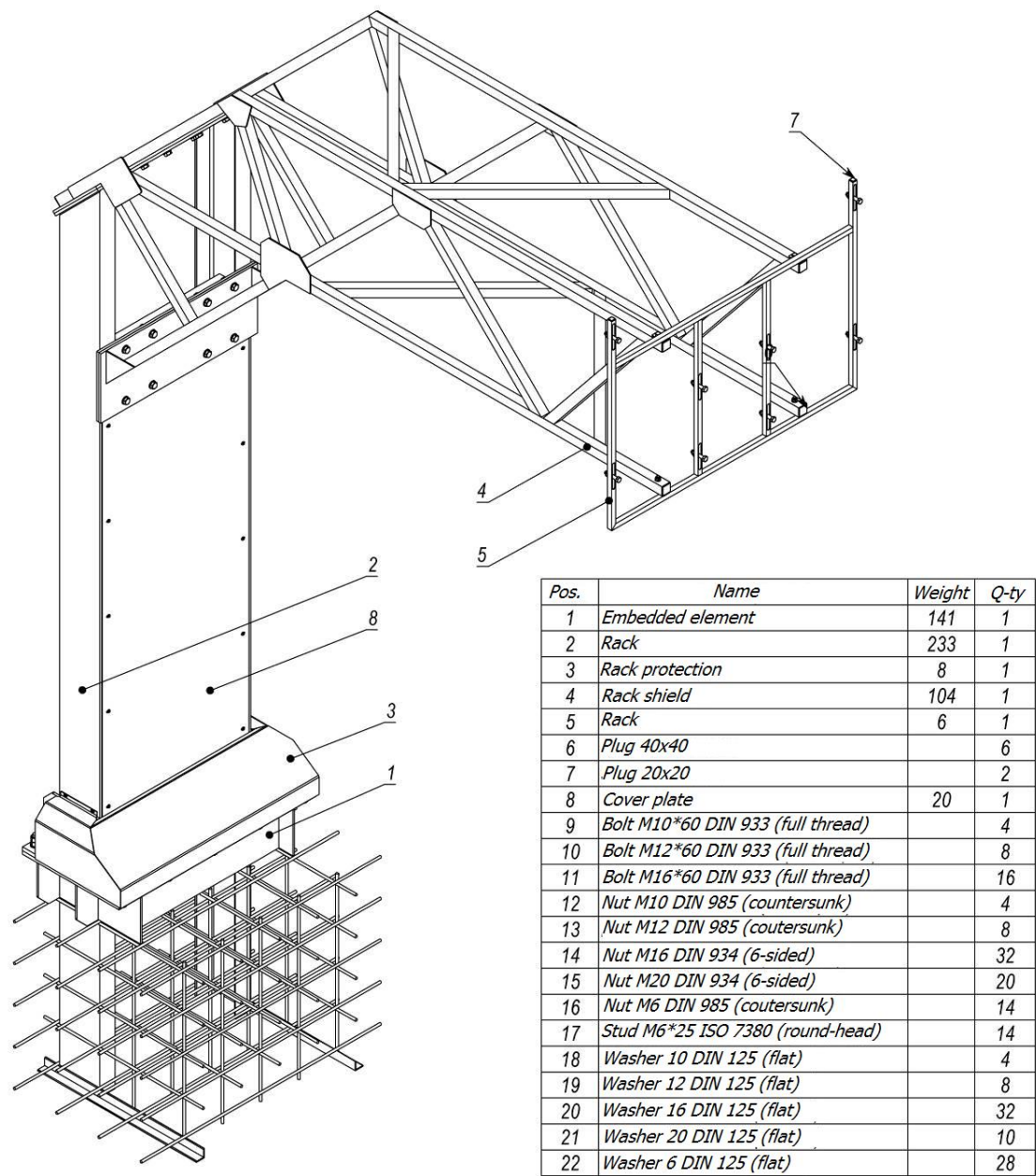


Pos.	Name	Weight	Q-ty
1	Basketball ring with a net	6	1
2	Embedded element	141	1
3	Rack	233	1
4	Rack protection	8	1
5	Shield assembled	41	1
6	Shield rack	104	1
7	Plug 40x40		6
8	Cover plate	20	1
9	Bolt M10*60 DIN 933 (full thread)		4
10	Bolt M16*60 DIN 933 (full thread)		16
11	Nut M10 DIN 985 (countersunk)		8
12	Nut M16 DIN 934 (6-sided)		32
13	Nut M20 DIN 934 (6-sided)		20
14	Nut M6 DIN 985 (countersunk)		14
15	Stud M10*60 ISO 7380 (round-head)		4
16	Stud M6*25 ISO 7380 (round-head)		14
17	Washer 10 DIN 125 (flat)		8
18	Washer 16 DIN 125 (flat)		32
19	Washer 20 DIN 125 (flat)		10
20	Washer 6 DIN 125 (flat)		28

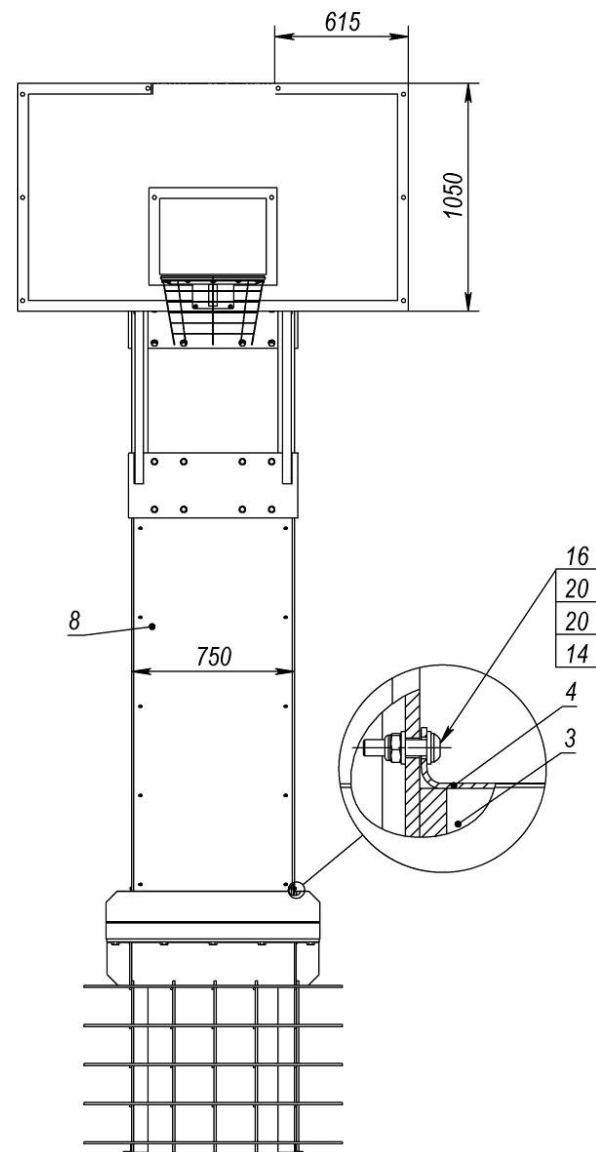
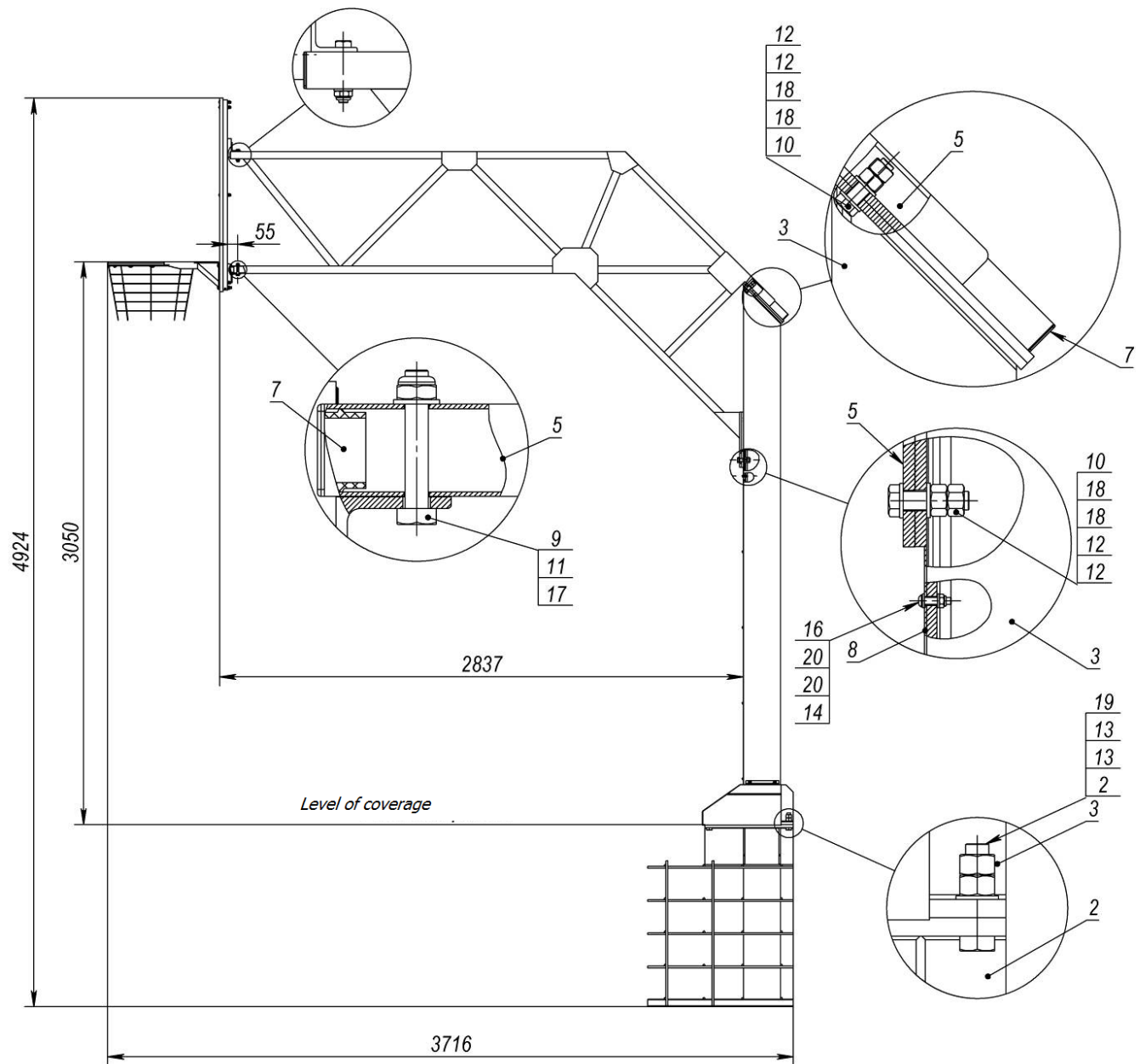
Picture 5 – UT407.1



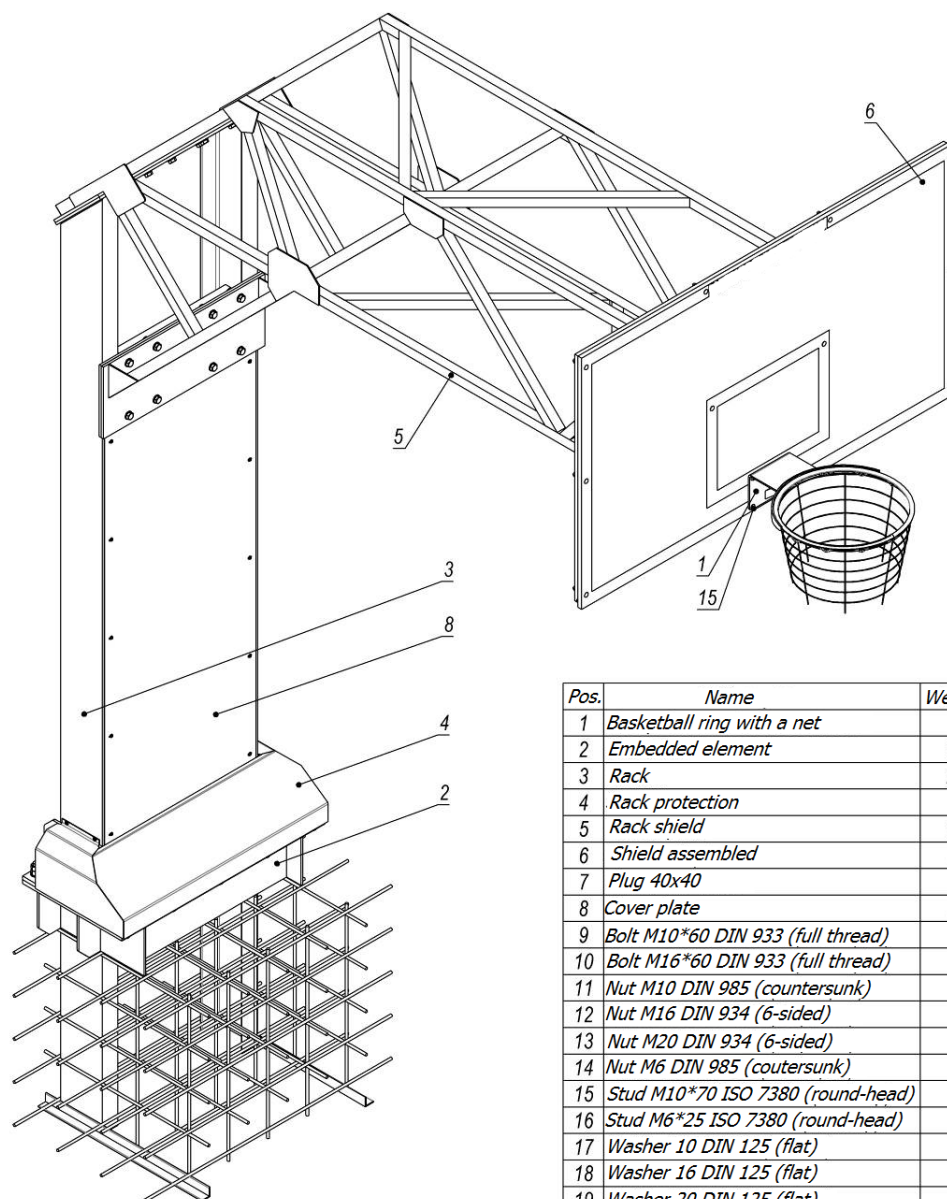
Picture 6 – UT407.2



Picture 7 – UT407.2



Picture 8 – UT407.3



Pos.	Name	Weight	Q-ty
1	Basketball ring with a net	6	1
2	Embedded element	141	1
3	Rack	233	1
4	Rack protection	8	1
5	Rack shield	104	1
6	Shield assembled	38	1
7	Plug 40x40		6
8	Cover plate	20	1
9	Bolt M10*60 DIN 933 (full thread)		4
10	Bolt M16*60 DIN 933 (full thread)		16
11	Nut M10 DIN 985 (countersunk)		8
12	Nut M16 DIN 934 (6-sided)		32
13	Nut M20 DIN 934 (6-sided)		20
14	Nut M6 DIN 985 (countersunk)		14
15	Stud M10*70 ISO 7380 (round-head)		4
16	Stud M6*25 ISO 7380 (round-head)		14
17	Washer 10 DIN 125 (flat)		8
18	Washer 16 DIN 125 (flat)		32
19	Washer 20 DIN 125 (flat)		10
20	Washer 6 DIN 125 (flat)		28

Picture 9 – UT407.3