

# interatletika™

PRODUCTION AND SALE OF SPORTS GOODS

Customer support:

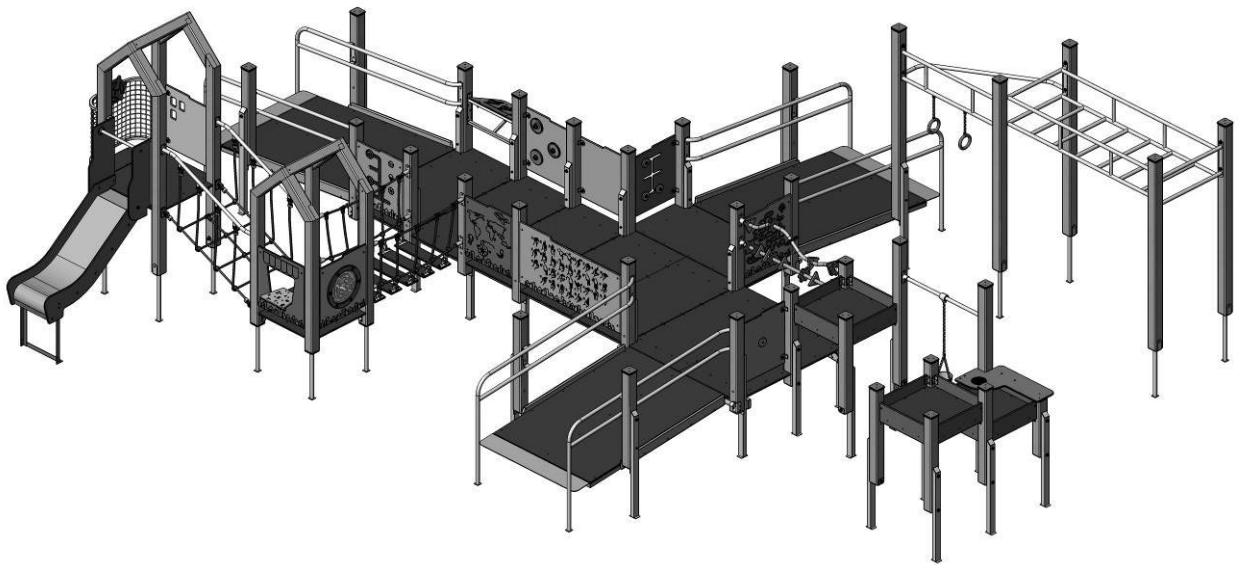
+38 095 273 81 53

[play.interatletika.com](http://play.interatletika.com)

## DATA SHEET

Playground complex "Hutor"

TE835-PE-Base



## CONTENT

1. GENERAL INFORMATION .....	Ошибка! Закладка не определена.
2. PRODUCT ASSEMBLY AND INSTALLATION PROCEDURE.....	Ошибка! Закладка не определена.
3. PRODUCT USE .....	Ошибка! Закладка не определена.
4. PRODUCT MAINTENANCE.....	3
5. STORAGE, TRANSPORT AND DISPOSAL INFORMATION .....	4
6. TECHNICAL CHARACTERISTICS AND ASSEMBLY SCHEMES.....	Ошибка! Закладка не определена.

## FOR NOTES

[illegible]

## 1. GENERAL INFORMATION

**Purpose and content of this document.** This document contains a general description, installation information, use of the product as intended, maintenance, routine repairs, and manufacturer's guarantees.

**Distribution of this document for product modifications.** The manufacturer can make changes to the design of the product aimed at improving its characteristics, changing the design, etc. This document may not contain a description of such changes, but it applies to such modified products.

## 2. INFORMATION ON STORAGE, TRANSPORTATION AND DISPOSAL

**Tools and accessories.** The product kit does not include the tool required for installation.

**The order of assembly and installation of the product.**

- 1) 1) Mark the territory as indicated on the foundation layout diagram.
- 2) 2) Dig notches for installation of embedded parts and attachment elements. The depth of the grooves should be leveled by deepening them or filling them with crushed stone.
- 3) 3) Assemble and install the equipment in accordance with the assembly diagrams - chapter 7.
- 4) 4) Concrete embedded parts and support structures of attached elements. When installing the product on sandy soil, the overall dimensions of the grooves should be increased by 15-20%.

To avoid wood cracking, for screws with a diameter of more than 4 mm, holes with a diameter of 0.6..0.7 diameter should be drilled to a depth of 0.8 of its length.

**WARNING! The presence and participation of children during the installation of the product is not allowed.**

## 3. PRODUCT USE

It is forbidden to use the product until the work on its complete and final installation is completed.

The use of the product by users of a different age and weight category is prohibited.

Before using the product, it is necessary to clear the safety zone from unnecessary objects that may harm the user (garbage, tools left after assembly and installation, etc.).

It is forbidden to use the product in adverse weather conditions (icy, snowfall, rain, hail, strong wind, etc.), in which there is a possibility of injury to the user.

## 4. PRODUCT MAINTENANCE

You have purchased quality and reliable equipment. In the process of its production, the requirements of regulatory and technical documents of Ukraine, the CIS countries and the European Union, which regulate the production of children's play equipment, were taken into account. However, it should not be forgotten that certain rules and requirements must be observed when operating any technical product. Despite the fact that our product is of high quality and reliability, this rule applies to it in its entirety. You should be aware that the following rules and recommendations for product maintenance are aimed at ensuring that your child, the child of your friends or acquaintances is safe and that no unforeseen factors threaten their health or life.

Remember that the operation of the product is accompanied by the impact on it of various negative factors, the full list of which is impossible to predict. Among them, natural factors and factors caused by human influence on equipment occupy an important place. Usually, at first their action leads to violations of the appearance of the product. Thus, under the influence of factors caused by human exploitation, damage to the integrity of the paint coating of parts made of wood can occur in the form of burrs, chips, cuts, and when parts made of metal are affected, damage to the paint coating in the form of dents, chips, abrasions may occur etc. This leads to the appearance and development of defects, which can be the cause of the destruction of the product. Cases of using the product not for its intended purpose, exceeding permissible loads and acts of vandalism represent a special danger, because under the influence of these factors, irreversible changes may occur in the structure of the material from which the product is made, leading to destruction.

Maintenance of the product involves, first of all, the responsibility of the user to comply with all the recommendations provided for in this document, starting with a daily inspection of the external condition of the product before starting operation.

Daily inspection of the product is a very important procedure. With its help, you will be able to detect any changes in the appearance of the product in a timely manner (deformation of individual parts, deformation of the structure in general or its part, damage to parts, cracks in welding seams, as well as lack of fastening of product parts, etc.).

Before using the product, check its functionality, the absence of damage, dirt on the product, sharp edges, the reliability of fixing the structure, the absence of extra objects on the surface of the platform. In the presence of product breakdowns, its complete or partial inoperability and other identified defects, use is prohibited.

In the process of operation, it is also necessary to periodically inspect the condition of the product - a current inspection. It includes an external inspection of the product, a check of its operability (in the presence of moving elements - smooth movement of mechanisms, compliance with operating modes, etc.). The current inspection allows you to detect malfunctions caused by the operation of the equipment, climatic conditions, acts of vandalism and other factors, before they reach a critical value and destroy the product. The current inspection is carried out in order to identify foreign objects that may endanger the user and lead to malfunctions of the product. The periodicity of the current inspection is established by the owner, taking into account the operating conditions. If you do not have sufficient technical knowledge and skills to carry out such inspections, we recommend that you contact the authorized specialists of the manufacturing company for advice.

Every three months, a planned inspection should be carried out, which primarily concerns the foundation part,

load-bearing elements and elements' connection nodes (their integrity and degree of wear).

The main annual inspection by authorized specialists of the manufacturing company must be carried out annually. During the inspection, the compliance of the technical condition of the equipment with safety requirements is evaluated. The degree of wear and damage of wooden elements and their ability to withstand applied loads, damage, the presence of corrosion of metal elements and the influence of the specified factors on the safety of product operation are determined. Also, the inspection makes it possible to identify the impact of the repair work, if any, on the safety of the equipment.

## **5. STORAGE, TRANSPORT AND DISPOSAL INFORMATION**

The product is transported in the manufacturer's packaging by any means of transport that ensures its safety and protection from external factors (rain, snow, sunlight, water, high humidity, etc.).

### **Information about transportation**

Date		Brand, state number of the ca/trailer	Position, full name	Signature
Departure	Arrival			

Before installation, store the product in the original packaging in dry, closed rooms with natural air ventilation.

If it is necessary to transport the product to another location after use, it is recommended to use the manufacturer's packaging.

If long-term storage of the product is required, the following storage rules must be observed (the list of conditions is not complete):

- place the product in a closed dry room with natural ventilation;
  - protect the product from external factors (dust, water drops, etc.) with a large plastic bag, leaving space for free air circulation;
  - take other measures to preserve the appearance and characteristics of the product during storage.
- When removing the product from storage and preparing for installation, follow the next recommendations:
- remove the product from the packaging material (polyethylene, cardboard, other packaging materials);
  - remove dust and other contaminants from the surface of the product;
  - check completeness and absence of parts damage.

### **Storage information**

Date		Product storage conditions	Full name	Signature
Putting into storage	Removal from storage			

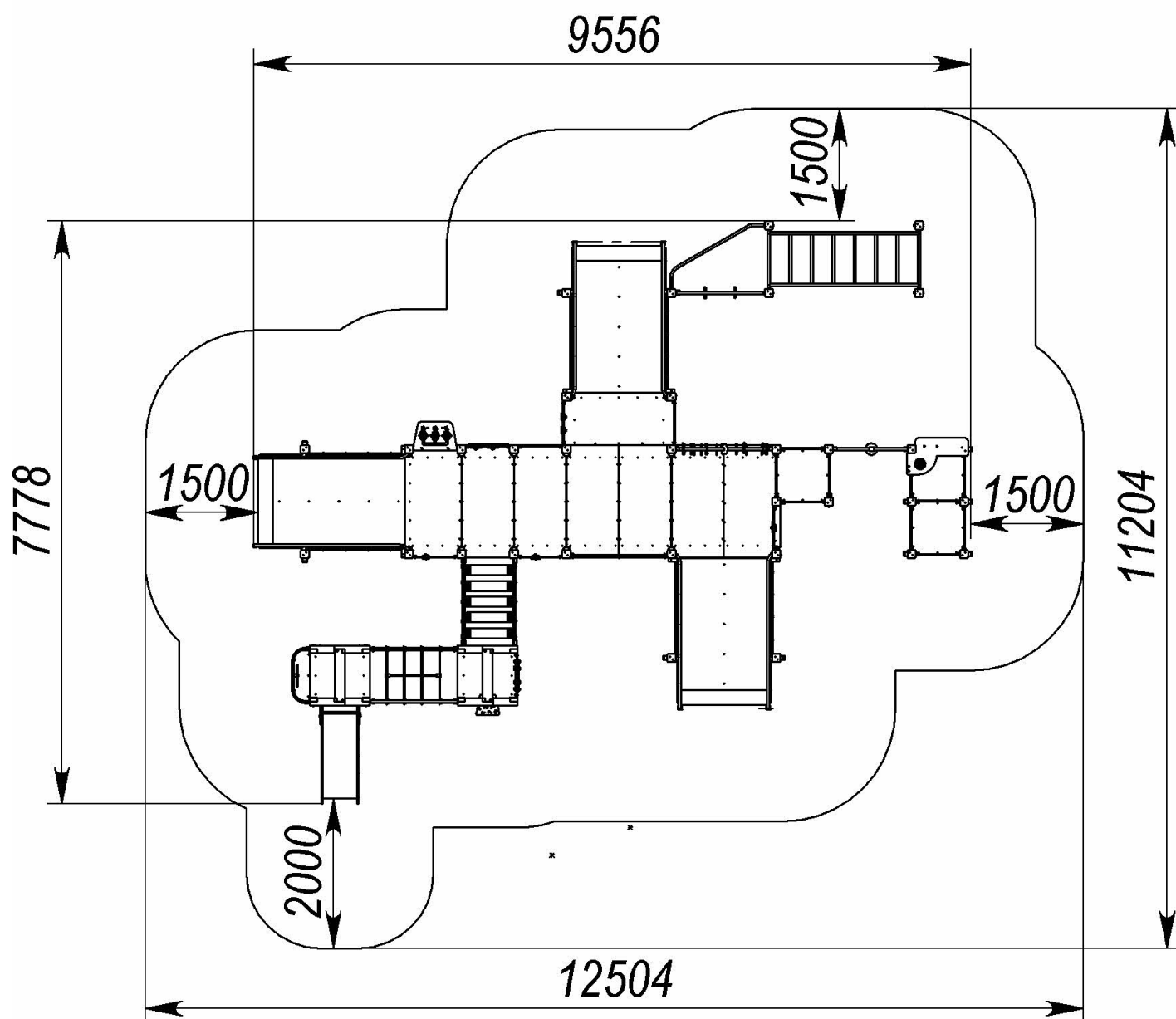
After the end of the equipment's service life, the buyer independently determines the procedure for its use. If you decide to recycle, contact the seller or specialized organizations.

The equipment does not contain harmful impurities and materials that can harm your health and is not subject to special recycling.

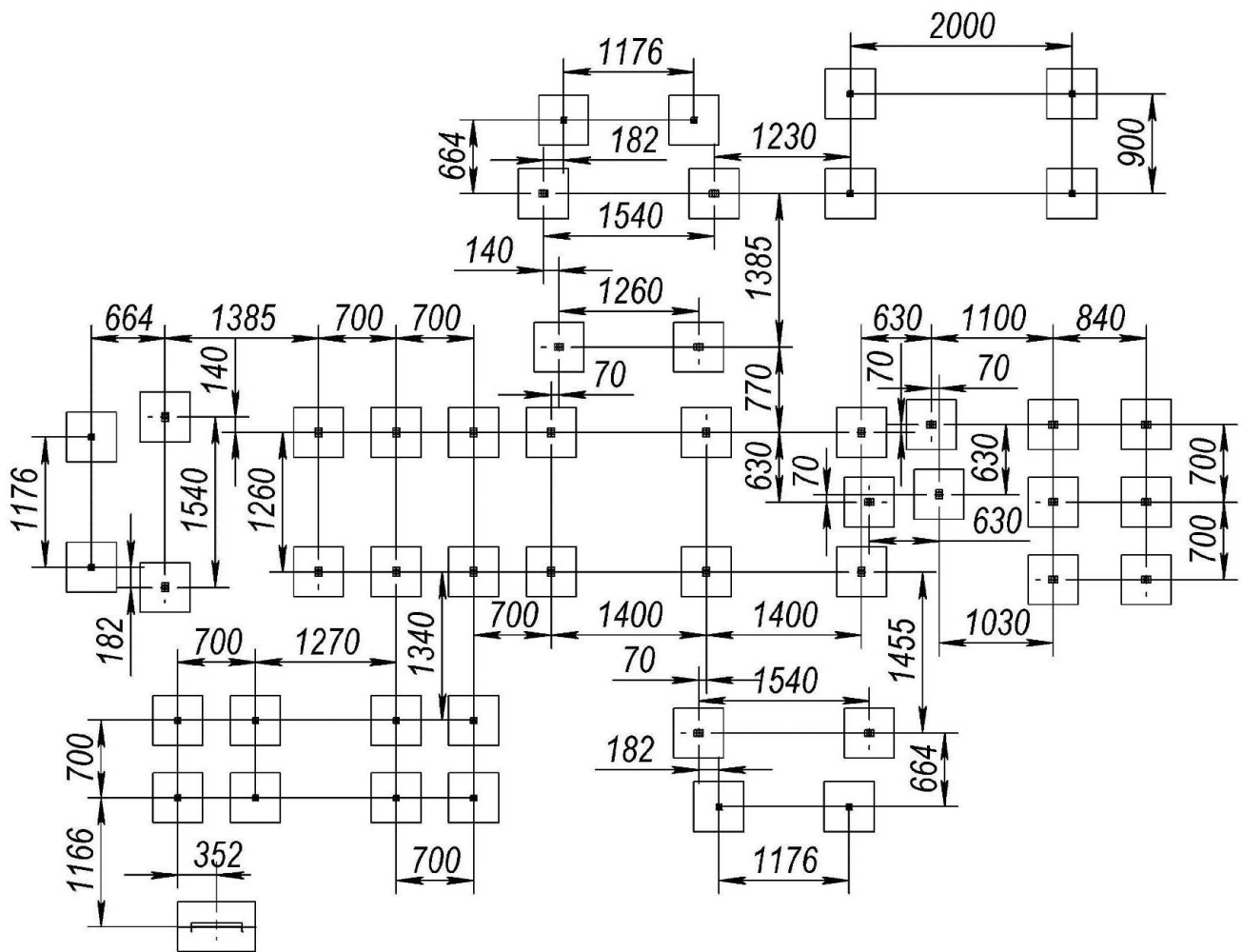


## 6. TECHNICAL CHARACTERISTICS AND ASSEMBLY SCHEMES

Length, mm	9556
Width, mm	7778
Height, mm	2350
Weight, kg	1324
Height of fall, mm	716
Age restrictions, years	Up to 12
Weight limits, kg	Up to 60

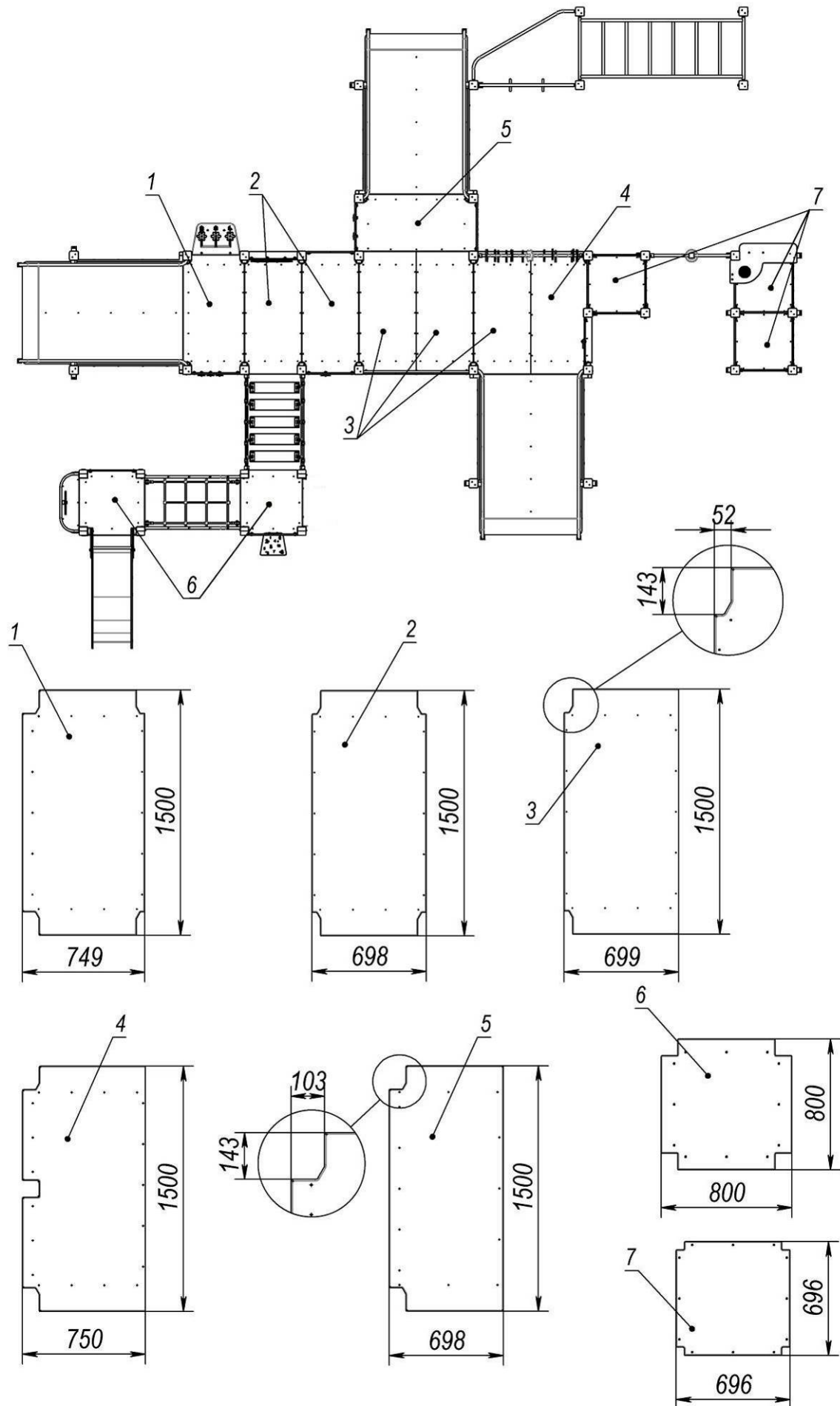


Picture 1 – Installation area and safety zone



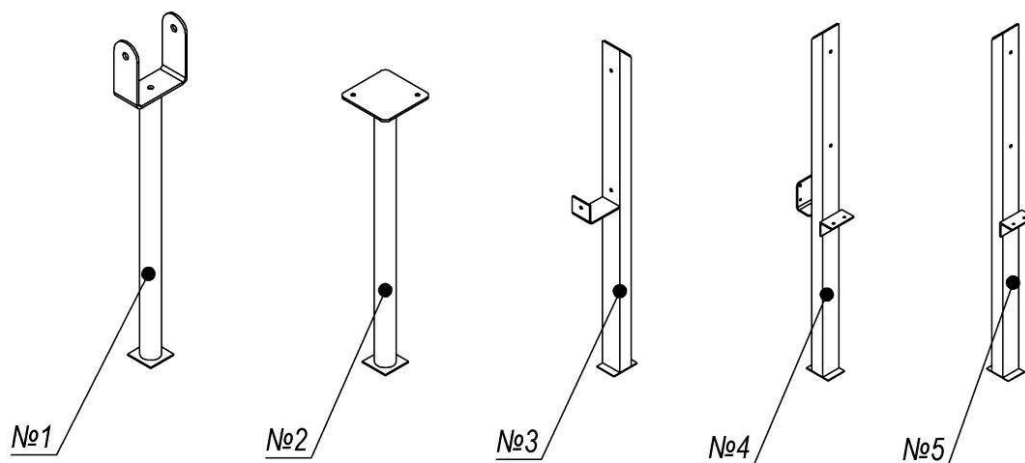
**Picture 2 – Layout of foundations**

## Beam layout scheme

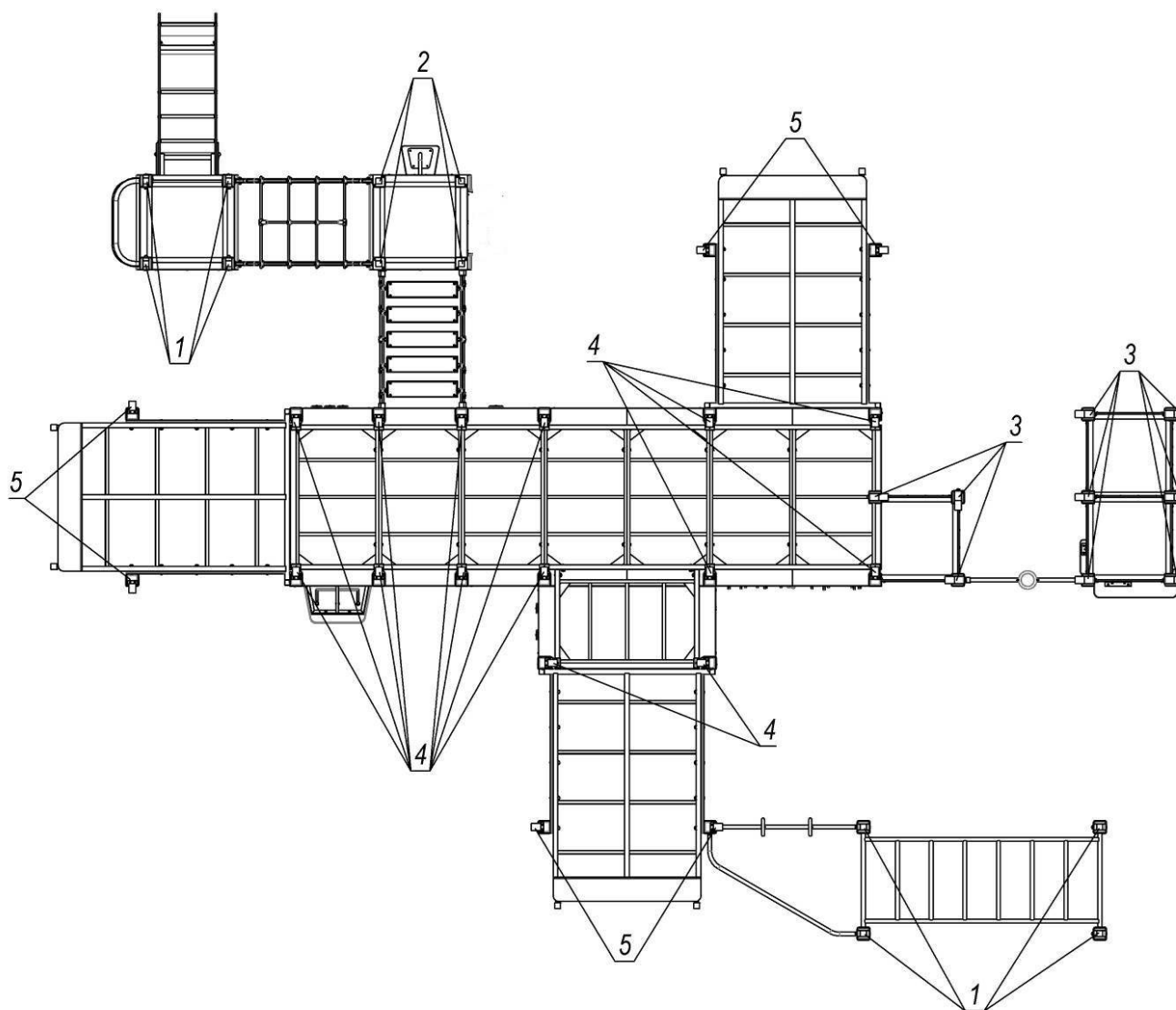


Picture 3

## Supports layout scheme

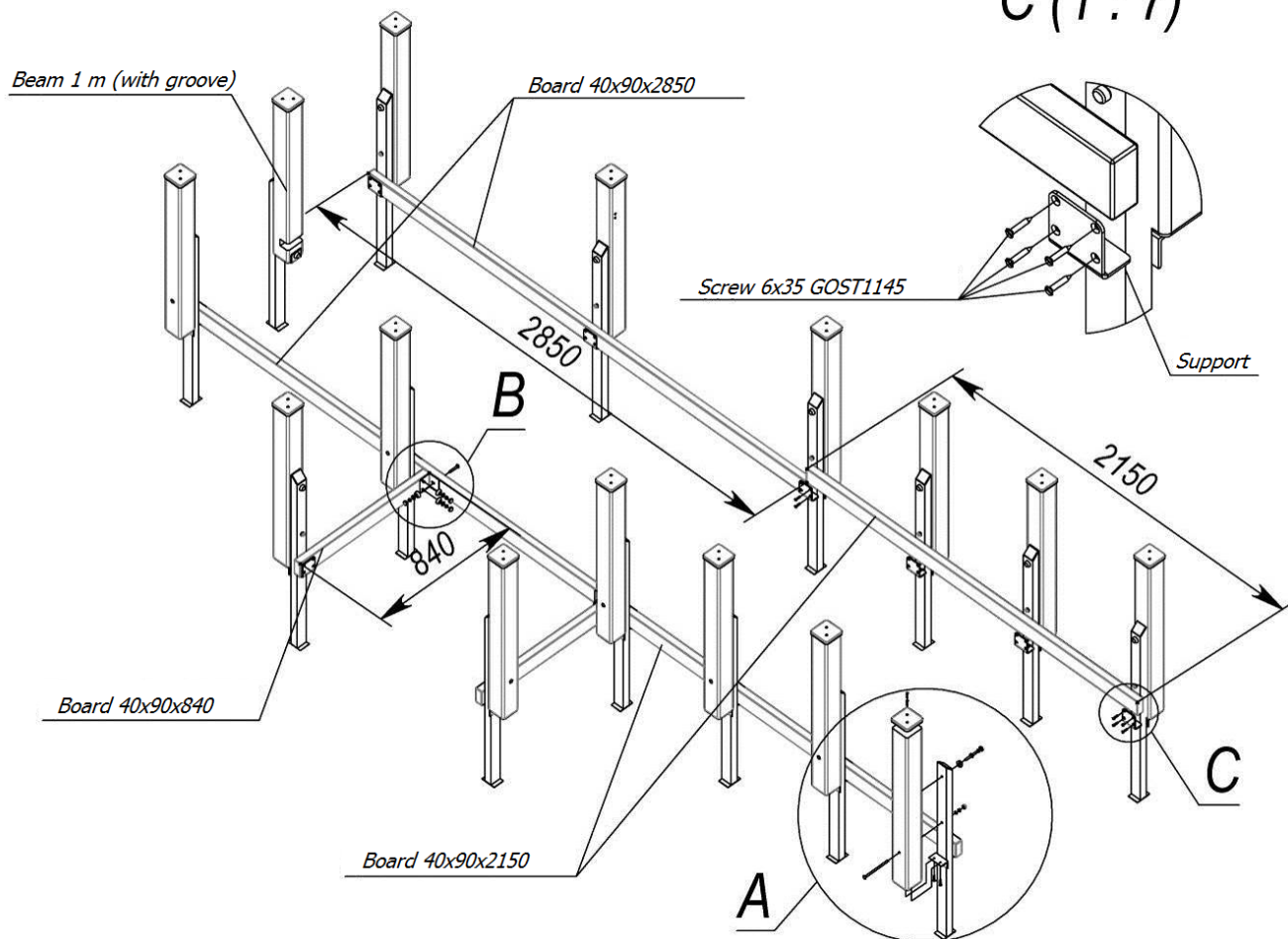


*View from below*



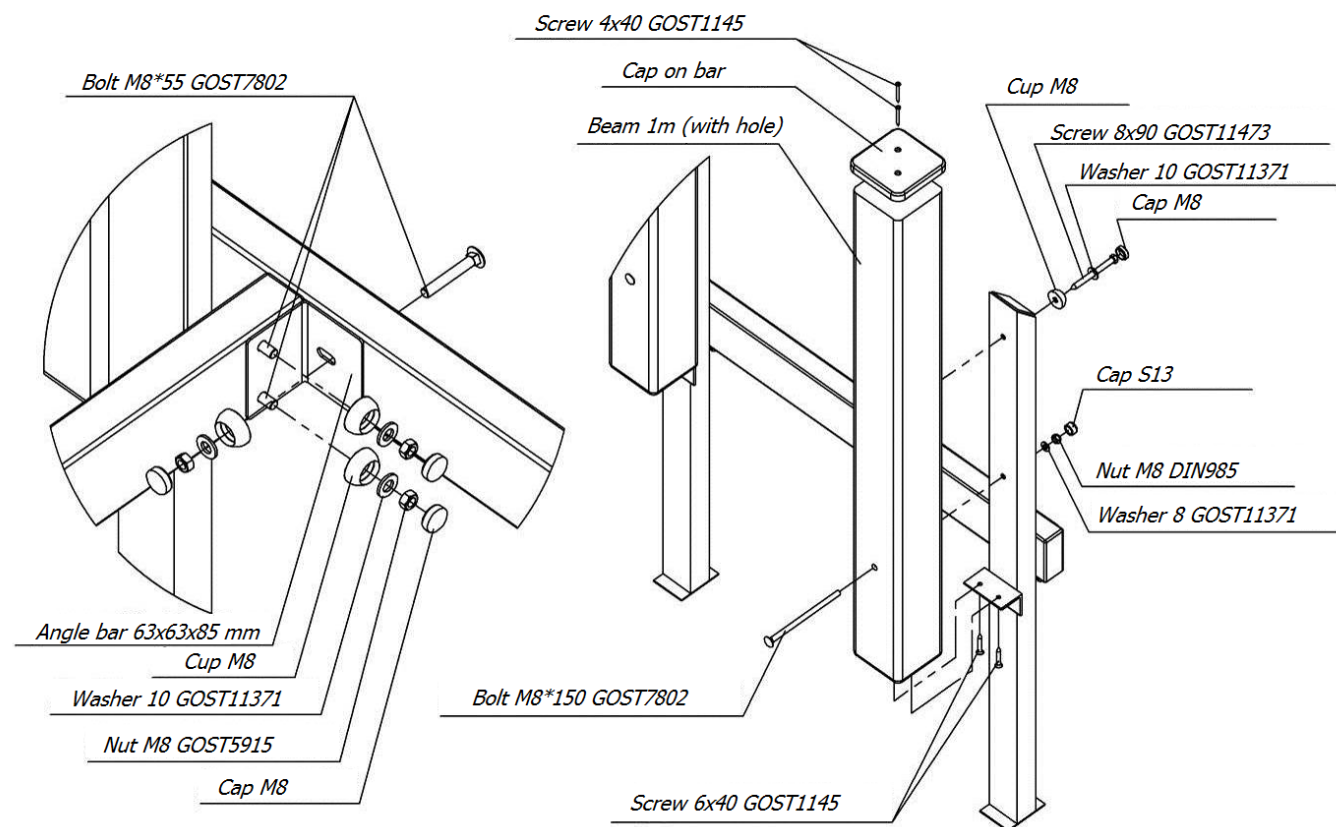
**Picture 4**

C (1 : 7)

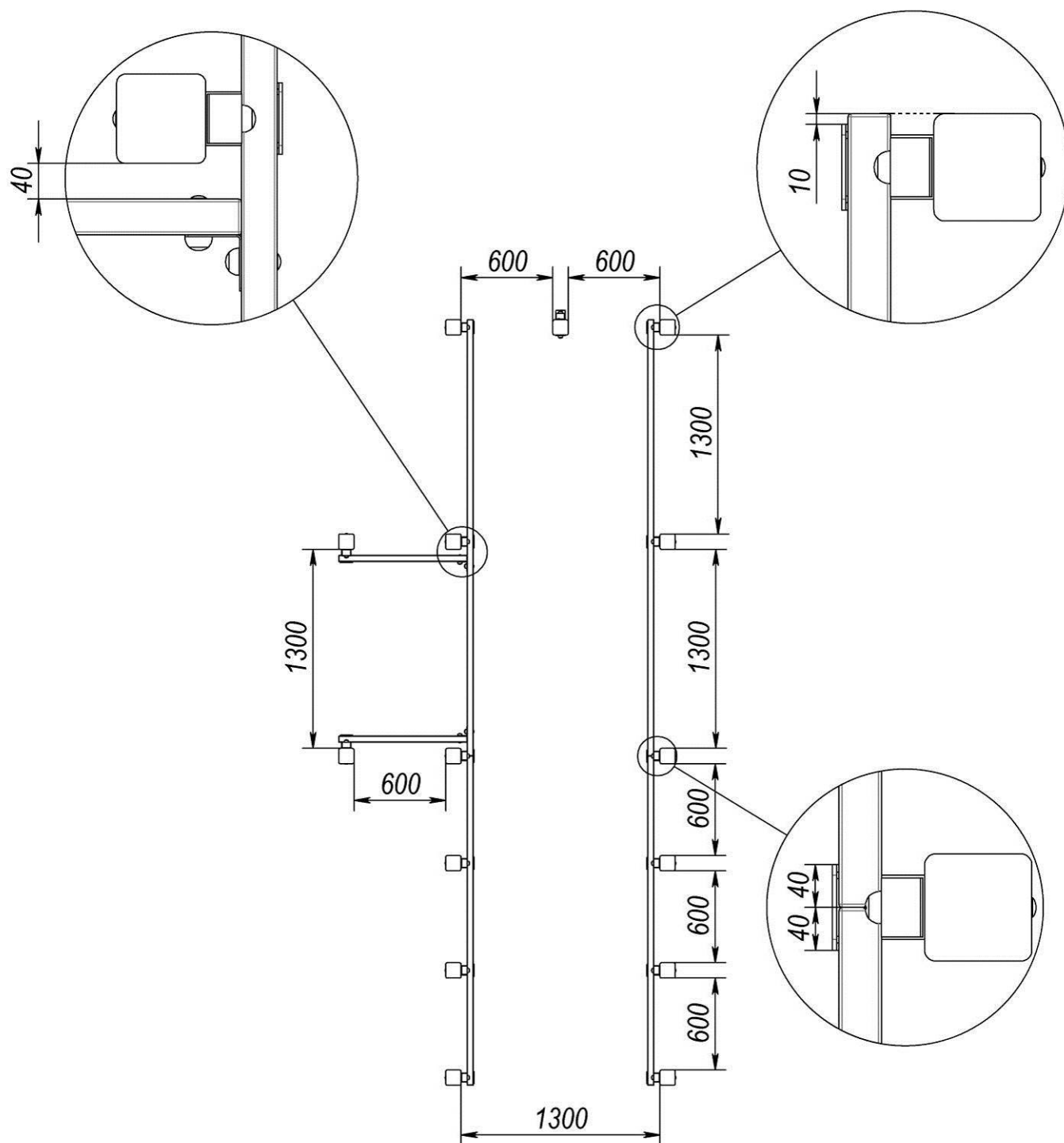


B (1 : 5)

A (1 : 10)

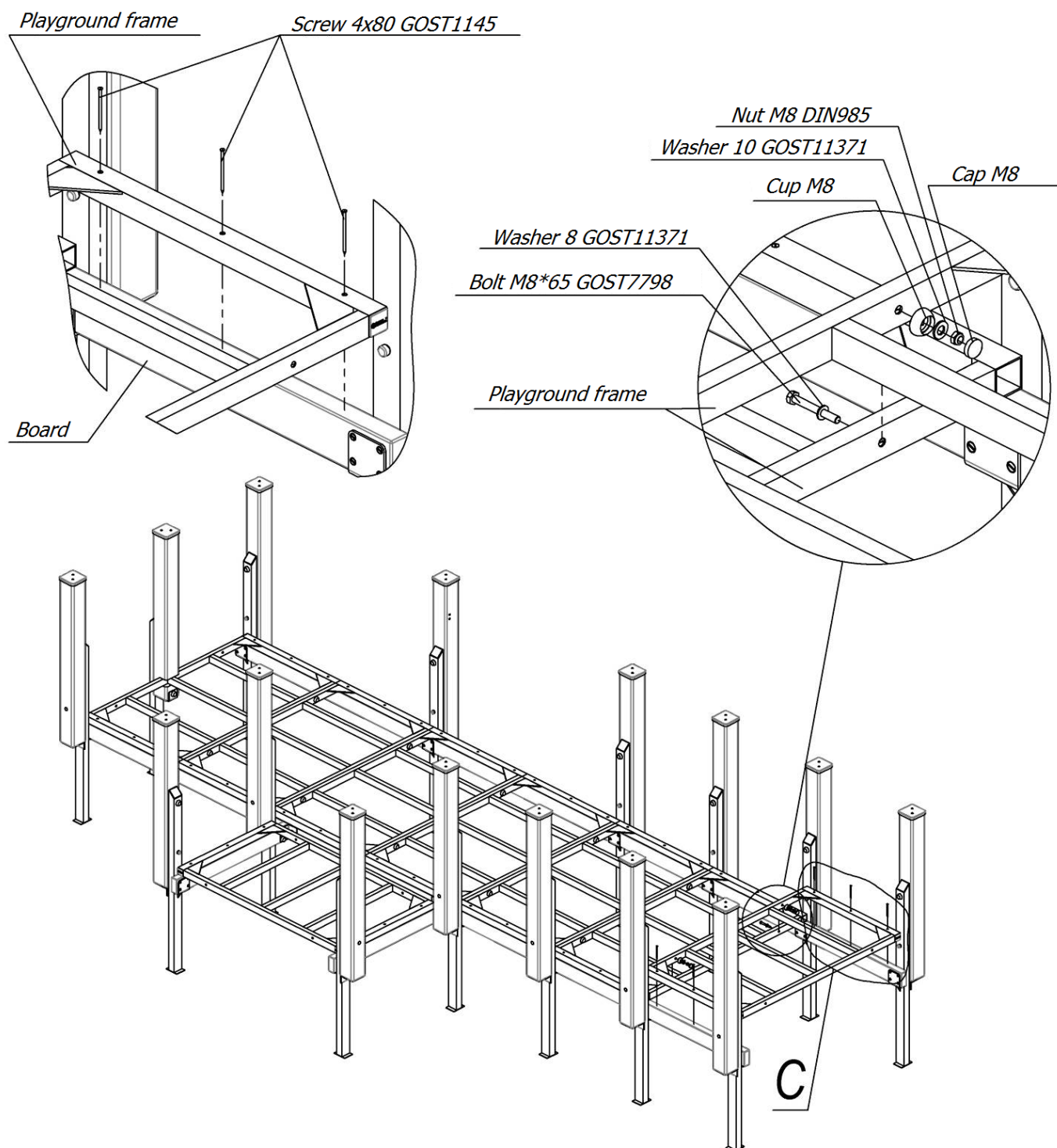


Picture 5 – Assembly scheme of supports and boards

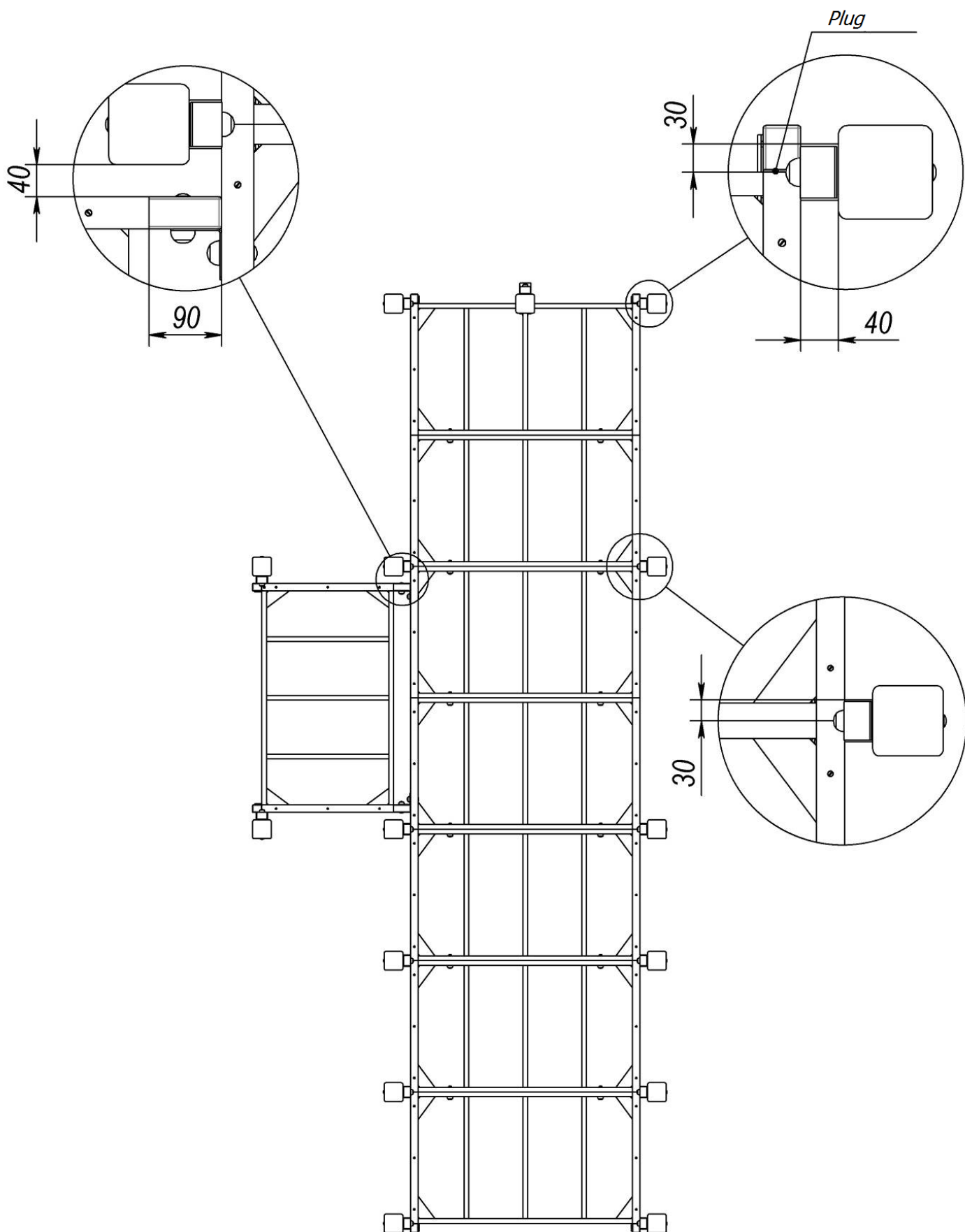


**Picture 6 – Additionally to (assembly schemes of supports and boards)**

**C (1 : 9)**



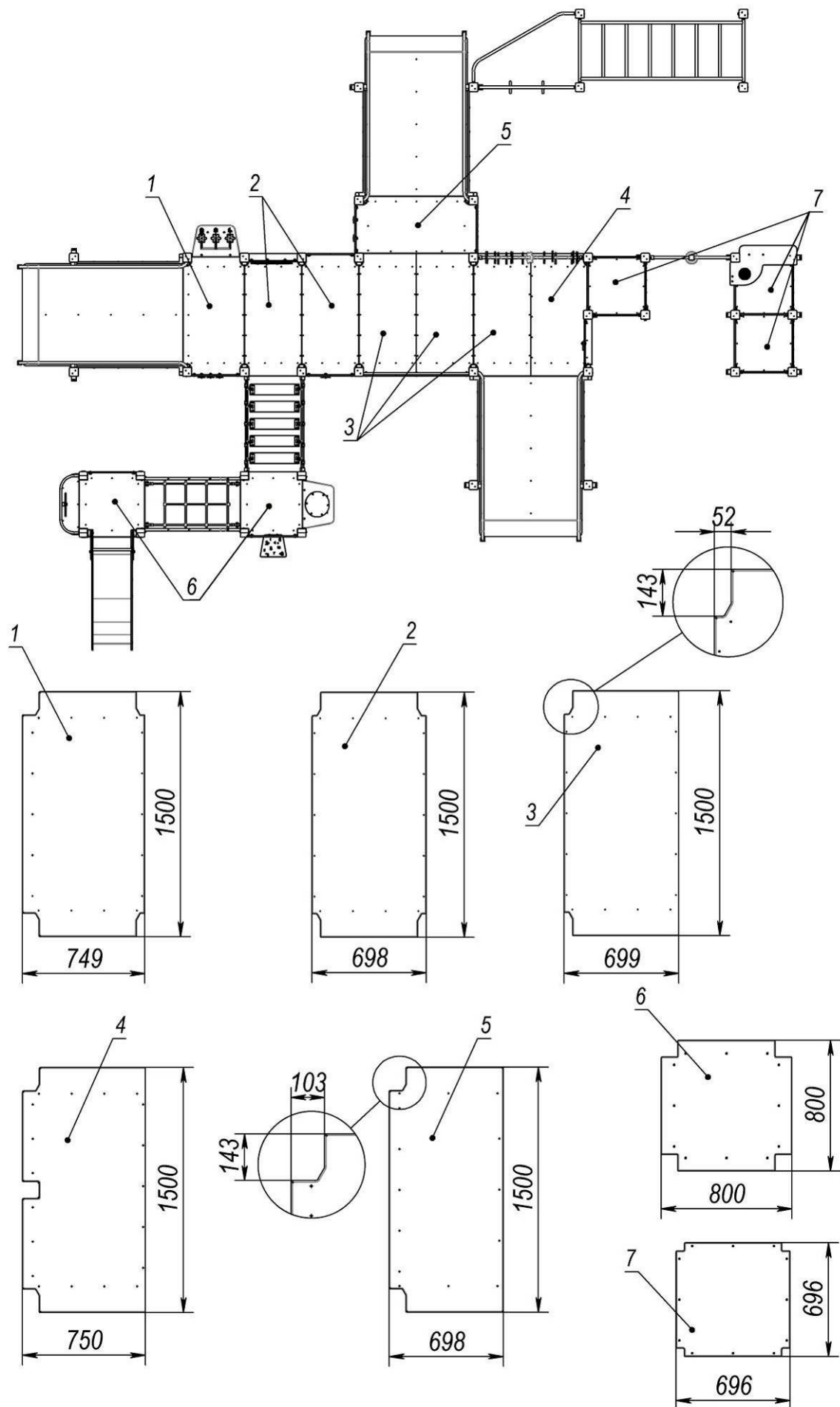
**Picture 7 – Assembly scheme of playground frame**



**Picture 8 – Additionally to (assembly schemes of playground frame)**

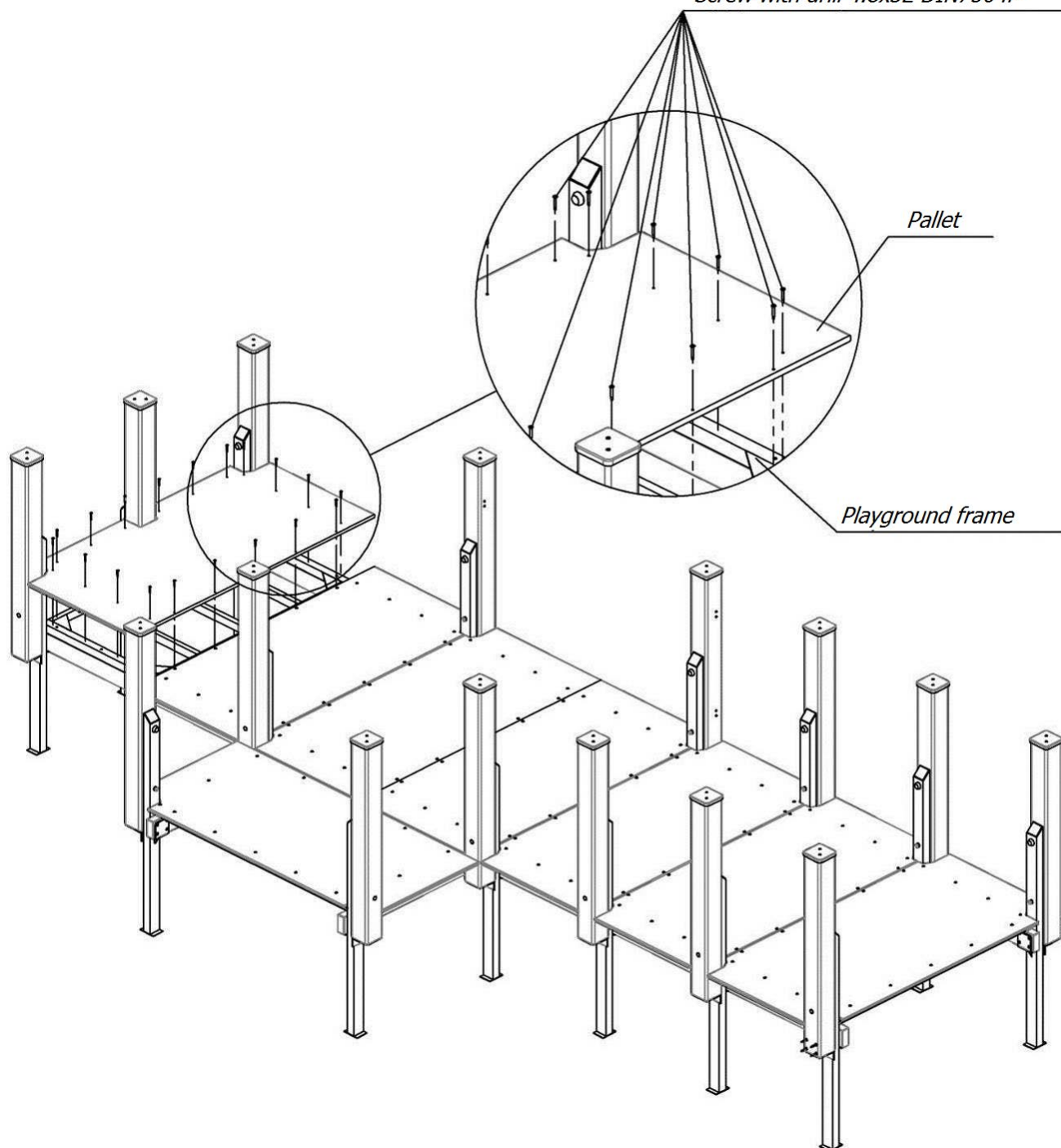


## Pallet layout scheme



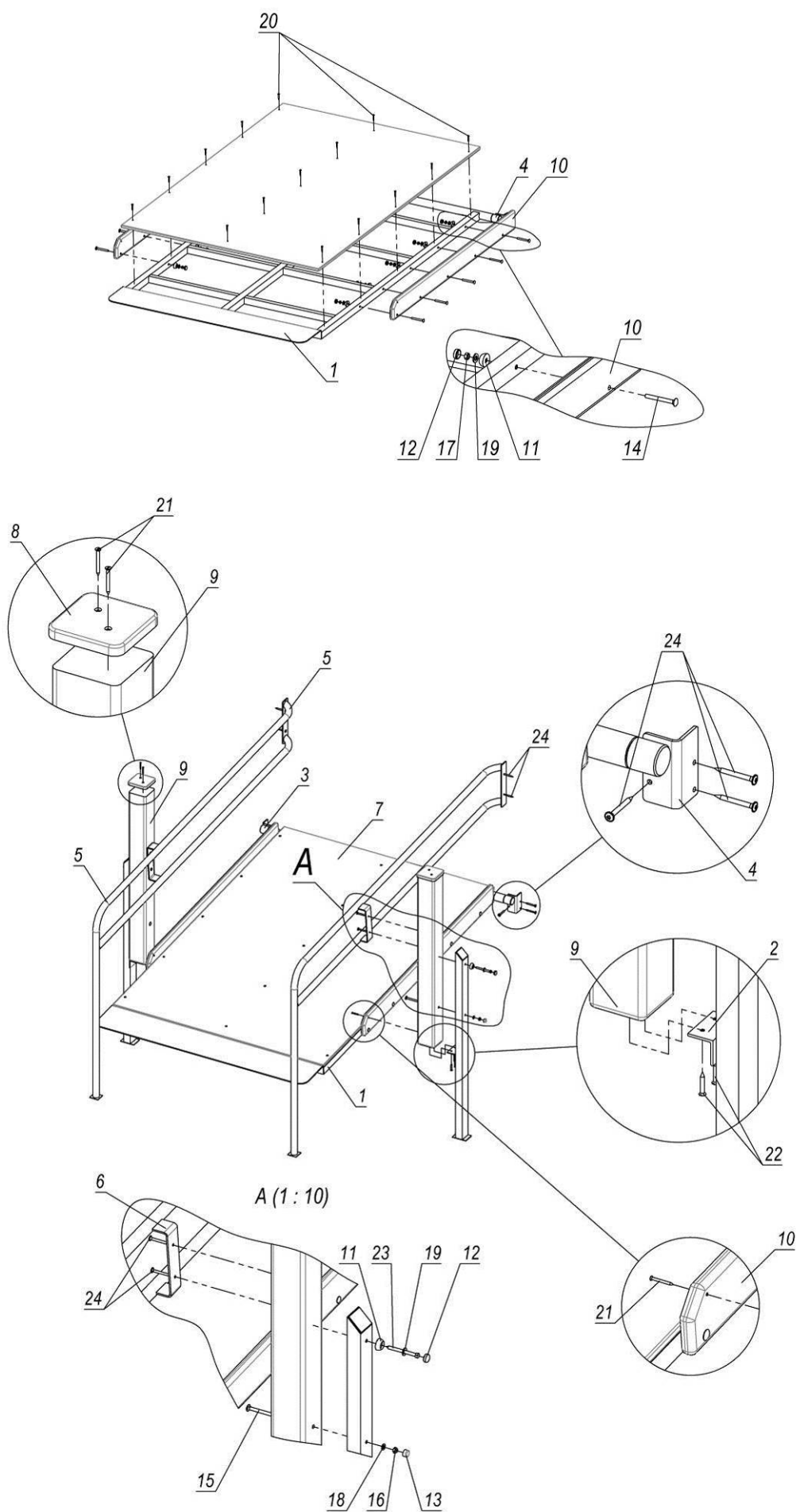
Picture 9

*Screw with drill 4.8x32 DIN7504P*



**Picture 10 – Installation and fastening of pallets**

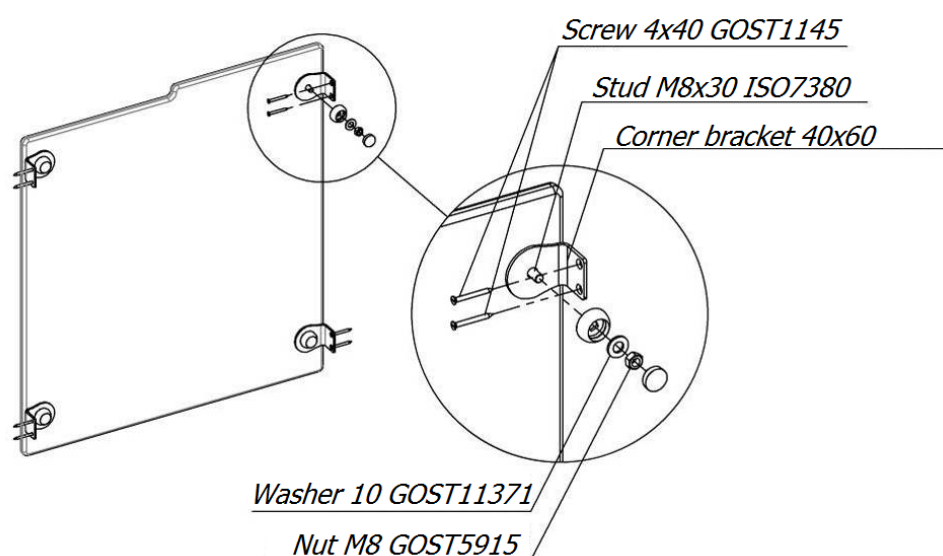
## Assembly scheme of ramp

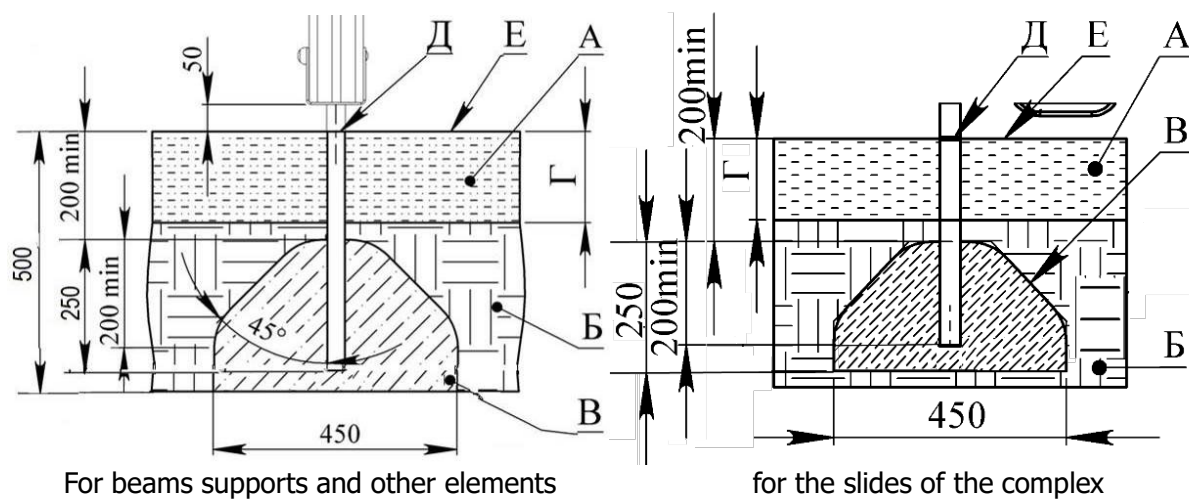


**Picture 11**

**Table 1 – Completeness of ramp**

<i>Pos.</i>	<i>Name</i>	<i>Weight, kg</i>	<i>Q-ty</i>
1	Ramp frame 0.2m	35	1
2	Ramp support	4	2
3	Ramp connector right	1	1
4	Ramp connector left	1	1
5	Right railings	12	1
6	Left railings	12	1
7	Ramp slope	25	1
8	Cap on bar		2
9	Beam 1m (with hole)	6	2
10	Board limiter	2	2
11	Cup M8		12
12	Cap M8		12
13	Cap S13		2
14	Bolt M8*75 GOST7802		10
15	Bolt M8*150 GOST7802		2
16	Self-locking nut M8 DIN985		2
17	Nut M8 GOST5915		10
18	Washer 8 GOST11371		2
19	Washer 10 GOST11371		12
20	Screw with drill 4.8x32 DIN7504P	5	15
21	Screw 4x40 GOST1145		6
22	Screw 6x40 GOST1145		4
23	Screw 8x90 GOST11473		2
24	Screw 6.0x60 SPAX T-STAR plus with press washer (univers.)		14

**Picture 12 – Panel fastening scheme**



*A - shock-absorbing coating;*

*Б – soil;*

*В – concrete;*

*Г - depth of the shock absorbing coating;*

*Д - product level plane;*

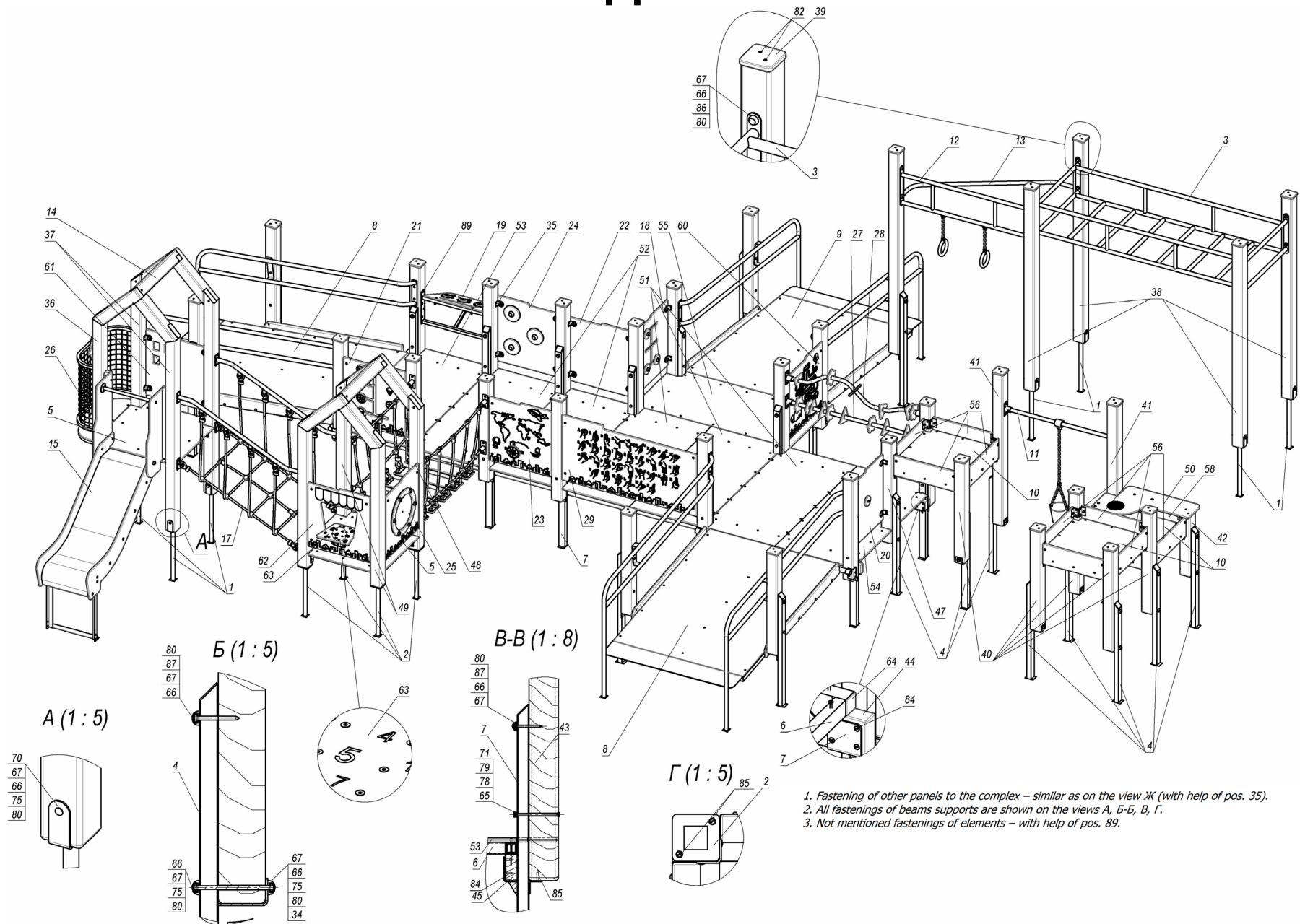
*Е – game surface.*

#### Examples of impact-absorbing coatings

Material <sup>1</sup>	Description	Minimal depth, mm	Height of fall, mm
Turf			≤1000
Tree bark	grain size 20-80 mm	200	≤2000
		300	≤3000
Sawdust	grain size 5-30 mm	200	≤2000
		300	≤3000
Sand <sup>2</sup>	grain size 0,2-2 mm	200	≤2000
		300	≤3000
Gravel <sup>2</sup>	grain size 2-8 mm	200	≤2000
		300	≤3000
Another material	HIC tested according to EN1177	According to the test	According to the test
1. Materials specially prepared for playgrounds. 2. There should not be any clay inclusions. The grain size is obtained by sieving through a sieve as in EN933-1.			

**Picture 13 – Concreting scheme**

# Appendix



Picture 1



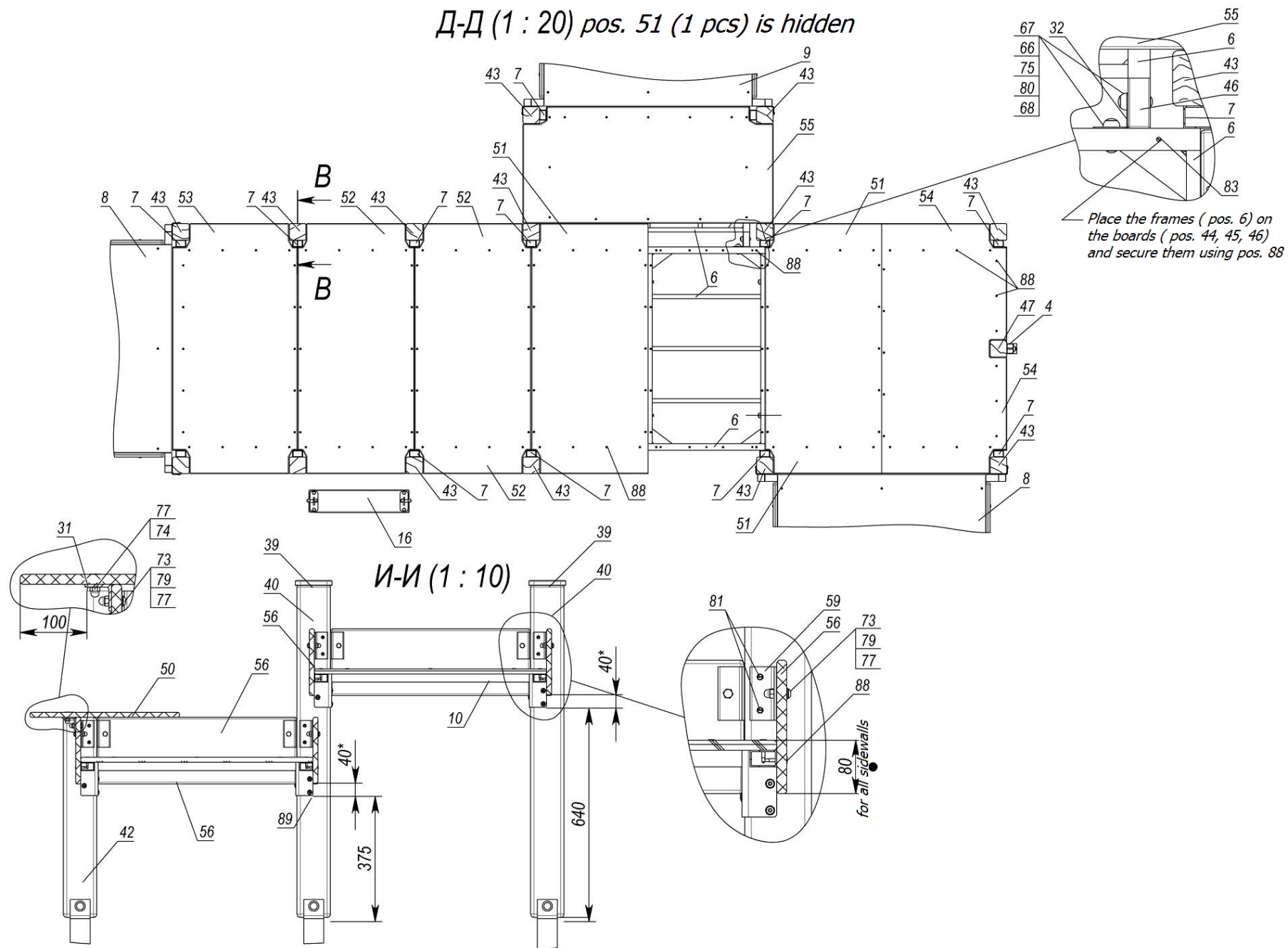
Pos.	Name	Weight, kg	Q-ty	Pos.	Name	Weight, kg	Q-ty
1	Beam support	2	8	46	Board 40x90x840	2	2
2	Support	1	4	47	Beam 1m (with groove)	6	1
3	Monkey bar	36	1	48	Beam 1.5m right	8	2
4	Supportive rack	4	9	49	Beam 1.5m left	8	2
5	Site 0.8x0.8 m	13	2	50	Sandbox table	4	1
6	Playground frame (0.7x1.22)	12	8	51	Pallet (0.7x1.5)	12	3
7	Support (TE835)	5	14	52	Pallet (0.7x1.5) separate	11	2
8	Ramp 0.2m	111	2	53	Pallet (0.7x1.5) end pallet	12	1
9	Ramp 0.2m	117	1	54	Pallet (0.7x1.5) with groove	12	1
10	Sandbox site assembly	11	3	55	Pallet (0.7x1.5) side	11	1
11	Crossbar with bucket	5	1	56	Sandbox sidewall (200x598)		10
12	Brace rod with rings (1.2m)	8	1	57	Sandbox sidewall (200x598)		1
13	Croner crossbar	5	1	58	Sandbox sidewall (200x598)		1
14	Roof without slope	15	2	59	Angle bar 40x40x4 L=80		24
15	Slide 0.7m assembly	38	1	60	Panel "Labyrinth"	4	1
16	Rope walkway (1.17m)	28	1	61	Panel "Cat in window"	4	1
17	Rope bridge 1.17m		1	62	Panel "Showcase"	3	1
18	Panel "Riddle" assembly	5	1	63	Table with numbers		1
19	Game console	7	1	64	Plug 40x40		6
20	Panel "Clock" assembly	5	1	65	Cap S13		14
21	Panel "Sweets" assembly	5	1	66	Cap M8		122
22	Braille panel assembly	4	1	67	Cup M8		122
23	Panel "World map" assembly	5	1	68	Bolt M8*55 DIN603 (furniture)		6
24	Panel "Gear wheels" assembly	8	1	69	Bolt M8*65 DIN933 (full thread)		12
25	Vertical labyrinth	8	1	70	Bolt M8*120 GOST7802		8
26	Small balcony (mesh)	14	1	71	Bolt M8*150 DIN603 (furniture)		14
27	Counting frame 1.3m	6	1	72	Stud M6x25 DIN7991		8
28	Counting frame 1.3m bent	5	1	73	Stud M8x30 ISO7380		70
29	Panel "Gestures" assembly	13	1	74	Stud M8*30 DIN7991 (countersunk)		4
30	Showcase angle bar		2	75	Nut M8 GOST5915		71
31	Bracket		1	76	Cap nut M6 DIN1587		8
32	Angle bar 63x63x85 mm		2	77	Nut M8 DIN1587 (cap nut)		35
33	Angle bar 40x40x100 mm		1	78	Nut M8 DIN985 (lock nut)		26
34	Sprig		9	79	Washer 8 GOST11371		53
35	Corner bracket 40x60		39	80	Washer 10 DIN125 (flat)		118
36	Beam 2 m right	11	2	81	Screw 4*25 DIN7997 (countersunk-univ., PZ)		48
37	Beam 2 m left	11	2	82	Screw 4x40 GOST1145		138
38	Beam 2.0 m	12	4	83	Screw 4*80 DIN7997 (countersunk-univ., PZ)		48
39	Cap on bar		26	84	Screw 6*35 DIN7997 (countersunk-univ., PZ)		64
40	Beam 1 m (with hole)	6	5	85	Screw 6*40 DIN7997 (countersunk-univ., PZ)		36
41	Beam 1.5 m (with hole)	9	2	86	Screw 8*70 DIN571 (hexagonal)		16
42	Beam 0.6 m (with hole)	4	1	87	Screw 8*90 DIN571 (hexagonal)		23
43	Beam 1 m (with hole)	6	14	88	Screw with drill 4.8x32 DIN7504P		179
44	Board 40x90x2850	6	2	89	Screw 6.0x60 SPAX T-STAR plus with press washer (univ.)		152
45	Board 40x90x2150	5	2				

Picture 2

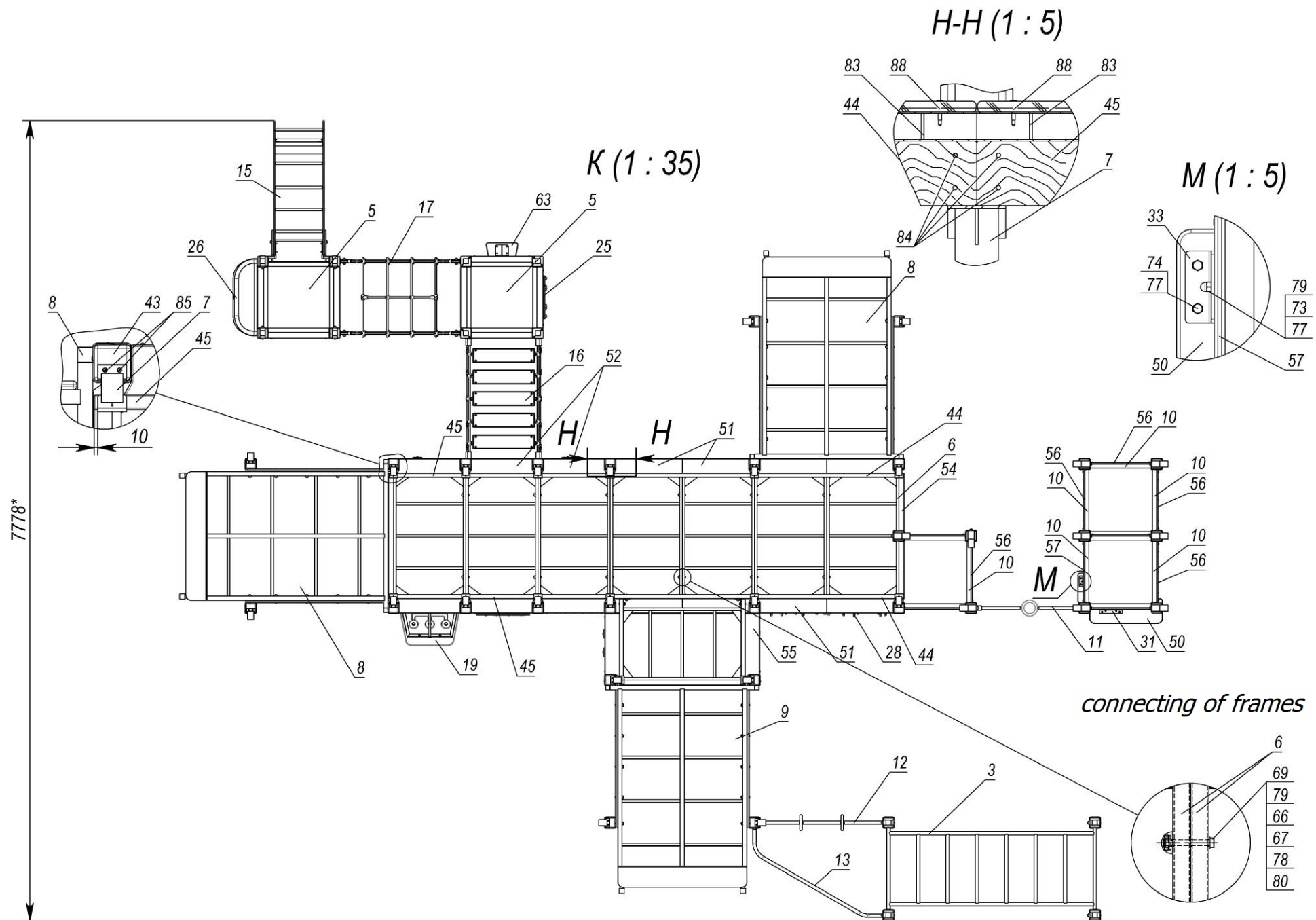




Д-Д (1 : 20) pos. 51 (1 pcs) is hidden



Picture 4



**Picture 5**