

interatletika™

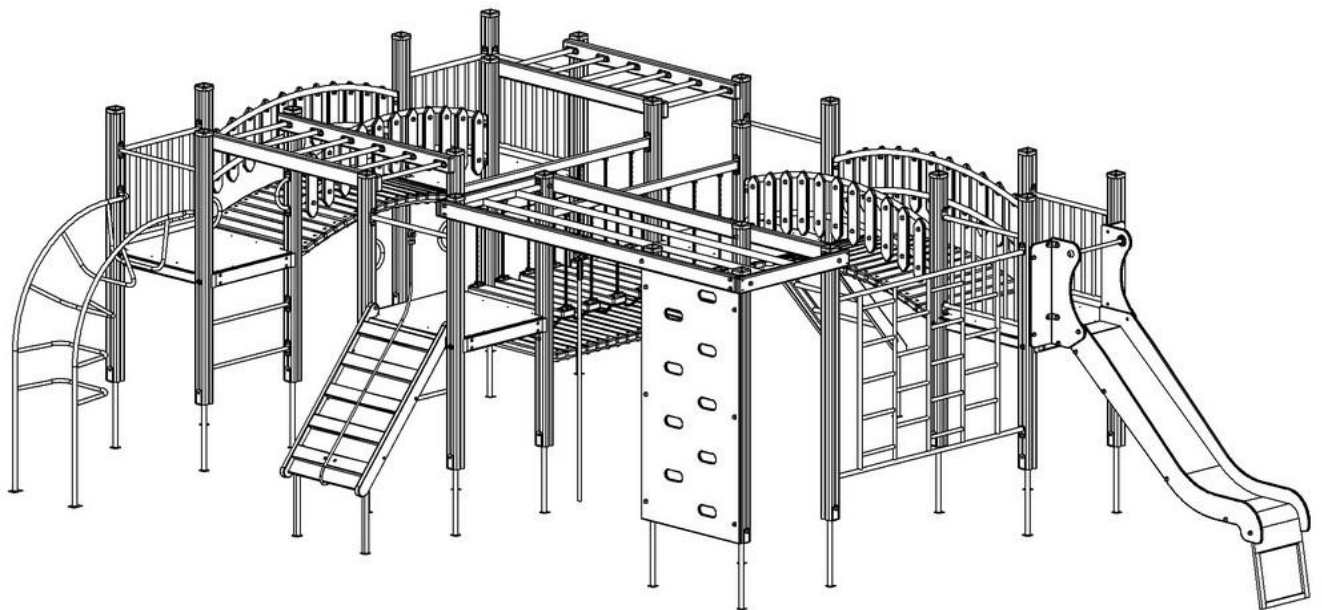
PRODUCTION AND SALE OF SPORTS GOODS

Customer support:
+38 095 273 81 53
play.interatletika.com

DATA SHEET

Gymnastic complex Labyrinth «Pirate»

S715.1M



1. GENERAL INFORMATION

Purpose and content of this document. This document contains a general description of the equipment, information on installation, intended use, maintenance, current repair and manufacturer's warranty.

Distribution of this document for product modifications. The manufacturer can make changes to the design of the product, aimed at improving its characteristics, changing the design, etc. This document may not contain a description of such changes, but applies to such modified products.

2. MAIN TECHNICAL DATA AND CHARACTERISTICS

Length, mm	8456
Width, mm	5834
Height, mm	2245
Weight, kg	1106
Height of fall, mm	1254
Age range, years	Up to 12
Weight limits, kg	Up to 60

3. COMPLETENESS AND CHARACTERISTICS OF THE MAIN PARTS OF THE PRODUCT

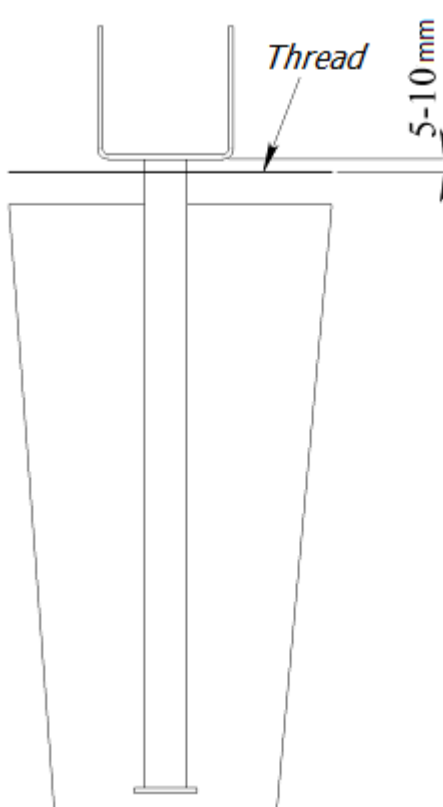
The gymnastic complex is delivered disassembled and consists of a set of various gymnastic elements, such as: suspension bridges, arch ladders, ascents, radial bridges, and others. The names and characteristics of the main components of the gymnastic complex are presented in the Appendix. The gymnastic complex is intended for sports and recreational use.

4. PRODUCT ASSEMBLY AND INSTALLATION PROCEDURE

Tools and accessories. The product does not include the tools required for assembly and installation.

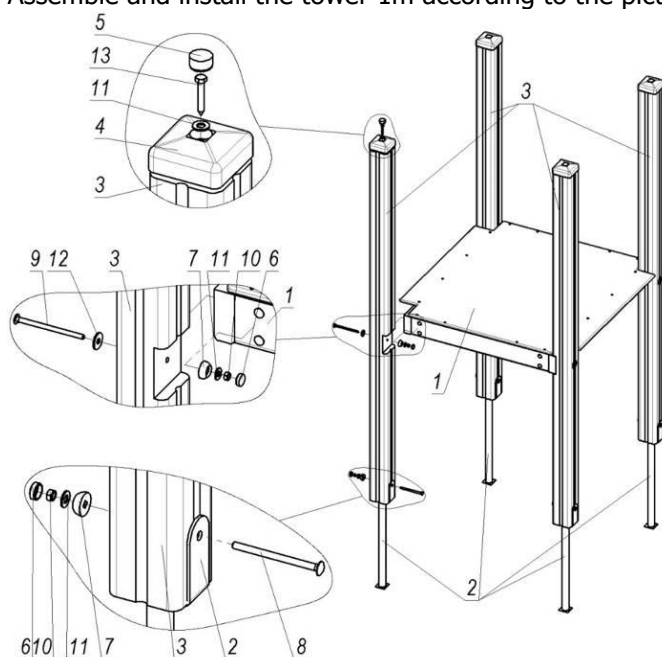
Product assembly and installation procedure.

- 1) Mark out the area as indicated on the foundation layout scheme.
- 2) Dig holes and install posts, maintaining the geometric dimensions specified in the concreting scheme below.
- 3) Pull the threads along the prepared recesses, marking zero (the level of the covering, or if there is no covering, then the ground). Level the depth of the supports in advance.



Picture 1

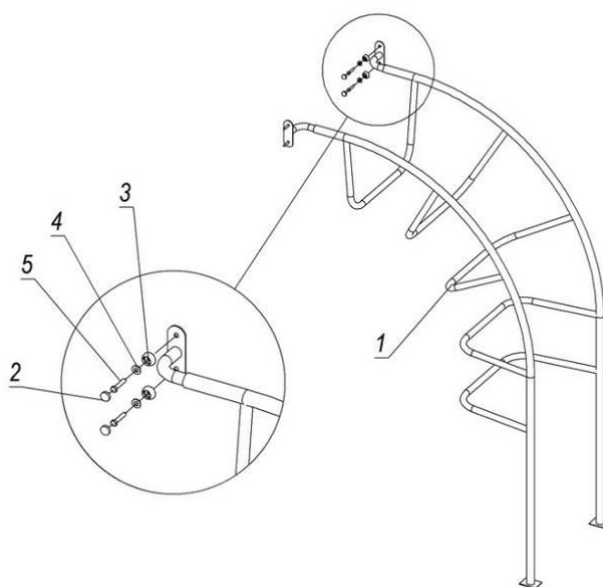
4) Assemble and install the tower 1m according to the picture/appendix:



Pos.	Name	Weight, kg	Q-ty
1	Site	19	1
2	Beam support	2	4
3	Beam 2.0 m	11	4
4	Cap		4
5	Cap		4
6	Cap M8		8
7	Cup M8		8
8	Bolt M8x120 GOST7802		4
9	Bolt M8x130 GOST7802		4
10	Nut M8 GOST5915		8
11	Washer 10 GOST11371		12
12	Washer 10 GOST6958		4
13	Screw 8x50 GOST11473		4

Picture 2

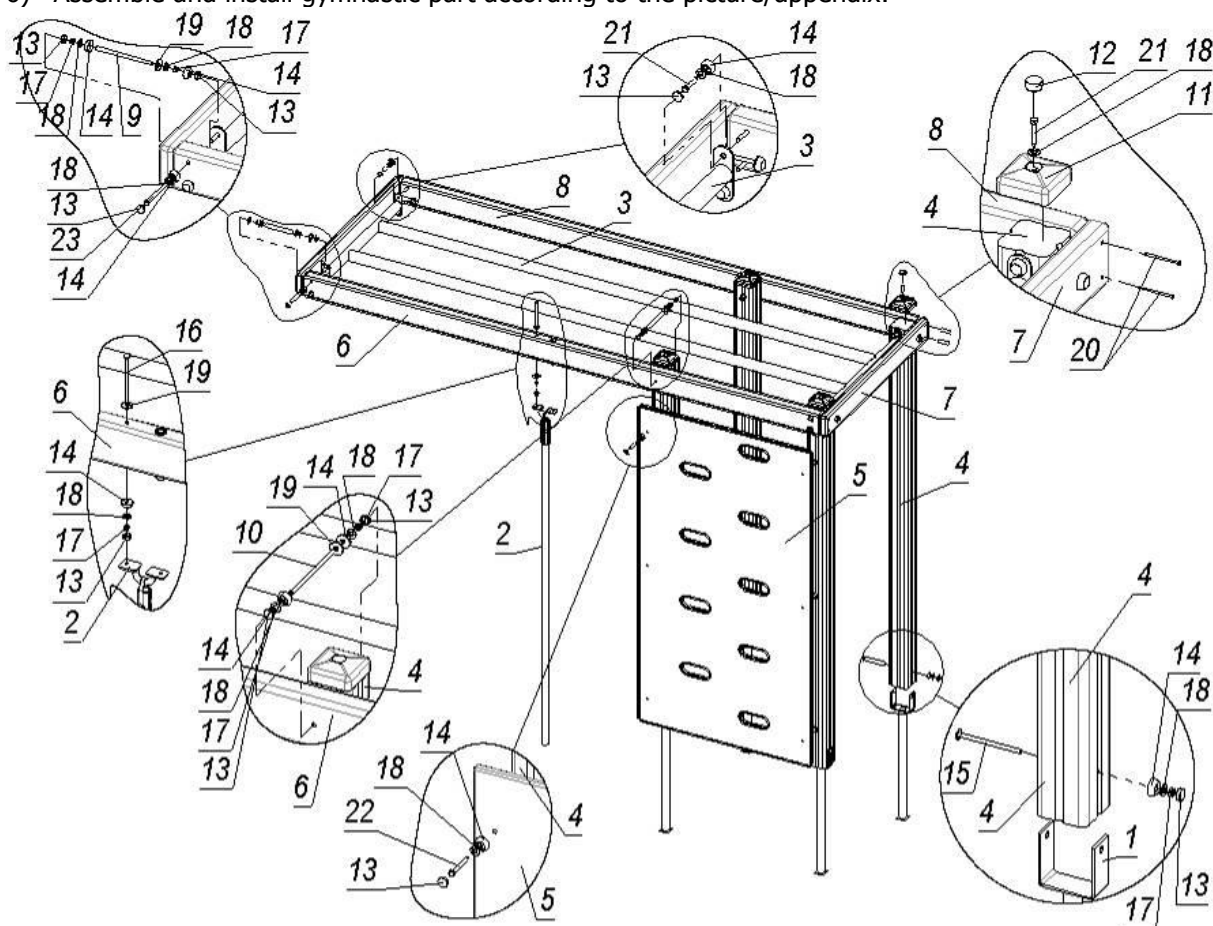
5) Assemble and install arch ladder according to the picture/appendix:



Pos.	Name	Weight, kg	Q-ty
1	Arch ladder	21	1
2	Cap M8		4
3	Cup M8		4
4	Washer 10 GOST11371		4
5	Screw 8x50 GOST11473		4

Picture 3

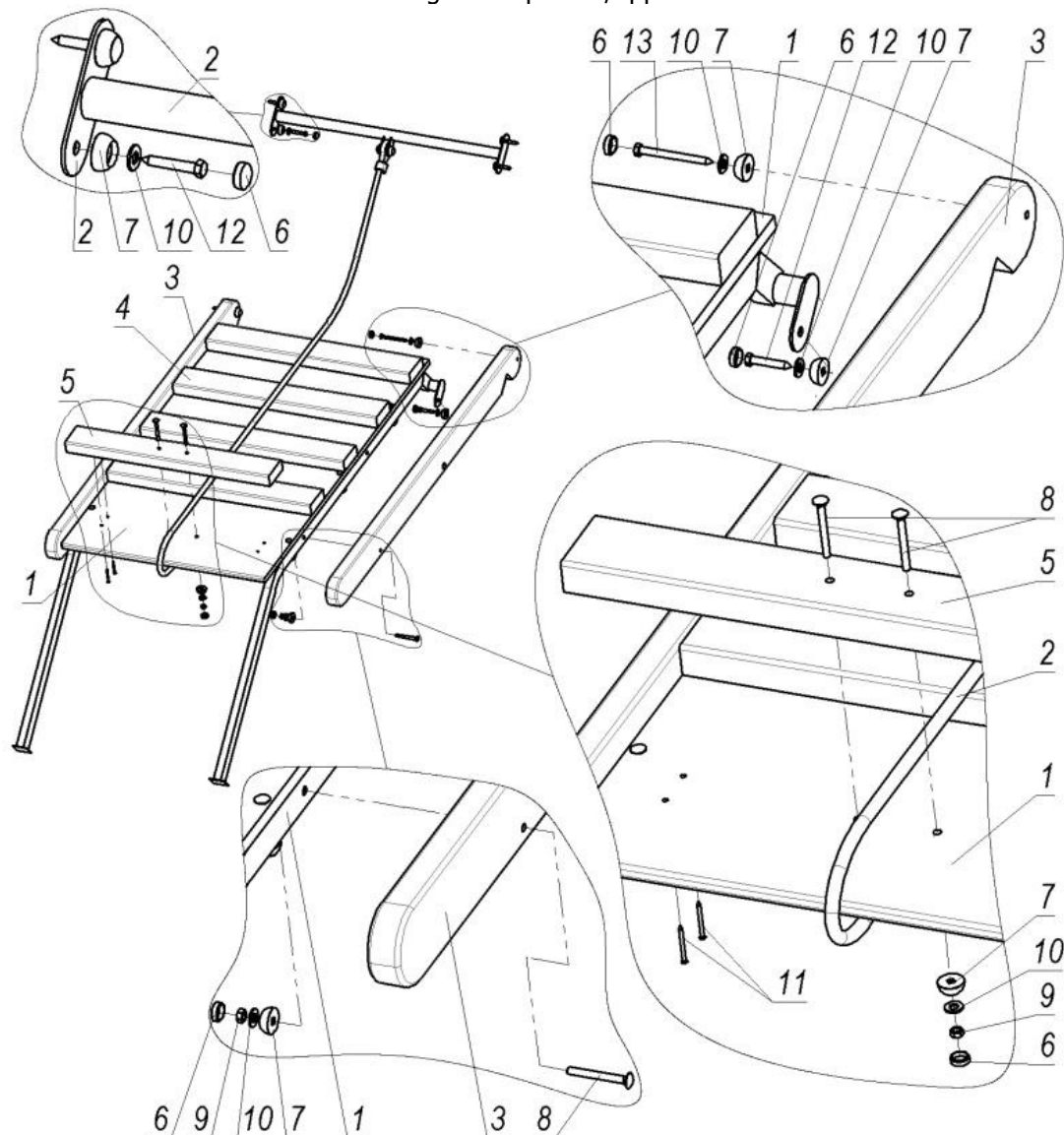
6) Assemble and install gymnastic part according to the picture/appendix:



Pos.	Name	Weight, kg	Q-ty
1	Beam support	2	4
2	Rope assembly	2	1
3	Crossbar	24	1
4	Beam	11	4
5	Shield	24	1
6	Board	13	1
7	Board	3	2
8	Board	13	1
9	Sprig L=165 mm		4
10	Sprig L=190 mm		2
11	Cap		4
12	Cap		4
13	Cap M8		40
14	Cup M8		40
15	Bolt M8x120 GOST7802		4
16	Bolt M8x140 GOST7802		2
17	Nut M8 GOST5915		18
18	Washer 10 GOST 11371		44
19	Washer 10 GOST6958		8
20	Screw 4x70 GOST1145		8
21	Screw 8x50 GOST11473		12
22	Screw 8x70 GOST11473		6
23	Screw 8x110 GOST11473		8

Picture 4

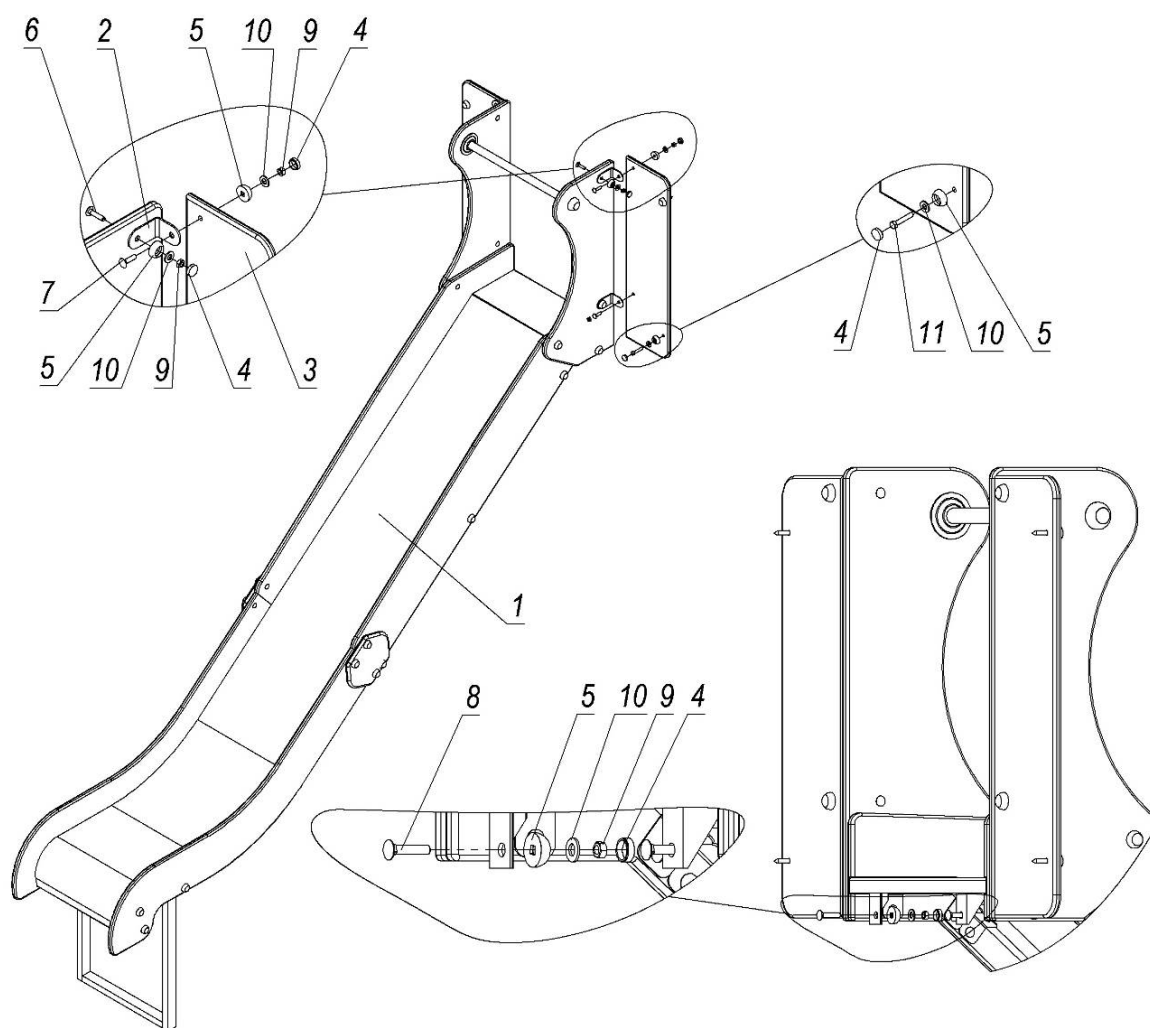
7) Assemble and install ascent according to the picture/appendix:



Pos.	Name	Weight, kg	Q-ty
1	Ascent	23	1
2	Brace rod assembly with rope	3	1
3	Board	3	2
4	Step	2	4
5	Step	2	1
6	Cap M8		14
7	Cup M8		14
8	Bolt M8x75 GOST7802		6
9	Nut M8 GOST5915		6
10	Washer 10 GOST11371		14
11	Screw 4x50 GOST1145		20
12	Screw 8x50 GOST11473		6
13	Screw 8x90 GOST11473		2

Picture 5

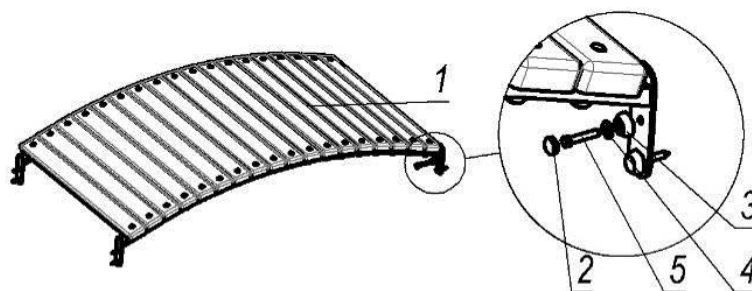
8) Assemble and install slide according to the picture/appendix:



Pos.	Name	Weight, kg	Q-ty
1	Slide 1500 mm	60	1
2	Angle bar	0.1	4
3	Fence	2	2
4	Cap M8		14
5	Cup M8		14
6	Bolt M8x35 GOST7802		4
7	Bolt M8x30 GOST7802		4
8	Bolt M8x40 GOST7802		2
9	Nut M8 GOST5915		10
10	Washer 10 GOST11371		14
11	Screw 8x50 GOST11473		4

Picture 6

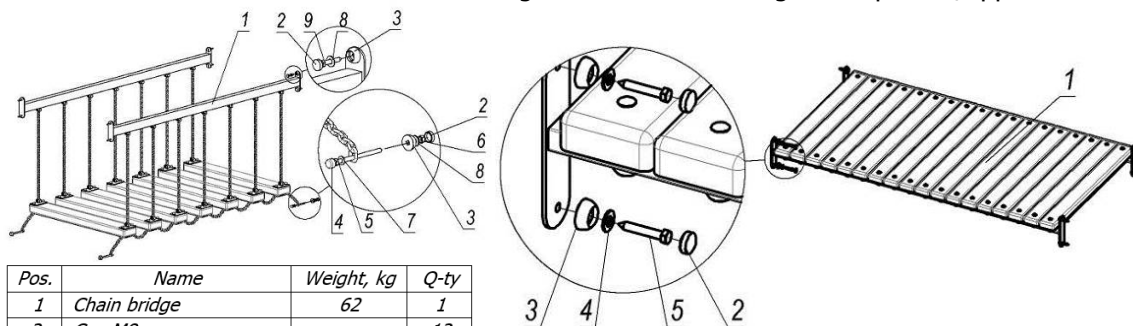
9) Assemble and install radial bridge according to the picture/appendix:



Pos.	Name	Weight, kg	Q-ty
1	Radial bridge	60	1
2	Cap M8		8
3	Cup M8		8
4	Washer 10 GOST11371		8
5	Screw 8x50 GOST11473		8

Picture 7

10) Assemble and install straight bridge and bridge on chains according to the picture/appendix:

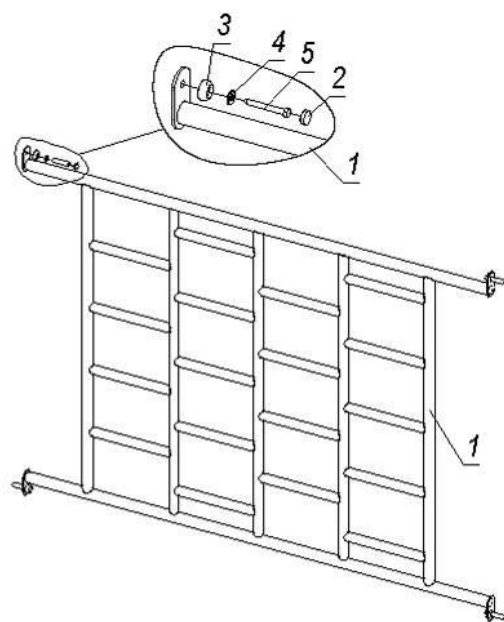


Pos.	Name	Weight, kg	Q-ty
1	Chain bridge	62	1
2	Cap M8		12
3	Cup M8		12
4	Cap S13		4
5	Bolt M8x120 DIN931		4
6	Nut M8 GOST5915		4
7	Washer 8 GOST11371		4
8	Washer 10 GOST11371		12
9	Screw 8x50 GOST11473		8

Pos.	Name	Weight, kg	Q-ty
1	Straight bridge	59	1
2	Cap M8		8
3	Cup M8		8
4	Washer 10 GOST11371		8
5	Screw 8x50 GOST11473		8

Picture 8

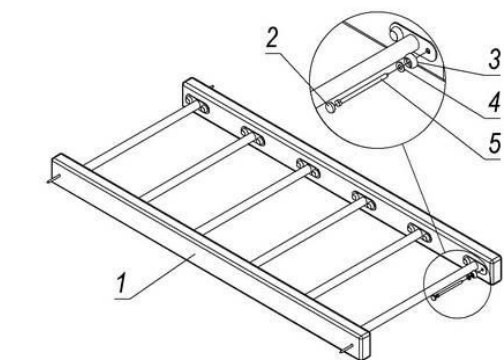
11) Assemble and install grate according to the picture/appendix:



Pos.	Name	Weight, kg	Q-ty
1	Metal grate	29	1
2	Cap M8		4
3	Cup M8		4
4	Washer 10 GOST11371		4
5	Screw 8x70 GOST11473		4

Picture 9

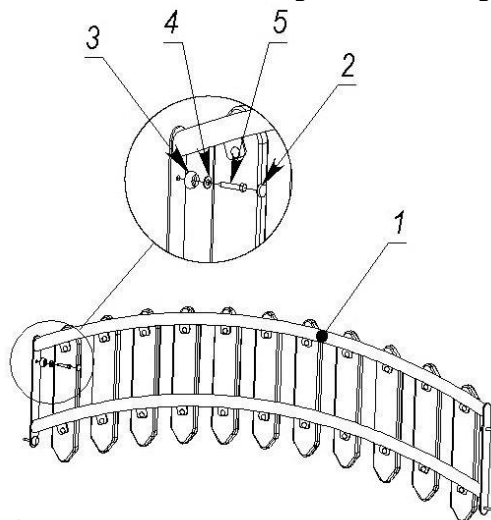
12) Assemble and install monkey bar according to the picture/appendix:



Pos.	Name	Weight, kg	Q-ty	Note
1	Monkey bar	26	1	
2	Cap M8		4	Yellow
3	Cup M8		4	Yellow
4	Washer 10 GOST11371		4	
5	Screw 8*140 DIN571		4	

Picture 10

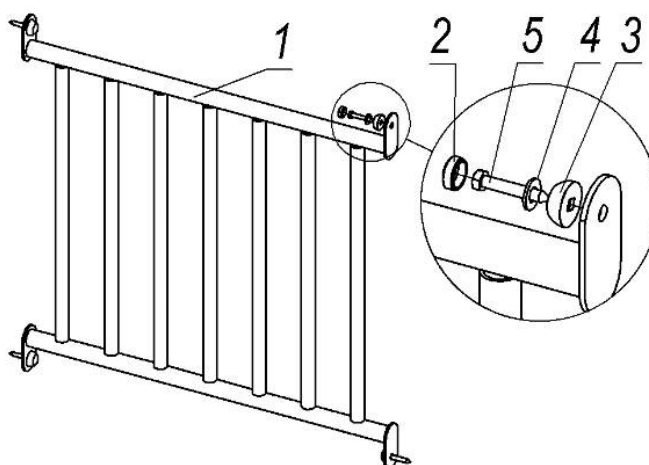
13) Assemble and install railings of radial bridge according to the picture/appendix:



Pos.	Name	Weight, kg	Q-ty
1	Bridge railings	20	1
2	Cap M8		4
3	Cup M8		4
4	Washer 10 GOST11371		4
5	Screw 8x50 GOST11473		4

Picture 11

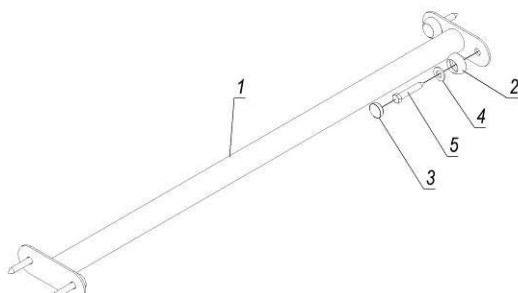
14) Assemble and install railings according to the picture/appendix:



Pos.	Name	Weight, kg	Q-ty
1	Railings	10	1
2	Cap M8		4
3	Cup M8		4
4	Washer 10 GOST11371		4
5	Screw 8x50 GOST11473		4

Picture 12

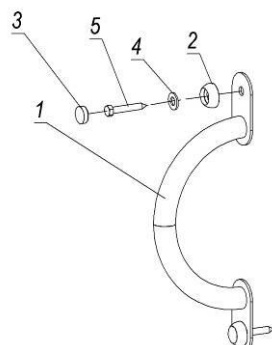
15) Assemble and install brace rod according to the picture/appendix:



Pos.	Name	Weight, kg	Q-ty
1	Brace rod	0.5	1
2	Cup M8		4
3	Cap M8		4
4	Washer 10 GOST11371		4
5	Screw 8x50 GOST11473		4

Picture 13

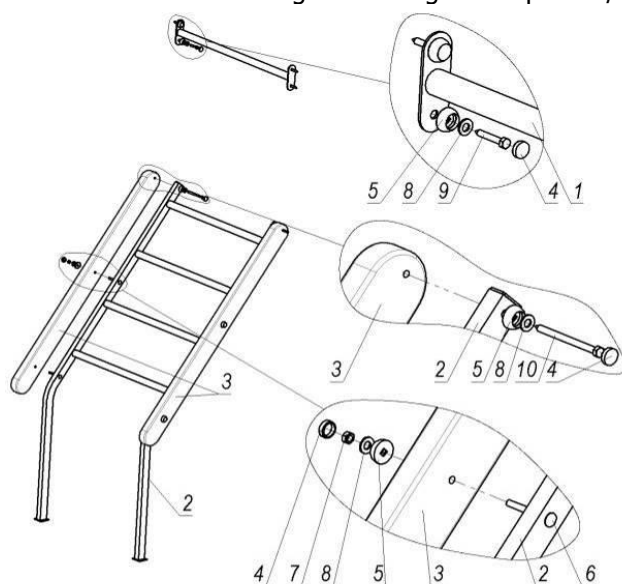
16) Assemble and install handle according to the picture/appendix:



Pos.	Name	Weight, kg	Q-ty
1	Small handle	1	1
2	Cup M8		2
3	Cap M8		2
4	Washer 10 GOST11371		2
5	Screw 8x50 GOST11473		2

Picture 14

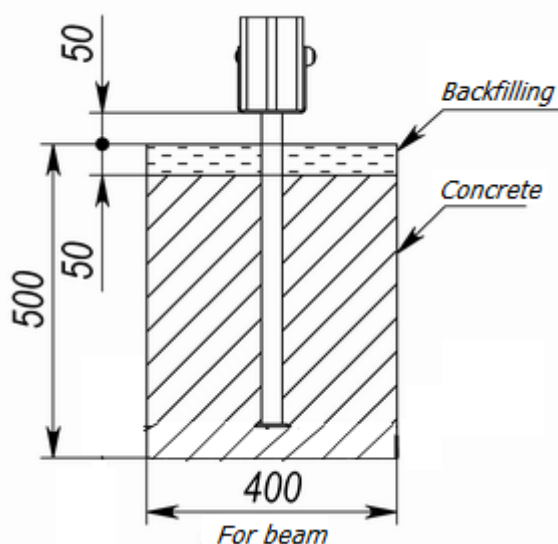
17) Assemble and install railings according to the picture/appendix:



Pos.	Name	Weight, kg	Q-ty
1	Ascent frame	12	1
2	Board	3	2
3	Plug 40x25		2
4	Cap M8		6
5	Cup M8		6
6	Bolt M8x55 GOST7802		4
7	Nut M8 GOST5915		4
8	Washer 10 GOST11371		6
9	Screw 8x110 GOST11473		2

Picture 15

18) Install the product and concrete according to pic. 11. During installation of the product on sandy soil the overall dimensions of the foundation should be increased by 15-20%.



Picture 16

5. PRODUCT INSTALLATION SCHEME

The safety zone of the installed product is shown in the appendix.

6. INFORMATION ON STORAGE, TRANSPORTATION AND DISPOSAL

The product is transported in the manufacturer's packaging by any means of transport that ensures its safety and protection from external factors (rain, snow, sunlight, water, high humidity, etc.).

Information about transportation

Date		Brand, state number of the car/trailer	Position, full name	Signature
Departure	Arrival			

Before installation store the product in the original packaging in dry, closed rooms with natural air ventilation.

If it is necessary to transport the product to another location after use it is recommended to use the manufacturer's packaging.

If you need to store the product for a long period of time, you must observe the following storage rules (the list of conditions is not complete):

- place the product in a closed, dry room with natural ventilation;
 - protect the product from external factors (dust, water drops, etc.) with a large plastic bag, leaving space for free air circulation;
 - take other measures to save the design and features of the product during storage.
- Observe the following recommendations when removing the product from storage and preparing for installation:
- remove the product from the packaging material (polyethylene, cardboard, other packaging materials);
 - remove dust and other contaminants from the surface of the product;
 - check that the parts are complete and not damaged.

Information about storage

Date		Product storage conditions	Full name	Signature
Putting into storage	Removal from storage			

After the end of the equipment's service life, the buyer determines the procedure for its usage by himself. If you decide to recycle the equipment, please contact the seller or specialised organisations. The equipment does not contain any harmful impurities or materials that can harm your health and is does not need special recycling.

7. PRODUCT USE

Do not use the product until it has been fully and completely installed.

The product must not be used by users of a different age category.

The product must not be used by users of a different weight category.

Before using the product, clear the safety area of any unnecessary objects that may cause damage to the user (debris, tools left over from assembly and installation, etc.).

Do not use the product in adverse weather conditions (ice, snow, rain, hail, strong winds, etc.), which may cause injury to the user.

8. PRODUCT MAINTENANCE

You have purchased high-quality and reliable equipment. In the process of its production, the requirements of regulatory and technical documents of Ukraine, the CIS countries and the European Union regulating the production of children's gaming equipment were taken into account. However, it should not be forgotten that when operating any technical product, certain rules and requirements must be followed. Despite the fact that our product is of high quality and reliability, this rule applies to it in full. You should be aware that the implementation of the following rules and recommendations for product maintenance is aimed at ensuring that your child, the child of your friends or acquaintances is safe and no unforeseen factors threaten his health, life.

Remember that the operation of the product is accompanied by the influence of various negative factors on it, a complete list of which cannot be predicted. Among them, an important place is occupied by natural factors and factors caused by human influence on equipment. As a rule, their action initially leads to disruptions in the appearance of the product. Thus, under the influence of factors caused by the exploitation of a person, there may be damage to the integrity of the paint coating of parts made of wood, in the form of scuffs, chips, incisions, and when exposed to parts made of metal, damage to the paint coating in the form of nicks, chips, abrasion, etc. This leads to the emergence and development of defects that can be the cause of the destruction of the product. The product is particularly dangerous if it is used for other than its intended purpose, if the permissible loads are exceeded, or if vandalism occurs, as these factors can cause irreversible changes in the structure of the material from which the product is made, leading to destruction.

The maintenance of the product implies, first of all, the responsibility of the user to comply with all recommendations provided in this document, starting with a daily inspection of the external condition of the product before operation.

Daily inspection of the product is a very important procedure. With its help, you can timely detect any changes in the appearance of the product (deformation of individual parts, deformation of the structure as a whole or part of it, damage to parts, cracks of welds, as well as the absence of fastening of parts of the product, etc.).

Before using the product, check its operability, absence of damage, dirt on the product, sharp edges, reliability of fixing the structure, absence of unnecessary objects on the surface of the site. If the product is damaged, fully or partially inoperable, or has any other defects, do not use it.

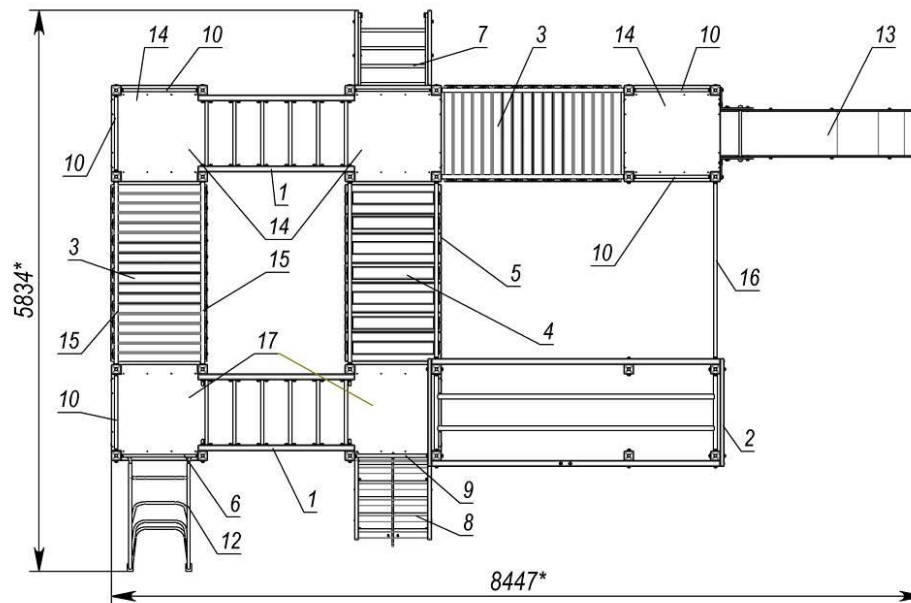
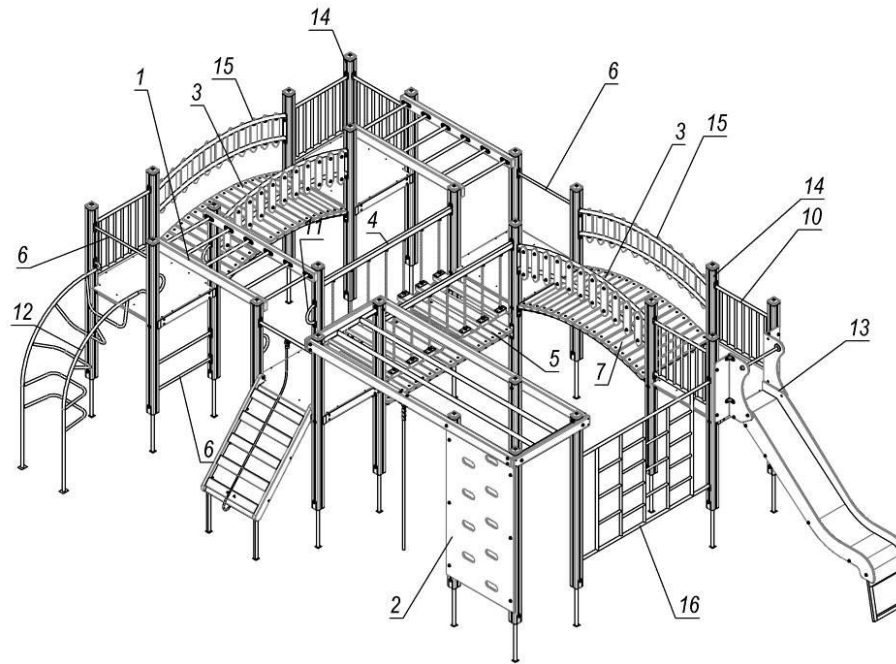
During operation it is also necessary to inspect the condition of the product periodically - the current inspection. It includes an external inspection of the product, checking its operability (in the presence of moving elements - the smoothness of the movement of mechanisms, compliance with operating modes, etc.). Current inspection allows you to detect malfunctions caused by the operation of equipment, climatic conditions, acts of vandalism and other factors, until they reach a critical level and the destruction of the product. The current inspection is carried out in order to detect foreign objects that may threaten the user and lead to violations of the functioning of the product. The frequency of the current inspection is set by the owner taking into account the operating conditions. If you do not have sufficient technical knowledge and skills to conduct such inspections, we recommend you to contact the authorized specialists of the manufacturer in order to obtain advice.

Every three months, a scheduled inspection should be carried out, which primarily concerns the foundation part, load-bearing elements and connection nodes of elements (their integrity and degree of deterioration).

The main annual inspection must be carried out annually by authorised specialists of the manufacturer. During the inspection, the technical condition of the equipment shall be assessed for compliance with safety requirements. The degree of deterioration and damage to wooden elements and their ability to withstand the applied loads, damage, corrosion of metal elements and the impact of these factors on the safety of the product are determined. The inspection also helps to identify the impact of repairs, if any, on the safety of the equipment.

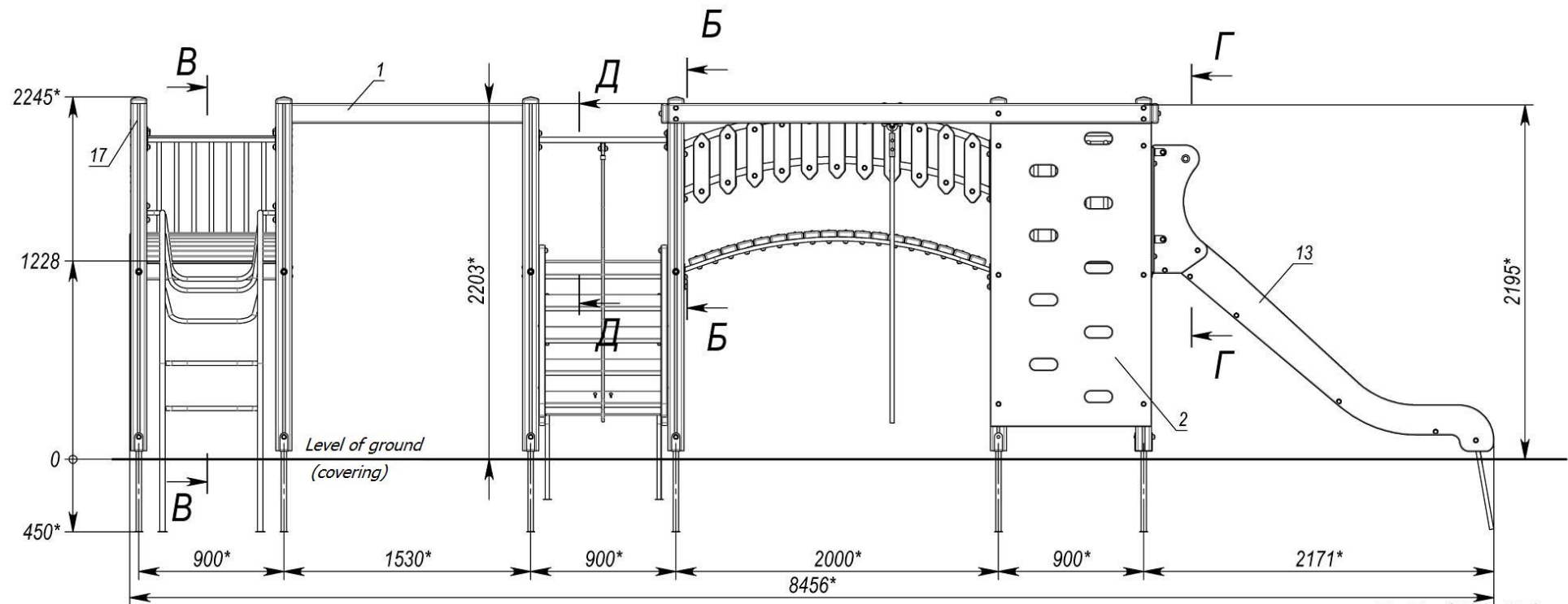
Based on the results of the inspection, a maintenance procedure is carried out to eliminate the identified discrepancies in the product's operation. This procedure includes assessing the condition of parts and assemblies, replacing worn parts, and restoring the integrity of protective coatings. The results of the inspections, as well as the procedures carried out as a result of the inspection and maintenance of the product must be properly documented in the Registration Journal, which is an integral part of this passport. The owner of the product must keep the acts of maintenance of the product, acts of repair work done.

Appendix



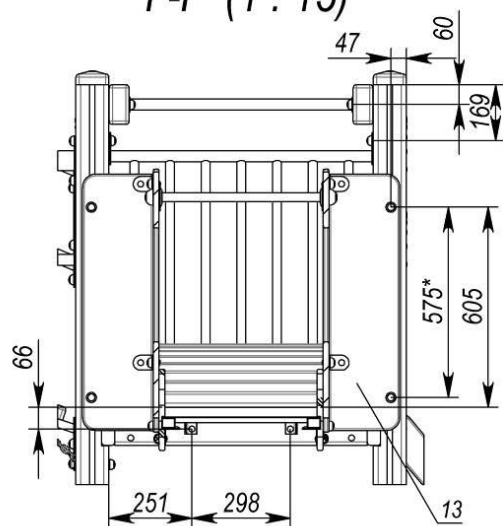
For GOST 11473 screws, drill holes with a diameter of 4...5 mm at site,
for M8 GOST 7802 bolts, drill holes with a diameter of 10 mm at site.

Pos.	Name	Weight, kg	Q-ty
1	Monkey bar 1.63 m	25	2
2	Gymnastic part of PC	140	1
3	Radial bridge 900-th assembly		2
4	Chain bridge assembly	63	1
5	Straight bridge assembly	59	1
6	Brace rod assembly	2	6
7	Ascent assembly	19	1
8	Ascent 1 m assembly	37	1
9	Brace rod assembly with rope	3	1
10	Fence 0.8 m	11	5
11	Small handle assembly		4
12	Arch ladder 1.2m assembly	22	1
13	Slide 1.2 m	54	1
14	Tower 1.2 m 1x1	75	4
15	Bridge railings assembly	18	4
16	Metal grate assembly	27	1
17	Tower 1.2 m 1x1	75	1

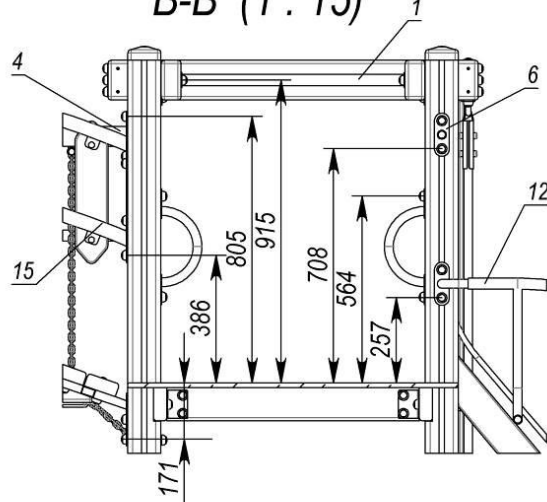


Д-Д (1 : 15)

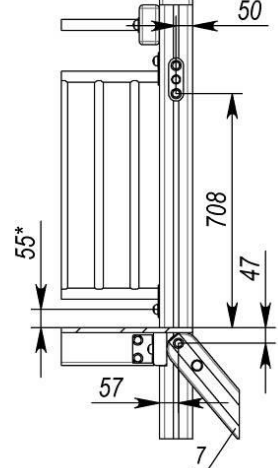
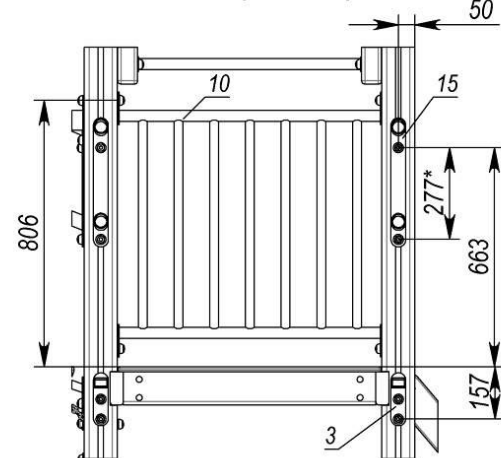
Г-Г (1 : 15)

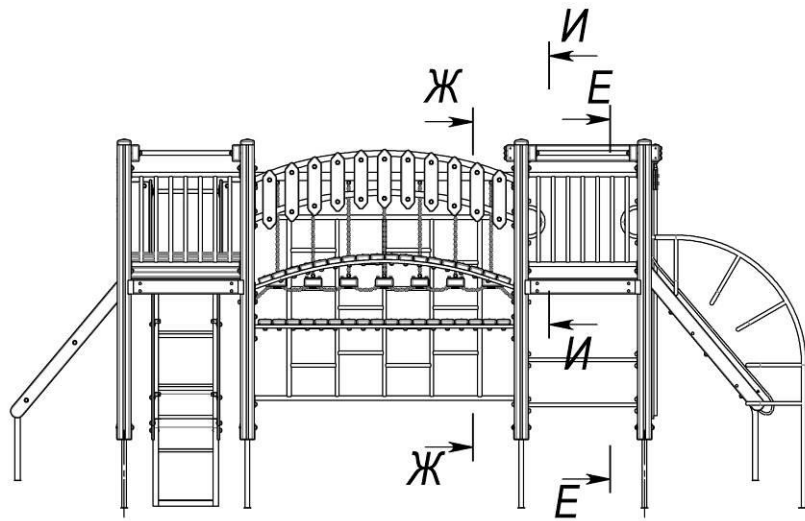


В-В (1 : 15)

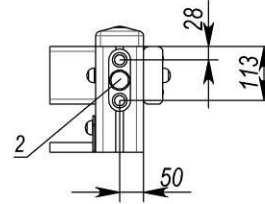


Б-Б (1 : 15)

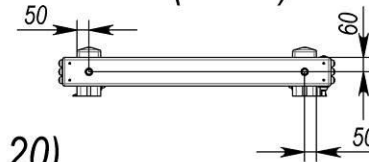




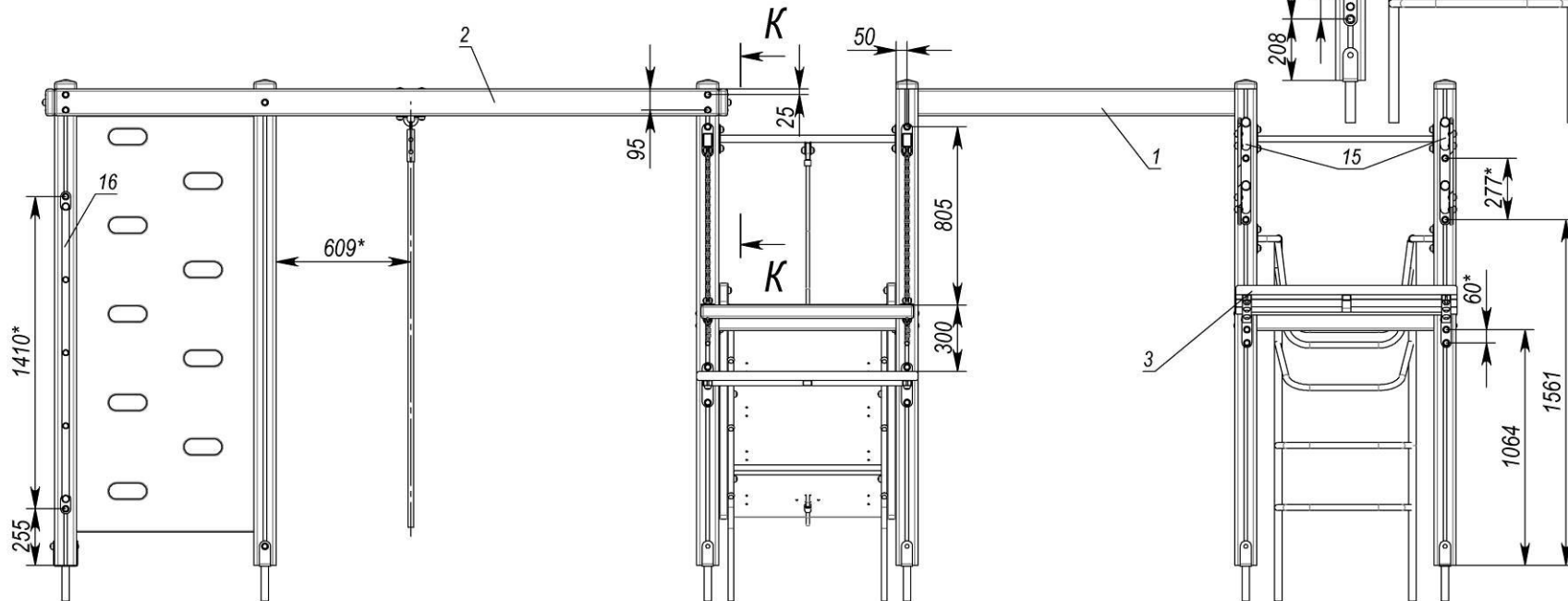
И-И (1:10)



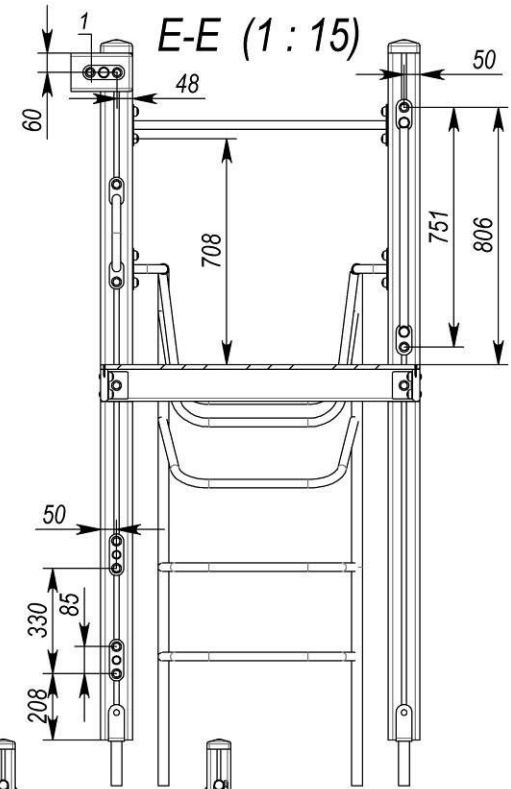
К-К (1:20)



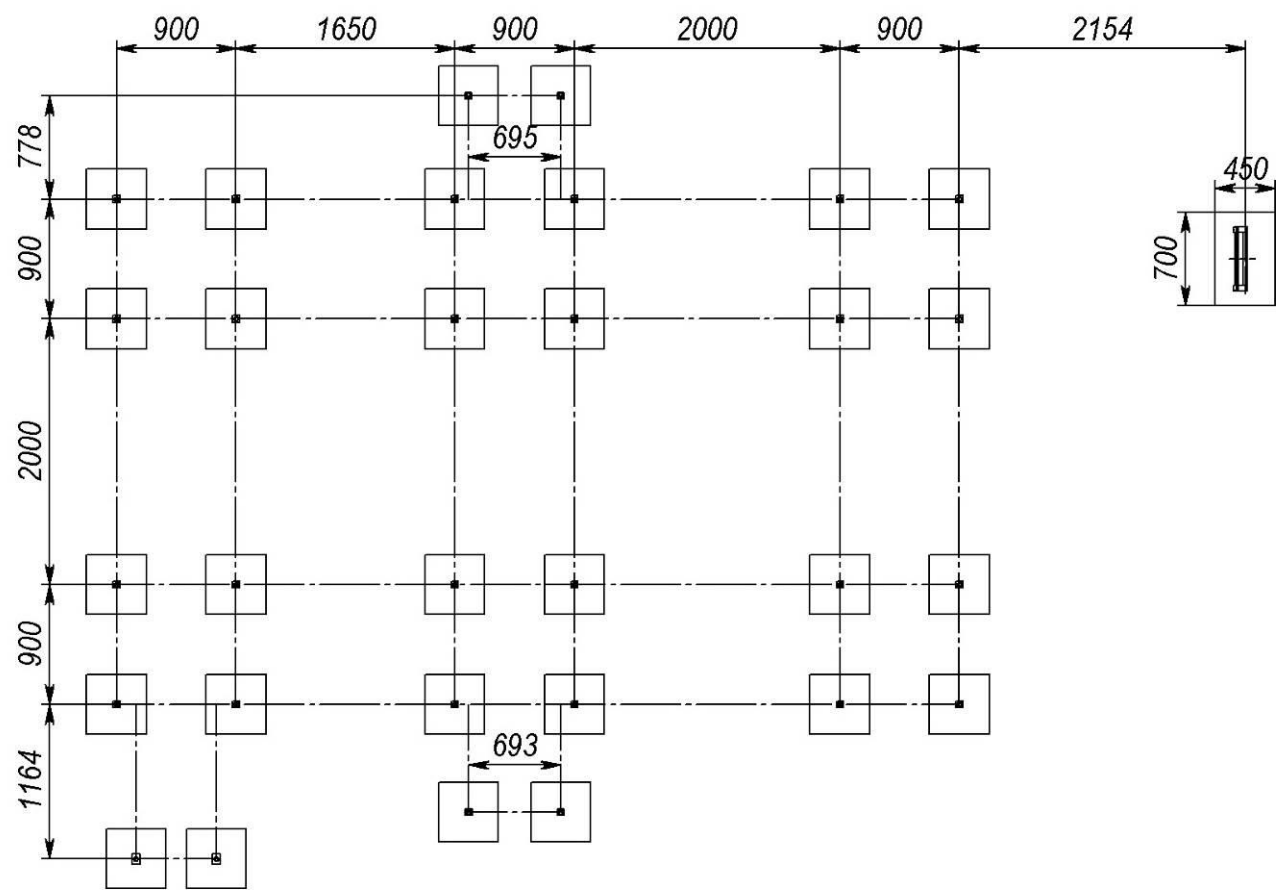
Ж-Ж (1:20)



Е-Е (1:15)



Layout scheme of foundation



Safety zone

