

interatletika™

PRODUCTION AND SALE OF PLAYGROUND AND OUTDOOR
EQUIPMENT

Customer support:

☎ +38 095 273 81 53

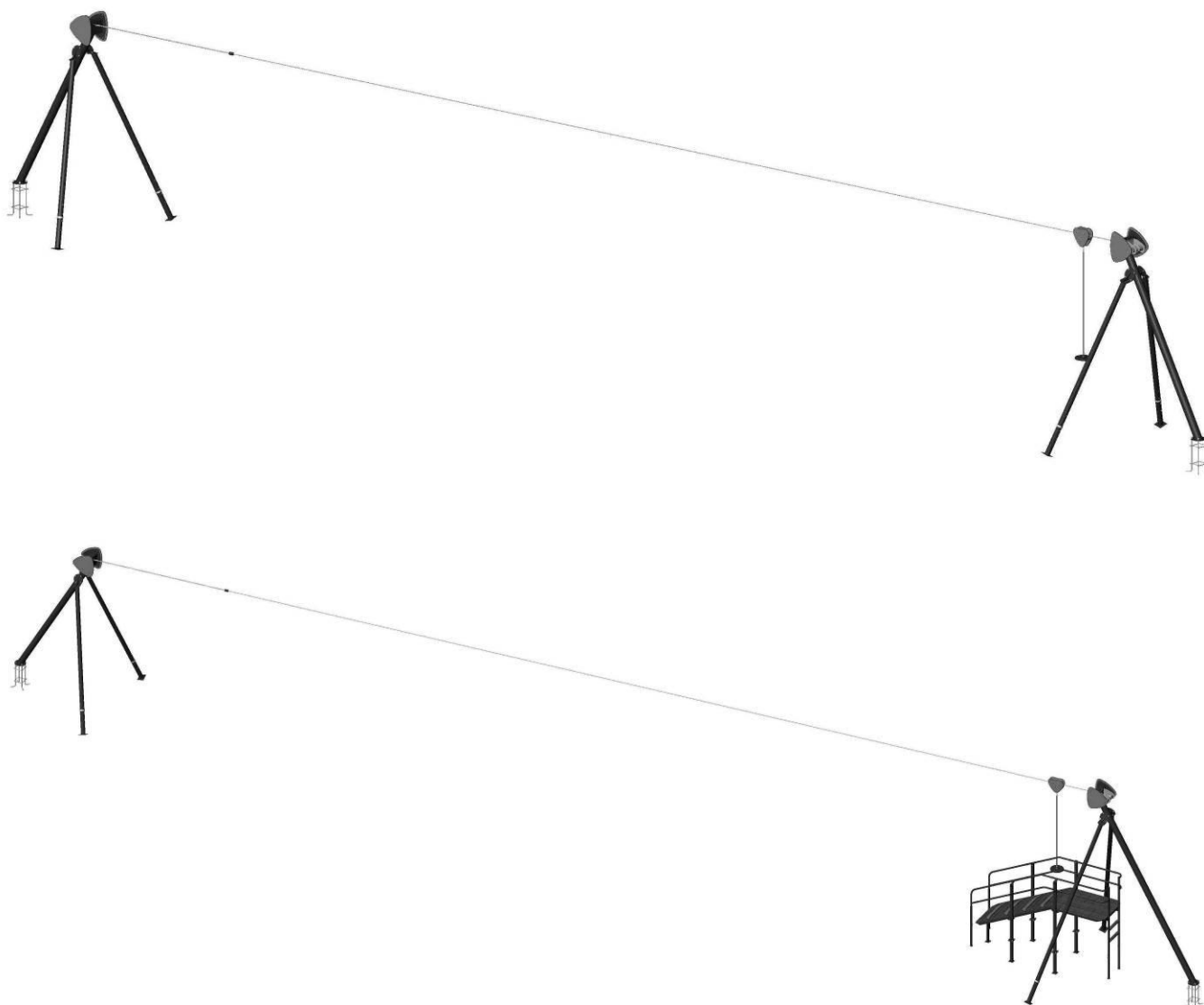
play.interatletika.com

✉ export.team@interatletika.com

LK817 - Ropeway Zipline

LK817-P - Ropeway Zipline with platform

DATA SHEET



CONTENT

1. GENERAL INFORMATION	3
2. TECHNICAL DATA	3
3. COMPLETENESS	3
4. CERTIFICATE OF ACCEPTANCE, PACKAGING AND CONSERVATION	3
5. INFORMATION ON STORAGE, TRANSPORTATION AND DISPOSAL	3
6. INSPECTION AND TESTING	4
7. PRODUCT MAINTENANCE	4
8. INSTRUCTION FOR SAFE USE	Ошибка! Закладка не определена.
9. INSTALLATION INSTRUCTIONS	4

FOR NOTES

This image shows a full page of blank white paper with horizontal ruling lines. The lines are evenly spaced and run across the width of the page, providing a template for writing or drawing. There are no margins, text, or other markings present.

1. GENERAL INFORMATION

1.1 Article number _____.

1.2 Name _____.

1.3 Manufacturer LLC «Company Sporttehnika», Ukraine, city of Chernihiv, Ushynsky St., 24.

1.4 Serial number and production date: _____, «____» _____ 20__ year.

1.5 Produced in accordance with regulatory documents: TC AT 28.9-31597759-001:2012.

1.6 The product is designed for children and creates conditions for:

- physical development of the child;

- development of coordination of movements, overcoming fear of heights, development of agility and courage, a sense of teamwork in team games.

The manufacturer can make changes to the product design to improve its performance, change the design, etc.

This document may not contain a description of such changes, but applies to the following modified products.

2. TECHNICAL DATA

	LK817	LK817-P
Length, mm	26747	27324
Width, mm	2205	2956
Height, mm	2953	3953
Height of fall, mm	650	1580
Weight, kg	319.2	539
Age range, years	from 3 years	from 3 years
Weight limits, kg	Up to 100	Up to 100

3. COMPLETENESS

Complete set of the product is given in the «Complete set information» and «Complete set of metalware», supplied with the product.

4. CERTIFICATE OF ACCEPTANCE, PACKAGING AND CONSERVATION

Product _____, serial number _____ complies with regulatory documents TC AT 28.9-31597759-001:2012 and recognised as serviceable.

OTC mark: «____» _____ 20__ year.

Date

Full name

P.S.

Packed by LLC «Company Sporttehnika» in accordance with the requirements of regulatory documents.

«____» _____ 20__ year.

Date of packing

Packed by _____

Full name

Signature

Information on conservation and deconservation during operation

Conservation date	Conservation method	Conservation period	Deconservation date	Name of the company (organisation)	Position, full name	Signature

5. INFORMATION ON STORAGE, TRANSPORTATION AND DISPOSAL

The product is transported in the manufacturer's packaging by any means of transport that ensures its safety and protection from external factors (rain, snow, sunlight, water, high humidity, etc.).

Information about transportation

Date		Brand, state number of the ca/trailer	Position, full name	Signature
Departure	Arrival			

Before installation, store the product in the original packaging in dry, closed rooms with natural air ventilation.

If it is necessary to transport the product to another location after use, it is recommended to use the manufacturer's packaging.

If long-term storage of the product is required, the following storage rules must be observed (the list of conditions is not complete):

- place the product in a closed dry room with natural ventilation;

- protect the product from external factors (dust, water drops, etc.) with a large plastic bag, leaving space for free air circulation;

- take other measures to preserve the appearance and characteristics of the product during storage.

When removing the product from storage and preparing for installation, follow the next recommendations:

- remove the product from the packaging material (polyethylene, cardboard, other packaging materials);

- remove dust and other contaminants from the surface of the product;

- check completeness and absence of parts damage.

Storage information

Date		Product storage conditions	Full name	Signature
Putting into storage	Removal from storage			

After the end of the equipment's service life, the buyer independently determines the procedure for its use. If you decide to recycle, contact the seller or specialized organizations.

The equipment does not contain harmful impurities and materials that can harm your health and is not subject to special recycling.

6. INSPECTION AND TESTING

Before starting the operation of the product, it is visually inspected, checked: the integrity of paint coating, fasteners and structural strength.

If there are concrete support parts of the product, make sure that they are securely fixed and do not move.

Check that the equipment and site are free from packaging materials, construction debris and other foreign objects.

Check the proper condition of the shock-absorbing surfaces on the playground.

7. PRODUCT MAINTENANCE

Timely maintenance of the product is the responsibility of the buyer (or a responsible person) and includes:

1. Daily inspection - before using the product, check its performance, visual inspection for the absence of breakdowns, damage, sharp edges on components and parts, structural integrity, strength of wooden structures and element connection points, absence of unnecessary objects on the platforms. If the product is damaged, fully or partially inoperable, or otherwise defective, it is prohibited to use the product.

2. Scheduled inspection is carried out every three months.

It involves a detailed visual and operational inspection of the operation and stability of the equipment, especially with regard to any wear.

In the process of inspection, they determine:

- cleanliness and appearance of the surface of the playground and equipment;
- maintaining distances from parts of the equipment to the surface of the playground;
- absence of protruding parts of the foundations;
- absence of defects/malfunctions of equipment elements;
- wear of moving parts;
- structural integrity of equipment.

Special attention should be paid to hidden and inaccessible parts of the equipment.

3. Annual inspection is held every 12 months to establish the overall safety level of the equipment.

In the process of visual and functional inspection it is determined:

- structural stability;
- integrity of the foundation;
- strength of units of item elements connection;
- wear of sliding surfaces and grips.

Special attention should be given to:

- assessing the impact of weather events;
- the presence of rot or corrosion;
- parts that are closed to access during the entire period of operation.

The results of the inspection, repair or replacement of equipment components must be recorded in the maintenance record sheet.

Maintenance recording

Date and type of inspection	Name of the work done	Remarks on the technical condition	Position, full name, signature of the responsible person

9. INSTRUCTION FOR SAFE USE

WARNING! Children are allowed on the equipment only under adult control.

Before operating the product, conduct a visual inspection, check the fasteners and structural strength.

The equipment is used on the playgrounds without constant supervision by operating personnel. In order to ensure the safe operation of the product, the owner must conduct a daily visual inspection. If malfunctions are detected during the inspection, they must be immediately eliminated, and if this is not possible, the equipment must be closed

for users.

There should not be any foreign objects, sharp elements, protrusions on the surface of the playground.

Under playground equipment with a free-fall height of more than 600 mm, an impact-absorbing coating must be provided over the entire fall zone. With a free fall height of less than 1000 mm, a turf shock-absorbing coating is allowed.

Examples of impact-absorbing coatings

Material ¹	Description	Minimal depth, mm	Height of fall, mm
Turf			≤1000
Tree bark	grain size 20-80 mm	200	≤2000
		300	≤3000
Sawdust	grain size 5-30 mm	200	≤2000
		300	≤3000
Sand ²	grain size 0,2-2 mm	200	≤2000
		300	≤3000
Gravel ²	grain size 2-8 mm	200	≤2000
		300	≤3000
Other materials ³	Characteristics of the tested material		Critical height of fall obtained during testing
<ol style="list-style-type: none">1. Materials specially prepared for playgrounds.2. There should not be any clay inclusions.3. The grain size is obtained by sieving through a sieve as in EN933-1.			

WARNING! Operating the product without an impact-absorbing coating may result to serious injury during falling down.

Playground surface materials with low impact-absorbing features should only be used outside the fall zone.

Product use:

- it is recommended to show or tell children how to use the equipment;
- during use it is recommended to hold onto handrails, railings, handles;
- it is forbidden to use until the completion of its full and final installation;
- it is forbidden to use by users of a different age and weight category;
- before using clear the surface from foreign objects, sharp elements, protrusions;
- it is forbidden to move the product elements which are not intended for this;
- do not use in difficult weather conditions (ice, snow, rain, hail, strong wind, etc.), in which there is a possibility of injury to the child.

The manufacturer is not responsible for the consequences:

- poor quality and improper installation of the product;
- use of low-quality materials and inadequate qualifications of personnel during installation of the product;
- use of the product earlier than the period necessary to fix the product in the soil or other material;
- design changes to the product that caused injury;
- lack of proper adult control;
- violation of age and weight restrictions by users;
- damage to the product due to improper storage, installation or use of the product for purposes other than those intended.

10. INSTALLATION INSTRUCTIONS

Installation of the product can be carried out by the manufacturer, service centre or other legal entities and individuals who have the necessary material and technical base and qualifications.

The product is installed on a prepared flat area, free from debris, trees and other obstacles that interfere with installation (when installed in winter, the area shall be additionally free from snow). The required size of the site is determined by the fall zone of the equipment. When installing in winter on natural ground, it is recommended to choose a site with compacted soil in the area of foundation placement.

The height difference of the prepared site should be:

- a) no more than 50 mm for natural substrates, including substrates with subsequent shock-absorbing coating.
- b) no more than 10 mm for hard substrates (asphalt, concrete), including substrates with subsequent application of a synthetic protective coating.

Before starting the installation, you must:

- study the documentation supplied with the product;
- check the completeness in accordance with the documents supplied with the product;
- remove the original packaging from the component part;
- comply with safety requirements.

WARNING! The presence and participation of children during the installation of the product is not

allowed.

Install the product in stages, following the instructions in the appendix.

Table №1 – Landing zone for LK817, LK817-P:

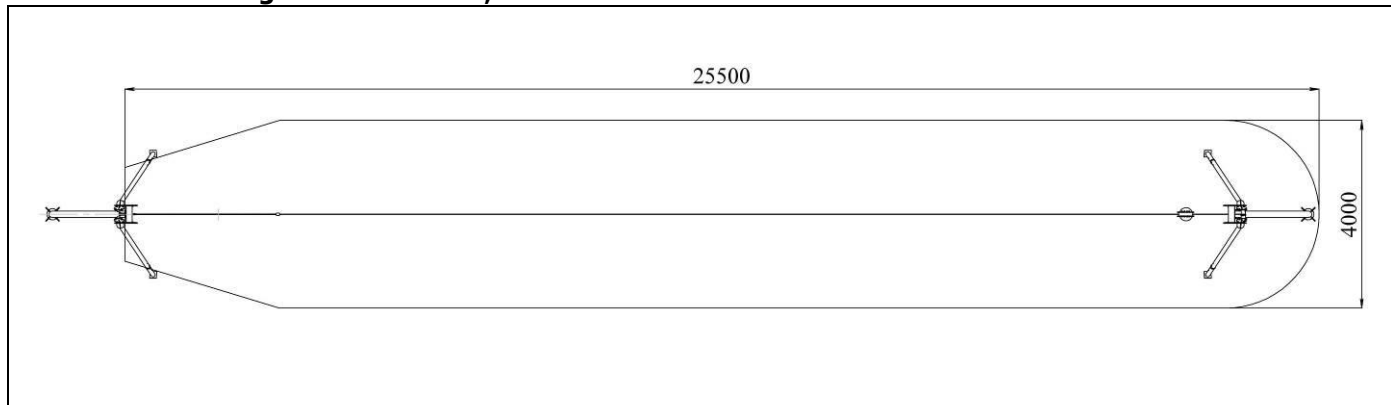
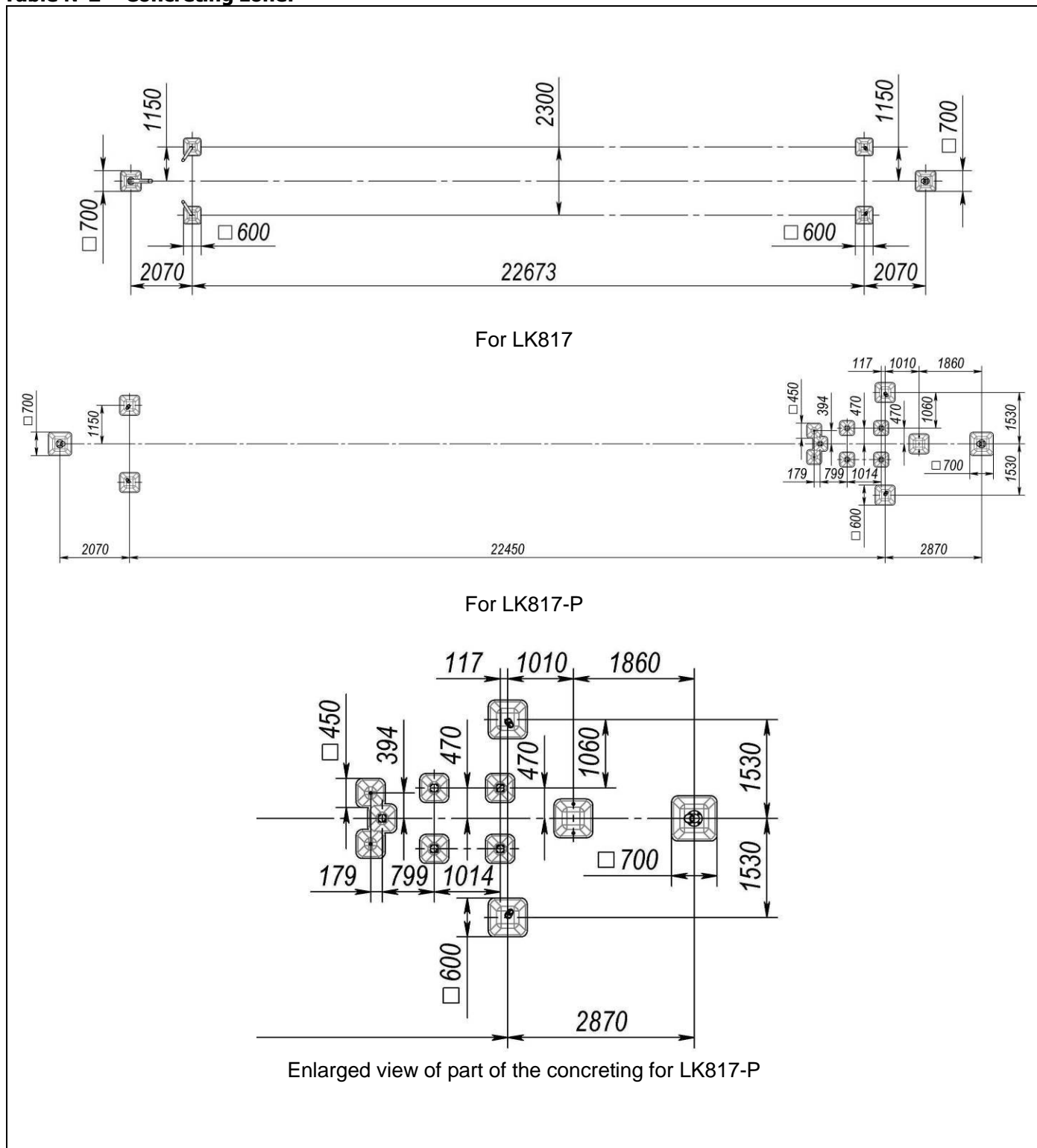
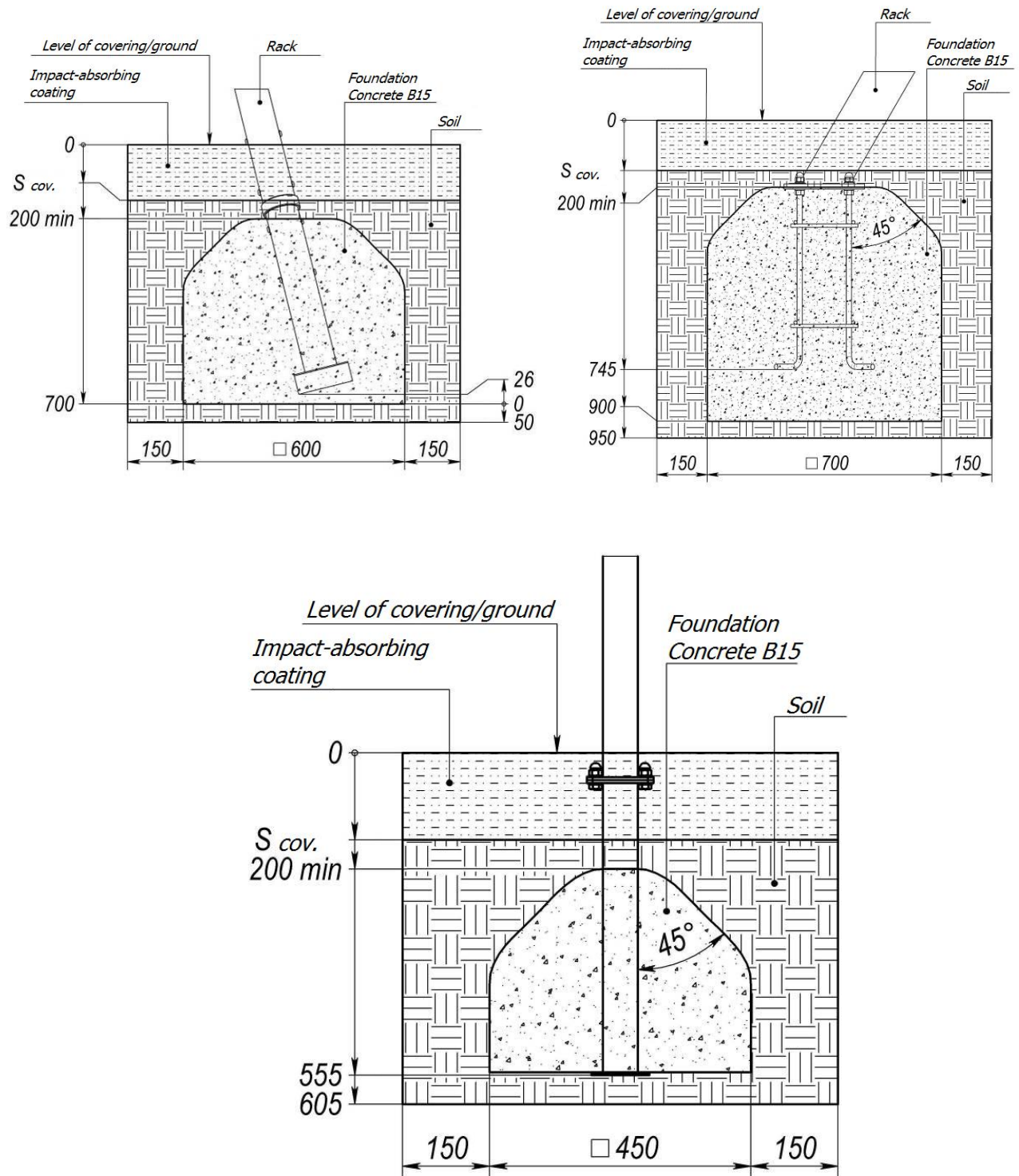
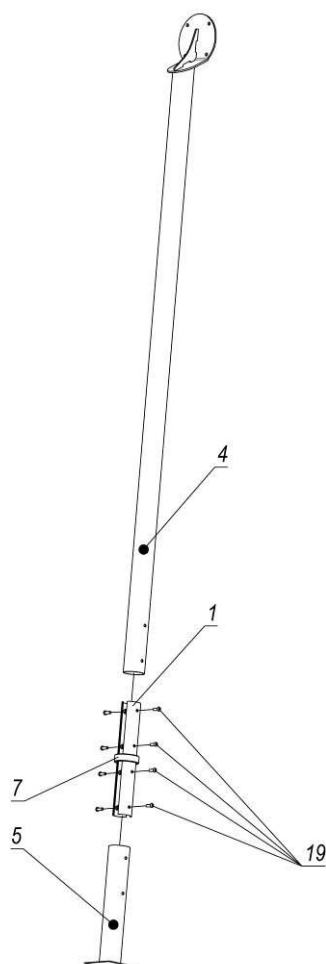


Table №2 – Concreting zone:

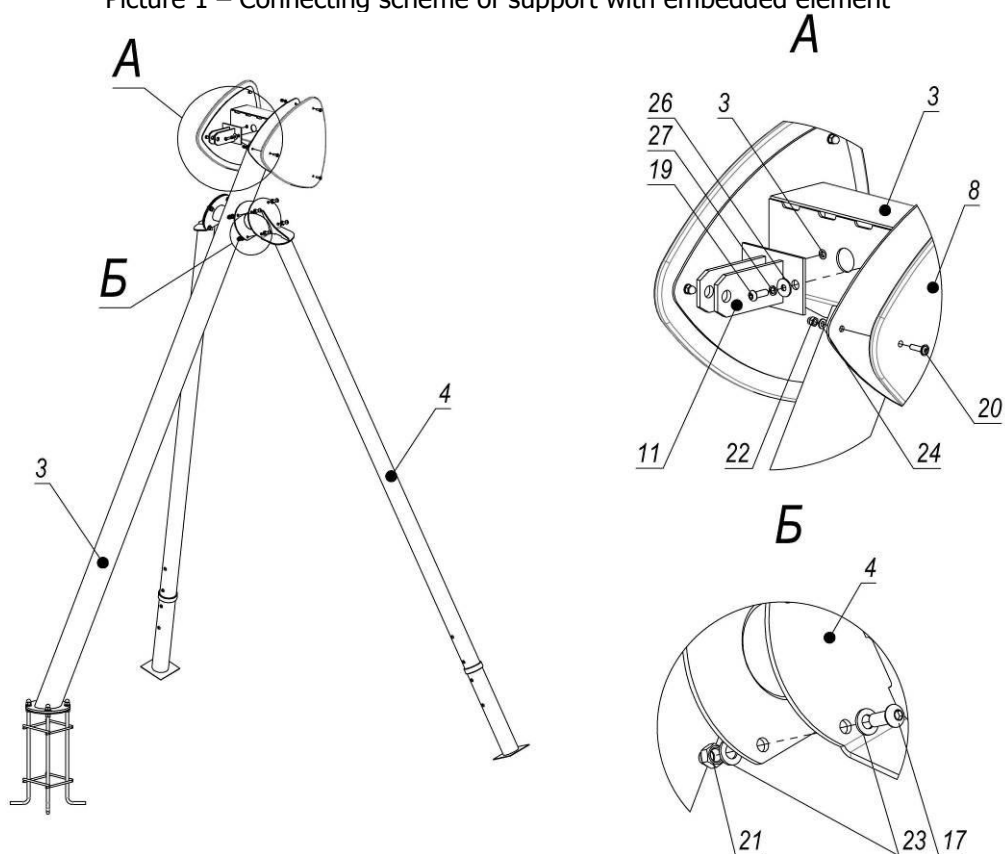


Concreting schemes

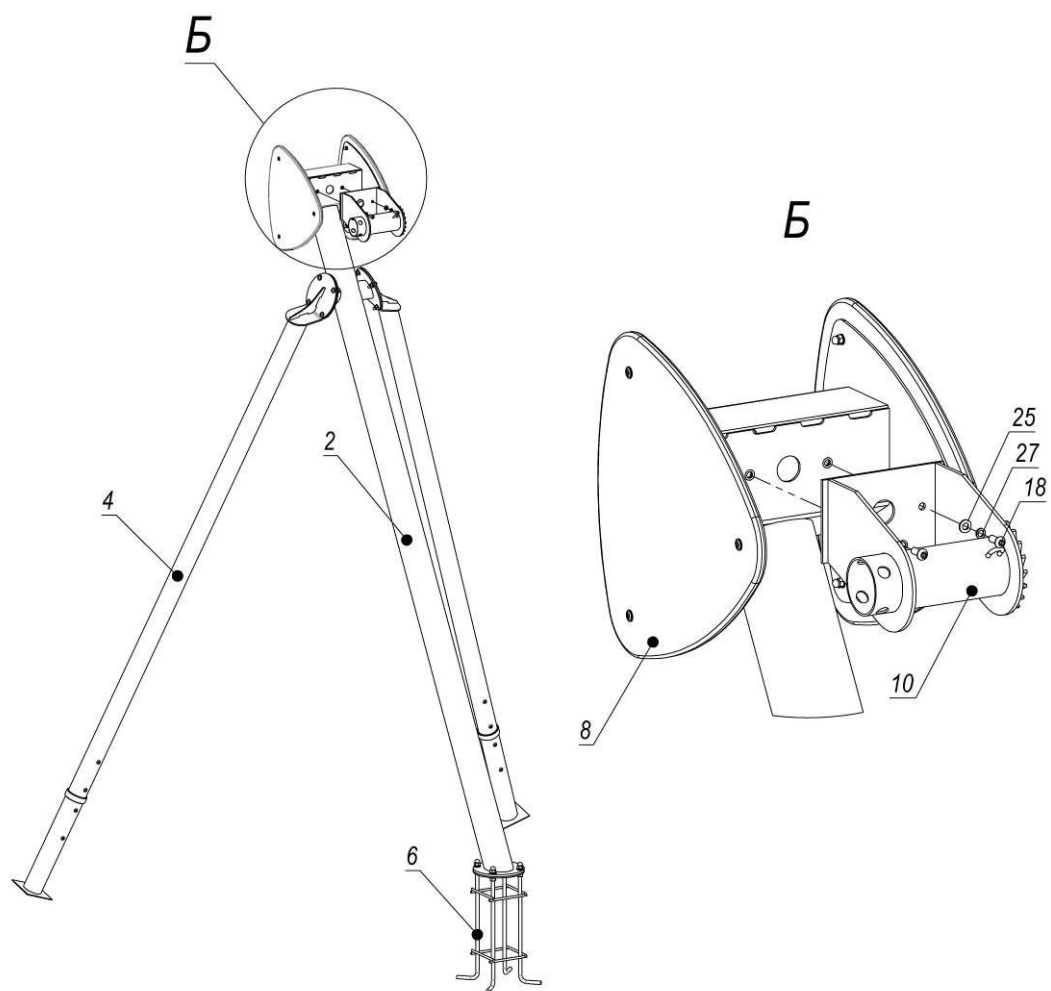




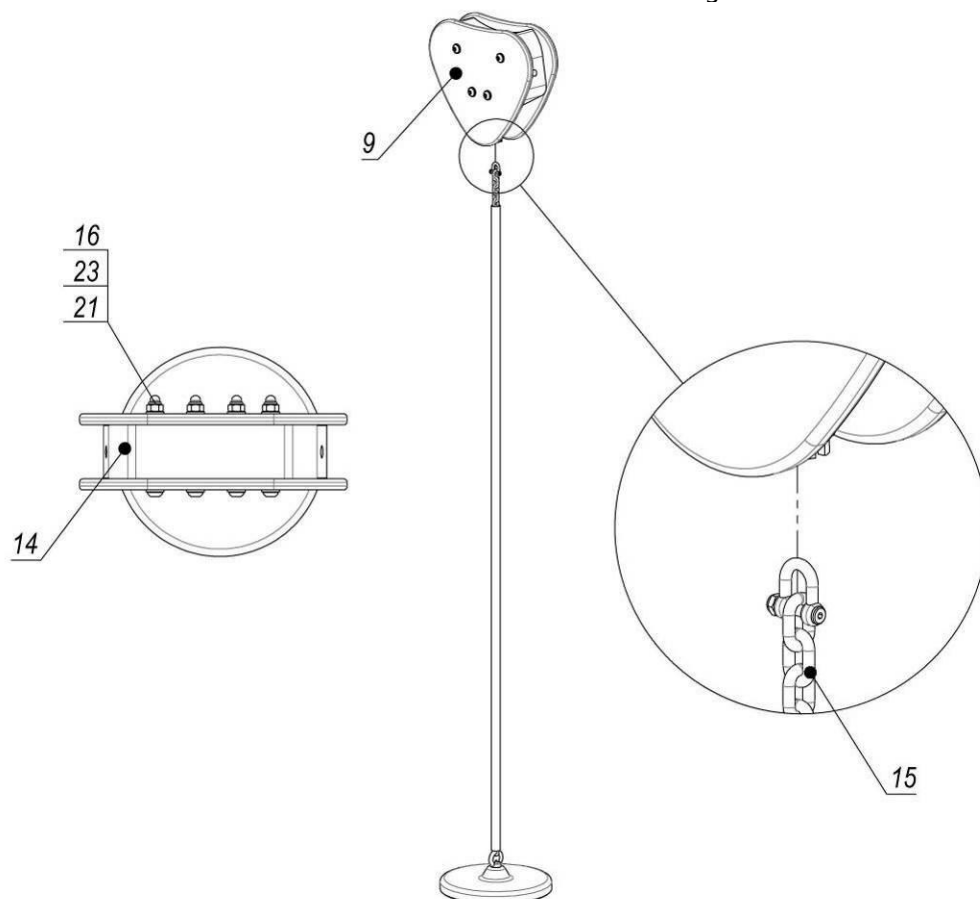
Picture 1 – Connecting scheme of support with embedded element



Picture 2 – Assembly scheme of frame



Picture 3 – Installation scheme of tensioning device

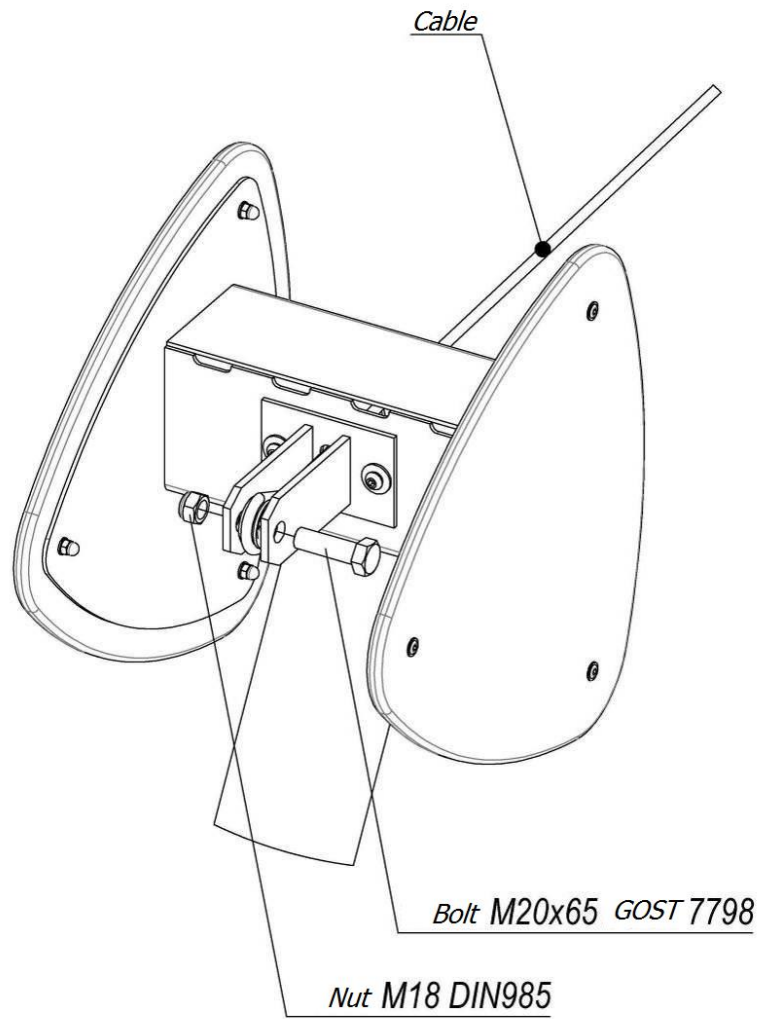


Picture 4 – Assembly scheme of bogey with suspension

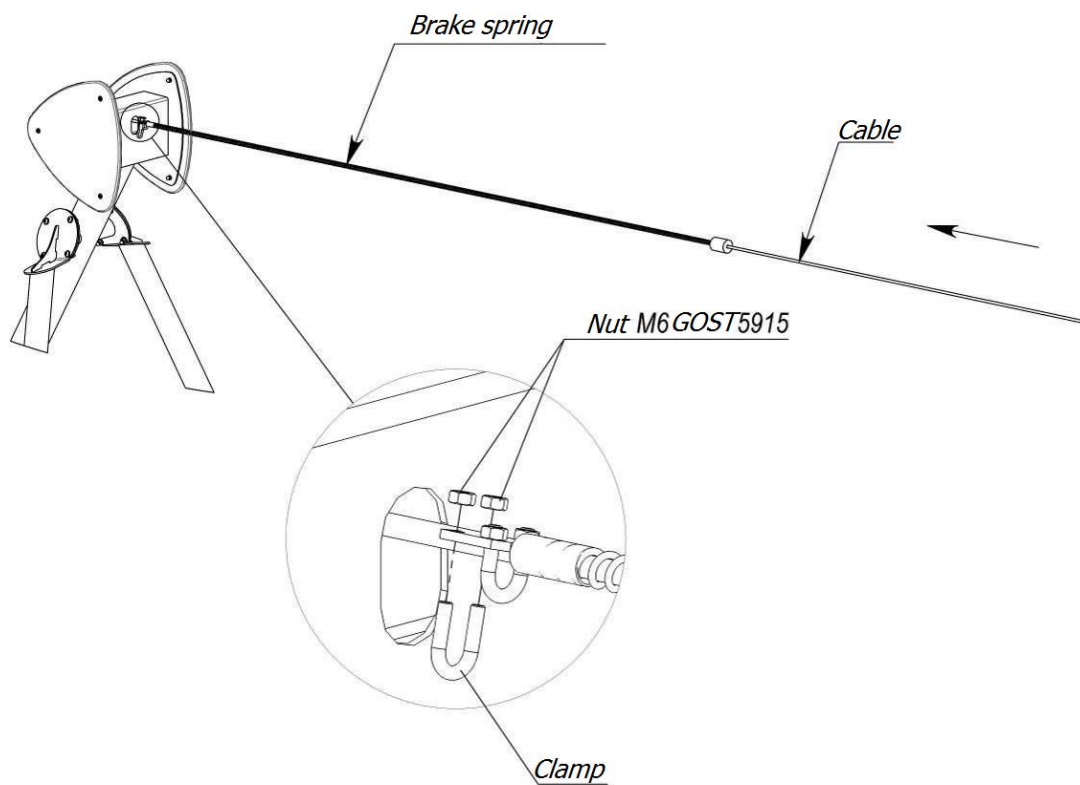
Table №1 – Completeness:

<i>Pos.</i>	<i>Name</i>	<i>Weight, kg</i>	<i>Q-ty</i>
1	Connector	1	8
2	Middle rack	63	1
3	Middle rack	63	1
4	Support	24	4
5	Embedded element	5	4
6	Embedded element	8	2
7	Spacer ring		4
8	Cover plate	3	4
9	Bogey cover plate	1	2
10	Cable tensioning device	6	1
11	Cable fastening	2	1
12	Cable with thimble		1
13	Brake spring		1
14	Bogey		1
15	Suspension with seat Monkey "Curve" KBT103.006.006.001 (Chain 2.5m)		1
16	Stud M12*120.A2-70 ISO7380 (half-round) stainless		4
17	Stud M12*30.A2-70 ISO7380 (half-round) stainless		16
18	Stud M10*25.A2-70 ISO7380 (half-round) stainless		2
19	Stud M10*30.A2-70 ISO7380 (half-round) stainless		34
20	Stud M8x30.A2-70 ISO7380-2 (press washer) stainless		12
21	Nut M12-A2 DIN986 (cap/lock)		20
22	Nut M8.A2-70 DIN1587 (cap nut) stainless		12
23	Washer 12-A2 DIN125 (flat)		40
24	Washer 8-A2 DIN125 (flat)		12
25	Washer 10-A2 DIN125 (flat)		2
26	Washer 10-A2 DIN9021 (enlarged)		2
27	Washer 10-A2, DIN7980 (spring) stainless		4

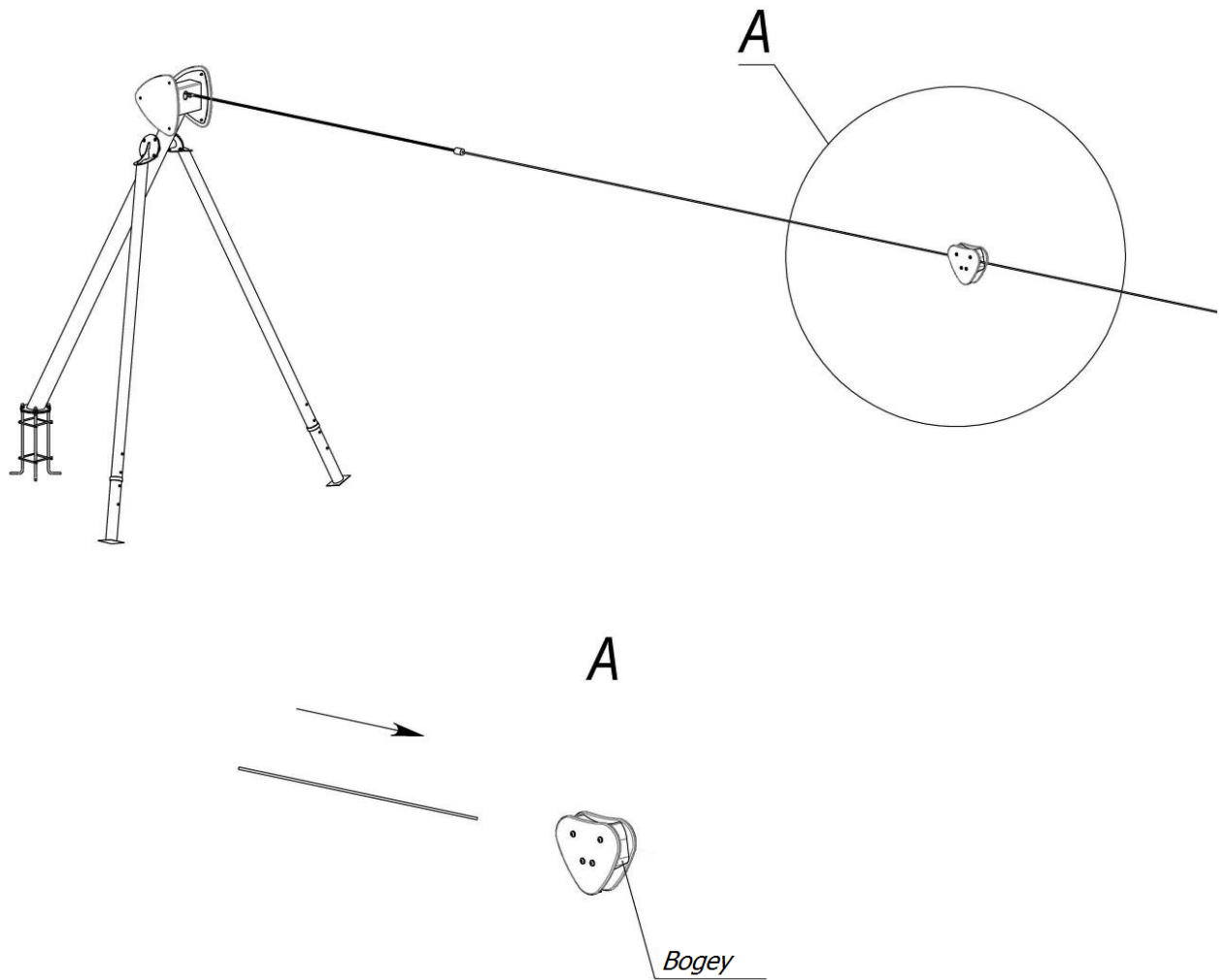
1. Insert and fasten the cable.



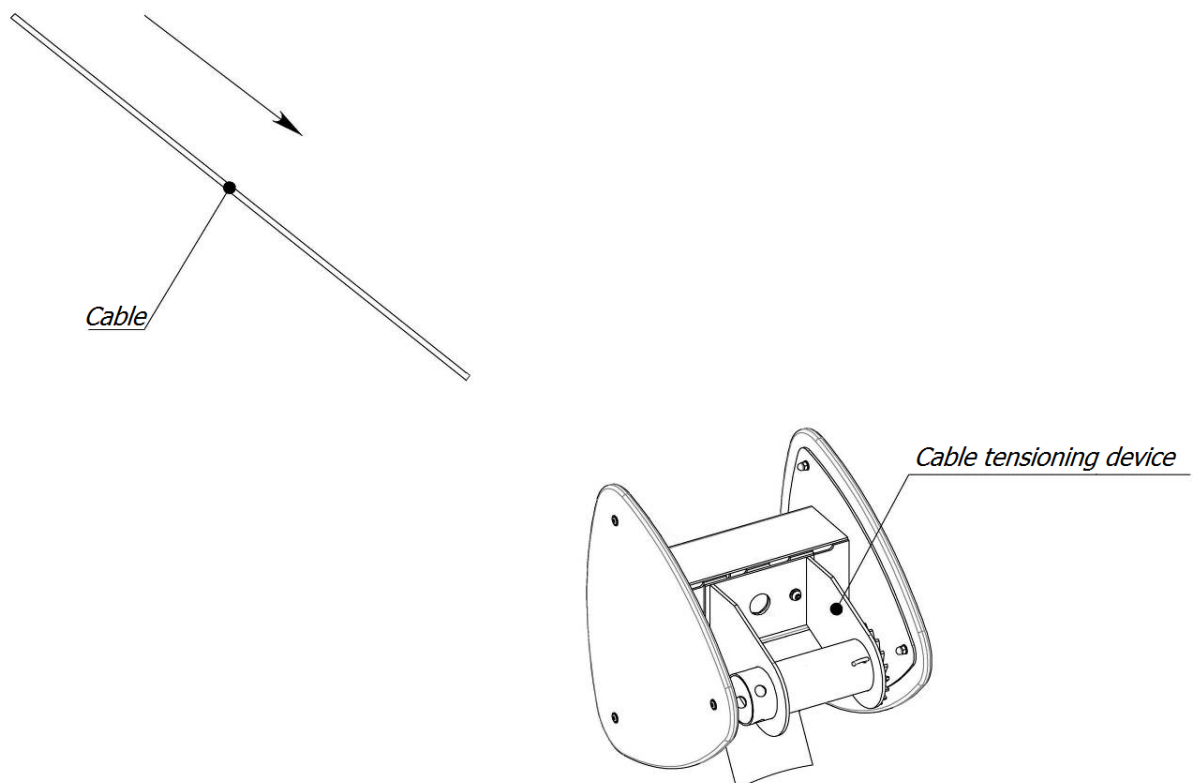
2. Install brake spring.



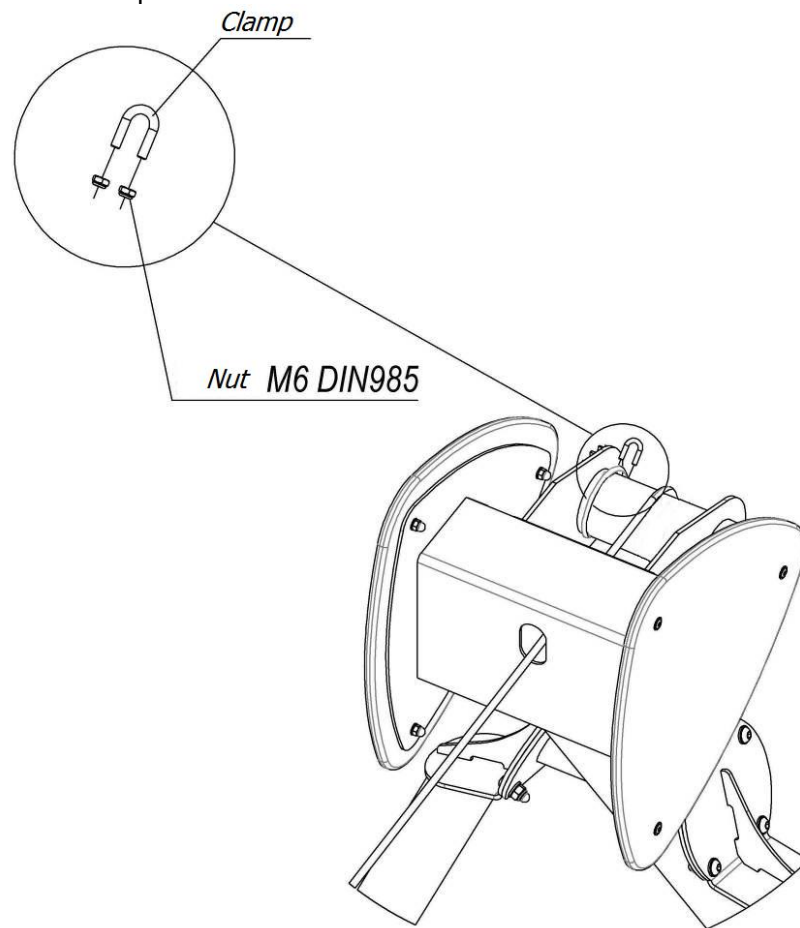
3. Insert cable into bogey.



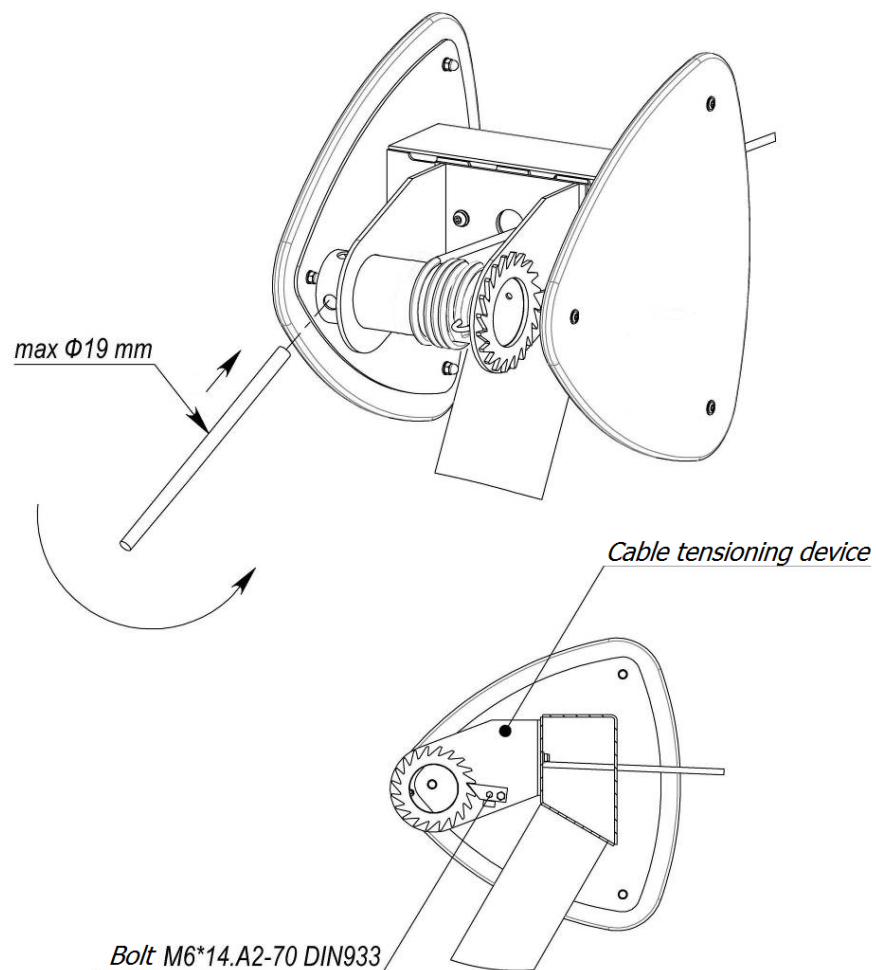
4. Pull the cable through the tensioning device.

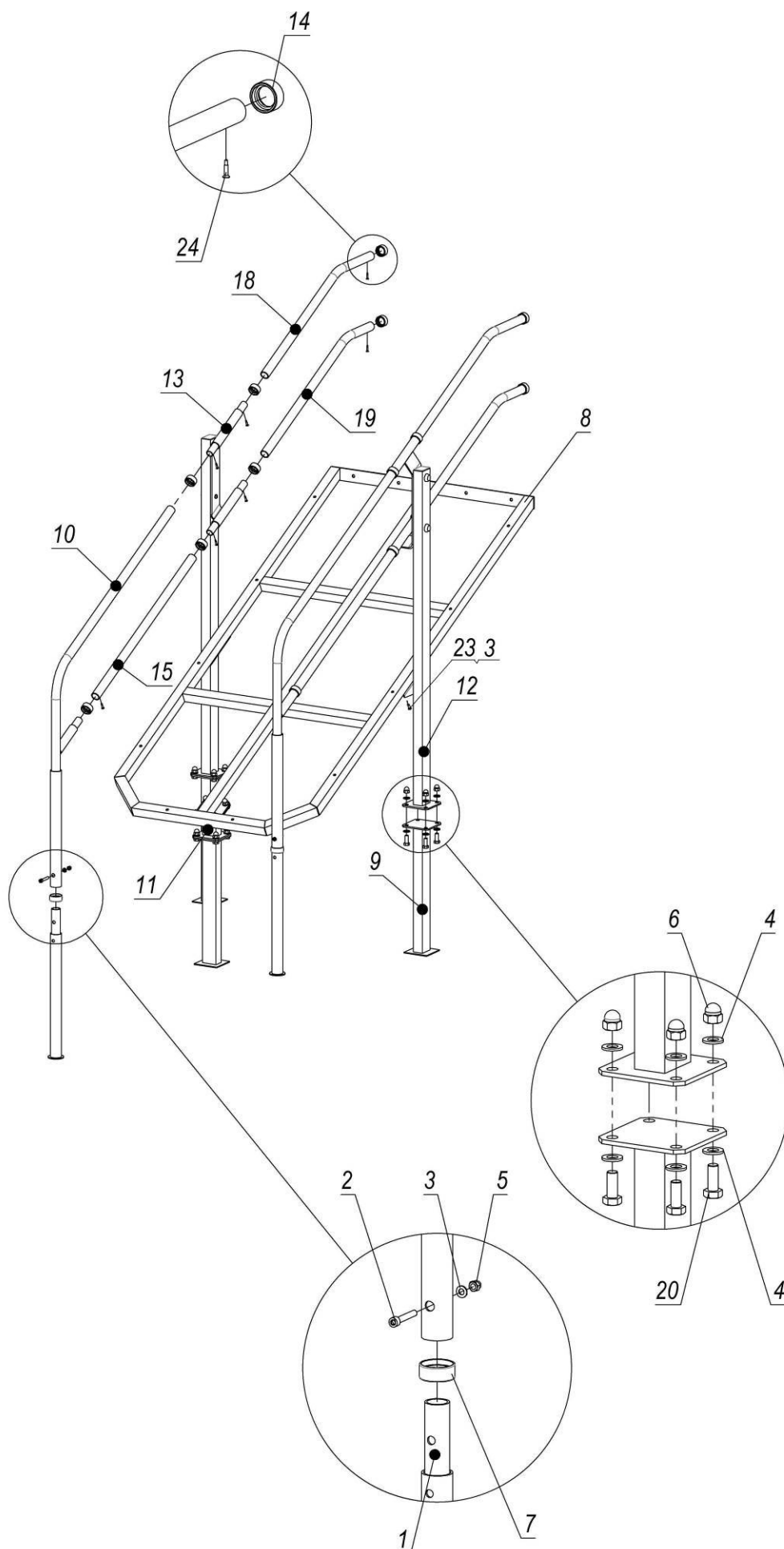


5. Fasten cable with clamp.

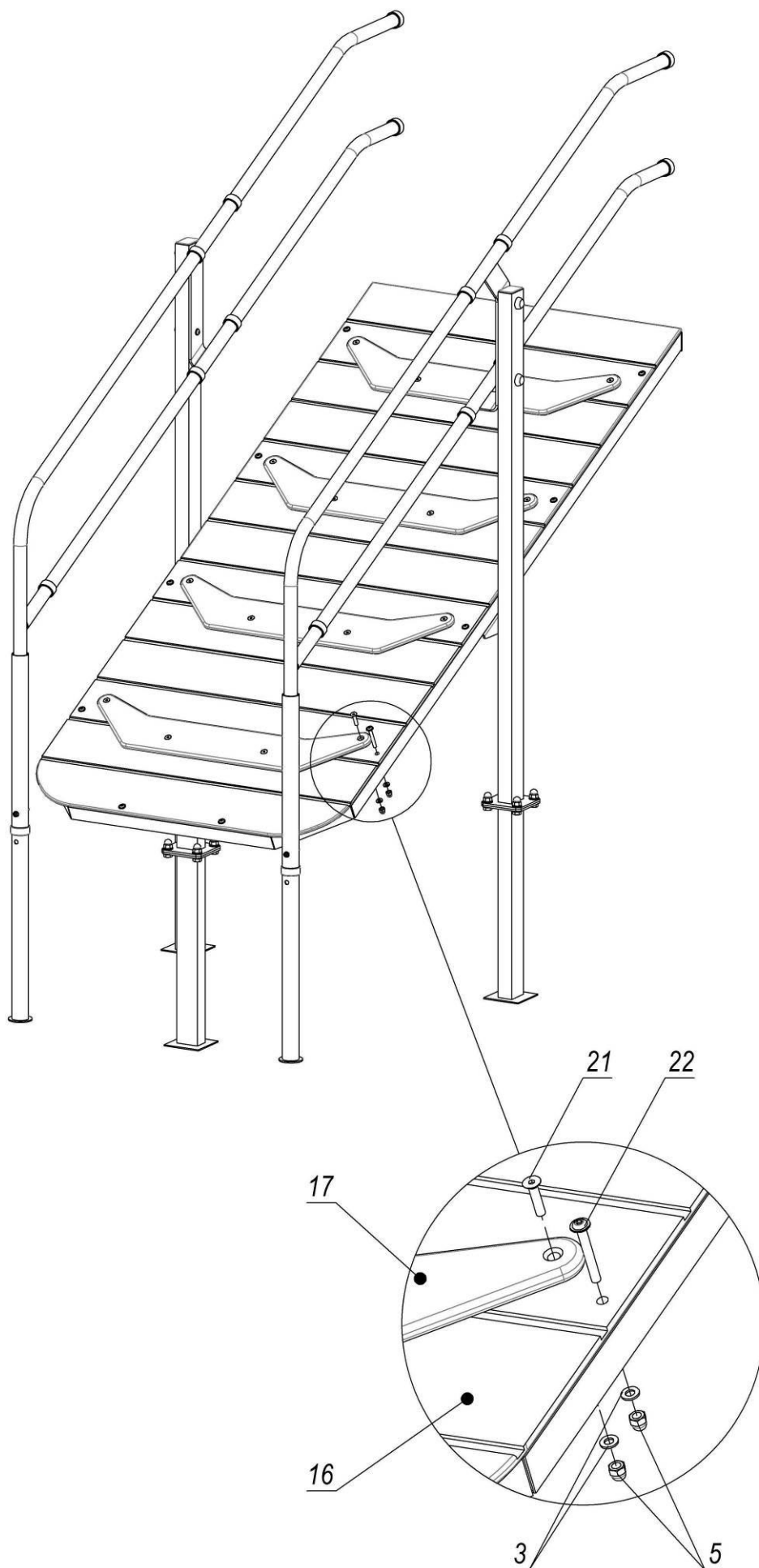


6. Tighten the cable and secure it with a bolt.





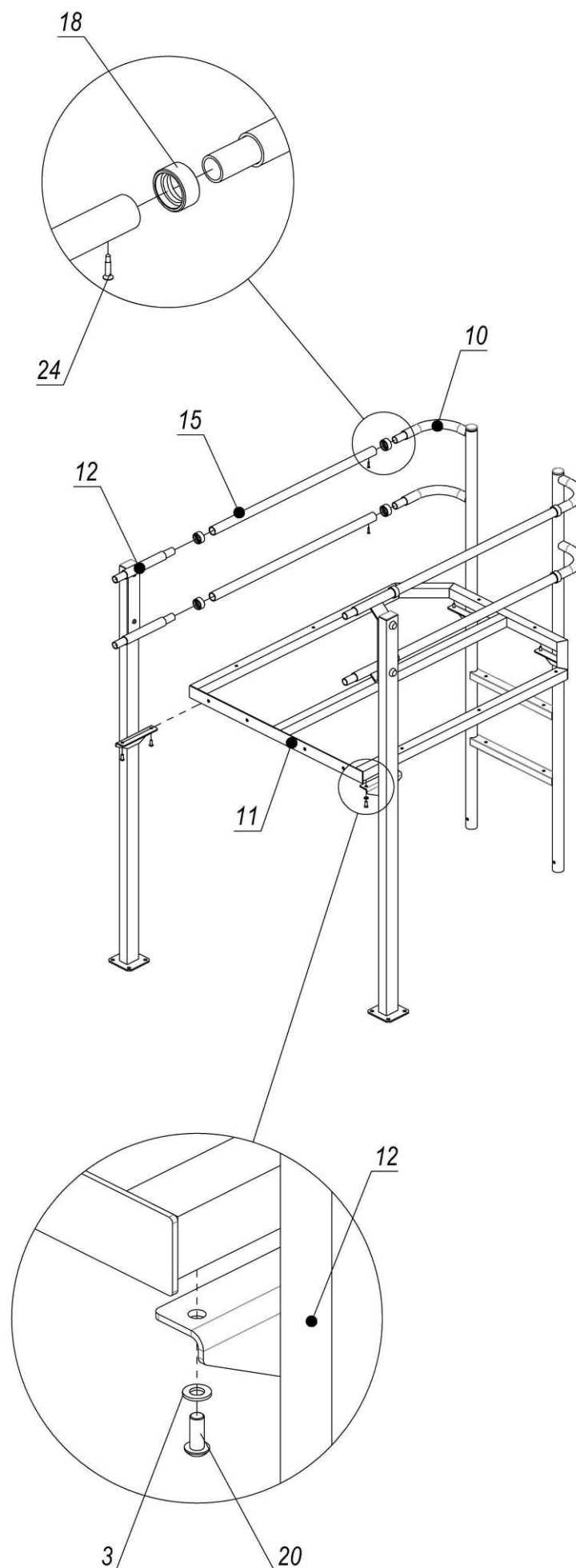
Picture 5 – Assembly scheme of frame



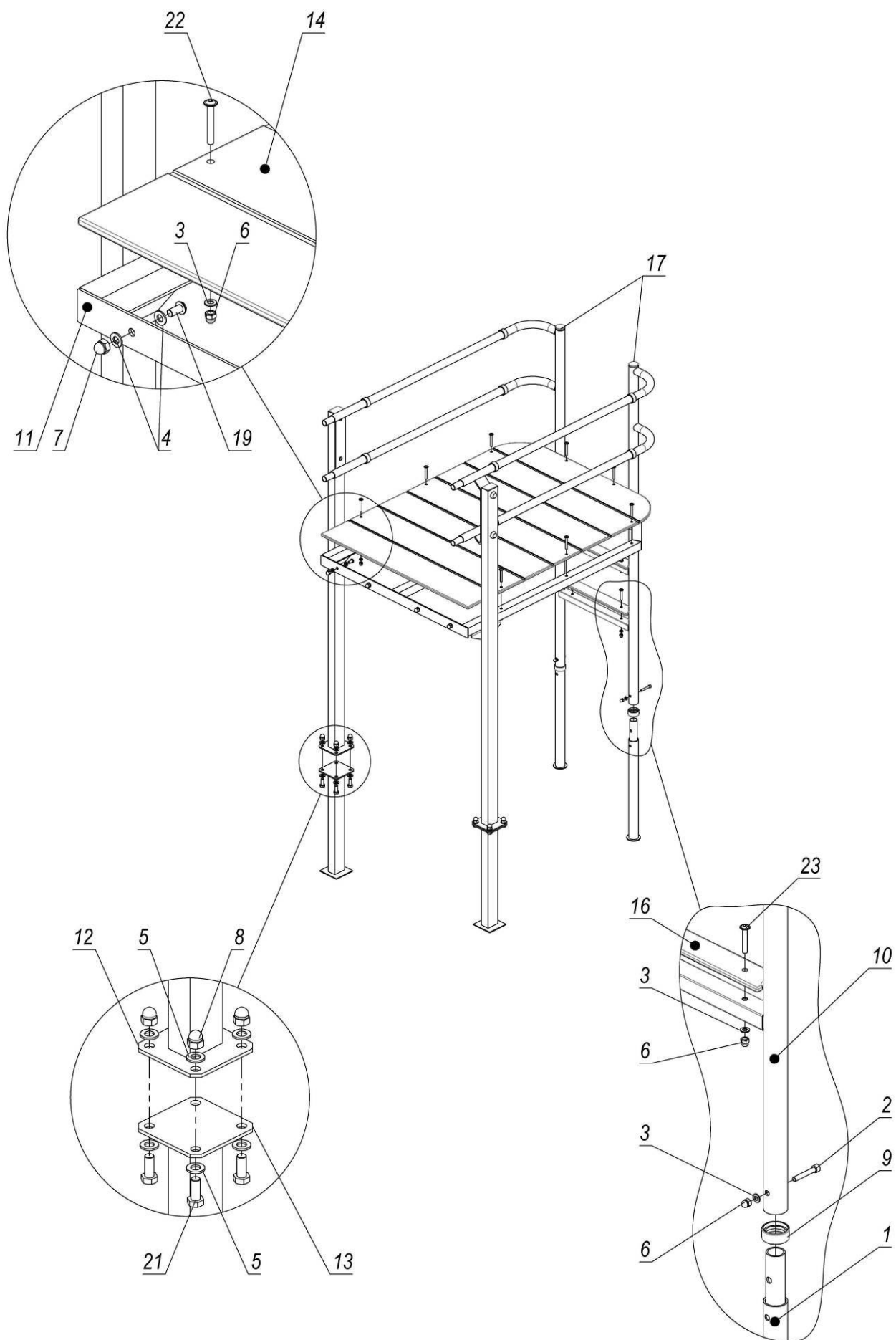
Picture 6 – Installation scheme of panels

Table №2 – Completeness:

<i>Pos.</i>	<i>Name</i>	<i>Weight, kg</i>	<i>Q-ty</i>
1	Handrail embedded element	2	2
2	Stud M8*50.A2-70 DIN912 (cyl.) stainless		2
3	Washer 8-A2 DIN125 (flat)		32
4	Washer 12-A2 DIN125 (flat)		32
5	Nut M8.A2-70 DIN1587 (cap nut) stainless		28
6	Nut M12.A2-70 DIN1587 (cap nut) stainless		16
7	Connecting bushing D42mm		2
8	Pallet	22	1
9	Embedded element	3	3
10	Railings bottom	5	2
11	Ascent foot	1	1
12	Railings support right	8	1
13	Railings support left	8	1
14	Connecting bushing		14
15	Straight handrail	2	2
16	Panel	25	1
17	Step		4
18	Railings tube	2	2
19	Railings tube	2	2
20	Bolt M12*30.A2-70, DIN933 (hexagonal full thread) stainless		16
21	Stud M8x35-A2 DIN7991 stainless		16
22	Stud M8x60-A2 ISO7380-2 (press washer) stainless		10
23	Stud M8*20.A2-70 ISO7380 (half-round) stainless		4
24	Screw 4.8*25.C1 DIN7504P (countersunk with drill TX) stainless		14



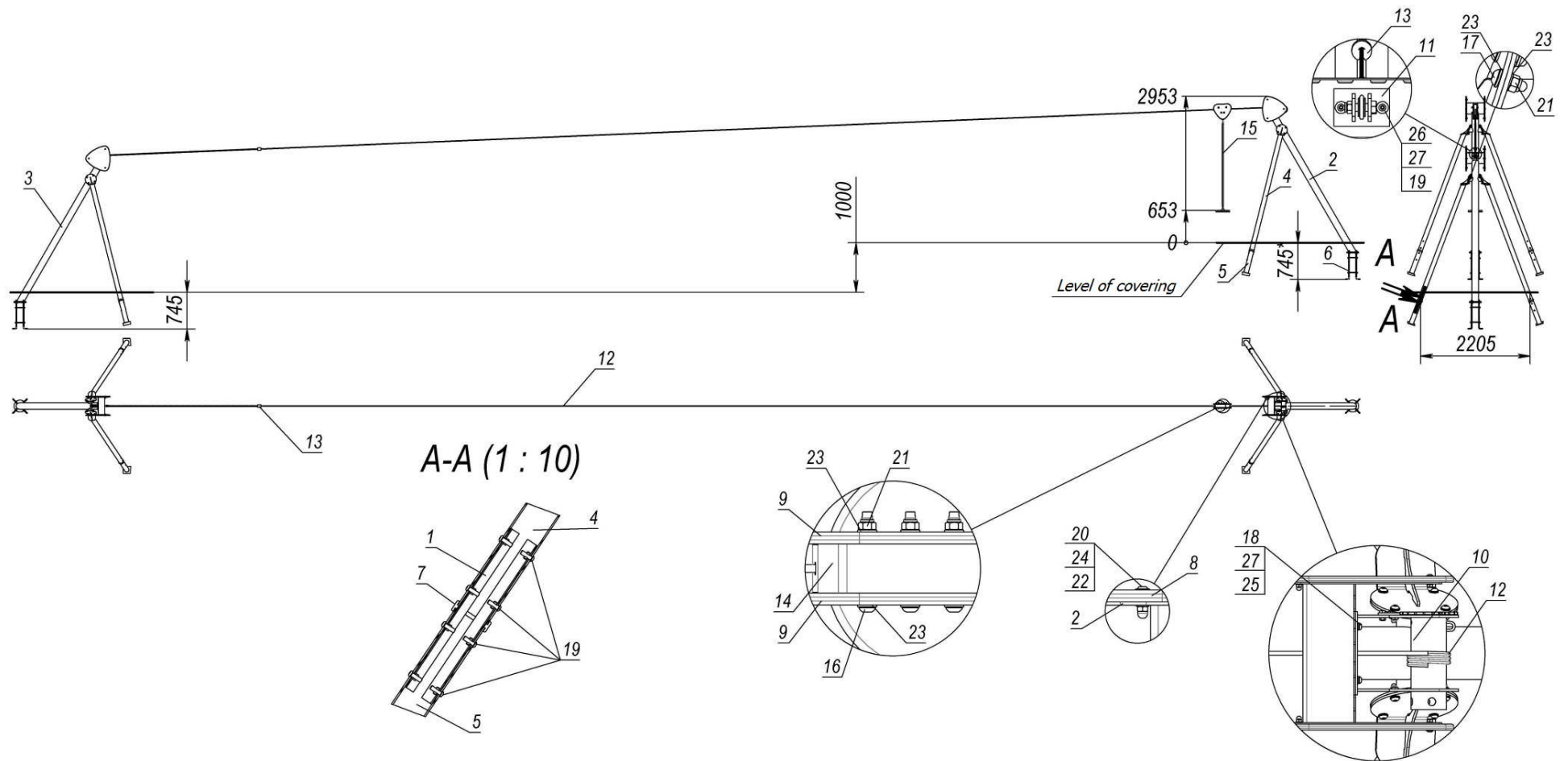
Picture 7 – Assembly scheme of frame



Picture 8 – Installation scheme of panel

Table №3 – Completeness:

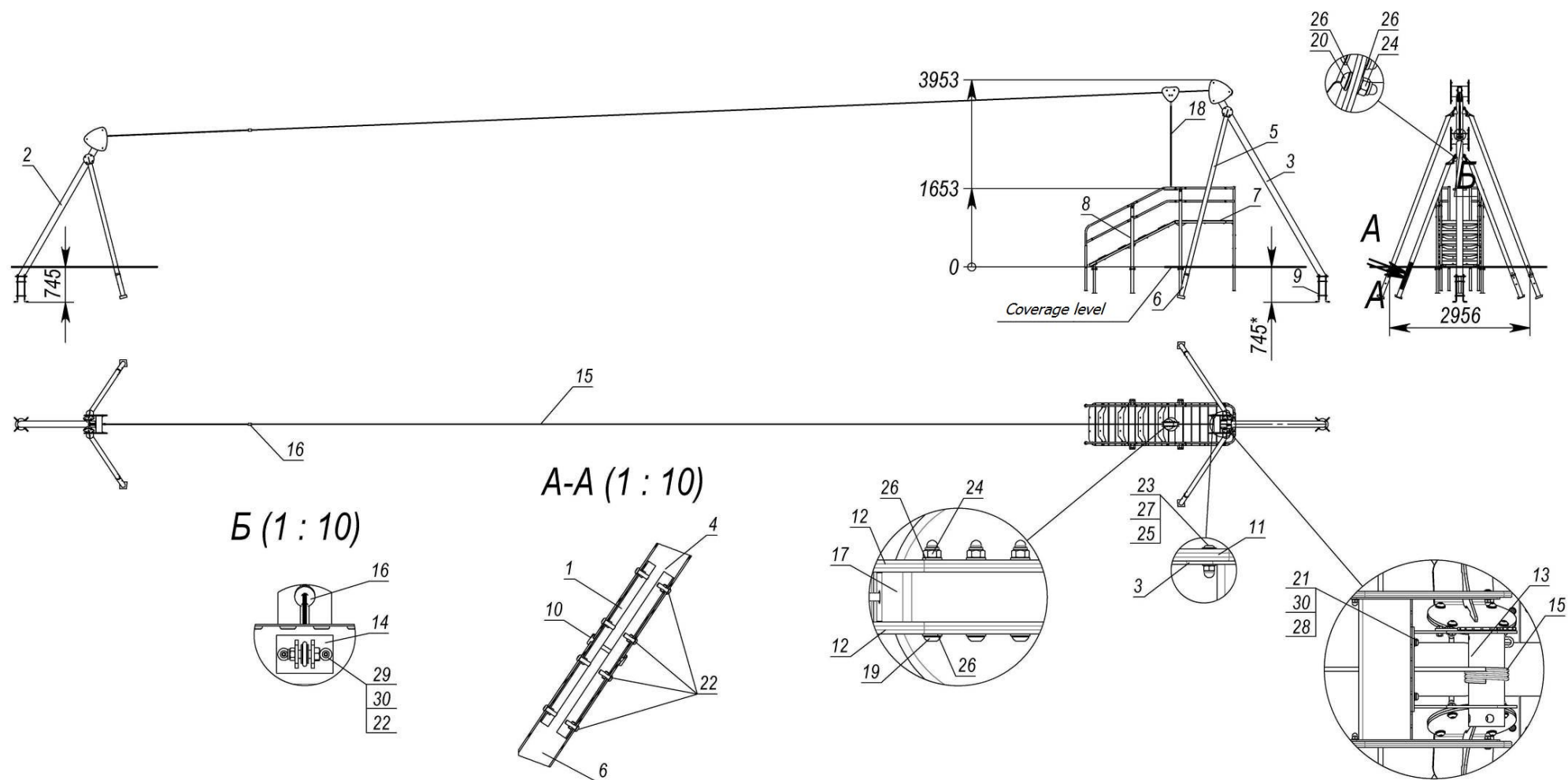
<i>Pos.</i>	<i>Name</i>	<i>Weight, kg</i>	<i>Q-ty</i>
1	Handrail embedded element	2	2
2	Stud M8*50.A2-70 DIN912 (cyl.) stainless		2
3	Washer 8-A2 DIN125 (flat)		22
4	Washer 10-A2 DIN125 (flat)		8
5	Washer 12-A2 DIN125 (flat)		16
6	Nut M8.A2-70 DIN1587 (cap nut) stainless		14
7	Nut M10.A2-70 DIN1587 (cap nut) stainless		4
8	Nut M12.A2-70 DIN1587 (cap nut) stainless		8
9	Connecting bushing D42mm		2
10	Ladder	14	1
11	Pallet	11	1
12	Railings support	10	2
13	Embedded element	3	2
14	Panel	18	1
15	Straight handrail	2	4
16	Panel		2
17	Plug DN32R		2
18	Connecting bushing		8
19	Stud M10*20.A2-70 ISO7380 (half-round) stainless		4
20	Stud M8*20.A2-70 ISO7380 (half-round) stainless		8
21	Bolt M12*30.A2-70, DIN933 (hexagonal full thread) stainless		8
22	Stud M8x60-A2 ISO7380-2 (press washer) stainless		8
23	Stud M8x50.A2-70 ISO7380-2 (press washer) stainless		4
24	Screw 4.8*25 DIN7504P (countersunk with drill)		8



Picture 9 – LK817

<i>Pos.</i>	<i>Name</i>	<i>Weight, kg</i>	<i>Q-ty</i>
1	Connector	1	8
2	Middle rack	63	1
3	Middle rack	63	1
4	Support	24	4
5	Embedded element	5	4
6	Embedded element	8	2
7	Spacer ring		4
8	Cover plate	3	4
9	Bogey cover plate	1	2
10	Cable tensioning device	6	1
11	Cable fastening	2	1
12	Cable with thimble		1
13	Brake spring		1
14	Bogey		1
15	Suspension with seat Monkey "Curve" KBT103.006.006.001 (Chain 2.5m)		1
16	Stud M12*120.A2-70 ISO7380 (half-round) stainless		4
17	Stud M12*30.A2-70 ISO7380 (half-round) stainless		16
18	Stud M10*25.A2-70 ISO7380 (half-round) stainless		2
19	Stud M10*30.A2-70 ISO7380 (half-round) stainless		34
20	Stud M8x30.A2-70 ISO7380-2 (press washer) stainless		12
21	Nut M12-A2 DIN986 (cap/lock)		20
22	Nut M8.A2-70 DIN1587 (cap nut) stainless		12
23	Washer 12-A2 DIN125 (flat)		40
24	Washer 8-A2 DIN125 (flat)		12
25	Washer 10-A2 DIN125 (flat)		2
26	Washer 10-A2 DIN9021 (enlarged) stainless		2
27	Washer 10-A2, DIN7980 (spring) stainless		4

Picture 10 – completeness of LK817



Picture 11 – LK817-P

<i>Pos.</i>	<i>Name</i>	<i>Weight, kg</i>	<i>Q-ty</i>
1	Connector	1	8
2	Middle rack	63	1
3	Middle rack	78	1
4	Support	24	2
5	Support	34	2
6	Embedded element	5	4
7	Site	82	1
8	Ascent	104	1
9	Embedded element	8	2
10	Spacer ring		4
11	Cover plate	3	4
12	Bogey cover plate	1	2
13	Cable tensioning device	6	1
14	Cable fastening	2	1
15	Cable assembly	16	1
16	Brake spring		1
17	Bogey	8	1
18	Suspension with seat Monkey	3	1
19	Stud M12*110.A2-70 ISO7380 (half-round) stainless		4
20	Stud M12*30.A2-70 ISO7380 (half-round) stainless		16
21	Stud M10*25.A2-70 ISO7380 (half-round) stainless		2
22	Stud M10*30.A2-70 ISO7380 (half-round) stainless		34
23	Stud M8x30.A2-70 ISO7380-2 (press washer) stainless		12
24	Nut M12-A2 DIN986 (cap/lock)		20
25	Nut M8.A2-70 DIN1587 (cap nut) stainless		12
26	Washer 12-A2 DIN125 (flat)		40
27	Washer 8-A2 DIN125 (flat)		12
28	Washer 10-A2 DIN125 (flat)		2
29	Washer 10-A2 DIN9021 (enlarged)		2
30	Washer 10-A2, DIN7980 (spring) stainless		4

Picture 12 – completeness for LK817-P